

When the Gulls Go North, and Time, of Light and Darkness, Forms an Arch Sublime

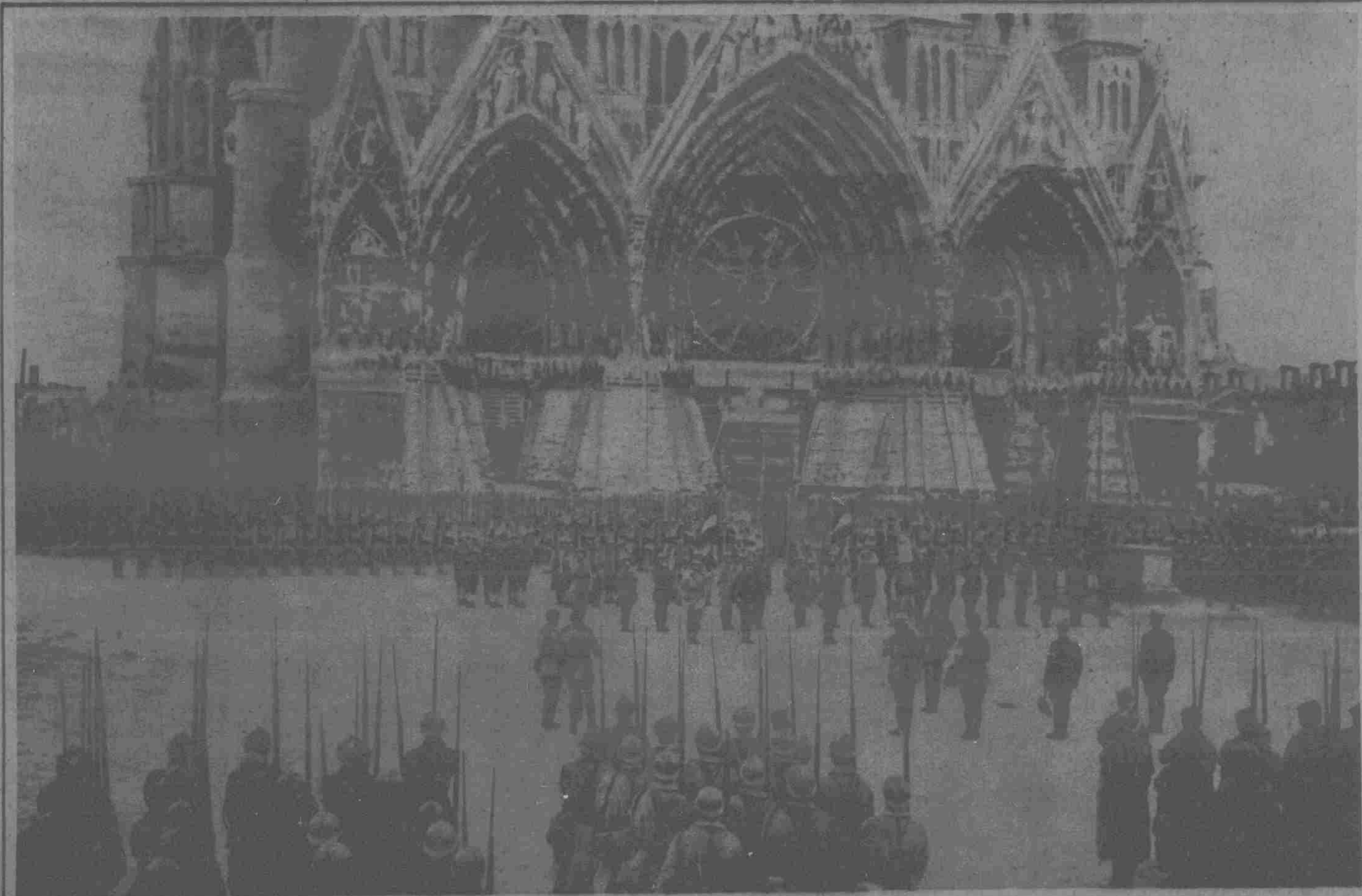
(Photograph Copyrighted by International Film Service.)



BOSTON HARBOR AND THE CUSTOM HOUSE TOWER SILHOUETTED AGAINST A SETTING NOVEMBER SUN, A MOST WORTHY EFFORT OF AN APPRECIATIVE PHOTOGRAPHER.

IN FRONT OF MIGHTY RHEIMS CATHEDRAL—A REAL PICTURE

(Photograph Copyrighted by Underwood & Underwood.)



WITH THE GREAT CATHEDRAL AS A BACKGROUND, GENERAL MAISTRO IS DISTRIBUTING DECORATIONS TO THE BRAVE FRENCHMEN WHO DISTINGUISHED THEMSELVES IN THE RECENT FIGHTING. IT WILL BE NOTICED THAT ALL THE STATUES IN FRONT OF THE CATHEDRAL HAVE BEEN SAND-BAGGED AS A PROTECTION AGAINST AIR RAIDS AND GUN FIRE.