

AUTOMOBILES.

SPECIAL SALE ON GUARANTEED TIRES... 20x2 1/2 Plain... 20x2 1/2 Rib...

Election Day Here

Ride to the polls in a new near used car... MONEY BACK IF NOT SATISFIED after 24 hours' trial.

TRAWNER AUTO CO.

BARAINS IN USED CARS... 1917 Ford Touring Car... 1918 Packard touring car...

USED CARS AND TRUCKS AT BARGAIN PRICES

STANDARD MOTOR CAR CO... 1917 Ford Touring Car...

GOOD USED CARS

GUY L. SMITH... 1917 Ford Touring Car...

WANTED-FOR SPOT CASH, 1000 USED CARS

Exchange Co. 2055 Farm St. D. 6035.

QUALITY USED CARS

VAN BRUNT AUTOBOMILE CO... 1406 LEAVENWORTH ST.

WE WANT THE USED CAR MEN

TRAWNER AUTO CO... 1910 Farm. Harney 414

FOR SALE-1918 model Ford, good as new

price \$1400. Call Walnut Station at the Omaha Bee.

DODGE TRUCKS, good condition

good tires; \$700. Dauntis, Tyler 350.

Auto Livery and Garages.

RENT A FORD-DRIVE IT YOURSELF... 10c per mile...

FORD LIVERY CO.

Douglas 5122. 1314 Howard St.

Service Stations.

AUTOMOBILE electrical repairs; service station for Rexford carbers...

Tires and Supplies.

Wrecked and leaky radiators repaired and rebuilt...

RADIATORS.

Wanted-Used Radiators... 1918 Cuming St.

GUARANTEED 3000 MILES

20x2 1/2... 20x2 1/2... 20x2 1/2...

WE PURCHASE USED TIRES

AGENTS WANTED... 1518 Leavenworth St.

NEW TIRES ON SALE

For tires on sale. Write for circular... 1314 Howard St.

KEAL bargains in slightly used tires

new at very low prices. G. and G. Tire Co.

USED TIRES FIRST-CLASS CONDITION

All sizes, \$5 to \$35, sent on approval... 1314 Howard St.

MOTORCYCLES AND BICYCLES.

HARLEY-DAVIDSON MOTORCYCLES... 17th and Leavenworth.

LIVE STOCK-VEHICLES.

FOR SALE-4 good work horses... 1314 Howard St.

PERSONAL.

THE SALVATION Army Industrial Home solicits your old clothing...

MEDICAL.

RUPTURE successfully treated without a surgical operation...

MONEY TO LOAN

Organized by the Business Men of Omaha... 432 Security Bldg.

LOANS ON DIAMONDS, JEWELRY AND

11% LIBERTY BONDS... 6TH FLR SECURITY BLDG

REAL ESTATE TRANSFERS.

Michael L. Clark, sheriff, to Bankers' Saving & Loan Assn.

Turpentine and Rosin.

Savannah, Ga. Nov. 4-Turpentine-Firm...

Evaporated Apples and Dried Fruit.

New York, Nov. 4-Evaporated apples, nominal...

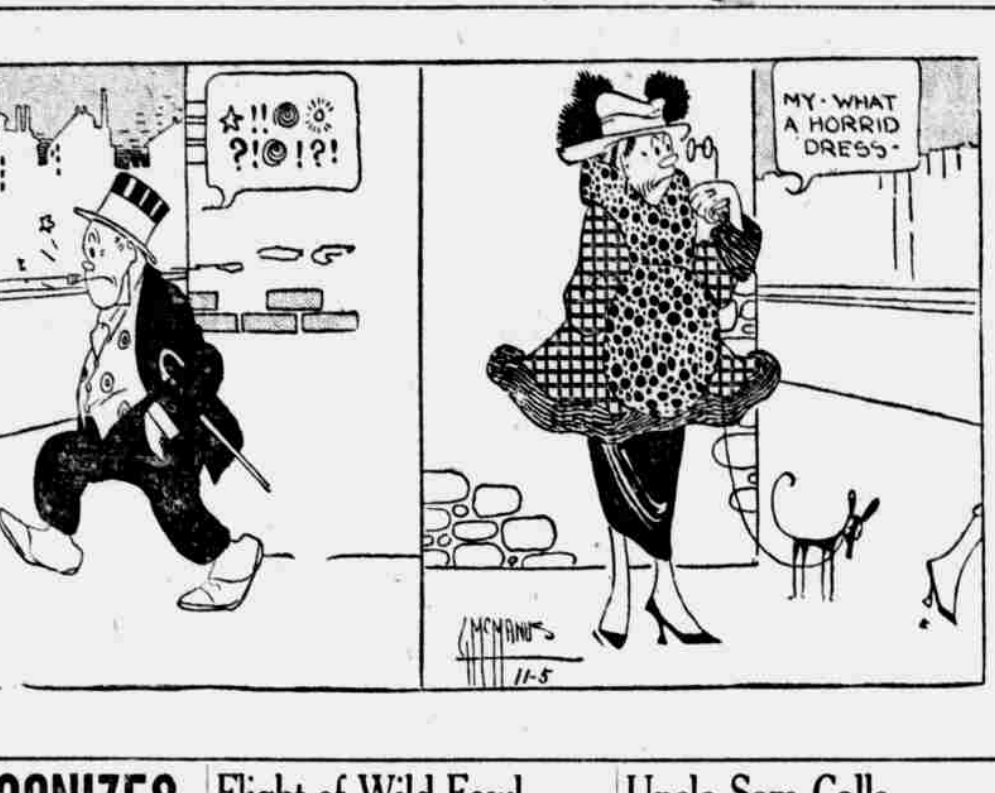
Dry Goods.

New York, Nov. 4-Cotton goods and yarns today were quiet...

BRINGING UP FATHER



Drawn for The Bee by George McManus



FOOT BALL STAR LEAVES SCHOOL TO DO WAR WORK

Pigskin Warriors at Central High Weakened by Drain, Still Are Snappy and Full of Pep.

Market and Industrial News of the Day

LIVE STOCK

Receipts were- Cattle, Hogs, Sheep... Omaha, Nov. 4, 1918.

GRAIN MARKET

Wheat receipts on the Omaha market were 117 carloads.

FINANCIAL

N. Y. STOCKS AND BONDS.

CHICAGO CLOSING PRICES.

Table with columns: Com, Open, High, Low, Close, Satdy. Includes items like Corn, Wheat, Soybeans.

OMAHA GRAIN PRICES.

Wheat receipts on the Omaha market were 117 carloads.

DISPOSITION-HEAD.

Morris & Co. Cattle, Hogs, Sheep... 1314 Howard St.

U. S. RECOGNIZES INDEPENDENCE OF POLISH ARMY

Accepted as Autonomous and Co-Belligerent; America's Message Is Sent by Secretary Lansing.

New York, Nov. 4-Peace stocks had their lining again today...

Flight of Wild Fowl

Now On Is Greatest in Number of Years

Reports to railroad offices show that the snow of last week started a heavy movement of ducks and geese...

Uncle Sam Calls

Three Stars From Nebraska Lineup

Lincoln, Nov. 4-Almost on the eve of the Nebraska-Missouri football game...

Department of Labor is to Extend Aid to Labor Clubs

Washington, Nov. 4-Establishment of uniform working conditions in all industries...

Morton F. Plant, Noted Yachtsman, Dies in N. Y.

New York, Nov. 4-Morton F. Plant, retired financier and yachtsman...

Soccer Players to Meet to Plan Game for Field Day

All local soccer players are urged to attend a meeting...

Give National Horse Show Receipts to War Work Fund

New York, Nov. 4-The gross receipts of the national horse show...

Monmouth Parks Win Two

The Monmouth Parks won the first game Sunday by forfeit from the Mohawks...

Where Can I Find Relief From Itching, Terrifying Eczema?

This Question is Ever on the Lips of the Afflicted.

Metals Market.

New York, Nov. 4-Lead-Unchanged; spot, \$3.95.

Liberty Bonds.

New York, Nov. 4-Liberty bond closing prices: 3 1/2, \$99.88...

Sport Calendar for Today.

Racing: Autumn meeting of Maryland Jockey Club...

Chicago Grain and Provisions.

Corn Market Takes Spurt; Oats Show Strength; Hogs Remain Firm.

Chicago, Nov. 4-Desire that trades be opened up for the election holiday...

Department of Labor is to Extend Aid to Labor Clubs

Washington, Nov. 4-Establishment of uniform working conditions in all industries...

JUST A WORD

To the Voters of Douglas County:

MARY G. KEENAN

Candidate for County Superintendent of Douglas County

Is the present County Superintendent.

Appointed by the County Commissioners to fill vacancy caused by resignation of her brother, Thomas J. Keenan...

Has had several years' experience in teaching rural and village schools.

Has no other duties that would attract attention from the duties of the office.

IS NOW and was qualified for the office at the time of the primaries.

Table of grain prices: Corn, Wheat, Soybeans, etc.

Table of metal prices: Lead, Tin, Copper, etc.

Table of grain prices: Corn, Wheat, Soybeans, etc.

Table of metal prices: Lead, Tin, Copper, etc.

Table of grain prices: Corn, Wheat, Soybeans, etc.

Table of metal prices: Lead, Tin, Copper, etc.

Table of grain prices: Corn, Wheat, Soybeans, etc.

Table of metal prices: Lead, Tin, Copper, etc.

Table of grain prices: Corn, Wheat, Soybeans, etc.

Table of metal prices: Lead, Tin, Copper, etc.

Table of grain prices: Corn, Wheat, Soybeans, etc.

Table of metal prices: Lead, Tin, Copper, etc.

Table of grain prices: Corn, Wheat, Soybeans, etc.

Table of metal prices: Lead, Tin, Copper, etc.

Table of grain prices: Corn, Wheat, Soybeans, etc.

Table of metal prices: Lead, Tin, Copper, etc.

Table of grain prices: Corn, Wheat, Soybeans, etc.

Table of metal prices: Lead, Tin, Copper, etc.

Table of grain prices: Corn, Wheat, Soybeans, etc.

Table of metal prices: Lead, Tin, Copper, etc.

Table of grain prices: Corn, Wheat, Soybeans, etc.

Table of metal prices: Lead, Tin, Copper, etc.

Table of grain prices: Corn, Wheat, Soybeans, etc.

Table of metal prices: Lead, Tin, Copper, etc.

Table of grain prices: Corn, Wheat, Soybeans, etc.

Table of metal prices: Lead, Tin, Copper, etc.

Table of grain prices: Corn, Wheat, Soybeans, etc.

Table of metal prices: Lead, Tin, Copper, etc.

SKINNER PACKING COMPANY POULTRY BUTTER EGGS

GEO. W. BERGE CANDIDATE FOR ATTORNEY GENERAL

Public Utility Bonds How to Judge Them

The National City Company