

REAL ESTATE IMPROVED.

Miscellaneous. 2-ROOM cottage, two blocks from car full lot \$2,000. Terms, \$200 cash balance \$20 per month. BENSON & CARMICHAEL, Real Estate and Insurance, 1220 1/2 St. Phone 1000.

FOR RENT AND SALE. HOUSES, COTTAGES AND APARTMENTS. PORTER & SHOWELL, 302 S. 17th St. Douglas 5611.

REAL ESTATE—Business Property. WE WILL buy your home or business property and pay cash. L. A. WOLFE CO., 1515 Broadway, Douglas 1111.

REAL ESTATE—TO EXCHANGE. A DANDY 2-acre and 7-room modern house, close to car and paved road; will take \$2,500 cash house as part payment. Call Mr. Brown, INTER-STATE REALTY CO., 913-14 City National, Tyler 1672.

REAL ESTATE—UNIMPROVED. South. FOR SALE—2 lots, just south of Elmwood Park in Overlook addition. Owner leaving City. Will sell cheap for cash. Address Box Y 1188, Omaha, Neb.

REAL ESTATE—SUBURBAN. Benson. 160 ACRES, one mile south of Bennington, Neb. Improve or sell. A. Banting, 418 Cass St., Omaha, Neb.

REAL ESTATE—OTHER CITIES. FOR SALE OR RENT—Modern garage, fully equipped at Ogallala, Neb., on Lincoln Highway; Dodge agency; stock investment about \$1,000; country seat in fine farming community; owner gone and war. Address E. M. Scarle, Jr., 12th and Farnam Sts., Omaha, Neb.

REAL ESTATE—WANTED. 5 OR 6-ROOM houses or bungalows in good location wanted at once. I have several buyers wanting good homes. F. D. Weed, 210 South 18th St., Tyler 151.

FINANCIAL. Real Estate, Loans and Mortgages. SIX PER CENT FIRST MORTGAGES. Secured by Omaha residences are safe investments. Let us show you the security in the following loans:

W. H. THOMAS & SON, Keeline Bldg. Money on hand for mortgage loans. CITY NATIONAL BANK BLDG. OMAHA HOMES—EAST NEB. FARM. O'KEEFE REAL ESTATE CO., 1616 Omaha Nat. Bank Bldg., Doug. 3718.

FARM AND RANCH LANDS. Arkansas Lands. AUGUST 20TH. Our next excursion to McGehee, Ark. W. S. FRANK 291 NEVILLE BLK. Maryland Lands. Maryland water front farm. Mild climate. C. K. RUSSELL Realty Co., Baltimore, Md.

FARM AND RANCH LANDS.

Oregon Lands. OREGON LANDS. In the heart of the Range. The John Valley Project. Malheur County, Oregon. An empire in the making, land \$1.00 per acre at the coast of the war. You can file on grazing homestead entries nearby. Literature and particulars on request. Next excursion August 22nd. F. J. TEBBENS, HARLEY & HOOKER, 840 First Nat. Bldg., Omaha, Neb.

SMALL FARMS. I have several 10 to 40-acre TRACTS. Improved; 10 acres, well improved, macadam road, adjoining city; 20 acres, macadam road, fair improvements, excellent location; 30 acres, well improved, 1/2 mile to city limits, good terms; 20 acres, improved, ideal laying, good location, 10 acres, several lots out, small improvements; 40 acres, fifty well improved, 2 miles out, excellent location; 50 acres, 2 miles out, but near small town, well improved, alfalfa. Range in price from \$100 an acre to \$200. These are all producers. BE A PRODUCER. Not just a consumer. Uncle Sam some of your money, or fight.

ORIN S. MERRILL COMPANY. 1615-1616 CITY NATIONAL BLDG. COIN AND METAL EXCHANGE. PLEDGED TO SELL. 160 acres, 4 miles from town, on the main line of Union Pacific Railroad, level road to town, 40 rods to school, 1 1/2 miles to a small station. Land lies level, but is well drained, good black soil, very productive; the corn on this farm will prove this fact; 35 acres in pasture with small stream of running water; 10 acres of meadow, balance under plow, brand new 4-room house, well sheltered by plenty of shade trees, good stables for six horses and a few other outbuildings, two wells with the very best of pure soft water at a depth of 20 feet. Price \$120 per acre, on good terms. Don't let a small job at home prevent you from inspecting this farm at once. M. A. Larson, Central City, Neb.

FARMS AND RANCHES. We have several very attractive properties for sale in Dawes, Keya Paha and Brown counties. These are places that we have personally inspected, and as recommended as being good buys. Send for list and photos stating as to your wants. Klocke Inv. Co., Omaha.

MERRICK COUNTY improved corn and alfalfa farms at the right price. M. A. LARSON, Central City, Neb. 150 ACRES improved, close in, paved road. Nison, 422 Securities Bldg.

South Dakota Lands. I AM quitting the ranch business and offer for sale or will trade for land or income property ninety head of horses, Belgian and Percheron, from yearlings to nine-year-olds. Dickey Moran Lake Andes, S. D.

FOR SALE—160 acres, Brown Co., South Dakota. 21 and 22 sections. Aberdeen, 5 1/2 miles to railroad; 22 acres wheat, rest of land unbroken; wheat, 20 bu. per acre. Price, \$40 per acre. If you mean business, write me today. From your waste, my time or yours. Address E. A. Collins, St. Joseph, Mo., care postoffice.

FOR sale of trade—650 acres farm and ranch close in, paved road at \$20 per acre. Fall River, S. D. Walnut 1465.

Miscellaneous. FOUR-ROOM house and six lots. Price \$1,800. Terms, a small payment down and \$25 per month. Located just outside the city limits, close to car, school, church and store; good soil, suitable for gardening. A good place to keep chickens, pigs and cow. If you want to see this house take any car that runs on 24th street and transfer to West Q car. Get off at the end of the car line at 42d and Q streets. A salesman will be at the end of the car line at 42d and Q streets Saturday afternoon, August 17, and all day Sunday, August 18, to take you to see this house and other houses we have for sale in this vicinity on easy terms. H. H. HARPER AND COMPANY.

FARM LAND WANTED. FARMS WANTED. Don't list your farm with us if you want to keep it. E. P. SNOWDEN & SON, 810 Electr. Bldg., Douglas 2271.

POULTRY AND PET STOCK. BARLEY, \$3.50 per cwt., delivered. Wagner, 801 N. 16th. Phone Douglas 1142.

Horses—Live Stock—Vehicles. GOOD, gentle, 1200-lb. Hambletonian horse, city broke. Phone Walnut 329.

MONEY TO LOAN. Organized by the Business Men of Omaha FURNITURE, pianos and notes as security \$400, \$500, \$1,000, total \$2,000. Emsler, larger amt's. proportionate rates. PROVIDENT LOAN SOCIETY, 422 Securities Bldg., 11th & Farnam, TY. 688

OMAHA GENERAL MARKET. Fish—Catfish, good sizes, large, 25c lb.; halibut, 25c lb.; black cod, large sizes, 15c lb.; trout, size to suit, 25c lb.; Royal White Chinook salmon, 20c lb.; whitefish, 15c lb.; yellow perch, 20c lb.; pickered, 15c lb.; Red Chinook salmon, 25c lb.; blood-red bullheads, large, 25c lb.; medium, 15c lb.; rock bass, 15c lb.; yellow perch, 20c lb.; white perch, 15c lb.; herring, 15c lb.; haddock, 15c lb.; steak cod, eastern, 15c lb.; crabs, \$2.00/22 lbs.; buffalo, large, 14c lb.; white perch, 15c lb.; carp, large, 12c lb.; steak cod, western, 15c lb.; guilf red snapper, 15c lb.; frozen black bass, medium and large, 15c lb.; frozen large bass, 20c lb.; frozen skinned whitefish, odd sizes, 20c lb.; Almon boneless, 18-lb. baskets, per basket, \$2.50; round, 10 lb.; frozen round pink salmon, 14c lb.; frozen red salmon, 22c lb.; frozen pink salmon, 20c lb.; frozen sturgeon, 15c lb.; frozen Spanish mackerel, 17c lb.; frozen native fall mackerel, 21c lb.; frozen round western red snapper, 10c lb.; frozen silver smelt, 12c lb.; frozen No. 1 white mullets, 15c lb.; frozen Canadian Fallible whitefish, average 1/2 lb., 10c lb.; frozen Canadian whitefish, large, dressed or round, 10c lb.; frozen Canadian dressed pickered, 10c lb.; frozen Canadian round pickered, 10c lb.; frozen dressed herring, large, 9c lb.; round, 5c lb.; baracuda, 14c lb.; sea rock bass, 14c lb.; sea bream, 24c lb.

"Dreamland Adventures"

By DADDY. THE LAW OF BIRDLAND. A complete, new adventure each week, beginning Monday and ending Saturday.

CHAPTER I. Peggy Takes a Slide. PEGGY was on a picnic in the woods—a picnic at which she was the only child. She had looked forward eagerly to the outing, hoping for a jolly playtime with the birds. But, like old Mother Hubbard, who went to the cupboard, she suffered a disappointment.

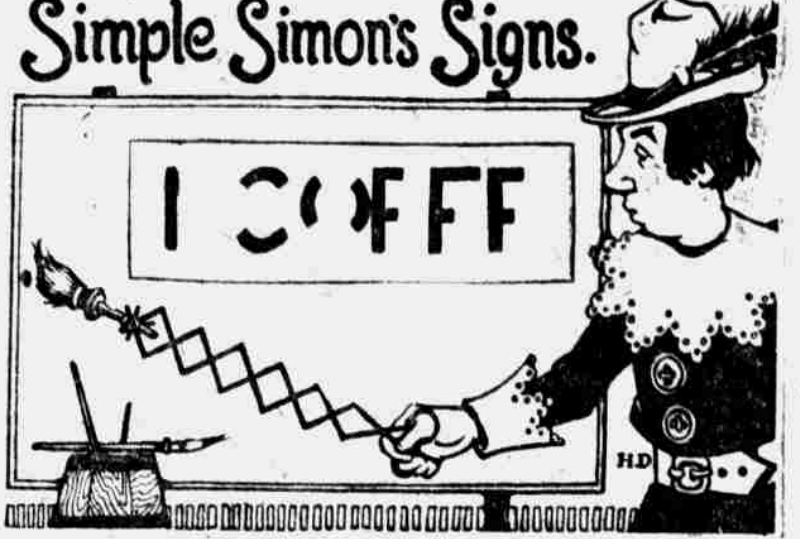


JUDGE OWL WAS NOW ABLE TO LEAD THE WAY AT A LIVELY PACE.

birds were in there—scared away by the chatter of the picnic party. Her eyes, coming back to her mother, asked a question. Mother hadn't been grown up so very long and she knew what Peggy meant. She smiled and nodded. Peggy blew her a grateful kiss and slipped happily away. It was very dark in the forest and mysteriously silent. Always before when Peggy had been in the woods she had been cheered by the merry twittering and singing of the birds. Now there wasn't even a chirp—just an occasional drowsy hum as a honey-laden bee buzzed homeward, or a scurry in the leaves as a squirrel darted nervously out of sight.

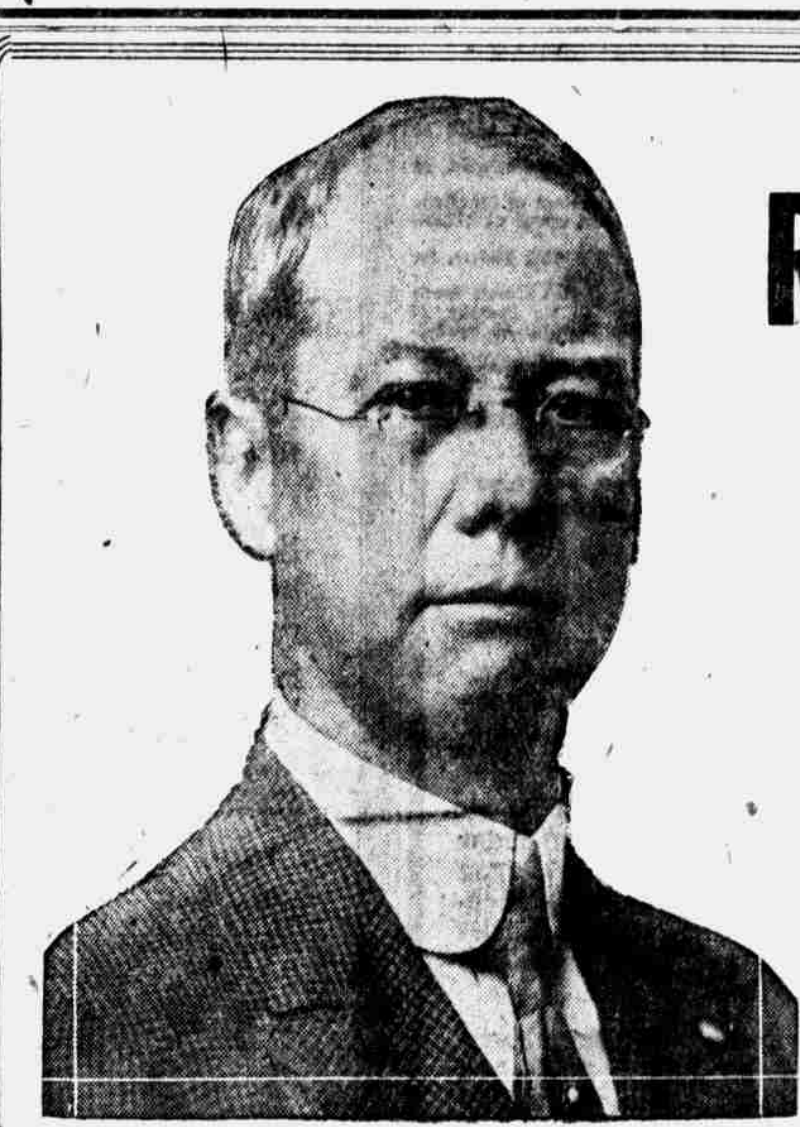
Where could the birds be? had they gone on an excursion, or had some new foe appeared to drive them from the forest? "O my birds!" cried Peggy. "Where are you?" There was no answer. She tried again, putting her hands to her mouth so the sound would carry farther. "Where are you?" "Who! Who!" came back an echo-like answer from far away.

came wide-awake. "What day is this?" "It's Monday," answered Peggy. "Thunderation!" hooted Judge Owl. "There, I've gone and slept through most of the party." "What party?" asked Peggy. "The birds' harvest party, of course," replied Judge Owl. "Why aren't you there?" "Because I wasn't invited," replied Peggy, feeling a trifle hurt. "Oh, but I sent Brownie Owl early last evening to invite you. Something must have happened to him. But, come on, we'll have a lot of fun yet if I can find my way through this blinding sunlight." Judge Owl started blundering along, but Peggy stopped him. "I've brought you a present," she cried. "What do you think it is? A pair of goggles so that you can see in the day as well as in the night?" "My gracious, I never heard of a bird wearing goggles," said Judge Owl. Peggy had found the pair of toy automobile goggles among her playthings, and had figured they were just right for him. She slipped them upon his beak and found them a perfect fit. "Say, this is fine," hooted the judge. "I can see as though it were pitch dark. I surely do thank you, Princess Peggy." Judge Owl was now able to lead the way at a lively pace. Soon they came out on the top of a high clay cliff overlooking the river. From below they came a cry. "Help! Help!" "It's Brownie Owl," hooted the judge. "I was afraid he was in trouble." Peggy leaned over the edge of the cliff, but could see nothing. Judge Owl fluttered down for a closer look. "Brownie Owl is walled up in a hole," he called back to Peggy. "Come down and help him!" The cliff was very steep. At the bottom was the swift flowing river. A slip would send her into it. Peggy hesitated, but only for a moment. Brownie Owl had met harm while on his way to her. She would save him. She crept along a narrow ledge and soon came to a hole from which Brownie Owl's head was sticking. As for his body, it was packed in tight with clay and he couldn't stir a bit. Peggy dug away the hard clay and lifted him out. He was just like a lump of dirt, only his head and feet showing. As Peggy started to climb back up the cliff the earth gave way beneath her feet. Down she slid into the water. It was shallow, but the bottom was of soft clay, which seemed to suck her down and drag her toward the rapid current. Holding Brownie Owl in one hand, she tried to wade, only to find her feet held fast in the shifting ooze. In a moment she would sink into the river and then—



Complete the letters of Simon's sign—they will spell the name of a ball player. Answer to previous puzzle—THOMAS

M. A. CARRIKER, M. D.; M. D. S.; F. S. D.; F. A. I. P. Physician and Scientist. Candidate for Non-Partisan Nomination for REGENT THE STATE UNIVERSITY. EDUCATION—Hillsboro Academy, Carthage College, McEndrie College, Ill.; Col. Phys. Surgs., Ill.; Homeopathic and Eclectic Colleges, Cincinnati, O.; Phreno-Psychology, Mental Scientist, Food Scientist, New York, N. Y. MALACHI A. CARRIKER Stands for State Development—Encouragement to Educational, Industrial and Christian Institutions, Better Child Conditions, National Prohibition, Equal Suffrage, University Loyalty. We honor you. We shall prize your vote. We pledge FAITHFULNESS and EFFICIENCY. Primaries August 20.



TO REPUBLICAN VOTERS:

The supreme duty of republican voters of the State of Nebraska, is to secure the nomination of ROSS HAMMOND, as a candidate for United States Senator.

We urge his name upon you because, knowing him well, we believe that he possesses the qualities of sound Americanism, clear judgment in a great crisis, and courage and fidelity to his convictions—qualities greatly needed in the men who are to represent Nebraska in the United States Senate during the fateful days which will follow until the war is prosecuted to a successful conclusion.

Because Ross Hammond was right in the great questions of war and peace following President Wilson's war message of April 2nd, 1917, we have a right to assume that he will be equally sound in the questions to come.

We cannot claim that we are electing a republican senator to support the war, if we put in men who opposed the critical war measures in April and May, 1917.

We cannot hope to elect a republican senator from Nebraska, unless we nominate a man with the record of Ross Hammond on the big issues of the day.

We therefore urge you to vote for him at the primaries.

- Francis A. Brogan, Robert S. Weller, Charles A. Goss, Wilbur L. Burgess, Matthew A. Hall, Harry O. Steel, George H. Thummel, Howard M. Goulding, J. A. Linderholm, Robert Smith, J. W. Holmquist, Dr. A. B. Somers, Erastus A. Benson, Geo. H. Payne, T. M. Penney, Henry E. Maxwell, C. C. Crowell, jr., C. M. Wilhelm, W. E. Rhoades, A. L. Reed, J. F. Twamley, Howard Kennedy, Alvin F. Johnson, W. J. Monaghan, J. E. George, J. B. Rahm, George H. Miller, W. J. Cully, John C. Wharton, Daniel L. Johnston, M. T. Martin, Raymond M. Crossman.

way at a lively pace. Soon they came out on the top of a high clay cliff overlooking the river. From below they came a cry. "Help! Help!" "It's Brownie Owl," hooted the judge. "I was afraid he was in trouble." Peggy leaned over the edge of the cliff, but could see nothing. Judge Owl fluttered down for a closer look. "Brownie Owl is walled up in a hole," he called back to Peggy. "Come down and help him!" The cliff was very steep. At the bottom was the swift flowing river. A slip would send her into it. Peggy hesitated, but only for a moment. Brownie Owl had met harm while on his way to her. She would save him. She crept along a narrow ledge and soon came to a hole from which Brownie Owl's head was sticking. As for his body, it was packed in tight with clay and he couldn't stir a bit. Peggy dug away the hard clay and lifted him out. He was just like a lump of dirt, only his head and feet showing. As Peggy started to climb back up the cliff the earth gave way beneath her feet. Down she slid into the water. It was shallow, but the bottom was of soft clay, which seemed to suck her down and drag her toward the rapid current. Holding Brownie Owl in one hand, she tried to wade, only to find her feet held fast in the shifting ooze. In a moment she would sink into the river and then—

VOTE FOR at the Primaries for C. G. CARLBERG Republican Member Omaha Water Board.

ALBERT W. JEFFERIS FOR CONGRESS REPUBLICAN PRIMARY, AUG. 20

"Stand still I'll save you!" Across the river was Billy Belgium. As he shouted he plunged into the stream and swam toward her. (Tomorrow it will be told how Peggy rescued and how she gets a surprise.)

WM. JENSEN Candidate For Republican Nomination For County Commissioner 5TH DISTRICT Tax Payer and Business Man 38 Years in the District. He brought about one cent per mile railroad fare for soldiers and sailors.



John M. Hofeldt Born in Nebraska. CANDIDATE FOR Sheriff of Douglas County Subject to the will of the Democratic voters in the August primaries. Your Support is Solicited. My Pledge, Honest, Efficient Public Service. All profits accruing from the feeding and care of prisoners will be given to the Red Cross, Y. M. C. A. and K. C. for the furtherance of War Work.

Ross Hammond Republican Candidate for UNITED STATES SENATOR PRIMARIES, TUESDAY, AUGUST 20TH

TO REPUBLICAN VOTERS: The supreme duty of republican voters of the State of Nebraska, is to secure the nomination of ROSS HAMMOND, as a candidate for United States Senator. We urge his name upon you because, knowing him well, we believe that he possesses the qualities of sound Americanism, clear judgment in a great crisis, and courage and fidelity to his convictions—qualities greatly needed in the men who are to represent Nebraska in the United States Senate during the fateful days which will follow until the war is prosecuted to a successful conclusion. Because Ross Hammond was right in the great questions of war and peace following President Wilson's war message of April 2nd, 1917, we have a right to assume that he will be equally sound in the questions to come. We cannot claim that we are electing a republican senator to support the war, if we put in men who opposed the critical war measures in April and May, 1917. We cannot hope to elect a republican senator from Nebraska, unless we nominate a man with the record of Ross Hammond on the big issues of the day. We therefore urge you to vote for him at the primaries.

SKINNER PACKING COMPANY POULTRY BUTTER EGGS 1116-1118 -- Douglas St. Tel-Douglas 1521