

THE OMAHA OIL & REFINING CO.

Incorporated Under the Laws of Nebraska

A HOME COMPANY OWNED AND OPERATED BY HOME PEOPLE

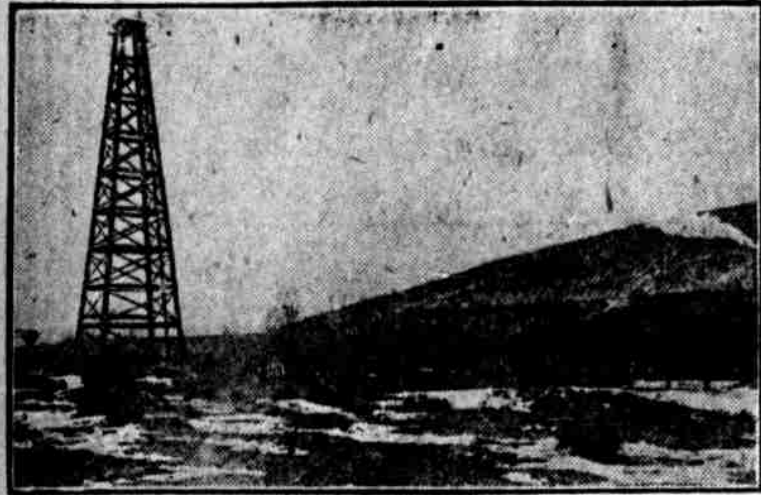
**A Going Concern Now Marketing Its Products
A Worthy Enterprise Inviting Your Confidence**

CAPITALIZATION \$500,000, Divided in 50,000 Shares at \$10 Par, Fully Paid, Non-Assessable

General Offices: Rooms 823-824 First National Bank Building, Omaha, Nebraska

Cable Address "Oma"

Telephone Tyler 430



Derrick on Section 19, Lander Field, Wyoming

We show you here a photograph of 74-foot Standard Derrick now ready to spud in. This well adjoins Wind River Refining, Western Exploration, Producers and Refiners, and other permanent producing companies.

It is close to railroad, river and quarter of a mile from large refinery. Prof. Beeler report is confident of production here.

OFFICERS:	DIRECTORS:
PRESIDENT—DAVID HEATON.	E. A. Conaway, Attorney-at-Law.
VICE PRESIDENT—J. E. MARR.	J. E. Marr, Secretary and Treasurer Selma Realty Co
TREASURER—JOHN A. OLSON.	John A. Olson, Secretary and Treasurer American Oil Products Co.
SECRETARY—E. A. CONAWAY.	David Heaton, Wyoming Oil Operator.
GENERAL MANAGER—DAVID HEATON.	C. Franklin Pollock, Wholesale and Retail Oils.
	Christian Jensen, Omaha Wrecking Co.

We have taken over the Heaton Oil and Refining Company, and now control 20,000 acres of valuable oil lands with FIVE PRODUCING wells and operations on five others started.

Our directors have authorized the sale of 10,000 shares of our treasury stock at the organization price of \$10.00 per share for the purpose of drilling additional wells on our proven oil lands. This is an investment, not a speculation.

OUR PROPERTIES

20,000 ACRES, 5 PRODUCING WELLS

LEASE on 10,400 acres deeded land in one block six miles long by nearly three miles wide (TITLE PERFECT—only 10% royalty), on the Famous Pat Crowley Ranch, situated in Archuleta county, Colorado, and New Mexico, in the oil fields of the SUNNY SAN JUAN.

THIS property has been reported upon by Prof. John W. McGee, well-known geologist; Prof. Arthur Lake, celebrated geological authority, known throughout the world; also Prof. John D. Caldron of Pennsylvania fields, as well as many others, all of whom are confident we will get oil here.

THE most remarkable feature of this property is that there is a live OIL spring running permanently of one to three barrels per day of high grade oil of paraffin base—from which the Indians and Cow Men have gotten their Oil needs since entering the country.

THIS U. S. government reports call especial attention to this spring, which positively proves the presence of OIL and its quality. The Selwig Oil Co. have the past week brought in the first commercial well, which has caused the greatest excitement and influx of Oil operators in this NEW FIELD. We are in with both feet and already have rig on the ground. **THINK WHAT ONE WELL BROUGHT IN HERE MEANS WITH OUR LARGE ACREAGE.**

WE control lease upon 160 acres on the north-east quarter of Section 30, Township 40, Range 79. This property is located in the famous Salt Creek field near Casper, Wyo., and is adjacent to such well-known producers as the Ohio Oil company, the Wyo.-Kan., who recently brought in a 1,400-barrel gusher, the Monarch-Salt Creek, and other well-known producing companies.

THIS field is one of the largest in production in the United States and Prof. C. A. Fisher, director and geologist of the Mid-West Oil company, spent three days examining this ground, and his report states in his opinion we will get good production here.

WE control by lease 480 acres in Section 2, Township 39, Range 80, west, in this same field, which is accounted very promising.

WE are erecting a standard rig and will start drilling as quickly as possible here.

WE have lease upon 40 acres in Section 19, also 320 acres in Section 10, and 320 acres in Section 11, all in Township 1, Range 1, in the Lander field, Wyoming, within a few feet of the river and railroad, and about a quarter of a mile from the refinery.

THIS property adjoins such well-known producers as the Wind River Petroleum company, the Western Exploration Oil company, the Producers and Refiners Oil company, and several other producing companies, and we have erected a 74-foot standard rig which is now ready to commence work.

IN addition to our proximity to these producers, Prof. Henry C. Beeler examined the property and located the well, where, in his report, he has the utmost confidence production will be brought in here.

WE control by validation, 800 acres in the Big Hollow Dome, near Laramie, Wyo., close to the new producing wells of the Wyoming Apex-Oil company, who are now building their refinery, and our property is equally as good as theirs. This property was reported, upon by Engineer L. L. Gibbs, who has made a special study of the Big Hollow structure, and is accepted authority. We shall place a rig at work here as quickly as possible, as the oil showing is so apparent that in doing the validation work the oil ran from the drill bit in every hole. We pay no royalty on this property.

WE control by validation 1,440 acres in the Toltec Dome, about 75 miles from Laramie, Wyo. We had excellent reports on this field and two other companies are now drilling here, which will prove our land as well as theirs. No royalties.

WE control by lease 480 acres in the Bonanza Oil Dome, near Worland, Wyo. Several rigs are drilling in this field, but no production has yet been brought in, however, the reports are very promising.

WE control by State of Wyoming lease 640 acres in the Cole Creek Oil Dome, near Casper, Wyo., where several of the largest companies of the eastern oil fields are now drilling, who will demonstrate the value of our holdings here without expense to us.

WE control by lease one tract of 640 acres in Sections 8 and 9, Township 1, south, Range 1, east, in the Plunket Oil Dome, on which we have Star drilling now erected and at work. We also have 840 acres in Sections 23, 24 and 25, in the same Plunket Dome adjoining the seven producing wells of the New York-Wyoming Oil company, who are now producing and shipping the highest grade and priced oil said to be found anywhere. Prof. Henry C. Beeler and Engineer D. C. Brown both examined this property and have given the most optimistic report assuring of production there.

WE control by Indian lease 1,000 acres on the Thompson and McGown Domes, upon which Prof. Beeler gives a good report. These domes are a continuation of the Plunket Dome.

WE control by Indian lease 960 acres in the well known Pilot Butte field, near Lander, Wyo. In this field the Mid-West, the Glenrock Oil company, the Kinney Oil company and many other producing companies have brought in new wells, and the Illinois Pipe Line company are now building their lines into this field from Riverton, thus assuring a market for the product.

WELLS are being sunk on adjoining sections to us, and we have planned to install drilling rig here at once.

WE control by state of Wyoming lease 640 acres in the newly discovered Kirby Dome, near Thermopolis, where commercial production has recently been brought in. We want to install rig here as soon as possible, as this is positive proven oil bearing.

WE control by Indian lease 640 acres in the Kip-near Oil Dome, also new discovery, near Pilot Butte, where drilling is being prosecuted by other companies, who will prospect this land without expense to us.

IN the famous Big Muddy field we control by state of Wyoming lease, School Section 16, Township 34, Range 75. This is the second largest producing field in Wyoming, whose output you must be familiar with.

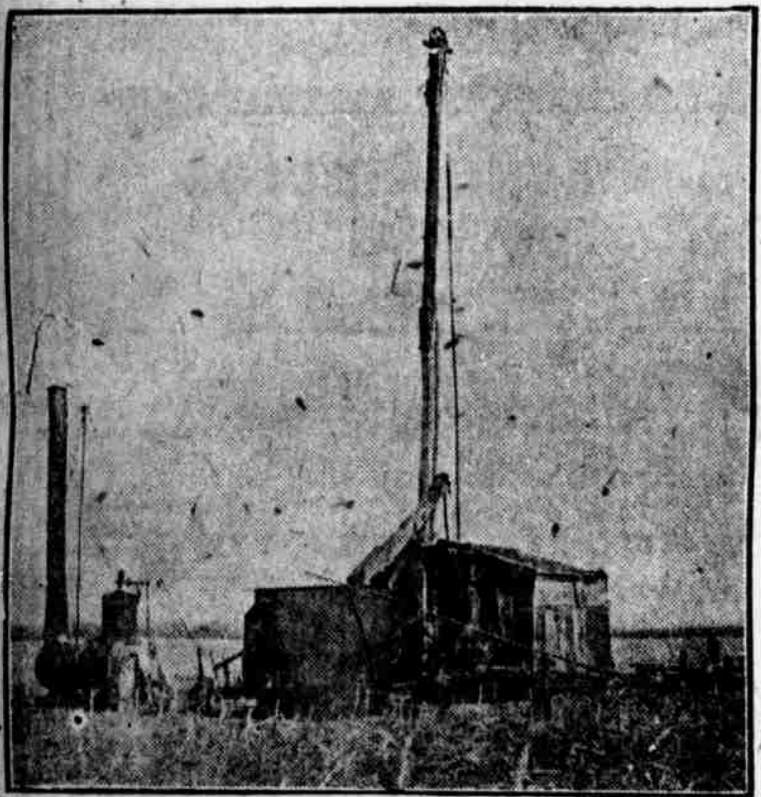
IN the old established Wayside field, Montgomery county, Kansas, we control by lease 80 acres upon which we have brought in five producing wells and have room for fifteen more. This property is fully equipped with pumping plant and other machinery, and is connected with pipeline to the refinery.

IN the Buck field, same county, we control by lease 160 acres with the first well down 100 feet, with positive assurance of production, as both of these tracts are surrounded by producing wells, and when drilled to their capacity, will assure us of substantial dividends.



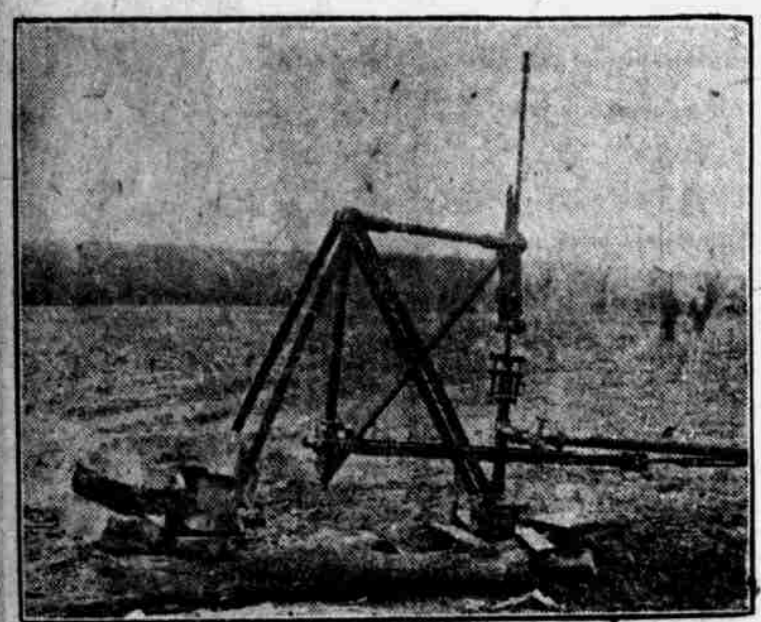
The Plunket Field, Wyoming

We have rig upon Section 9 ready to spud in Plunket field. This field is known for its high grade quality of oil, for which we are offered \$3.00 per barrel, also shallow drilling, 800 to 1,000 feet deep.



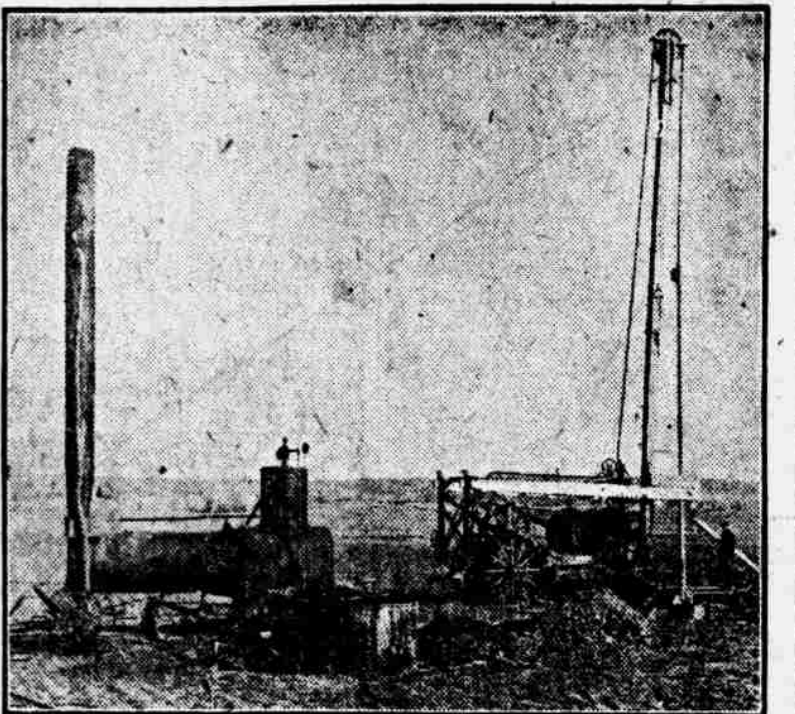
Drilling on Wayside Lease, Kansas

This shows "Star" rig drilling on 80-acre Wayside lease in Montgomery county, Kansas. Over 1,000 wells in this field. We have already completed five wells on this lease and have nine actual offsets with locations for six more. This will make twenty in all.



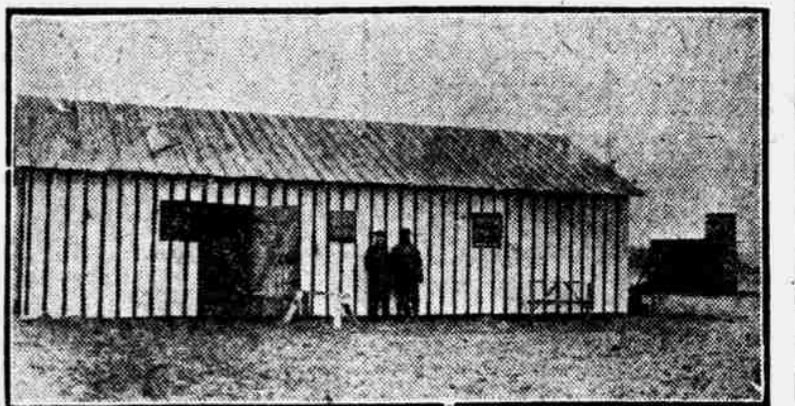
Omaha Pumping Oil

This is a picture of one well pumping in the Wayside field, Montgomery county, Kansas, and we have room for twenty wells here and expect to have them drilled by January 1, as we can complete a well every two weeks, the depth being but 850 feet, and cost \$2,000 per well.



Omaha Drilling on Buck Tract, Kansas

This picture shows "Keystone" rig on the 160-acre Buck tract in Montgomery County, Kansas, about four and one-half miles from Independence. Now drilling first well on the tract on a location actually offsetting two producing wells 400 feet to the east and one well 400 feet to the north. We have thirty locations here, with pipeline connections to the refinery and a \$2.25 price per barrel.



Power Plant on Wayside Lease

We show here power plant on the Wayside tract in Kansas. This is fully equipped to pump several wells at a time and in the background you can see the storage tanks. We now have five wells on this power and room for twenty wells on this tract.

Cut This Coupon Out and Mail It.

THE OMAHA OIL AND REFINING COMPANY,
823-24 First National Bank Bldg., Omaha, Neb.

Gentlemen—

Enclosed herewith you will find..... dollars, for which please send me a properly executed certificate for..... shares of the Fully Paid and non-assessable treasury stock of The Omaha Oil and Refining Company at ten dollars per share, and oblige.

Name

Address

Issue Certificate to

Buy NOW at organization price and profit as the additional wells are drilled. Price today

\$10.00 Per Share

WE WILL BUILD OUR OWN REFINERY