

LAUNCHING OF "QUISTCONCK" NOTABLE SIGHT

Bee Correspondent Witnesses Launching of First Fabricated Ship at Hog Island Yard.

By EDGAR C. SNYDER.
Washington Bureau of Omaha Bee.
In conjunction with President Wilson, Mrs. Wilson and 75,000 other cheering Americans, I witnessed the launching of the first fabricated ship, built at the Hog Island ship yard, on Monday of last week. The "Quistconck," which is the Indian word for "a place for herding hogs," hence Hog Island, took the water majestically, and as the flagship of 180 vessels, this newest of ship yards, and the largest the world, is to launch this year, represents an achievement such as is only rivalled in the tales of the Arabian Nights.

When it is recalled that less than a year ago Hog Island was a barren waste of bog and marsh land, and practically inaccessible, lying along the Delaware river between Philadelphia and Chester, and now is a teeming city where 30,000 men and women are daily employed with a weekly payroll of \$1,000,000, you can form some idea of what this magic place is like. It has 80 miles of steam railway track inside the yard and 18 miles of macadam roadway. One hundred and ten million feet of lumber have been used for construction purposes. One hundred and fifty thousand piles running from 50 to 70 feet in length have been driven. The total of these two items would make a plank walk one foot wide long enough to encircle the globe.

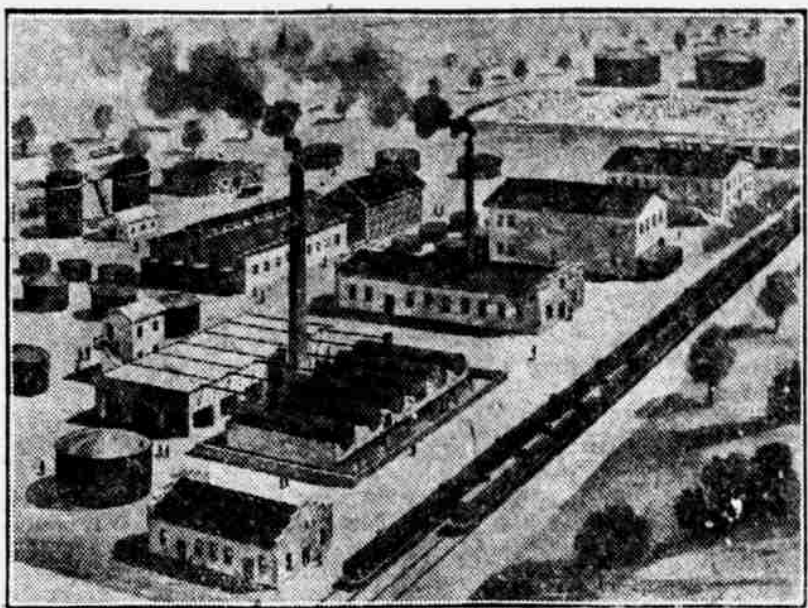
Three million feet of electric wire has been put underground, the work being done in the coldest winter weather Pennsylvania has seen for several generations. Twenty thousand shovels were used and 10,000 picks, to say nothing of 165 auto trucks, 20 locomotives as well as scores of steam shovels and also a fleet of dredging machines, tugs, lighters, etc.

Buildings Cover 25 Acres.
The administration buildings, shops, barracks, guard houses, etc., which have been erected, cover approximately 25 acres.

Eighty thousand electric lamps have been purchased and 650 electric motors, from one horsepower up to 500 horsepower capacity. An air compressor plant, capable of compressing 75,000 cubic feet of air per minute, the second largest in the world, has been installed, and a complete system of piping has been run from this to all the ways and outfitting piers.

On February 12, 1918, five months lacking one day, after the contract was signed, the yard was so far progressed as to permit the laying of the first keel. On August 5, as per schedule, the first ship was launched, ten and a half months after the signing of the contract, and on 40 of the other ways there are ships under construction with several nearing completion. To build the 180 ships under order

New Oil Refinery Will Be Built in Omaha This Fall



Plans are under way and a site has been purchased for a second oil refining company for Omaha. The Omaha Refining company has announced its incorporation for \$100,000 and its purchase of six acres of land on Avenue H in East Omaha. Option on 12 more acres adjoining has been secured.

Officers of the company are: Beverly C. Platt of Kansas City, president; J. F. Cogswell, Enid, Okl., vice president; L. V. Fox, Omaha, secretary-treasurer and general manager, and D. W. Lennox, superintendent.

The plant will be a modern one and will have an initial daily capacity of 1,000 barrels of crude oil. The principal products which the company will manufacture are gasoline, naphtha, kerosene, distillate, gas oil, road oil and fuel oil. Eventually the size of the plant will be increased and lubricating oil, greases and paraffin wax will be manufactured.

The 7,500-ton cargo ships are 400 feet long and 54 feet wide. They burn oil and run at the speed of 11 1/2 knots per hour, using 2,500 horsepower. The estimated cost is \$1,050,000 each. The 8,000-ton ships are 450 feet long and 58 feet wide. Their speed is 15 knots per hour and they are built as cargo and troop ships and require 6,000 horsepower of turbines. The estimated cost is \$1,650,000 each.

The ships are to be outfitted complete, even down to the table linen and silverware. The total tonnage under construction will aggregate about 1,400,000, and for the next year a ship will be launched at the rate of one every other day.

Yard Cost \$55,000,000.
While a vast army was battling with the elements last winter at Hog Island a congressional investigation of the expenditures was begun. Probers, professional and amateur, alleged that there was graft, but the launching of Monday last, in the presence of the biggest crowd ever assembled to watch the baptism of a daughter of Neptune, and as they looked over the 846 acres that had been marsh land less than a year ago, that enormous crowd was a unit in saying that the shipyard is the greatest the world has ever seen and is well worth the \$55,000,000 spent on it.

Men and women who had sent their sons and brothers and husbands into the terrible war for the freedom of

humanity felt an icy thrill as the vessel started from their midst. Those who spent their days watching for tidings of their own beloved, and the nights in broken sleep for fear of what the next day might bring forth, saw in the movement of the mighty ship the first shadow glide forth from American over the face of Germany.

Bottle Cost \$200.
The bottle that Mrs. Woodrow Wilson smashed across the prow of the Quistconck with such force and vim cost \$200. It was a most artistic creation. Its cord was of pure gold and the bottle was wound about and encased in red, white and blue cords that made a decidedly pretty effect. Mrs. Wilson's good right arm described an arc that was almost a semi-circle, and if she had the kaiser's head for a target could not have put more force into her blow. As a result the bottle smashed easily and a spray of champagne bathed the prow of the boat, while it scattered in all directions, falling in shower on Mrs. Wilson's dress, and taking in the president's palm beach suit on its way to spend itself in the air.

Garden County Objects to State Assessor's Figures
D. F. Fickes, county assessor of Garden county, writes The Bee that in his opinion the report of County Clerk Dewey to the commissioners, showing a reported reduction in acreage in 14 counties of the state is an error with reference to Garden county. Mr. Fickes states that instead of reporting 5,651 acres less in 1918 than in 1917, there is an increase shown by his duplicate reports of 41,635 acres. The figures submitted by Mr. Dewey were taken from the records of the state board.

Chatter Collected on "Politics Lane"

Candidates for county commissioner are having a merry time explaining to voters the new order of things relating to these offices. The last legislative session provided that county commissioners shall be nominated and elected by their respective districts, rather than at large. Four commissioners will be elected this fall and eight will be nominated at the primary which will be held a week from next Tuesday. Of the eight nominees one will be elected in each of the four districts involved.

The ballots which will be given to voters at the primary will indicate the county commissioner candidates for the various voting precincts.

J. P. Connolly has withdrawn as democratic county commissioner candidate in the Second-district, which limits this contest to Sophus F. Nebel, the present incumbent, and Adam Sloup.

Registrations and filings for the primaries have been closed by the election commissioner and ballots are now being prepared by a printer. Registrations indicate that the primary vote will not be heavy.

The following names will appear on the municipal court nonpartisan judicial ballot: George Holmes, Arthur E. Baldwin, Carl T. Self, C. W. Peasinger, Fred D. Cherniss, R. W. Patrick, W. E. Lovely, Percy Wheeler and Julius S. Cooley.

Circulars are being distributed to promote the candidacies of the following legislative ticket under the caption of "organized labor candidates": Republicans, Joan Lynn, Henry J. Beal and John Larsen; democrats, John Casson, C. L. Shamp and Michael Courtney.

P. A. Barrows of Lincoln, republican candidate for lieutenant governor, makes this announcement on his cards: "A square deal for every piece of legislation before the state senate."

Abel V. Shotwell, republican candidate for county attorney, promises that if he is elected he will be "the Nemeses" of automobile thieves "The best way to stop automobile thefts is to prosecute the fences. Automobile thieves can not operate at a profit unless they have a place where they can dispose of their stolen cars," he states.

"Tower and Power" Allen of Lincoln called at The Bee office during the week to announce that recent opposition developed against his candidacy for the legislature was due to his "everlasting ability to put it over."

Albert W. Jefferis
For Congress
Republican
Primary, August 20

AUGUST FURNITURE SALE

At the **Union Outfitting Company**

You Save from 10 to 50 Per Cent

Hundreds of beautiful Floor SAMPLES and DISCONTINUED patterns that have accumulated from the past season's HEAVY selling must be closed out at once. When you consider the SAMPLES are offered at from 10% to 50% LESS

than our usual LOW prices — due to our INEXPENSIVE location, combined with LOW operating expense, you will then realize the WONDERFUL saving opportunities of this AUGUST FURNITURE SALE.



Big Sale and Demonstration Torrington Electric Vacuum Sweepers

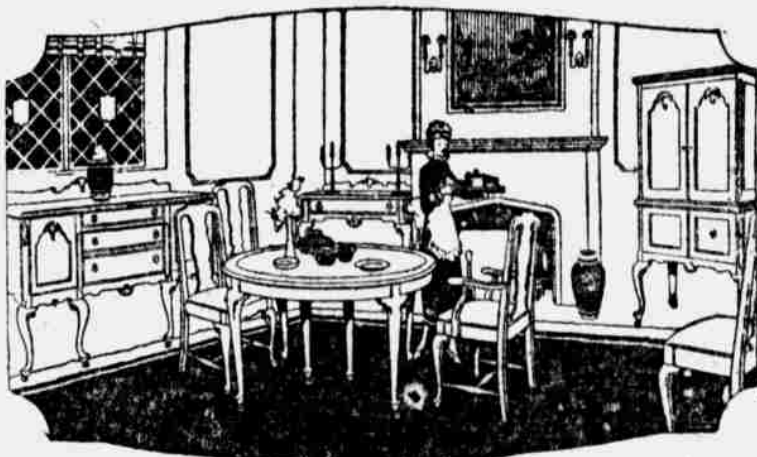
This Week, Monday to Friday, Inclusive Special Factory Representative Present

AT SAME PRICE AS NATIONALLY ADVERTISED. **\$39.75**

Terms: \$1 Cash; \$1 Per Week

A Torrington Electric Vacuum Sweeper to be GIVEN AWAY FREE on Friday, August 16, at 4 o'clock. Full information can be obtained at our store.

Thousands of High Grade Samples; Many at Less Than Present Wholesale Prices



Select Your Home Outfit Now. Goods purchased during this sale stored free and delivered later if you wish.

DINING ROOM FURNITURE

Many beautiful, complete sample suites and many individual sample pieces in TABLES, BUFFETS, CHAIRS, etc., at greatly reduced prices:

TABLES	CHAIRS	Complete SUITES
\$12.50 \$16.50	95c \$1.15	\$51.50 \$67.50
\$19.50 \$27.50	\$1.45 \$1.95	\$82.50 \$98.50
\$34.50	\$2.75	\$127.50

Bed Room Furniture

Many splendid Sample Suites — many odd Dressers, Chiffoniers, Dressing Tables, etc., all greatly reduced.
Dressers, at \$14.95 - \$17.50
\$21.50 - \$27.50
Chiffoniers, at \$10.75
\$14.50 - \$19.50 - \$26.50
Complete Suites, at \$59.50
\$72.50 - \$97.50 - \$122.50



Furniture for Lawn, Porch or Living Room
In Fiber and Reed — many pieces upholstered in imported Cretones and Tapestries. Sale prices, \$3.15 - \$4.95 - \$7.75
\$10.50 - \$13.75
\$17.50



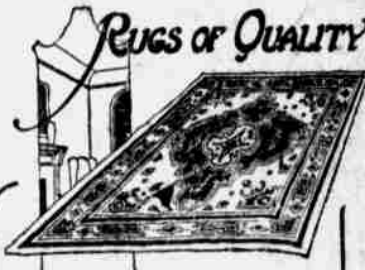
Living Room Furniture

Sample Rockers in wood and upholstered seats.
\$3.75 - \$5.50 - \$6.50
\$9.75 - \$12.50 - \$17.50

Davenport and Duofolds in Morocco, Genuine Leather and Tapestry.
\$27.50 - \$37.50
\$44.50 - \$57.50

EVERY DAY HOUSEHOLD VALUES

Aluminum Percolators, 7-cup size, at.....	\$1.19
Folding Step Ladder Stools, at.....	.79c
Folding Ironing Boards, sale price.....	\$1.35
Taborettes, solid oak, our price.....	27c
Wire Dish Drainers.....	24c



RUGS
Many sample and discontinued pattern RUGS at reduced prices.
Seamless Brussels Rugs, 6x9 feet sizes, our price \$12.95
Seamless Brussels Rugs, 9x12 feet sizes..... \$22.50
Mottled Axminster Rugs, in 9x12 feet sizes... \$26.95
Seamless Wilton Rugs, in 9x12 feet sizes, sale price, only..... \$36.50

Advance Autumn Modes



DRESSES COATS SUITS

THE Advance Guard of Fall Fashions are now ready—revealing the truth that war has not dampened the creative minds of apparel designers—and while the scarcity of desirable apparel can not be denied, however, this store is as thoroughly prepared with immense stocks as at any period in the past.

The New Fall

The New Fall

The New Fall

Dresses

Coats

Suits

Wool Jersey, Men's Wear Serge, Cabardine, Satins, Georgette, Foulards, Crepe de Chine.

Velour, Bolivia, Silvertone, Suede, Velvets, Plush, Silk Velour, Tweeds, Pile Fabrics.

Oxford Cloths, Serges, Poptins, Silvertones, Evora, Velours, Duvet-du-Laine, Broadcloths.

THE simple lines are strikingly graceful, introducing hosts of clever new style "kinks." Dark autumn shades add a richness you'll admire.

GENEROUSLY trimmed with rich furs. These straight line coats with their rich colorings, large pockets will win your favor on first sight.

STRAIGHT line silhouette is the commanding feature of the new suits; about three-quarter length jackets, and skirts narrower than last season. Many are severely tailored.

Attractively Priced From

Priced Now, From

Moderately Priced From

\$18.75 to \$85

\$25 to \$195

\$29.50 to \$150

1508-1510 Douglas St. **Julius Orkin** 1508-1510 Douglas St.

UNION OUTFITTING CO
S.E. COR. SIXTEENTH AND JACKSON STREETS
THE PEOPLE'S STORE. OPPOSITE HOTEL ROME