

Summer Hours:

Our store opens daily at 8:30 A. M. and closes at 5 P. M. except Saturdays 6 P. M.

BURGESS-NASH COMPANY**"EVERYBODY'S STORE"****Ask Mr. Foster**

For information about summer vacations, trips, hotel accommodations etc. No charge. Balcony

Sunday, June 23, 1918

STORE NEWS FOR MONDAY

Phone Douglas 137



A Restful Mid-Summer Haven is this Store

From the glare and heat of the street it offers a delightful refuge. The cool, long aisles, the large, airy, spacious floors, with ventilation on three sides, are a real boon to those bent on their summer preparations, personal or for the home.

Everything has been done to make shopping easier, more satisfactory.

Plenty of salespeople who know their merchandise, splendidly maintained stocks of seasonable needs, point out to everybody that this store is ready to help with all its knowledge and facilities.

—To be of the "Greatest service to the greatest number."

Burgess-Nash Co.

ON THE SQUARE AT THE ELEVATOR MONDAY

Women's Night Gowns \$1.65 and \$1.95

Dainty styles in wide variety, of sheer nainsook elaborately trimmed back and front with smocking, rows and rows of val lace insertion; also chemise gown of sheer pink batiste, daintily trimmed with colored smocking, etc.

Burgess-Nash Co.—Main Floor

We Have Many Good Positions for Women

THE work of the world must be done, and this country is speeding up production in all lines as never before in its history.

Without the help of women, this work could not be done. They are proving their efficiency in many lines, but they are especially valuable in the great work of distribution of merchandise.

We Need Saleswomen

in practically all departments. Permanent positions are assured for many experienced women, as well as many who prove themselves adaptable to the work required.

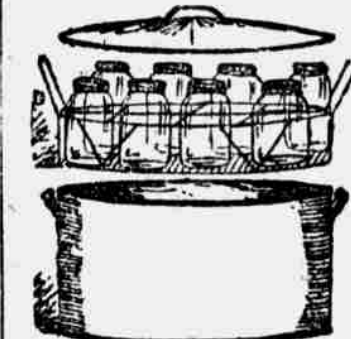
Women for Part Time

There are many women who can give part of their time to such work from 10 A. M. to 4 P. M., and to such we offer splendid inducements.

Apply employment office, Balcony, Main Floor.

"We Eat All We Can, and Can What We Can't"

AN American explained to an English visitor who was commenting on the abundance of American crops.



Nowadays with the whole world to feed as well as ourselves we do not at all we can but can as much as possible. Just now we are

Putting Up Cherries

Ball Bros. Mason Fruit Jars, complete with porcelain lined caps and rubber rings, pint size. Dozen, 95c.

Ideal fruit jars, with glass tops and rubber rings. Pint size, dozen, \$1.15.

Handy Fruit Jar Holders, make home canning easy, fit any size jars. Each, 10c.

Tin top Jelly Glasses, each, 5c.

Porcelain lined Fruit Jar Caps for Mason jars. Dozen, 35c.

Burgess-Nash Co.—Down Stairs Store

"CREX" Summer Rugs Specially Priced

As further shipments of these splendid summer rugs are not available we advise early selections. Most desirable patterns for porches, sun-room and sleeping porches. Herringbone weave.

"Crex" rugs, 36x72, at \$1.75

"Crex" rugs, 4-6x7-6, at \$4.75

"Crex" rugs, 6-8x9-0, at \$6.50

"Crex" rugs, 8x10, at \$8.50

"Crex" rugs, 9x12, at \$10.50

Burgess-Nash Co.—Third Floor

PRETTY New Bathing Caps, 15c and 37c

A special purchase at about 1-3 the regular price enables us to price them at the ridiculously low price of 15c and 37c each.

Burgess-Nash Co.—Main Floor

Dainty Shadow Proof White Petticoats in Three Attractively Priced Groups

SUCH petticoats are indispensable with sheer frocks for dress or sport wear. The low prices quoted for Monday will make liberal selection most profitable.

THREE GROUPS—

AT \$1.50

Shadow proof petticoats with double flounce of deep embroidery or plain flounce, tucked and scalloped bottom.

AT \$1.95

Shadow proof petticoats of heavy muslin top, finished with French circular or straight flounces of embroidery insertions, hemstitching and tucks.

AT \$2.95

Shadow proof petticoats in a variety of styles. Made of the sheerest lawns, batistes and nainsooks, elaborately trimmed with imported embroidery and insertions, ribbon and beading.

Burgess-Nash Co.—Main Floor



New Style Arrivals in Mina Taylor Dresses
Make this Offering for Monday One of More than Ordinary Importance

WE illustrate five splendid styles of these superior dresses, models suitable and desirable for any occasion; the values are unusual.



No. 3512—Mina Taylor Hoover Conservative Dress

\$4.75

JUST the dress for war garden work or for wear when canning and preserving. Made of good quality chambray, in white, pink, blue and lavender, made with reversible front and finished with detachable collar and cuffs. Sizes 36 to 44.

No. 34501—Mina Taylor House Dress

\$3.95

AN ideal dress for morning wear, made of percale in striped and conventional designs. Fitted waist and finished with barred pockets, wide belt, sailor collar and turn back cuffs. Sizes 34 to 44, at \$3.95.

No. 2010—Mina Taylor Street Dress

\$10.50

MERCERIZED linen in street shades, fitted surplice waist, trimmed with pearl buttons, hemstitched and cluster tucked batiste collar and cuffs. Pleated skirt finished with side pockets. Sizes 36 to 42, at \$10.50.

No. 34545—Mina Taylor Porch Dress

\$7.95

A CHARMING model of fine tissue gingham, in the newest plaid, a combination of colorings, finished with hemstitched organdie collar, cuffs and pockets. Sizes 34 to 42. We consider it an exceptional value at \$7.95.

No. 2030—Mina Taylor Summer Frock

\$16.50

MARTHA WASHINGTON model, especially desirable for Red Cross work, made of sheerest organdie in dainty colorings. Gathered skirt finished with hemstitched hem at knee, waist trimmed with hemstitched fichu.

Burgess-Nash Co.—Second Floor

Choice of Any Boy's Suit in the Down Stairs Store Monday, \$5.95

THAT is the offering from the Down Stairs Store for Monday, only.

The suits are knickerbocker Norfolk style, made of good quality materials, in a splendid selection of patterns for boys 6 to 18 years. The values are really extreme at \$5.95.

Boys' Wash Suits, 79c

Made of cambric, linens and madras; for ages 2 to 8 years; good selection of patterns and colorings.

Boys' Rompers, 79c

Blue or gray chambray, plain white and fancy combination; for ages 2 to 8 years, at 79c.

Men's Work Pants, \$1.50 to \$4.95

Made of heavy dark striped worsteds and cassimeres. Good selection of patterns at \$1.50 to \$4.95.

Men's soft collars at 5c.

Men's linen collars, 10 in box, 27c.

Men's washable neckwear, 2 for 25c.

Men's chambray shirts at 79c.

Burgess-Nash Co.—Down Stairs Store



Featuring a Genuine Hartman Wardrobe Monday at \$32.50

A REAL Hartman wardrobe trunk. Constructed of 3-ply veneer basswood, fiber covered and fiber bound; full size with cushion top, found only in the Hartman. Hat compartment, laundry bag, shoe pocket, unbreakable hangers, fancy cloth lining; \$32.50.

Burgess-Nash 400-X, Special Hartman Wardrobe, \$59.50

All round corners, 3-ply veneer wood fiber covered and fiber bound. Cushion top with soft, firm, even pressure on every garment, holding each garment without a wrinkle. Shoe pocket, convertible hat compartment, laundry bag, lined with handsome two-tone blue lining, special, \$59.50.

Fiber Dress Trunk, \$13.95

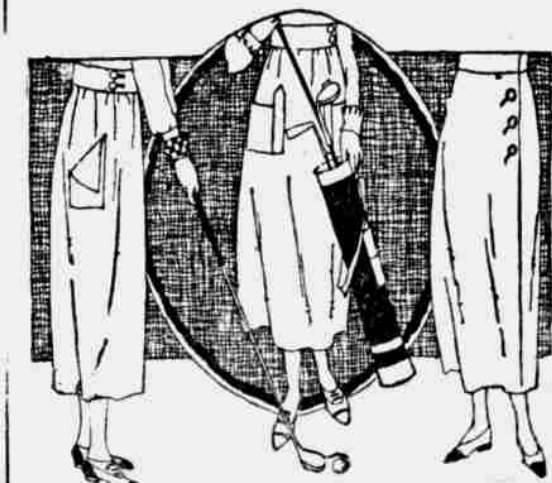
36-inch dress trunk, all fiber covered and fiber bound over 3-ply veneer basswood, heavy corners; deep tray, fancy lined; very special, \$13.95.

Burgess-Nash Co.—Fourth Floor



Extra Special!

Two Groups of White Skirts at Better than 1/3 Under the Regular Price at \$3.95 and \$4.95



THAT'S the way we bought them from the maker and that's the way we offer them to you.

The skirts are made in a big variety of clever new styles from such materials as Bedford cords, plain white and fancy shades, golf cords, also plain and fancy gaberdines.

They're just the sort of skirt you want for afternoon and outing wear and there is no doubt but you will find here the very style and material that suits you best at a saving of a third or more.

Burgess-Nash Co.—Second Floor



Through the New Era Club Plan Five Cents First Payment Brings to Your Home a

"Standard" Rotary Sewing Machine

COMMENCING with the first payment of 5c, which secures delivery at once of the Best Sewing Machine Made if you place your order in time, then a payment is made each week as follows: 10c the second week; 15c the third week, increasing the payment 5c more each week (according to table) until all payments are made in full, then the machine is yours for life.

10c

SAVED on as many payments as you pay in advance.

READ CAREFULLY—Each New Era Member may prepare the final or last payments to fall due, and for each such prepayment shall receive a cash dividend of 10c.

FOR EXAMPLE, by prepaying 38 payments on your machine a dividend of \$3.80 will be allowed, 10c on each of the 38 payments, prepaid. If the last payment only is prepaid, a dividend of 10c will be allowed, etc.

No Restriction as to Selection—You can choose from all styles of Sit-Straight Standard Rotary, including the famous "Duchess" and "Princess" Half-Cabinets at comparatively low prices.

Copyright 1914, by F. C. Henderson Co.

Table of Weekly Payments

\$0.05	\$0.55	\$1.05	\$1.55
1st Week	11th Week	21st Week	31st Week
.10	.60	1.10	1.60
2d Week	12th Week	22nd Week	32nd Week
.15	.65	1.15	1.65
3d Week	13th Week	23rd Week	33rd Week
.20	.70	1.20	1.70
4th Week	14th Week	24th Week	34th Week
.25	.75	1.25	1.75
5th Week	15th Week	25th Week	35th Week
.30	.80	1.30	1.80
6th Week	16th Week	26th Week	36th Week
.35	.85	1.35	1.85
7th Week	17th Week	27th Week	37th Week
.40	.90	1.40	1.90
8th Week	18th Week	28th Week	38th Week
.45	.95	1.45	1.95
9th Week	19th Week	29th Week	Final Payment 138
.50	1.00	1.50	1.95
10th Week	20th Week	30th Week	29th Week

Standard Rotary, \$39

Six-drawer style—the world's best machine, lock and chain stitch—central needle style—

5c

First Payment—immediate delivery—then every week you pay 5 cents more than the previous week's payment.

