

PRactical PARAGRAPHS

By S.P. LaDue

Banging Doors.

The average car owner may be surprised to learn that banging the car doors is a bad practice...

Fan Fiasco.

Cooling fans of the type that have the blades riveted to a metal hub, should be examined occasionally...

Fitting Spark Plugs.

In fitting a spark plug in a cold cylinder be very careful not to screw it too tight...

Valve Stem Clearance.

Inlet valves do not get nearly as hot as exhaust valves and consequently do not expand as much...

Flywheel Knock.

It sometimes happens that the bolts holding the flywheel to the flange on the crankshaft works a trifle loose...

Marking the Wiring.

A little dodge that saves much time on occasion is the marking of the numerous electric wires...

Anti-Black-Hand.

For the car owner who does his own work, the question of keeping his hands fit for police society is a real problem...

BEAUTY HOLDS ATTENTION OF MOTORIST TODAY

"The story of civilization is a story of the development of an idea," said T. E. Jantzen...

"In the not far distant past the automobile was looked upon only as a mechanical project, usually lacking in force and appeal..."

"And remember, one of the very important factors in the production of this car is the knowledge of the men who direct the work of manufacture..."

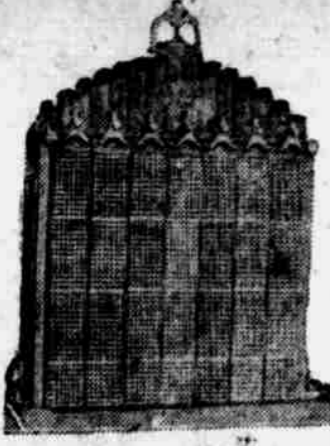
A Wise Man.

Tonio staggered along with the two signboards under his arm. He felt very proud. Had he not been chosen from the gang to perform this special mission?

Tonio leaned far over the rail to enjoy the sight and in the act dropped one of the beautiful signs. The blue water caught it and held it, dancing for a moment, far, far below, then swept it from view.

Tonio was a man of resources as he himself often reflected. Grasping the remaining sign firmly, he walked half way across the bridge and nailed the board on a pillar—conspicuously.

And later, vehicles which crossed passed a board on the rail in the center of the bridge which read, "This bridge is not safe. Trucks or any vehicles heavily laden must not cross."



Seven-Section Radiator Features New Dart Truck



Announcement was made last week to the effect that the Victor Motor company had closed a contract with the Dart Motor Truck company...

The Dart is a complete truck made in one, two and three and one-half-ton sizes.

Among the features of the Dart treatment will leave the hands in good shape for soap and water and tar soap will be found admirable in this connection.

Old Tubes.

An old inner tube, which has passed its usefulness as such, may still be made to render some service.

Radiator Leaks.

When the radiator has been seriously injured, "home remedies" are generally useless and a soldering job in the repair shop is the only solution.

Valve Tappet Adjustment.

There occasionally develops in an engine normally quiet in operation a tapping or knocking, which is due to maladjustment of one or two of the valve tappets.

three and one-half-ton job is a sectional radiator. As the photograph above will show, each of the seven sections is a separate unit, connected, of course, should one or more of these units become damaged it is possible to secure perfect circulation with only two sections.

but eliminates buying an entire new radiator when accidents occur.

The manufacturers feel that this radiator will find much favor in the war zone, where, by the way, numerous Dart trucks are being sent.

E. H. Scripps, general manager of the Victor Motor Car company, feels that transportation is a very vital factor in today's activities and they look forward to a great business among the farmers.

This is not only a desirable construction from a service standpoint,

Lexide Battery



and Delco Starter Service

"DON'T wait for trouble to make its appearance"—forestall it by letting us regularly inspect, test and supply your battery with pure water.

All batteries—all cars L. HILLER Delco-Exide Service Station, 2024 Farnam Street Telephone Douglas 3697.

THE GIANT THAT LIVES IN A BOX



Why Allen Cars Are Good

They are good because they are built in a big, finely organized factory.

In a factory where particular craftsmanship is and always has been a fundamental.

In a factory of twenty-five years standing, by a company whose moral and financial rating is very high.

All the vital units of this car are really manufactured in these plants.

And this latter fact means a better product and a lower selling price, quality considered.

It means a stability in the actual car and it also means permanence in the trade.

With a huge investment in plant and machinery, the Allen Motor Company has too much at stake to build anything but a car which shall insure continued success.

As dealers, we are proud to sell the product of such a company.

We thoroughly believe that the Allen is the most serviceable, comfortable, economical and dependable motor car obtainable at anywhere near its price.

\$1095

You are invited to inspect the Allen

STANDARD MOTOR CAR COMPANY CARL CHANGSTROM, President, Western Distributor, 2020-2022 Farnam St. Omaha, Neb. Phone Douglas 1705.

Danish Merchants Close Shops To Avoid Aiding the Huns

J. H. Hansen of the Jones-Hansen Cadillac company received a letter from his father, who lives in Denmark, last week.

Coal costs \$250 per ton, and even though gasoline is very high, it is cheaper than coal for transportation. The letter states many businesses have come completely to a standstill and that many Danish business men have discontinued their business so that they no longer could be forced from outside pressure to furnish food products to Germany.

One paragraph of the letter translated literally is as follows: "We have all put our faith in the great

Americans. We feel confident that they will be able to restore peace and order in the world, and while peace is still far off, the great American nation is showing that its people are the ones to whom we must look for a satisfactory ending of this terrible world conflict."

Mr. Hansen of Omaha adds that this shows plainly how the small nations are looking toward America to win this war and are putting their faith in the great country across the seas, where many of their young men have made their homes.

Storage Battery Company Soon Moves Into New Home

The Nebraska Storage Battery company, Willard service station, will

move to its new building at Twentieth and Harney streets, June 1. The new station will be classed as one of the most modern in the country.

Inside service will be one of the biggest features. The building has 12540 square feet of floor space, of which 6000 square feet are to be used exclusively for the purpose of giving the car owner inside service; 5,000 feet will be taken up by the repair shop and stock room, leaving the balance for private and general offices, etc.

A comfortable parlor adjacent to the general offices has been arranged for the convenience of the lady car drivers.

The entrance is to be on Harney street, and the exit on Twentieth street. Another convenience will be the electrically-operated doors, that can be controlled by the telephone operator in the general offices or by switches in the service office and at each door.

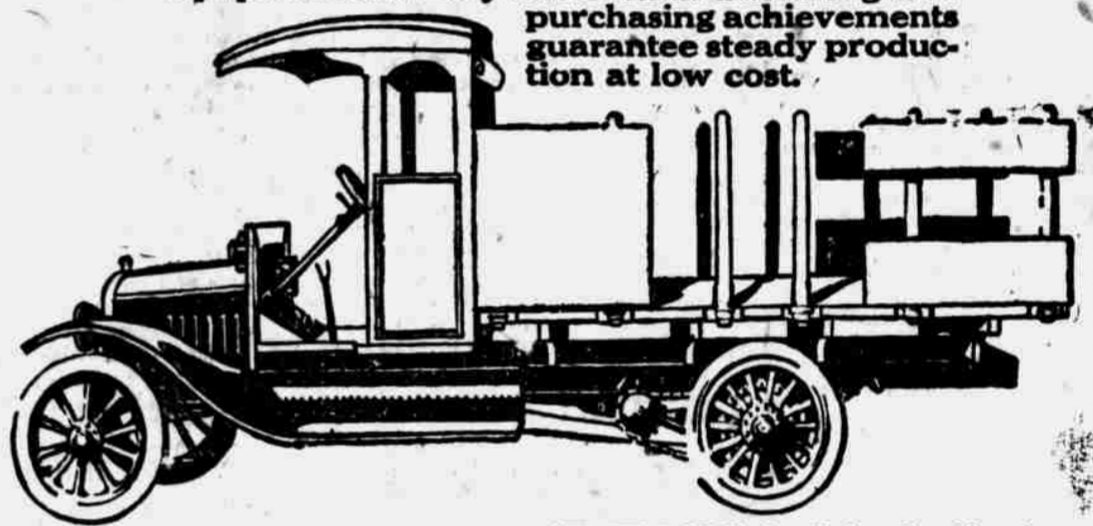
Everybody reads Bee Want Ads.

Why No Other Manufacturer Can Approach this Low Price

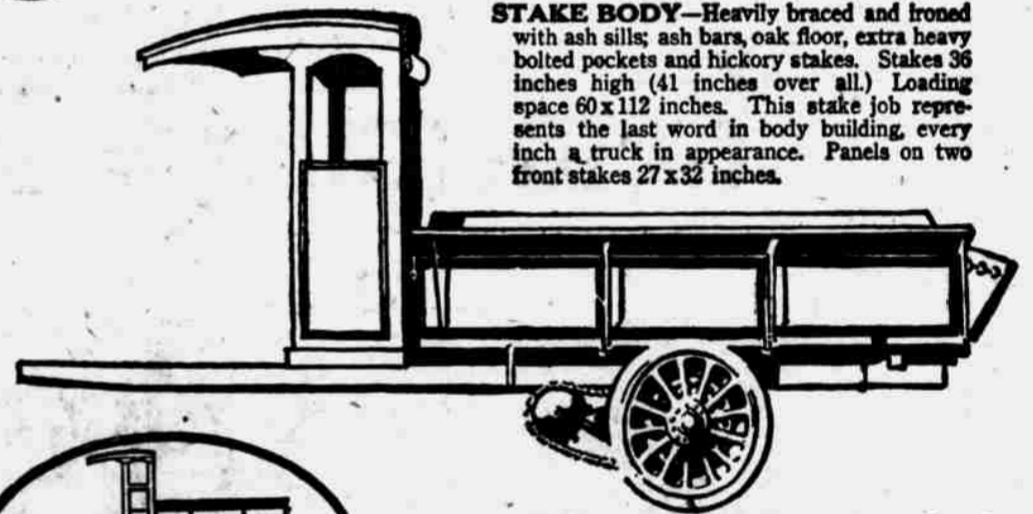
\$400 for a complete one ton Graham Brothers Truck Builder for Ford cars—old or new—with Cab, and Stake or Express Body

Truck-Builder Chassis Alone \$325, all prices f. o. b. Evansville

- 1—Graham Brothers' factory facilities—17 acres of floor space devoted to manufacturing truck-builders and truck bodies is the best equipped in the truck attachment industry. 2—Graham Brothers' central location to big sources of supply of materials for the Truck-Builder saves shipping charges and time. 3—The financial stability of Graham Brothers—with no heavy unproductive overhead charges, puts all the money value into the product itself. 4—Labor facilities—stock inventories—power equipment and 20 years of manufacturing and purchasing achievements guarantee steady production at low cost.



STAKE BODY—Heavily braced and ironed with ash sills; ash bars, oak floor, extra heavy bolted pockets and hickory stakes. Stakes 36 inches high (41 inches over all). Loading space 60 x 112 inches. Loading stake job represents the last word in body building, every inch a truck in appearance. Panels on two front stakes 27 x 32 inches.



EXPRESS BODY—Heavily braced and ironed with sills of ash; side flare boards and panels are of cottonwood; heavy selected ash bars and oak floor. Loading space 45 1/2 x 106 inches. Panels 18 inches high inside. The end gate is extra heavy, fully ironed with full chain.



THE CAB—Securely ironed and braced. Roof full slatted with thirty slats, covered with best water-proofed, black oil duck. Three ribs moulded to shape. End panels and side panels, cottonwood, light, strong, well finished. Cab sills, extra heavy selected ash. Top rails of cab sides, cottonwood. Posts, ash. Moldings, poplar, white leaded, impervious to water. Side panels, heavy gauge metal. Posts at back, ash; panels, cottonwood. Heavy, black oil duck, back curtain fitted with large mica light. "Lazy Back" on driver's seat, full width cushion, padded and covered with heavy imitation leather.

Truck Chassis AXLE—Hess—2 1/2 x 1 1/2 inches, solid forged highest grade carbon steel. BEARINGS—Bock—Over-size roller. BRAKES—14 x 2 1/2 inches, expanding. SPRINGS—Hess—Best grade steel, semi-elliptic (of special design) on each side at the

rear, 2 inches wide, 42 inches long. Strengthened by extra heavy hangers and fittings. SPROCKETS—Cullman—Steel, mill cut. CHAIN—Cotter Pin Type—All links removable. DRIVE—Double chain, 3/4-inch diameter, roller 3/4-inch wide, 1 1/4-inch pitch, of heavy roller type for steel cut sprockets. Ultimate strength 19,000 pounds. WHEELS—Frodden—Heavy artillery type, 12 2-inch spokes, best grade hickory, 32 x 3 1/2 in. TIRES—32 x 3 1/2 inches, rear. Pressed on type—standard make. Ford pneumatic, front. LOAD DISTRIBUTION—Chassis, 50% on rear axle, full load 90% on rear axle. WHEEL BASE—125 inches. CARRYING CAPACITY—2,000 pounds dead weight, 50 per cent. overload. FRAME—Length 168 inches, width 32 inches, 1 1/2 x 4 inches.

READY FOR YOU—Bring in your Ford—or let us furnish you the job complete with new Ford power plant and the body you select.

Complete Line of Graham Brothers Truck-Builders

1 Ton Truck-Builder for Fords (Chain Drive). 1 1/2-2 Ton and 2 1/2-3 Ton Truck-Builder for Dodge Brothers Chassis (Torbensen Drive). 1 1/2-2 Ton and 2 1/2-3 Ton Truck-Builder for Other Cars (Torbensen Drive). 3-5 Ton and 5-7 Ton Traction Truck-Builder with Fifth Wheel and Semi-Trailer, for Dodge Brothers Chassis, Ford and Other Makes of Cars (Torbensen Drive).

TRUCK BODIES—Nine distinctive types of motor truck bodies for individual requirements—prices on request.

We Maintain a Complete Assembly Plant and Service Station For All Users of Graham Brothers Truck-Builders.

GRAHAM BROS. SALES CO., 2012 Farnam St., Omaha, Doug. 1765. DEALERS WANTED.

Graham Brothers of Evansville-Indiana. Includes contact information and a form for requesting more information.