

VETERAN TRUCK WILL DUPLICATE GRUELING TEST

After Being in Service Seven Years, Pierce Will Duplicate Former Hard Run.

Buffalo, N. Y., May 18.—Traveling over the same route it followed seven years ago when its inter-city test trip aroused country-wide interest, a Pierce-Arrow truck, which since has been in daily service, will repeat the performance Tuesday, May 28, when it will run from New York to Boston. The event has been arranged by George M. Graham, chairman of the national motor truck committee of the National Automobile Chamber of Commerce at Washington, who is assistant commercial manager of the Pierce-Arrow Motor Car company. It is his aim to dramatize the importance of inter-city truck transportation in solving the problem of railroad freight congestion.

The truck, known as Pierce-Arrow truck No. 1, will be driven by Harry Ward, truck sales manager of the Pierce-Arrow Sales company of Buffalo, who piloted it on the original test run.

To Attract Attention.

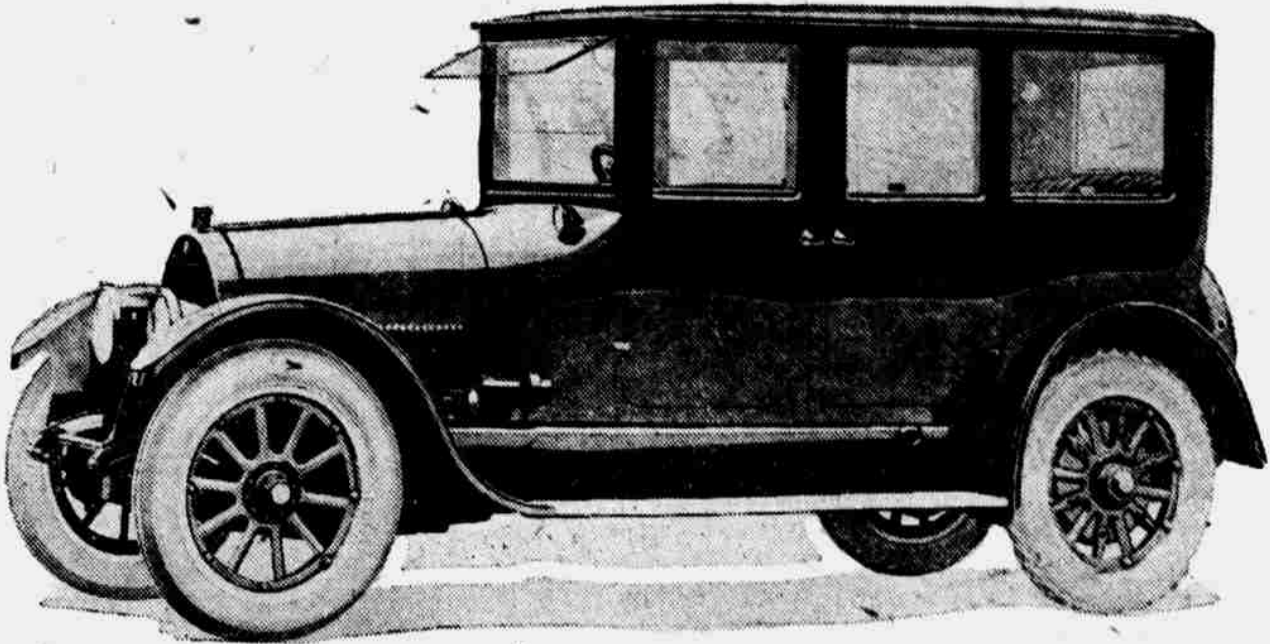
"Aside from proving the durability of the Pierce-Arrow truck," said Mr. Ward, "the anniversary run will draw the country's attention to the fact that motor truck transportation between cities has developed as a most important factor in wartime industrial and commercial activity."

"Another interesting phase of the matter pertains to the problem of depreciation. The test will show that although the truck easily has written itself off the books after seven years of service, depreciating to the extent of its full value figuratively, actually it still is an efficient vehicle, able to perform what it did seven years ago."

Worm Drive Stands Strain.

Veterans in the truck business recall that when the truck made its original trial run the worm drive was entirely new in this country and its practicability was being debated

Cadillac Suburban Makes Appearance This Week on Omaha Automobile Row



Recognizing the fact that there is a rapidly growing demand for a motor car that is suitable and comfortable in all weathers and all seasons the Cadillac Motor Car company has produced a new type which the owner himself can drive in town and in touring, in winter and in summer.

The new car, known as the Suburban, is built on the 132-inch wheel base Cadillac chassis in order to afford ample room for its seven passengers and the impediments which is ordi-

narily carried in touring. The front seat is unusually wide and set at an angle which robs a long ride or drive of much of its tedium. The auxiliary seats are large, comfortably upholstered, and so placed as to afford maximum room both for their occupants and those in the rear seat.

Four wide doors provide entrance and exit for front and rear compartments. Door windows are readily lowered to their full length, and the body windows at the rear seat drop

two-thirds, affording complete freedom of air circulation. The side and rear windows are provided with silk sunshades. Body construction throughout is of aluminum.

The new Suburban is a well balanced car, and has demonstrated to the satisfaction of its designers its great comfort on country roads. It is a car of the utmost utility, practical for summer and winter use, and for all the variations between the extremes of heat and cold.

Cole Eight Motors Get Their Tryout in the "Silence Room"

"Consciousness of resistless power without any perceptible effort or sound; in this to be found one of the chief charms of the remarkable performance of the Cole Aero-Eight." This was the comment of a very distinguished automotive engineer who experienced these "new ranges of Aero-Eight control."

This silent, yet irresistible flow of power from two to 72 miles an hour, is due to the wonderfully designed and carefully perfected motor, according to officials of the Cole Motor Car company. Before the motor is finally placed in position in the chassis it is taken into the "silence room." This room is located in the midst of the din and bustle of the plant, but, once inside with the door sealed, the visitor

at the plant finds himself taken suddenly away from the noise of the busy workaday world and in an atmosphere entirely devoid of any outside sounds.

The abrupt change is bewildering at first and the absolute silence is almost oppressive. In this room every motor is given a final inspection and adjustment by experts. Their skilled ears are trained to the point where they can detect any false noise in the motor as accurately as the director of a symphony orchestra senses an instrument the least bit out of tune. These men carefully adjust every working part until the motor performs at all speeds without the least noise or fuss. All play in valves and pistons is taken up.

To the uninitiated seeing these men for the first time, their display of skill in the detection of every sound and the accuracy with which they quickly and surely correct it, is fascinating.

AUTO COVERS 41,855 MILES; NO REPAIRS

Ohio Man Drives Paige Motor Car for Three Years Without Experiencing Any "Trouble."

Forty-one thousand eight hundred and fifty-five miles in public service without a replacement is the record of a Paige automobile owned by D. G. Burkhardt, of Dayton, O. Mr. Burkhardt purchased the car in April, 1914, and immediately placed it in the rental service. From that time until now, a period of three years and six months, the car has been in almost daily use and never once has been laid up for repairs.

"I have kept an accurate account of my gasoline, oil and tire bills," says Mr. Burkhardt. "The car has used 2,506 gallons of gasoline and 52 gal-

lons of lubricating oil. The average has been about 17 miles to the gallon of gasoline, and nearly 800 to the gallon of oil. I recently bought my sixth set of tires, getting an average of almost 8,000 miles for each tire.

"Most of my trips have been from a few miles to a day's run. This summer, however, I took a party on a 24 days' run through Colorado, the round trip being 2,950 miles. The car carried a 1,100-pound load."

Leaks in Float.

An excellent way to locate suspected leaks in the carburetor float is to immerse the part in hot water. In this way any gasoline in the interior will be vaporized and will force its way out of the hole, which may be located by watching for the bubbles to rise. The float should of course be removed from the water the instant the bubbles cease arising.

Anti-Scale.

The motorist may take a hint from steam boiler engineers, by mixing a little glycerine with the cooling water

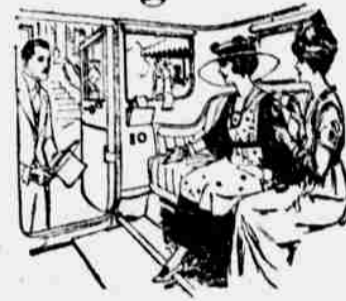
to prevent the formation of scale, in which capacity it is said to be very efficacious. The glycerine should be used in proportions of half a pint to each five gallons of water.

Leather Boots.

It is very important that regular inspections should be made of the leather coverings or "boots," which protect the universals and other parts. Flying stones or sticks are apt to destroy these boots, permitting the lubricant to leak out and giving entrance to dust and dirt. Look them over once a month anyway.

Split Gear Slipping.

It frequently happens that a split gear develops a tendency to slip on its shaft. As an emergency measure this may be remedied by wrapping sandpaper, which has been doubled over the shaft, so that it acts as a shim between gear and shaft. In this way both gear and shaft have a rough sanded surface against them, which effectively prevents slippage.



As for social calls, receptions, etc., the Closed Car is the most appropriate

MARMON

34

Advanced Engineering



For attending to charities or for shopping, the Closed Car is the favorite

The Limitless Uses of the Marmon Limousine

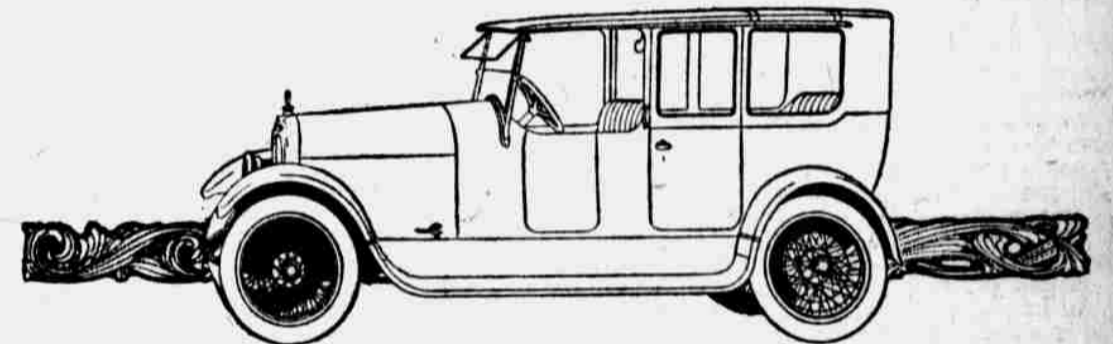
The Marmon Limousine has had much to do with making the Closed Car the favorite with many motorists for practical service every month in the year.

In pleasant weather they travel with lowered windows—on wet or

dusty days, the closed car shuts out all discomforts.

Marmon Closed Cars are especially favored because there is nothing more beautiful and comfortable.

The motor is responsive, the cars light and obedient—lighter even than comparable cars with open bodies.



The Marmon Limousine is a noble car—handsomely appointed, roomy, light-weight and comfortable

These Marmon Closed Cars easily travel anywhere that touring cars go. They possess a degree of roadability that has never been equalled. This so well adapts them to country roads that the Marmon Closed Cars are now extensively used for touring.

As for city use—there is nothing better. For shopping, calls, business and

formal functions—for every time and any place, the Family Sedan, Landulet, Limousine and Town Car are appropriate and in many ways decidedly superior.

In these days when America's program calls for the greatest measure of service, the motor car buyer cannot do better than select a Closed Car, and a Marmon.

136-inch wheelbase—1100 pounds lighter

H. Pelton

Marmon Cars
2205 Farnam St.

We Can Help You Cut Your Tire Costs

WE, the undersigned Goodyear Service Station Dealers, are part of a nation-wide plan for tire conservation.

The Goodyear Tire & Rubber Company is sponsor for this plan, which aims to lower tire costs for every motorist who chooses to benefit by it.

Goodyear's part in the plan is to build the highest possible efficiency into every Goodyear Tire.

Our part in the plan is to back up this efficiency with the kind of service that will give users the greatest possible returns.

If you will let us exercise this service in behalf of the Goodyear Tires you use, we promise you that it will save you money.

It is a service that starts with careful inspection, that remedies the causes of premature tire ruin, that teaches you how to care for your tires.

It is intended solely to increase your satisfaction with the Goodyear Tires you buy from us.

For upon that satisfaction we know depends the future of our business with you.

This sign identifies the Goodyear Service Station Dealer.



Goodyear Tires, Tubes and Accessories are always kept in stock.

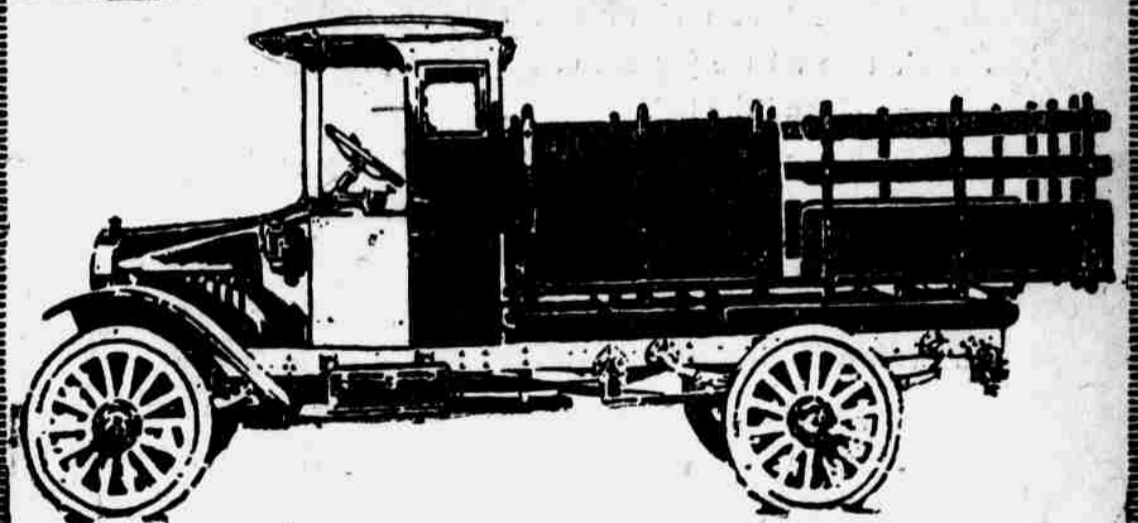
- NATIONAL AUTO SCHOOL,
2814 North 20th St.—Phone Webster 5943.
- TROUP AUTO SUPPLY CO.,
1921 Farnam St.—Phone Doug. 5230.
- THE NOVELTY REPAIR CO.,
4809 South 24th St.—Phone South 1404.
- BLACKSTONE GARAGE CO.,
3814-16 Farnam St.—Phone Harney 800.
- HOLMES-ADKINS CO.,
4911-15 South 24th St.—Phone South 420.

- CHAS. W. WALKER GARAGE CO.
Fontenelle Garage—Auditorium Garage,
and C. W. Walker Garage, 36th and Farnam Sts.
- COUNCIL BLUFFS AUTO CO.,
510-518 Pearl St., Council Bluffs—Phone 2691.
- S. & A. TIRE & RUBBER CO.,
2522 Farnam St.—Phone Doug. 3854.
- JONES-HANSEN-CADILLAC CO.,
Farnam and 26th—Phone Harney 710.
- ORR MOTOR SALES CO.,
Packard Show Room.

GOODYEAR

AKRON

BETHLEHEM MOTOR TRUCKS



From the Blue Print to the Finished Truck

BETHLEHEM
Federal - Goodyear
MOTOR TRUCKS
Dependable Delivery

Dependability and endurance are designed into the Bethlehem Truck and built in with every factory operation. From the Blue Print to the finished truck the entire Bethlehem organization has concentrated on one goal—regardless of cost—the best Bethlehem quality at Bethlehem prices can be found only in Bethlehem Trucks. Send your engineer to the Bethlehem dealer and ask him to conduct a Bethlehem road test.—Then decide.

\$1295

1 1/2 Ton Chassis

BETHLEHEM DUMP TRUCKS

F. O. B. ALLENTOWN PA.

Write for Catalogue.

\$1915

2 1/2 Ton Chassis

BETHLEHEM TRACTORS

J. T. STEWART MOTOR CO.,
2048 Farnam St., Omaha, Neb.
Distributors Nebraska, Western Iowa, South Dakota.