

BURGESS-NASH COMPANY

"EVERYBODY'S STORE"

STORE NEWS FOR SATURDAY

Ask Mr. Foster

About Automobile Tours, Summer Resorts, Trains and Hotel Accommodations. There is no charge.—Main floor balcony.

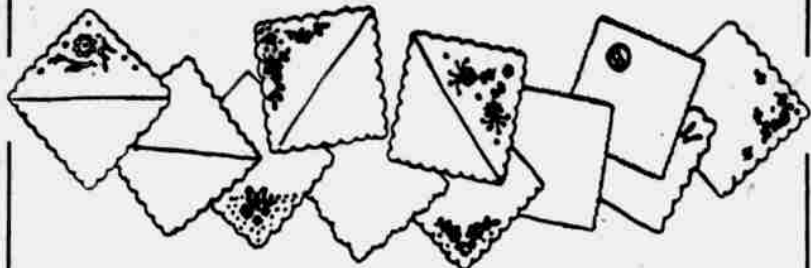
Store Hours

are 8:30 a. m. to 6 p. m. every day. Get the habit of shopping early in the day. It's saving daylight.

Friday, May 10, 1918

Phone D. 137

Semi-Annual May Sale of Women's Handker'fs at 15c



WHEN you take into consideration the conditions on linen and cotton cloths, we offer you in this sale the biggest values of any preceding event.

The assortment includes real Irish linen, linen and shamrock lawns and fine Swiss!

Women's real Irish linen handkerchiefs with hand embroidered initials in white and colors.

Women's fine sheer linen, French hem, hand embroidered corners, white only.

Women's linen lawn handkerchiefs with solid colors and colored edges; also hand embroidered corners.

Women's silk crepe handkerchiefs in colors and hand embroidered, etc.

All in one big offering at 15c each.

Burgess-Nash Co.—Main Floor

Choice
15c

Send Flowers to Your Best Friend Sunday, May 12th---Mother's Day

MOTHER! What a fine upstanding race we'd be were we half the men they think we are.

Since time began your mother's love has followed your children down to the lowest depths with an unflinching faith that they'd rise again—and when they do your dear heart almost burst with joy and pride.

Now in these days of strife when this great nation pours its youth for Liberty it is you who give the most—with tears, perhaps, but uncomplaining.

You alone know that the pangs of anxiety are infinitely greater than the scars of battle.

Send her flowers and wear one in your buttonhole in honor of her whose devotion has never failed, nor patriotism faltered.

Burgess-Nash Co. Flower Shop—Main Floor

Special!

Women's Pure Thread Silk Hose Featured Saturday at \$1.00 pair

REALLY sensational value—the odd lots and discounted numbers of women's pure thread silk hose, fashioned and seamless, plain and fancy. Very special Saturday at \$1.00 pair.

Children's Silk Lisle Hose, 35c to 50c.

An excellent quality in black, white and tan, sizes 6 to 9½ with a price range of 35c to 50c according to size.

Burgess-Nash Co.—Main Floor

Practically Our Entire Stock of Smartly

TAILORED SUITS

Are Included in This Clearaway at the Greatly Reduced Price of

\$29.75



Too much can not be said about the real value importance of this suit clearaway for Saturday. Like everything else we do, we have not gone at it in a half-hearted way, but have made extreme reductions on the prices in order to effect an immediate and absolute clearaway.

Every suit represents the season's very latest and smartest styles—including those individual and distinctive features so characteristic in Burgess-Nash ready-to-wear apparel.

The materials are the most desired and the colorings are the most favored. We recommend this as the most important suit offering of the entire season.

Two Other Very Important Groups of Suits Have Been Reduced to \$19.75 and \$45.00 Respectively

Burgess-Nash Co.—Second Floor

The Banded Hat Has the Call and We Feature Two Special Groups for Saturday at \$3.95 and \$5.00



EVERY new shape—every wanted color and every desirable braid is represented in this very special offering for Saturday.

There is no head dress that is more becoming than a neatly banded hat, especially when worn with a draped veil.

Some are made of pineapple straws, others of plain leaire, and there's no doubt but the very shape and style you desire most for present wear are here, and at a remarkably special price.

We are also showing a beautiful line of white hats.

Burgess-Nash Co.—Second Floor

Dr. Phillip's Florida Brand GRAPE FRUIT



We will place on sale Saturday on the fourth floor a limited quantity of the famous Dr. Phillip's Florida Brand Grape fruit at 5c each.

5c

No phone orders and no deliveries accepted. Burgess-Nash Co.—Fourth Floor

A Great Economy Sale of Writing Papers and Accessories

THE prices we quote are in most instances less than present day wholesale cost and are for one day only (Saturday.) Take advantage of these wonderful values and secure a season's supply.

Writing Tablets at 5c Each

Good quality paper. Various styles, rules and unruled. Sale priced dozen, 42c, 6 for 25c or each, 5c.

Carter's or Sanford's Ink, 5c.

In large bottles, Saturday only, dozen 50c, bottle, 5c.

Loose Leaf Memorandum Books, 8c.

Pocket size, our price is less than wholesale; dozen, 85c; 6 for 45c; each, 8c.

Lead Pencils at 25c Dozen.

For the home, office and school, high polish, round or hexagon with erasers. Dozen, 25c.

Imported Steel Falcon Pens, 5c. Dozen

Gross box, 50c.

Writing Tablets at 10c Each.

High-grade linen papers, assorted styles and sizes. Dozen, \$1.00; each, 10c.

Lead Pencils at 12c Dozen.

Cedar with rubber tips. Saturday only, dozen, 12c.

Fountain Pen Ink, 9c.

Carter's large bottle. Saturday only, bottle, 9c.

Le Page's glue in bottles, 3 bottles, 25c, each bottle, 10c.

Clearance odd lots of box papers, soiled and broken in handling (contents in perfect shape) also odd lots of initial papers—Wonderful values, Saturday only, 5c and 10c box.

Kara Linen writing paper in pound boxes, letter size, white only. Saturday only, pound, 35c.

Kara Linen envelopes to match, package. Saturday only, 15c.

Burgess-Nash Co.—Main Floor

Featuring the New Handbags Saturday Specially Priced at \$3.95

SELECT your new handbag from this assortment with a choice of four new styles in leather and silk. Two of the styles are the new "Service Bag" type at \$3.95

New Strap Bags at \$2.50

Real Seal, vachette and long grain leathers, beautifully made, good wearing leathers at \$2.50

Strap Purses at \$1.00

Real Seal, lambekin and long grain leathers, several styles for selection, special at \$1.00

New Strap Bags, \$1.95

Black or colored vachette, morocco grain and fancy lambekin, with either top or back strap handle. Special at \$1.95

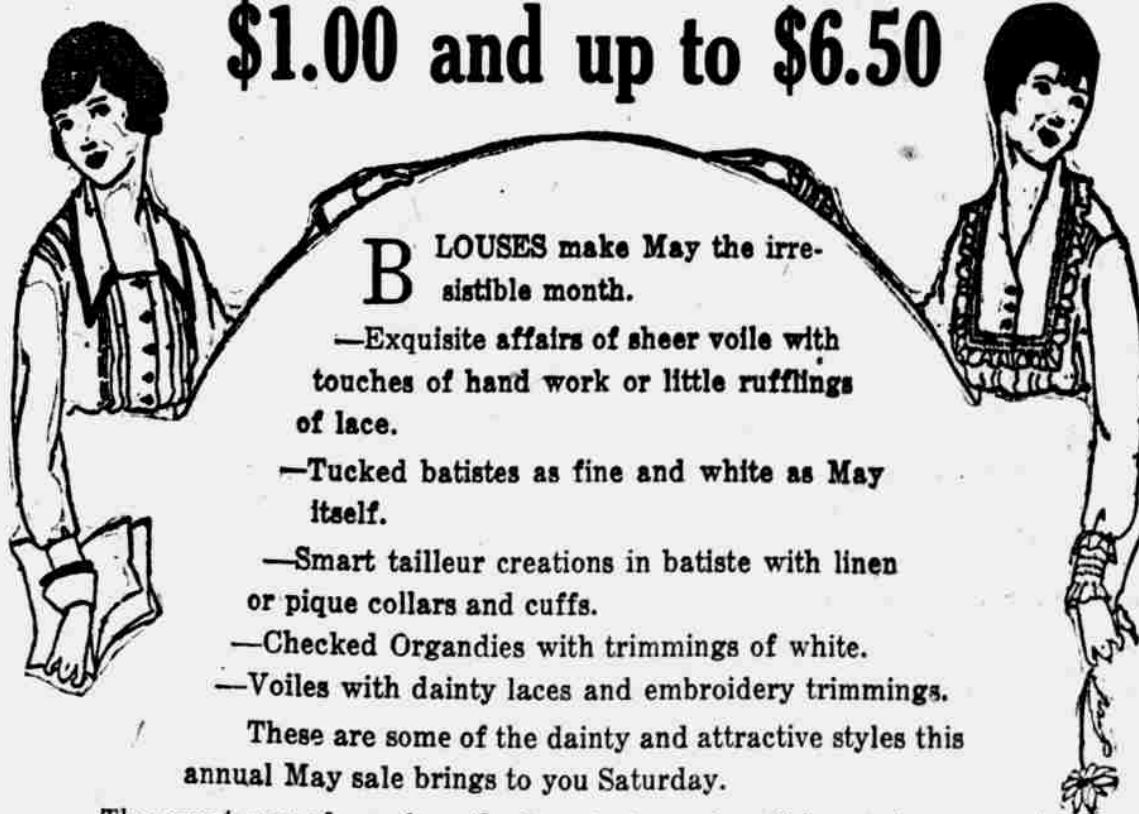
Burgess-Nash Co.—Main Floor

Our Annual May Sale of

BLOUSES

Brings You Values that are Most Uncommon at

\$1.00 and up to \$6.50



BLOUSES make May the irresistible month.

—Exquisite affairs of sheer voile with touches of hand work or little ruffings of lace.

—Tucked batistes as fine and white as May itself.

—Smart tailleur creations in batiste with linen or pique collars and cuffs.

—Checked Organdies with trimmings of white.

—Voiles with dainty laces and embroidery trimmings.

These are some of the dainty and attractive styles this annual May sale brings to you Saturday.

The event was planned on the broadest merchandising scale—presenting bigger variety of selection and better values than it's ever before been our privilege to offer at the same price.

An opportune offering—at a time when you are anticipating your season's supply, offering inexpensive and exceedingly pretty models, so wide in variety that there is certain to be a number of dainty styles at every price that will appeal to you. This is your opportunity, come Saturday and profit by it.

Burgess-Nash Co.—Second Floor

Saturday is Children's Day in Our Shoe Section

Featuring Splendid Values.

Reduced for Saturday only the best grades made, good wearing, good fitting styles.



Children's White Pumps.

White duck pump hand turn soles, novelty three bar strap, very pretty, reduced to sizes 8½ to 11 for \$1.65, 11½ to 2 for \$1.95.

Misses' Low Shoes, \$2.45

Misses' patent kid, hand turn soles, low heels. Novelty three bar strap, sizes 11½ to 2 for \$2.45

Girls Sandals at \$3.35

Growing girls Roman sandals and three strap pumps. Sizes 2½ to 6, reduced to \$3.35

Women's New Pumps at \$5.00

Including:

White duck with turn soles and covered heels.
White duck oxfords, turn soles, covered heels.
Black kid skin, turn soles leather Louis heels.
Dull kid skin, turn soles, covered Louis heels.
Patent kid skin, turn soles, covered Louis heels.
Black kid, light welt soles, leather Louis heels.
Six new styles, choice, \$5.00.

Burgess-Nash Co.—Second Floor

Clearaway of Summer Bonnets and Hats for the Little Tots at 25c, 45c and 95c

THERE are many different styles and materials, exquisitely trimmed with dainty laces, ribbons and flowers.

They have all become more or less soiled and mussed from handling, and we have reduced the prices for quick disposal.

Burgess-Nash Co.—Second Floor

It Will be Real Economy to Own One of These Refrigerators

THIS is refrigerator time and we feature the automatic eight-wall construction, mineral wool insulated, outside case made of selected lumber with three coats of varnish, all food chambers are white enameled.

Electric welded tinned wire shelves. Automatic taps. Solid brass hinges and locks, heavily nickel plated. Metal ice rack. Economical ice consumption. All are three-door side-icing type.

60-lb. ice capacity, \$37.50.
75-lb. ice capacity, \$39.50.
100-lb. ice capacity, \$45.00.

WITH BUILT-IN WATER COOLER.
60-lb. ice capacity, \$41.00.
75-lb. ice capacity, \$45.00.
100-lb. ice capacity, \$49.50.

ILLINOIS REFRIGERATORS
Are well proportioned and of fine wall construction. The outside case is made of ash lumber which has a pretty grain and golden oak finish, shelves are heavily tinned wire.

Three-door side-icing type, all have white enameled food chambers—
Ice capacity, 60 lbs. at \$19.50
Ice capacity, 75 lbs. at \$23.50
Ice capacity, 90 lbs. at \$29.50
Ice capacity, 100 lbs. at \$35.00

ILLINOIS TOP-ICING TYPE.
45-lb. ice capacity, galvanized food chambers, \$11.95.
45-lb. ice capacity, white enameled food chambers, \$14.95
75-lb. ice capacity, white enameled food chambers, \$19.50

LAWN MOWERS
"Nivot" lawn mower, three blade, 8-inch wheel. 14-inch size, \$4.50.

Country club lawn mower, 10-inch wheel, 4 blades, a strong and light running mower. 14-inch size, \$7.95

Ball Bearing Lawn Mowers
10-inch wheels, fully guaranteed
14-inch size, \$9.95
16-inch size, \$10.95

Garden Hose.
Garden hose, 4 ply, 50-foot length with coupling, fully guaranteed.
¾-inch size, \$4.45
¾-inch size, \$5.50
Molded garden hose, non-kink, fully guaranteed.
¾-inch size, foot, 14c.

Flower Boxes.
Wood flower boxes—made of heavy lumber, painted green
30-inch size, 59c.
36-inch size, 69c.

Burgess-Nash Co.—Down Stairs Store