

TREASURERS TO DEFY LAW; WIPE OUT POLL TAXES

But It's Only Those Assessed Against Boys in Service and They Dare Courts to Act.

Poll taxes assessed against soldiers in the service will be wiped off the books of most counties in Nebraska and not collected if the sentiment expressed at the convention of the County Treasurers' association of Nebraska, in session at the court house, is put into action.

Irl D. Tolen of Ord, president of the association, said he does not intend to collect these poll taxes from boys who have gone into the army, but intends to issue distress warrants and then drop them into the wastebasket, just to clear the records.

F. B. Frame of Fullerton, secretary of the association, said his county had sent the boys in the army a \$2 Christmas present each and a poll tax receipt besides. "I shall never be afraid of my record on that," he said, "whether the action is strictly legal or not. I would face a jury and go to jail for 1,000 years rather than live in a community where people would object to cancelling this poll tax for the boys at the front."

Endres Seeks Ruling. M. L. Endres, county treasurer of Douglas county, said he wished some official ruling could be had on the point, so that treasurers all over the state might know how to proceed legally in this matter.

William Albers of Lincoln was elected president for the coming year. M. L. Endres of Omaha was made vice president, Mike Tritsch of Plattsmouth treasurer and Guy E. Thornton of Neligh secretary.

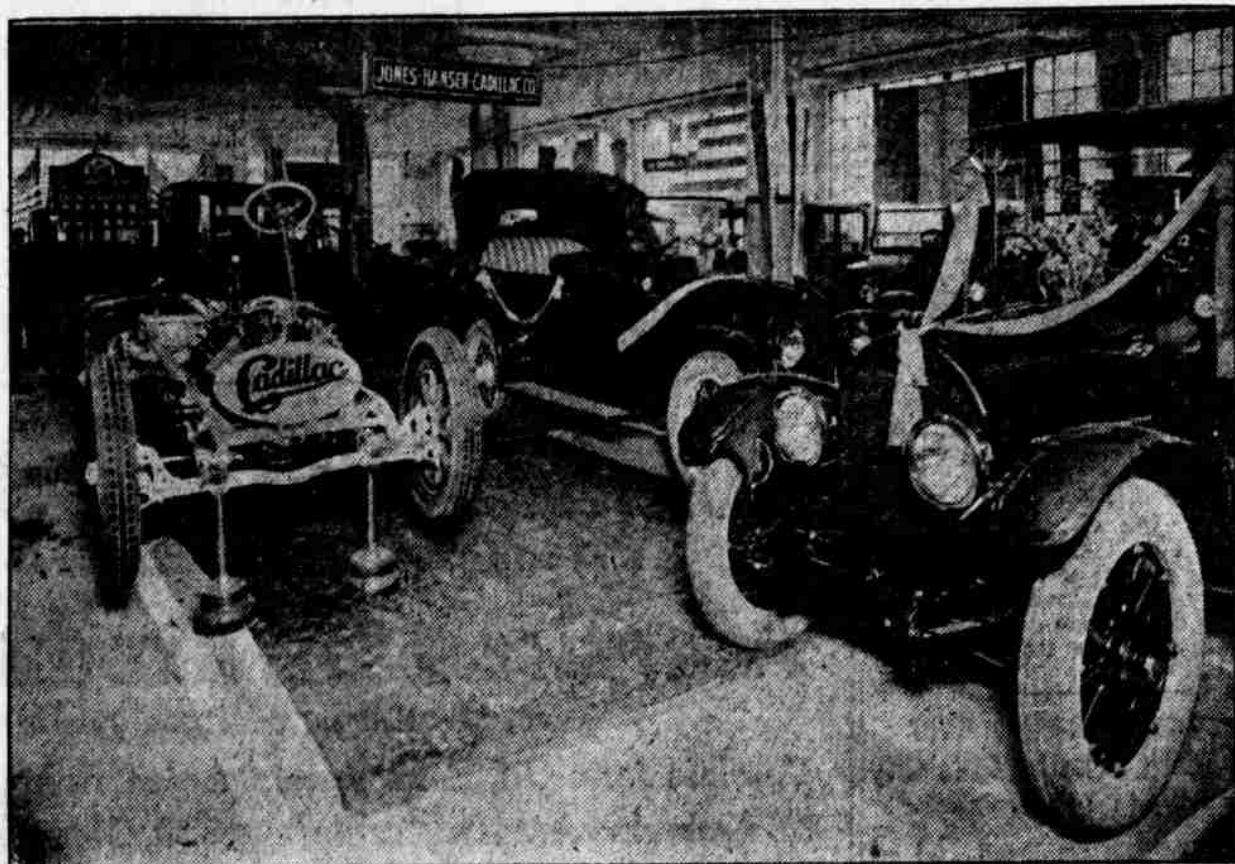
Mabel E. Johnson, treasurer of Morrill county, and Myrtle Lancaster, treasurer of Cheyenne county, addressed the convention briefly in the morning. The delegates were the guests of the Omaha Automobile association at the auto show during the afternoon. Those who remain tonight will be guests at a theater party given by the bond agencies of Omaha.

Hays in Conference With Republican Leaders

Washington, Feb. 27.—Chairman Hays of the republican national committee began a series of conferences here today with party leaders at national headquarters after a formal call at the capitol on Senator Gallinger of New Hampshire, republican leader in the senate, and on Representative Woods of Iowa, chairman of the republican congressional campaign committee. Chairman Hays will meet Senator Johnson of California and other progressives.

After the conference Representative Woods said he was in complete accord with Mr. Hays' harmony program and would co-operate with the national committee in the republican congressional campaign.

CADILLAC BOOTH PROVES POPULAR



This very attractive Cadillac display is being admired by visitors at the auto show. Exclamations are being constantly heard "Isn't that beautiful?" or "Daddy, isn't this the sweetest Victoria?" The manager of the show, Clarke Powell, complimented Manager Hansen on his display.

"When I was the dealer in Omaha for the Cadillac in 1902 I never dreamed that Cadillac cars would be made so perfect and so exquisite, and in such variety as the now are," said Mr. Powell. "The last year I had the Cadillac agency I sold about 30 single cylinders and thereby became

one of the leading dealers in the United States." Mr. Hansen returned the remark by saying that he had sold about 30 since the show opened. Mr. Powell walked away with the remark: "Wonderful, simply wonderful, everybody is buying cars nowadays and all the exhibitors are doing some business."

Oakland Owners Get High Mileage Out of Gasoline

"In this prosperous nation, once extravagant by habit but now economical through necessity and patriotism, there are upwards of 100,000 automobile owners who merit the title of gasoline conservators," said W. H. Head, manager of the Oakland Motor Car company branch. "Their cars bear the Oakland nameplate on the radiator and the gasoline that these economical 'sensible sixes' save not only makes possible the operation of other makes of less thrifty automobiles that do not give as many miles per gallon, but releases more than 1,000,000 gallons of fuel annually for pressing war needs." Statistics, compiled by experts at the request of the Society of Automotive Engineers, show that the average American automobile travels 12 miles on a gallon of fuel. The lowest gasoline mileage for an Oakland car that has been reported to us is 18 miles, while hundreds of 'sensible six' owners have obtained as high as 25 miles to the gallon.

Doctor Bound Over for Alleged Bad Check Deal

Dr. Leighton Bonner, charged with passing a worthless check for \$200 on T. L. Combs & Co., was bound over to district court under \$1,500 bonds. Bonner was brought back from Salt Lake City Tuesday night by Omaha police.

FUEL ECONOMY IS FEATURE OF AUBURN

Engineers Meet Demand for High Mileage and Sufficient Power Despite Poor Grades of Gasoline.

"With the increasing price of gasoline, motor car buyers have begun to inquire more closely into the fuel economy of the cars they buy," says W. C. Raapke of the Raapke Motor Car company, Omaha dealers of the Auburn six.

"At the same time buyers continue to demand plenty of power, so that the manufacturer is between two fires, the demand for high mileage from every gallon of gasoline and the demand for power. One of the reasons for the marked success of the Auburn six during the last year or two is the fact that we have managed to meet both demands.

"Few popularly priced cars are as amply powered as the Auburn sixes. In the light six models there is a 43-horsepower engine, and in the seven-passenger models we are using a 55-horsepower engine, yet both models have made an enviable record for fuel economy. In the rural territory

where there is not a gasoline station on every corner, motor car buyers have a double incentive to seek economy.

"Aside from the actual money saving, there is the matter of convenience, but all over the country we find a disposition among motor car owners to be economical of gasoline as a matter of principle. People to whom a few gallons of gasoline more or less is a matter of indifference, feel nevertheless that they have a moral obligation to refrain from waste. This spirit is commendable at any time, but doubly so at present, and we are glad that Auburn sixes are cars that are truly economical."

Guaranty Truck Unit is Claiming Show Attention

Among the several truck units claiming attention of the show visitors is the guaranty internal gear drive, attachable to many of the leading popular motor car makes. This truck unit is sold and distributed by the Rother Motor and Supply company of Council Bluffs, Ia., the manufacturers' representatives, and during the Omaha show have leased temporary quarters in the Paxton Hotel annex, 320 South Fourteenth street, at which place they will demonstrate. This firm also handles Rogers Bros.' company line of all-steel trailers.

Looking for work? Turn to the Help Wanted Columns now. You will find hundreds of positions listed there.

SEVERE TEST FOR BIG DENBY TRUCK

Travels Nearly 1,000 Miles Overland to Be Delivered to Purchaser in New York City.

The Denby five-ton truck being displayed at the auto show by the Card-Adams Motor company was given one of the hardest tests to which a heavy truck was ever subjected.

The first of the regular production was taken overland to New York to demonstrate what this heavy truck could do on all kinds of country roads. Carrying full load, it was driven to Pittsburgh, down through the worst mountains of Pennsylvania to Washington, and then up to New York via Philadelphia.

The Hibberton avenue test hill of

21 per cent grade, the Turtle Creek hill and the four-mile climb of Laurel mountain were negotiated without once using low gear, and without once boiling the cooling water. From Youngstown, O., nearly to Washington, the road is a succession of hills that are a continuous test of power, cooling and brakes.

On its arrival in New York the truck was turned over to the purchaser, Arbuckle Brothers, and put in the service of the Great Atlantic and Pacific Tea company.

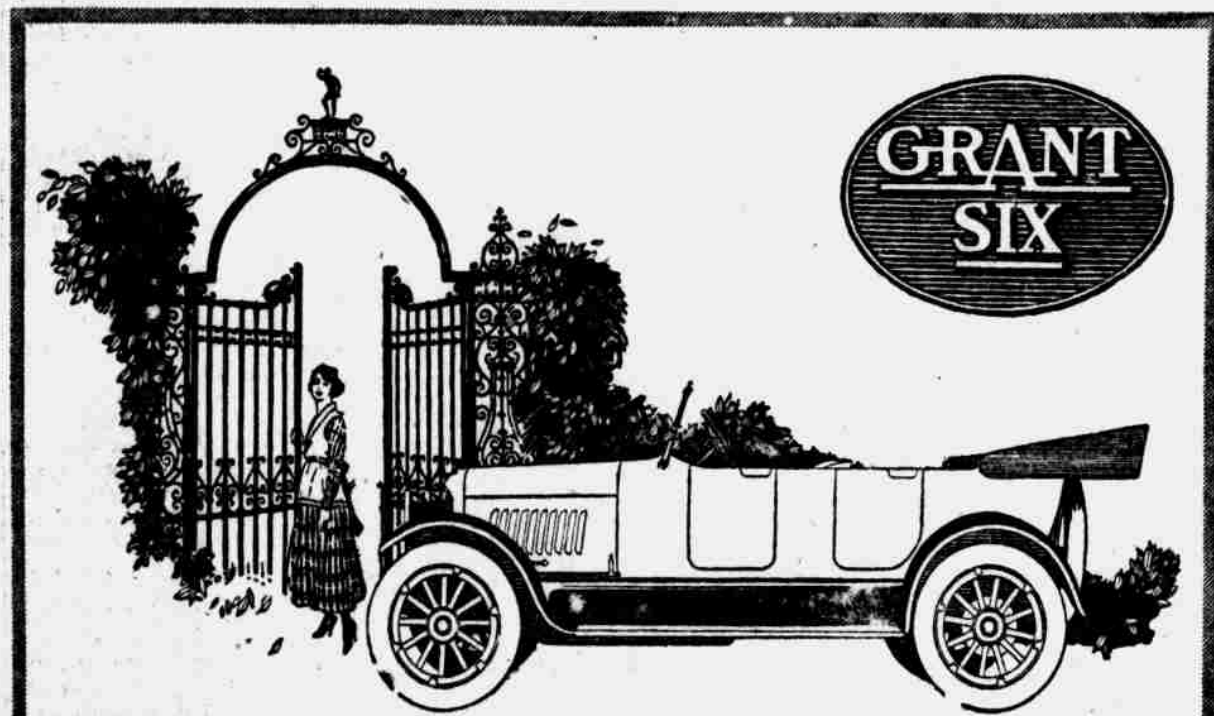
This trip not only proved the ability of this latest Denby model, but it was a striking demonstration of the practicability of a properly built heavy duty truck in long distance hauling over all kinds of roads. It covered nearly 1,000 miles over roads picked for their difficulties. It climbed hills nationally noted for their ability to bring out everything a truck possesses. Twice it went around lighter trucks, hopelessly "stuck," and pulled them out. At the end of the trip it was in perfect condition, ready to be put in regular service.

Germans and Austrians Discharged From Army

Ayer, Mass., Feb. 27.—Ninety-eight Germans and Austrians have been discharged from the national army at Camp Devens as the result of orders from the War department to eliminate all enemy aliens from cantonments throughout the country. Some of the men had risen to the non-commissioned ranks and several had taken out their first citizenship papers.

Newburgh Ship Yard Saved By Discovery of Bomb

Newburgh, N. Y., Feb. 27.—An attempt to blow up machinery in the plant of the Newburgh Shipyard company here today was frustrated, but only after a guard had picked up a bomb and hurled it out of danger. It exploded and did some damage, but not enough to delay work at the plant.



Exceptional Beauty

POWER, speed, comfort and high economy the Grant Six has always had—but to all these the new model adds a degree of beauty never before attained in a popularly priced car.

In giving the Grant Six its new and pleasing lines and in refining the car mechanically, Grant designers and engineers have produced what is unquestionably the finest car of its size and price ever built.

The three features for which the Grant Six has become nationally known—overhead valve engine, cantilever rear springs, full-floating rear axle—will appeal to every motor-wise purchaser.

Owners average 20 miles to a gallon of gasoline and 900 miles to a gallon of oil.

The price, \$1055, f.o.b. Cleveland, makes this new Grant Six the car which the spirit of the times demands.

The Grant Six Offers a Real Selling Proposition See Us at the Show.

LININGER IMPLEMENT CO.

Sixth and Pacific Streets.

Phone Douglas 109.

GRANT MOTOR CAR CORPORATION—CLEVELAND

Two Sizes Two Basic Prices

Mitchell Sixes

19 Body Styles New Attractions

Mark Our \$1250 Six

120-Inch Wheelbase—A Powerful Motor

The Summit Value in the Fine-Car Field Today

HERE is one amazing example of Mitchell factory efficiency.

A result of building complete cars—chassis and bodies—under up-to-date factory methods.

A New-Time Car

Among countless people, in the past few years, ideas have changed about quality cars.

Once extra size and over-power were courted. In these ways a fine car seemed to show its supremacy. Impressiveness counted even more than utility.

Then came the Great War, which soon multiplied steel prices. The cost of fuel doubled. Motor car prices soared.

Later, with our entrance into war, economy came into fashion. Moderation is in vogue now—extravagance is taboo. And Mitchell, to meet that new idea, brought out this matchless Light Six.

No Retrogression

Mark that we did not go back to Fours to meet these new-day ideas. This is the day of the Six.

We made no sacrifice of needed room or comfort. The

Also an evidence of how we conform to the spirit of the times.

There is nothing like it, nothing approaching it, among cars of like size, class and power.

No Waste Here

What we have done is to merely eliminate waste. The ablest efficiency experts built and equipped this plant. They have worked here for years to minimize the cost of every Mitchell part.

Resident workmen—men who have homes here—have been trained in efficiency methods. Production has been doubled without addition to the plant. And now famous craftsmen build our bodies here under these new-day methods. That is the secret of these incomparable values.

19 New-Style Bodies

The Mitchell now comes in two sizes and in 19 new-style bodies. Any fine-car style that's wanted can be found in the Mitchell line.

Come see these new creations at our showroom. It will bring you a profound respect for the Mitchell idea in car building.

new Mitchell Light Six has a 120-inch wheelbase—a unique length in this class.

We lessened our standards not an iota. Here is the same Mitchell over-strength. Here are our shock-absorbing springs, our reversible headlights, our power tire pump, our dashboard engine primer, and most of our other extras.

We even added 25 per cent to the cost of beauty and luxury. That out of savings in our new body plant.

Simply through enormous production in an ideal plant we produced this wondrous Light Six to sell at \$1250 at factory.

<p>\$1250</p> <p>Mitchell D-46—a 2 or 3-passenger Six on similar lines, with 120-inch wheelbase and a 44-horsepower motor.</p> <p>Club Roadster, \$1250 Sedan, \$1250 Coupe, \$1250</p> <p>All prices f. o. b. Racine, and subject to change without notice.</p>	<p>\$1525</p> <p>Mitchell C-48—a roomy 4-passenger Six, with 127-inch wheelbase and a highly developed 48-horsepower motor.</p> <p>Three-passenger Roadster, \$1500 Club Roadster, \$1500 Sedan, \$1525 Cabriolet, \$1500 Coupe, \$1525 Club Sedan, \$1525 Four-Passenger Survey, \$1625 Also Town Car and Limousine</p>
---	---

J. T. STEWART MOTOR CO.

DISTRIBUTORS

2048-52 Farnam Street.

Omaha, Nebraska.

MAIN FLOOR EXHIBIT AT AUTO SHOW



Established 1908



You Can Safely Buy This Automobile Upon Its Good Looks

After you have investigated the Empire specifications, you will agree that it must be an extraordinary automobile.

The Empire Automobile Company searched the markets to bring together the best units that can possibly be built into a motor car in this price class. This is your guarantee that here is the car that you can safely buy upon its handsome appearance. The design, the materials and the workmanship have been taken care of by the Empire Company.

Four and Sixes from \$1,125 to \$1,345 (f. o. b. Indianapolis)

See the four beautiful models of the Empire line in the corner room of the W. O. W. building, Omaha.

M. L. Blair Motor Co.

Nebraska

Factory Distributors Southwestern Iowa

Wyoming

SPECIAL PROPOSITION TO DEALERS