



HEROIC RESCUES MARK WRECK OF LINER FLORIZEL

Best Traditions of Sea Maintained of Work of Life Saving Crews in Grave Yard of North Atlantic.

St. Johns, Newfoundland, Feb. 26.—Graphic stories of rescues from the wrecked liner Florizel and further details of Sunday's disaster were related today by survivors who are recovering here from the terrible hardships they endured before they were saved by small boats from the Newfoundland steamer Prospero.

When Captain Martin of the Florizel reached here he was in such a state of collapse that he could make no statement.

Members of the crew said the mistake in reckoning which brought the Florizel head on to the coast 20 miles north of Cape Race when all hands thought it was well out to sea as it turned westward for Halifax was due to running without the patent log.

The heavy snow, forming an icy crust, or what the natives term "slob," as it struck the sea, made it impossible to use the log to register the steamer's progress against the storm. The steamer therefore was navigated by dead reckoning and, as frequently happens in this region of shifting currents and baffling winds, the calculations were off and the Florizel went the way of other brave ships in this "graveyard of the north Atlantic."

Drowned Like Rats.
Many of the passengers were swept to death in less than 15 minutes after the steamer struck the rocks. Dozens of passengers were trapped below decks by cascading seas which filled the saloon.

Directed by officers and crew, who never for a moment forgot the best traditions of the sea in looking after their passengers, those who escaped from the saloon sought safety on the bridge deck.

Two hours later a giant wall of water thundered upon them, wrenching the structure bodily from its base and engulfing 30 men and women. A short while later 20 persons clinging desperately to the roof of the smoking room met a similar fate.

The stout construction of the wireless house saved most of the survivors. Thirty-two persons piled into the wireless room, packed so closely they could neither sit nor lie down. They were without food, water or adequate clothing. They were often engulfed by boarding seas. Some of them were badly injured by flying timbers and died as they stood.

The pitiful manner in which members of families died one by one was graphically described by survivors.

Whole Family Perishes.
Three-year-old Betsy Munn, daughter of John S. Munn, managing director of the line, was swept overboard before his eyes. The child's nurse had been drowned in her berth. Munn was swept to his death with

the group on the bridge deck. Fred Butler, an architect of this city, who was going to Florida with his wife, was supporting her against the rush of water when one comber towering above all the others snatched her from his arms. He was carried along helplessly in the torrent, bringing up in a tangle of wreckage. Bruised and enmeshed, he was unable to extricate himself and perished then.

Unstinted praise was given to blue-jackets of the Newfoundland naval reserve, who made up a large part of the volunteer rescue crews. One of them sacrificed his life, the only one of the rescue fleet to perish.

Commander McDermott, senior naval officer, in charge of the reservists, saluted his men when they returned and said that only sons of Newfoundland, born and bred on this coast, could have accomplished such a superhuman task.

EXHAUST ECHOES Items of Interest Seen and Heard at Omaha Exposition HEARD AT SHOW

The Raapke Motor Car company has on display one of the chic cars at the show. It is an Auburn combined club roadster and sport model, finished in a beautiful ash gray. On the curb side only is a rear door that will allow passengers to enter or leave the car without disturbing those in the front seat. The rear seat can be entered from the front if it is desired.

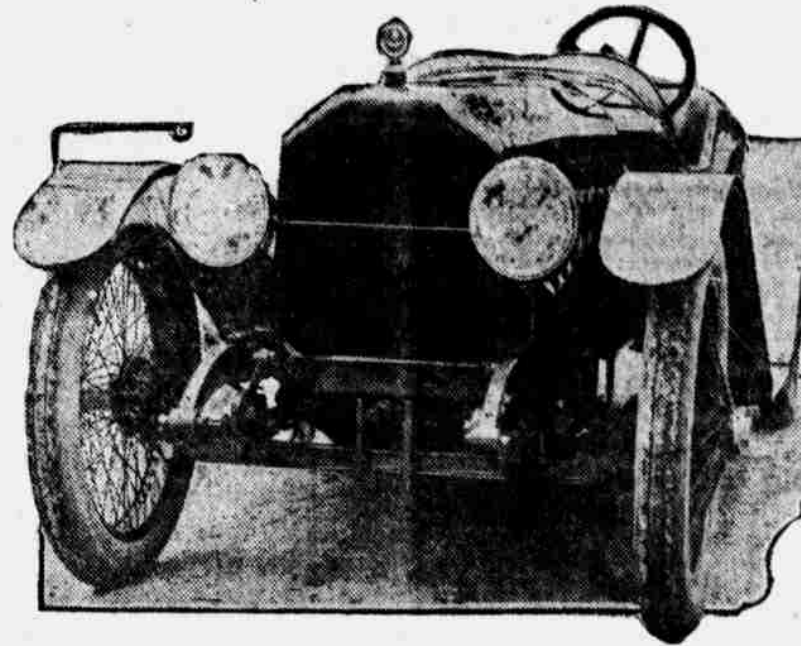
The car is light in weight, notwithstanding it has a 120-inch wheel base. It is extremely fast with a 45 horse power motor and 32-inch wheels. The robe compartment in the rear opens from the inside of the car, insuring the contents always free from dust.

Popular With Ladies.
"Isn't that beautiful?" Numerous "Ohs" and "Ahs" and similar expressions are constantly heard from women near the exhibit of the Jones-Hansen company. The display space is beautifully decorated with flowers that set off the dainty colors and beautiful upholstery of the cars.

In this exhibit for the first time is shown the new Cadillac seven-passenger brougham. It was especially upholstered and prepared to show at the Chicago auto show, but the factory was unable to complete it in time. It is a limousine for use where a chauffeur is not desired, the entire car being enclosed. All windows lower, making the car open for summer touring.

Accompanying the brougham and sharing honors with it is a dark maroon touring car with a cape top.

Ready for Any Kind of Brush on Track or Road



This is the new Peerless Eight sport speed roadster, one of which George Reim, Omaha distributor for the Peerless, has on display at the auto show.

Eighty miles an hour is the guarantee which goes with this Peerless. Any prospective purchaser who demands that speed in his machine before purchase will be shown. Eighty

White wheels make the car one to excite the admiration of all. The simplicity of the color design of a robin's egg blue four-passenger Victoria convertible adds to the beauty of the exhibit. A Cadillac chassis, first shown at the New York show, describes the motor power of the car.

Simplicity Makes Hit.
John H. DeJong, manager of the Apperson Motor company, appeared to be the best pleased man at the show. A constant throng surrounded his booth, examining the simplicity of the Apperson motor.

Hosts of friends and acquaintances made during his 11 years in the automobile business in Omaha were constantly rushing up to greet him and admire his display. "It's the simplicity that counts this year," said John. "Our display is attractive because of its simplicity, just as the motor attracts because of its 80 less parts."

Shown Inside and Out.
The Traynor Automobile company has a complete display of open model Cole cars on show. "We anticipate

ster touring car and the Tuxedo roadster. A special motor shows the motive power of the Cole without opening the hood of the cars. In addition to this, all parts making up the motor are on display for examination.

Glad to Reach Omaha.
J. C. Helbert, special representative of the National has visited every important auto show held this season. The Omaha show makes the ninth he has visited beginning in New York. Speaking of the show he said:

"It sure seems like getting home for me to visit Omaha. I have been here with exhibits for the past seven years and always enjoy returning. This is the banner show of the season and I sincerely hope it continues as successfully as it has started.

"My one regret is that our two-passenger 12-cylinder speedster has not arrived. It will be the hit of the show when it reaches Omaha. It is now on the way being shipped by express and I expect it any day. To show what we think of this car we have guaranteed that it will travel 80 miles an hour.

"I thought Des Moines had established a record for artistic decorations until I reached here. Nothing can compare with the patriotic decorations at this show and I can think of no possible way in which they could be improved."

The Noyes-Killy Motor company has one of the most artistically arranged exhibits at the show. It has secured one of the choicest booths, near the entrance to the annex, where it attractively displays its Saxon and King cars. Real flowers are much in evidence for decorative purposes.

One of the beauties in this exhibit is a King Foresome, nickel trimmed, and one of the leaders in the 1918 line. Accompanying it in the King line is the 1918 standard touring car that is proving extremely popular.

The low built Saxon speedster is in a class by itself in the speedster line. Its racy lines show speed and all that

could be desired in this class of cars. A standard six-cylinder cut out chassis shows the mechanical power of the Saxon cars. A completed standard touring car accompanies it.

The Noyes-Killy company also occupies booths in the truck department where they have a display of King and Sign-I trucks. Sturdiness desired in this line is as marked as the pleasure features of their passenger cars.

G. M. Clark general sales manager of the National Automobile company, will stop off in Omaha Thursday, en route to California. He expects to spend a couple of days visiting at the

automobile show.

J. H. Hansen of the Jones-Hansen Cadillac company has been renewing old acquaintances in the automobile industry since the Omaha show opened. W. E. Westerdale, now assistant sales manager of the Hupp Motor company, who is in attendance at the show, and Mr. Hansen worked together in the past several years ago and had not met since until yesterday.

J. C. Helbert, special factory representative of the National car, is spending his honeymoon attending automobile shows. He was married two months ago. Mrs. Helbert is accompanying him on his western trip.

Car owners are happy—it is not surprising, "Everloc" saves them high priced vulcanizing.



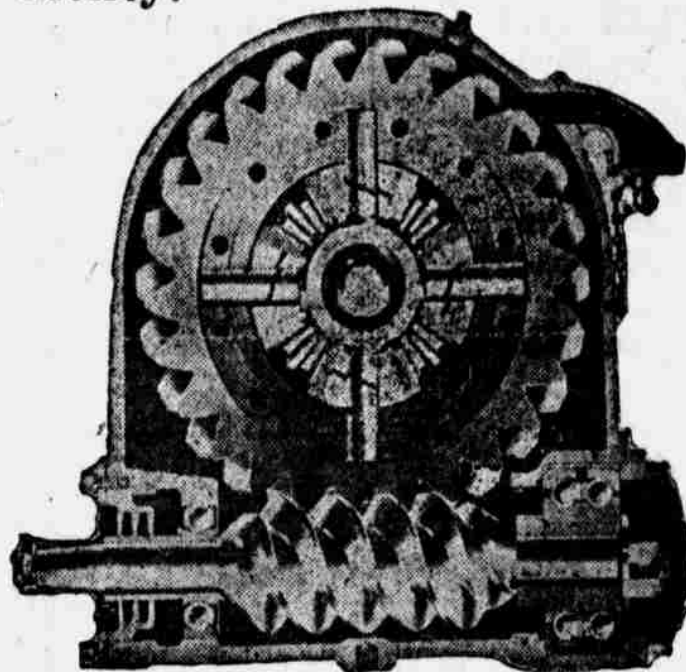
WOOD'S "EVERLOC" TIRE PATCH

They're coming thick and fast—those users of Wood's "Everloc." The tire patch that permanently repairs punctures and blow-outs up to 17 inches in length certainly appeals to motorists. Wood's "Everloc" is the original self-vulcanizing tire patch. It is guaranteed never to leak or creep. Try it on our guarantee. Do away with laborious dangerous heat vulcanizing. Use Wood's Everloc. At your dealers: 50c, \$1.00, \$1.50.

JOS. BRINKHAUS
MANUFACTURER'S DISTRIBUTOR,
116 S. 17th, Omaha. Phone Tyler 3044
Special Garage Size 20x28 inches.

Here is more for your money than you can get anywhere in America

You should sell the D-E Worm Drive Motor Trucks, the very best motor truck that is produced in the United States today for the money.



Showing cross-sectional view of worm and worm wheel and large annular ball bearings.

First--

The enormous increase in demand for motor trucks and for high grade motor trucks at popular prices, such as D-E in particular, offers a wonderful opportunity to establish yourself in the business quickly and reap big profits.

Second--

Because there is no worm drive motor trucks in the United States at the price at which the D-E motor trucks are sold that will compare with them in quality and value. You can prove this absolutely by comparison or specifications of other makes.

Third--

Because you are representing a line in which you may place absolute reliance on prompt delivery, not part of the time, but all the time. There is not a single contract made beyond the 1918 production. We have a carload in today by express, we invite you to call at our store, 2056 Farnam, and inspect the greatest of all worm drive trucks for the money. We want live dealers and we have a good proposition.

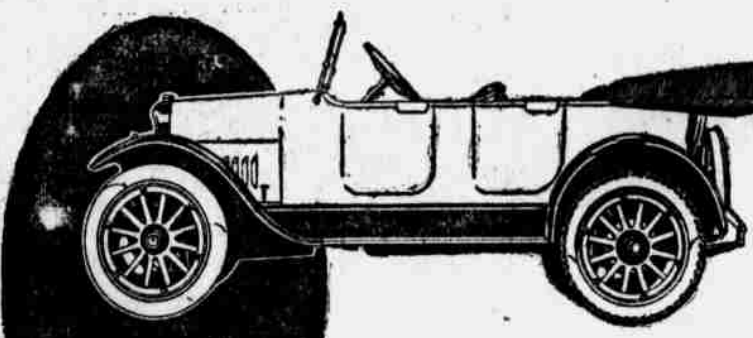
We desire to refer you to a commercial vehicle in the November 1st issue "Buyers' Guide" of gasoline trucks. You will find that in the list of all of them there is none compares with the D-E.

PRICES					
3/4-Ton	-	\$ 950	3-Ton	-	\$2,365
1 1/2-Ton	-	\$1,495	2-Ton	-	\$1,755
(3,500 Pounds Carriage Capacity.)					

We want live dealers to visit us next week and inspect this new truck.

Foshier Brothers & Dutton

Distributors Nebraska and Western Iowa



Allen Motor Cars
\$1095
Lab. Fostoria, Ohio

This car has a really wonderful motor—powerful, quick, and silently smooth. As fine, as serviceable, as handsome an automobile as can be built at a moderate price.

Factory Address:
The Allen Motor Company,
Fostoria, Ohio

Allen UTILITY— The Keynote of these Exhibits

The Allen car provides quick, comfortable and dependable passenger transportation at low expense.

The Defiance Truck performs big haulage tasks economically and on schedule.

Today's greatest test of value lies in utility, whether passenger car or motor truck be under consideration.

At the Show and at our sales rooms we stand ready to demonstrate the high worth of Allen Cars and Defiance Trucks measured from the standard of utility and general reliability.

Defiance
1 1/2 Ton Truck
\$1695
for chassis, Lab. Defiance, O.
Torbensen Internal Gear Drive

The Defiance is a remarkably good truck.

Every unit is of proven value—standard in design—simple and sound.

It will solve your haulage problems and solve them satisfactorily.



Standard Motor Car Co.
2229 Farnam St., Omaha, Neb. Phone Douglas 1705.

DEFIANCE