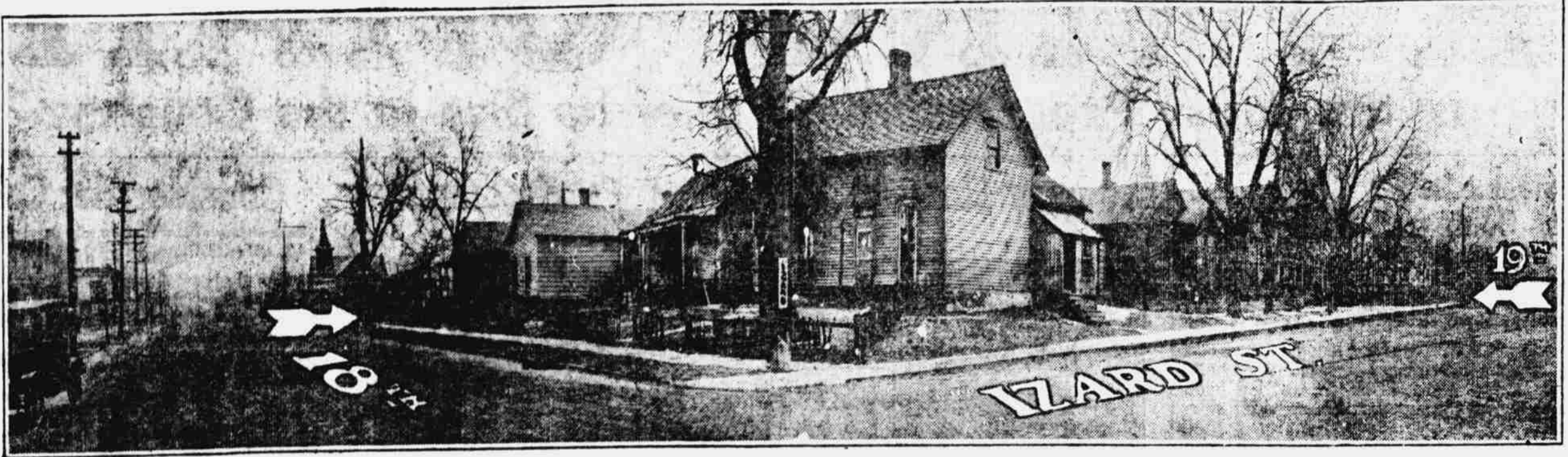


# HERE Is the Ground That the Sprague Tire and Rubber Company Bought



The Sprague Tire & Rubber Company has purchased the ground which has a frontage on IZARD street extending the entire length from 18th street to 19th street. This gives them 278 feet on IZARD street, 142 feet on 18th street and 76 feet on 19th street.

**HERE** is some of the Machinery which the Sprague Tire & Rubber Co. have bought. The total amount purchased up to date is \$126,312

FROM FARRELL FOUNDRY & MACHINE CO., Ansonia, Conn.

#### Heavy Machinery

- 1—24x66-inch, 3-roll rubber callendar, motor driven. This machine weights 42 tons.  
Motor drive reduction gears for above callendar.
- 3—20x22x60-inch mills for grinding rubber. Each one of these mills weighs 10 tons.
- 1—300 horse power motor drive reduction gear for the above mills.
- 2—16x36-inch crackers and washers for washing rubber. Each of these machines weighs 7 tons.
- 1—100 horse power motor drive reduction gear for above crackers and washers.
- 2—21x24x32-inch single geared refiners for refining rubber. These machines weigh 7 tons each.
- 1—150 horse power motor drive reduction gear for above refiners.
- 1—6x12 experimental mill for development purposes.

FROM GENERAL ELECTRIC COMPANY, Schenectady, N. Y.

- 1—250 horse power motor.
- 1—150 horse power motor.
- 1—100 horse power motor.
- 1— 90 horse power motor.

FROM AKRON RUBBER MOULD & MACHINE CO., Akron, O.

Cores and Moulds for building tires, inner tubes, beads, etc.

FROM SOUTHWARK FOUNDRY & MACHINE CO., Philadelphia, Pa.

Hydraulic vulcanizers for curing tires.

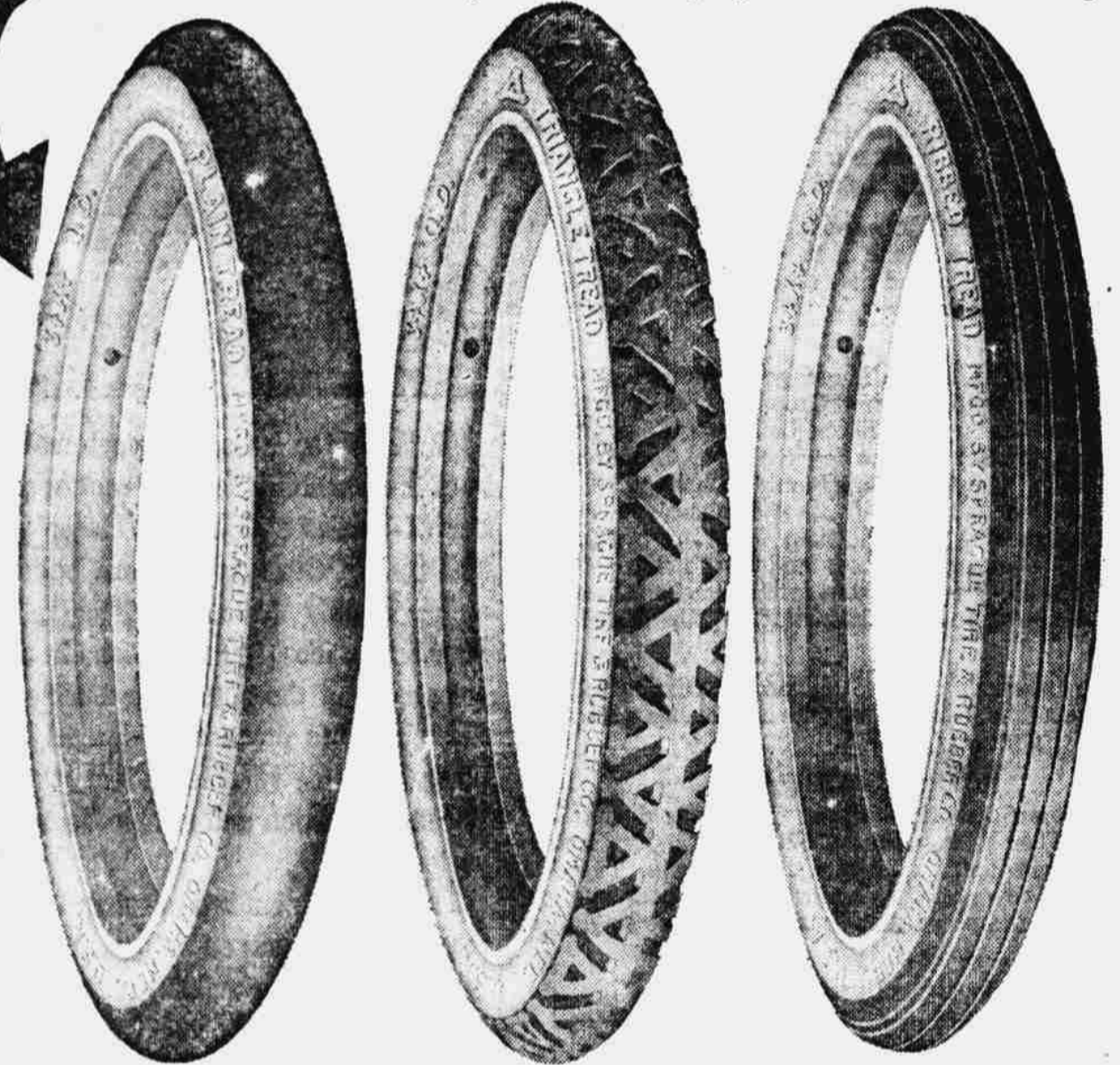
FROM BIGGS BOILER WORKS COMPANY, Akron, O.

- 1—Devulcanizer for reclaiming purposes. This machine weighs 7 tons.
- 1—Tube vulcanizer for curing inner tubes. This machine weighs 3 tons.

FROM BUFFALO FOUNDRY & MACHINE CO., Buffalo, N. Y.

- 1—Vacuum drying outfit. This machine weighs 8 tons.

**HERE** are the tires that will be manufactured in the factory that will be built on the ground that the Sprague Tire & Rubber Co. bought

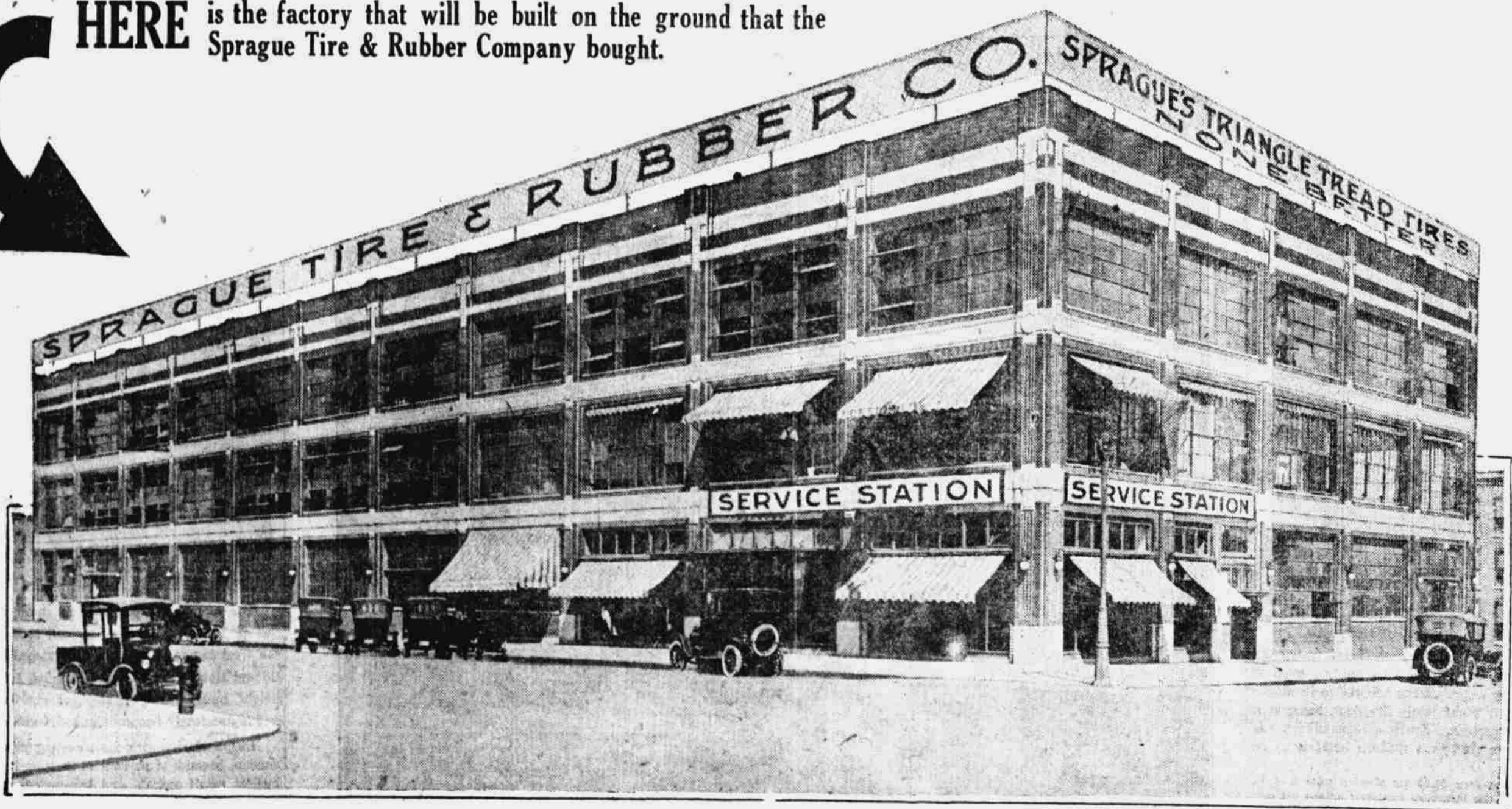


SPRAGUE PLAIN TREAD

SPRAGUE SAFETY TREAD

SPRAGUE RIBBED TREAD

**HERE** is the factory that will be built on the ground that the Sprague Tire & Rubber Company bought.



# Sprague Tire & Rubber Co.

1106-07 W. O. W. Bldg., Omaha, Neb.

Telephones Douglas 1563 and Tyler 3032