

**RAIN-PROOF CAR  
KISSEL'S LATEST**

For Eight Days Sprinklers De-luge Machine, But Interior Remains High and Dry Through it All.

"To prove its leak-proof features a novel water experiment was carried on during the recent all-year car show week conducted by Kissel Car agents throughout the United States," says G. A. Kissel, president of the Kissel Motor Car company.

"One of the regular all-year cars, selected by a committee of prominent men, was placed under a battery of sprinklers so arranged that the water hit the car in exactly the same way as if it was traveling in a regular rainstorm. This test was continued 16 hours a day for eight days, at the end of which time the committee thoroughly examined the car. The result of this unique test is contained in the following extract from the affidavit signed by a member of the committee: 'We found the car to be absolutely dry, with no indication of leak at any part of the interior.' 'The forward end of the car, against which the water had been driven with considerable force during the entire period, was found to be absolutely dry. The same was true toward the back, where the water fell as much as it would have done during a severe storm. Paint and enamel on all parts touched by water were found to be uninjured. It had not been disintegrated or even injured by the water.'

"To my mind, this instance is typical of the advances made by the automobile manufacturers in designing bodies for automobiles whereby motorists can travel in comfort, no matter what the weather conditions are."

**Grant Holds Down the Price of Its Six Car**

Four years ago the Grant Six made automobile history by being the first in the world to sell for less than \$1,000. Within the last four months the Grant has had handed to it the honor of being the lowest priced six in the world and the question that everybody is asking is whether the makers of the Grant Six intend to retain this unique position.

"It would have been easy to boost our prices \$50 or \$75 and to have added a great many thousands of dollars to our profits," says George S. Waite, general sales manager of the Grant Motor Car corporation, "but in that case we should have lost the prestige that comes when hundreds of thousands of people are shown that a car is absolutely unique."

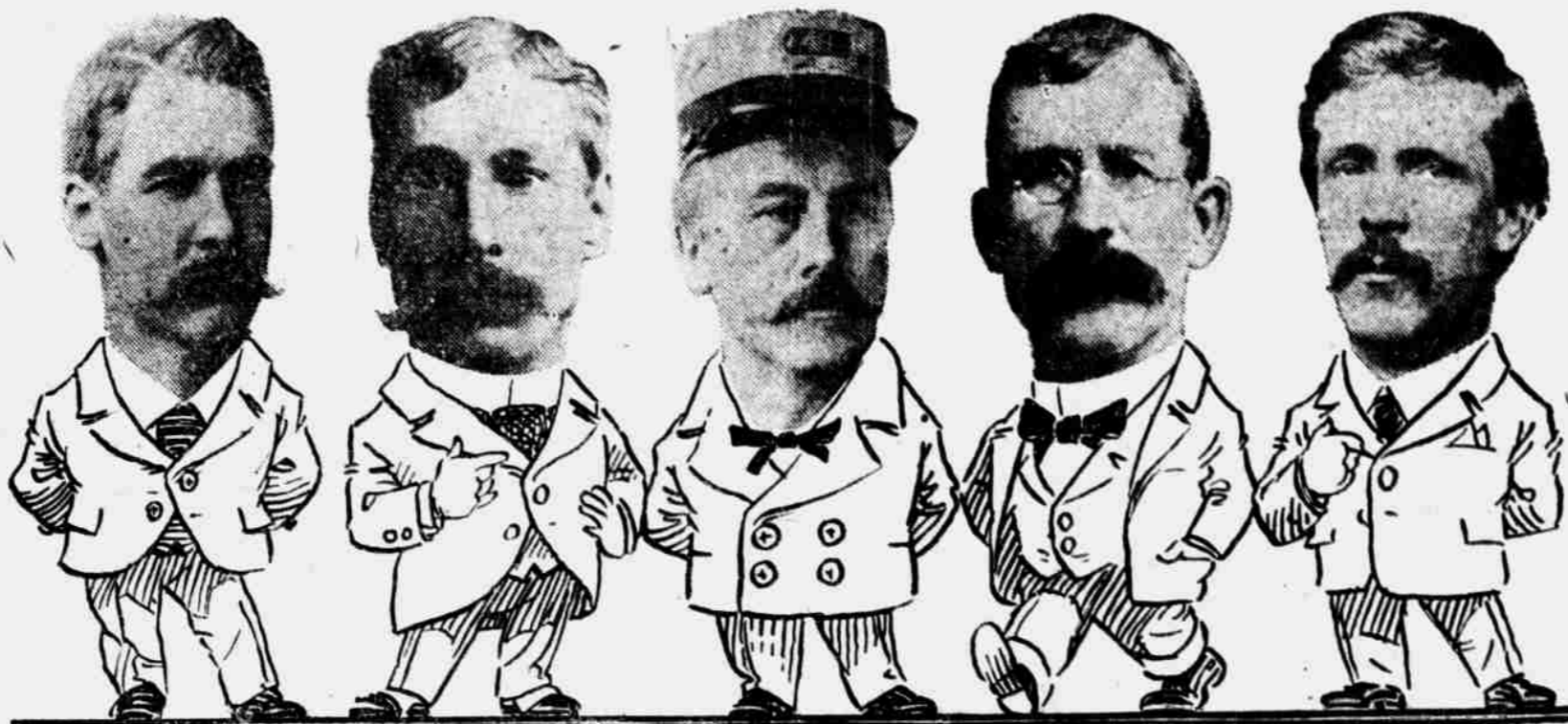
**Omaha Savage Sales Co. To Seek Larger Quarters**

A. H. Smith, vice president; J. C. Danielson and Theodore Smith, directors of the Omaha Savage Sales company, spent Saturday, Omaha, going over the business of the last year and making plans for the coming season.

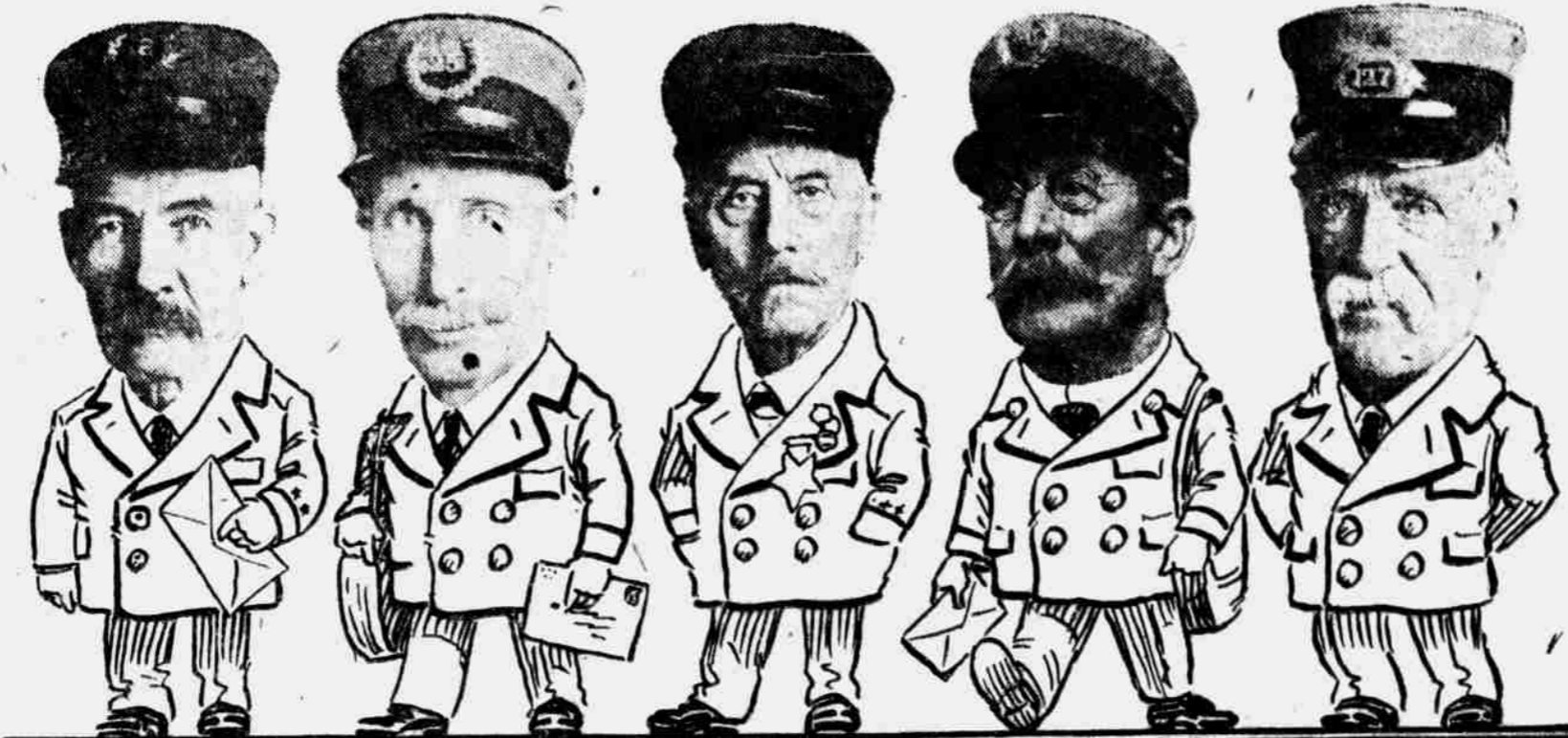
The business done by the Omaha Savage Sales company has exceeded by a considerable figure the estimates of the factory and the officers of the

**Did You Guess Them? Some of These May Have Been Carrying Your Mail to Your Door Every Day for Years**

HOW THEY ONCE LOOKED—



HOW THEY LOOK NOW—



J. M. Stafford C. C. Rose John H. Tebbins James Clark John H. Hobart

organization. E. W. Wilson, manager, has built up a very satisfactory business and many expressions of appreciation were voiced at the meeting.

**Weather Predictions For Week Beginning Nov. 18**  
Washington, Nov. 17.—Weather predictions for the week beginning Sunday, issued by the weather bureau

today, are: West Gulf States—Generally fair, although some slight possibility of rain over northern sections by end of week; no decided temperature changes.

Plains States and Upper and Middle Mississippi Valleys—Unsettled weather and probably local rains Sunday in upper Mississippi valley, otherwise generally fair until near close of week, when there is some prospect of rain except in the northeast. Somewhat cooler Sunday in the Missouri valley and northern plains states.

**REDDEN TRUCK-MAKER**

(Licensed Under Cook Patents) All Others Infringements

**10 Decisive Superiorities**

Here are the FINAL FACTS that decide how lowest-cost hauling is attained. Place all "truck attachments" side by side—these are the comparison facts as you'll find them:

- 1—Redden frame is extra strong—it overlaps Ford frame and bolts through it. This gives increased strength and rigidity. No side extension to allow "weaving," which, with other attachments, causes racking and breaking.
- 2—Redden castings solid steel, instead of malleable iron, and part for part are larger and stronger than corresponding parts in any competing device.
- 3—Our hub flanges and wheels are extra heavy, and our tires are over size.
- 4—The Redden axle is the strongest—a regulation 2-ton axle, 2 1/8 inches square.
- 5—The "Redden-Truck-Maker" is the ONLY ATTACHMENT using two shackle-bars; others have but one.
- 6—The "Redden-Truck-Maker" is the ONLY attachment with solid steel, swivel jointed radius rods and they are extra heavy.
- 7—The "Redden-Truck-Maker" is the ONLY attachment with 5 brakes—there are 2 extra large service brakes on rear hub drums—there are 2 brakes on the Ford hub drums, also the Ford service brake. Other attachments have only 3 brakes.
- 8—The "Redden-Truck-Maker" can be attached in less time than any other, and does not necessitate any cutting of the Ford axle.
- 9—The "Redden-Truck-Maker" is the ONLY attachment which conforms to the S. A. E. (Society of Automobile Engineers) standards.
- 10—Backed by manufacturing facilities and financial resources greater than any other concern in the business.

If you are interested in keeping delivery costs down to the lowest figure you will take the time necessary to prove up these 10 decisive superiorities of the "Redden-Truck-Maker."

**\$350 and a Ford Makes a Guaranteed 1-ton Truck**



Call, Wire or Write for Full Details.

We have some available territory for live dealers.

This license placed on the "Redden-Truck-Maker" is your patent protection



**WESTERN MOTOR CAR CO.**

WESTERN DISTRIBUTORS.

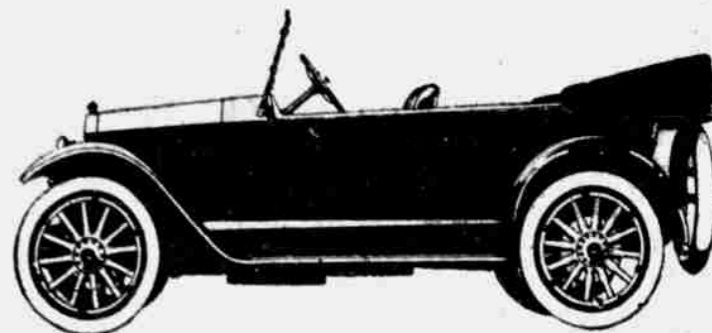
2054 Farnam Street, Omaha, Neb. Phone Douglas 4904.  
CHAS. R. HANNAN, JR., President.  
WALTER S. JOHNSON, Secretary & Sales Manager. E. V. ABBOTT, Vice President & General Manager.  
Branches—Lincoln, Hooper, Hastings, Nebraska, and Wichita, Kansas.

**Fifty Murphy-O'Brien Men Drive Cars From Detroit**  
Fifty men of the Murphy-O'Brien Automobile company leave for Detroit tonight over the Northwestern. Returning home, each man will drive a new Dodge car. This method has

been adopted in order to get new cars from the factory. The railroads are so congested with hauling coal, army supplies and provisions that they are not furnishing equipment for the transport of automobiles.

Persistent Advertising Is the Road to Success.

**Stearns MOTOR CARS**



Stearns Five Passenger Four Cylinder Touring Car

**Economical Power**

A Graphite film forms between the sleeves and on the cylinder walls of the Stearns-built-Knight motor.

This film prevents the escape of gas. Every spray that enters the cylinders is utilized.

This is the reason for the exceptional economical performance of the Stearns.

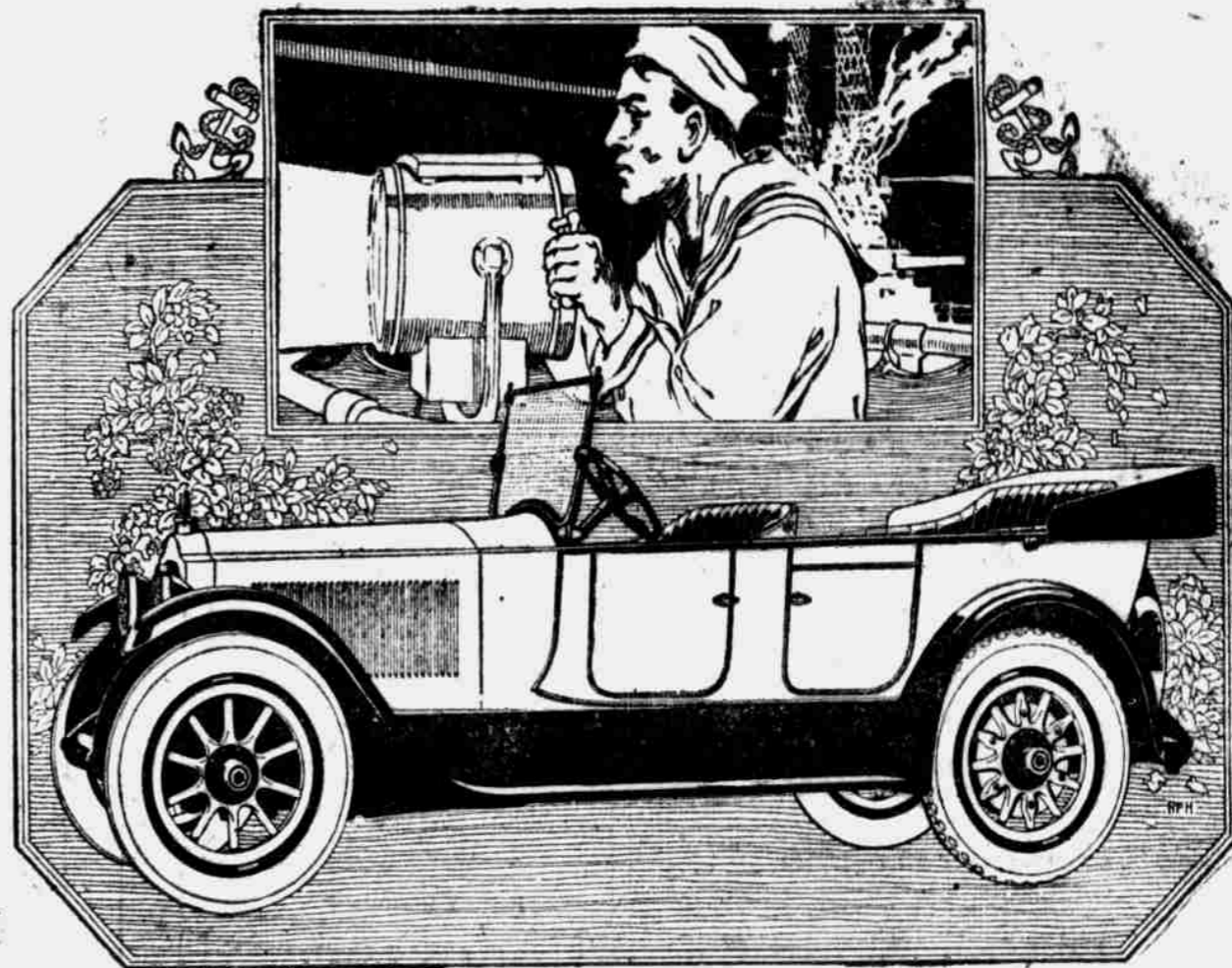
Stearns Four five-passenger Touring Car for Seven, \$1785; Four Passenger Roadster, \$1785; Convertible Sedan, \$2285; Coupe, \$2285; Limousine, \$3200; Limousine Brougham, \$3300; Landulet, \$3300; Landulet Brougham, \$3350

\$1785

Stearns Eight Touring Car for Seven, \$2575; Four Passenger Roadster, \$2575; Coupe, \$3100; Coupe-Landulet, \$3200; Limousine, \$3200; Limousine Brougham, \$3375; Landulet, \$3395; Landulet Brougham, \$3395.

*McIntyre-Hawward Motor Co*  
2427 FARNAM ST. - OMAHA.  
PHONE DOUGLAS-2406.

THE F. B. STEARNS COMPANY CLEVELAND, OHIO



The new Packard Touring Car, seven passengers

**Great light—little lamps**

Miles from its source a blinding sword of flame thrusts itself across the waters.

fuel—concentrate them into an unfailling flood of power.

All because the vagrant rays have been caught and focused into a concentrated and powerful stream of light.

Greater refinements of the Packard mechanism have more than compensated for the lowered refinements of gasoline.

Just as science now gets more light from less current—so does the Twin Six motor extract more power from less gasoline—and gasoline of lower grade.

So that today the powerful Twin Six motor not only gives increased mileage to the gallon, but practically obviates starting difficulties, even in coldest weather.

Its twelve small cylinders put into service all the vagrant forces of the

In the matter of present-day economy the Twin Six is no small factor in national and personal saving.

Seventeen distinctive body styles in open and enclosed cars in the Third Series Twin Six—3-25 and 3-35  
Ask the man who owns one

See the Orr Motor Sales Company  
40th and Farnam Sts., Omaha. Also Lincoln and Sioux City

