

## NEBRASKANS LINE UP ON THE PLAN TO CONSERVE FOOD

One Hundred Thousand Pledge Cards Are Signed, Is the Word That Has Been Sent to Department in Washington.

Unofficial figures indicate that Nebraska have signed more than 100,000 pledge cards, with numerous localities showing a 100 per cent signature, was the message flashed to Washington last night by S. R. McKelvie, state director. These figures are based on incomplete returns made by county chairmen throughout the state.

That Nebraska is responding to the nation's appeal was evident last Sunday when the school children of Omaha and other districts reported unusually large returns. But the follow-up is being made so complete that Food Administrator Wattles' estimate that 90 per cent of Nebraska will join in the food conservation will undoubtedly be borne out.

That all nationalities and especially the German born are co-operating is made evident by county reports. Jacob Jensen, Plainview, writes that 17 loyal German women in his district have signed their cards. They are: Mrs. Anna Blunck, Mrs. Gustav Blunck, Mrs. Sophie Blunck, Mrs. Christian Dibbert, Mrs. H. J. Hoffart, Mrs. H. J. Hoffart, Mrs. Jacob Hoffart, Mrs. J. M. Hoffart, Mrs. Herman Myers, Mrs. A. Niessen and Mrs. Matilda Saathoff, Plainview; Mrs. William Lindburn, Mrs. F. Lortz, Mrs. Phillip Lortz, Mrs. Adolph Niessen, Mrs. B. Schroeder and Mrs. Frank Spatz, Osmond.

### Good Reports from State.

Outside reports rolling into the Bee building office yesterday continued to swell the grand total. Grand Island and Hall county, with large numbers of Germans, report that they will set a record for other counties to follow.

Dodge county is looming up. Fifty-two county school districts of 85 report 1,099 signed cards out of 1,219 families solicited. Eleven of these report 100 per cent signed, with reports from Fremont that the city will sign 95 per cent.

Buffalo county will return about 10,000 cards, according to advices. Merrick county has requested 1,000 more than its apportionment.

Thayer county requests more with advices of 95 per cent signatures. Dawson county, through W. C. Bloom, reports the campaign closed in the rural districts with 98 per cent signed.

From Richardson county it is reported that there has not been a refusal.

Hooker county calls for more cards to complete the canvass.

From Lance Cooper, Phelps county, comes the information that 1,100 families have signed and the county will be cleaned up in a big drive Thursday.

Optimistic reports come from Scottsbluff, Cass and Pawnee counties.

## PROUD DAY FOR CANADA; GREAT VICTORY IS WON

(Continued from Page One.)

Friesland copse fell and Canadians pushed on up the slopes.

The infantry working eastward along the crest of the Passchendaele ridge toward the village progressed rapidly although under a severe fire from many points. Crest farm, just north of the highway, put up a strenuous resistance and a hard struggle was staged there. The farm was heavily armed with rapid fire guns and the Canadians attacked with rifles and bombs.

Artillery Plays Big Part. While the British were struggling with the enemy at Crest farm, the

troops on their left were meeting with trouble from the enemy guns which were concentrated on them. The British artillery came to the rescue with such an intense fire against the German batteries that the hostile shelling decreased greatly. In this lull the Canadians rushed ahead and stormed their way to the village of Meethchele. A violent struggle occurred at close quarters among the cottages in this little place. Those of the enemy who were able retreated toward Masselmart, but at 8:30 o'clock the Bavarians marched out of Masselmart for a counter-attack.

The Canadians at Crest farm, 1,000 yards south of Masselmart, were the first to see this threat developing against their comrades. A number of captured enemy machine guns were brought into play against the advancing Bavarians, with disastrous result. At almost the same time signals reached the British artillery and the enemy was caught in a swirl of gun fire that shattered the ranks and caused a hasty retreat. Shortly afterward, numbers of the enemy were seen running eastward from Masselmart, evidently having had too strong a taste of the barrage fire.

### Water Fails to Stop Them.

At the left the Canadians and English pushed rapidly across the Paddebeek river and assaulted numerous enemy defenses on the eastern bank. The ground was in very poor condition. The Paddebeek was not in flood, but the whole country surrounding it was a marsh in which the men floundered miserably. To add to their troubles there were hundreds of great holes filled with water, into which they often plunged, and from which they were extricated with difficulty.

Such strongholds as Soud farm and Course farm maintained a heavy machine gun fire against them from the moment the advance began. In spite of these difficulties, they pushed their line forward and established contact with the Canadians on their right.

## Uncle Sam Starts Today to Levy His Big War Tax

(Continued from Page One.)

stamps, are in readiness for sale, and the department has had printed thousands of 2-cent post cards. First-class mail postmarked tomorrow or any time prior to 12:01 a. m., November 2, regardless of time taken for delivery, will be transmitted at the old rates, but that postmarked thereafter must pay the increased toll.

Amusement admission taxes become effective tomorrow at places charging more than 10 cents. They are 1 cent for each 10 cents or fraction paid for such admission, payable by the person admitted but collected by the government from the amusement proprietor, required to make sworn returns to the treasury.

A flat tax of 1 cent for each child under 12 admitted when children are charged also is provided. Passes are taxed, except those to bona fide employees, municipal officers and children under 12, at the regular rate, which also is extended to cabarets or other entertainment in which the admission is included in the price paid for refreshment, merchandise or service. Persons leasing theater boxes must pay 10 per cent on their rental.

The new rates on cigars range from 25 cents to \$7 per thousand and on cigarettes from 80 cents to \$1.20 per thousand. Five cents a pound is the new tax on tobacco, snuff and other manufactured tobacco, while cigarette papers are taxed from 1/2 cent to 1 cent per hundred. As the taxes are now reaching the ultimate consumer, the raises mean about 1 cent more on 5 cent tobacco packages, from 2 to 5 cents on cigarette packages and from 1 to 10 cents on cigars.

**Pullman Sleepers Hit.** The taxes on freight and passenger transportation are also extended to motor vehicle competitors of steam and electric railways and water lines. The passenger transportation tax is not applicable to fares costing 35 cents or less or commutation or season tickets for trips less than 30 miles. Payments for services rendered and state governments are exempt from taxation.

The 10 per cent tax on Pullman accommodations is applicable to payments for seats, berths, and state-rooms in parlor and sleeping cars or on vessels.

The 5-cent tax on telegraph, tele-

## INVITE A SOLDIER BOY TO YOUR THANKSGIVING DINNER

People of Omaha Are Asked to Entertain Distinctive American Holiday Men Who Will Fight Nation's Battles; The Bee to Bring Hosts and Guests Together.

You good people of Omaha listen to this: Thanksgiving day, the one distinctive American holiday, offers you a wonderful opportunity to show your appreciation of the boys who are going to fight your battles for you.

You can perhaps send your boy at a distant training camp something to make his Thanksgiving more cheery, but you have the chance, right here at your own door, to make a cheery Thanksgiving for someone's else boy—for one of the boys in khaki who is waiting the call in our army posts at Omaha.

With assurance from the military authorities of their co-operation, The Bee will undertake arrangements whereby every family in Omaha so disposed may invite one of the soldiers to Thanksgiving dinner.

This is not to be done in a spirit of charity or compassion, but in a spirit of sociability.

The Bee will ask those who feel like entertaining a soldier on Thanksgiving day to send us their names and we will have the invitations duly issued, subject to acceptance. The Bee will do all the work to bring hosts and guests together. Details of the plan will be developed and announced soon. We ask all of you to take notice of what is coming so you can respond promptly when the word is given.

phone or radio messages costing 15 cents or more applies only to those originating in the United States.

Clubs whose dues are less than \$12 a year and fees to lodges are exempt from the 10 per cent tax on club dues.

The new insurance taxes are imposed on new policies issued, with reinsurance policies exempted. Industrial of weekly-payment policies are taxed 40 per cent on the first premium on policies for \$500 or less.

## Michaelis Stays as Prussian Premier; Confirm Hertling

(By Associated Press.)

Berlin, Oct. 31.—(British Admiralty, per Wireless Press).—Official announcement is made that Chancellor Michaelis has resigned and that Count von Hertling, the Bavarian premier, has been offered the chancellorship.

The announcement says Count von Hertling is now negotiating with the leaders of the Reichstag parties.

Copenhagen, Oct. 31.—The Berlin newspapers agree in stating that Count Hertling was tendered only the post of imperial chancellor and not of Prussian premier. According

to a well-defined report, it is purposed to retain Dr. Michaelis in the latter post to supervise the fate of the Prussian franchise reform measures and to diminish, as far as possible, the loss of prestige caused him by his short tenure of office in the chancellorship.

The socialist newspaper, Vorwarts, says it understands that the Prussian franchise measures have now been drafted and will be ready for submission to the Diet as soon as they receive the royal signature. It reports them as consisting of three separate bills, covering the change in the franchise requirements for the lower chamber, the reform of the House of Lords and the extension of the budget rights of the lower house.

The franchise contemplated is based upon equal suffrage, but with extended residence qualifications, the newspaper explains. The bill for a general redistribution of the electoral districts will not be introduced at present, it is stated, but legislation providing for an extra number in 12 particularly large districts will be submitted.

## Today Has Been Set Aside as Apple Day

This is "National Apple day," when the attention of "Health's best way" eat an apple every day.

## INVESTMENT OR SPECULATION?

THE risky venture, presented in the guise of an "investment," may not appeal to you.

But how about your inexperienced wife or child?

You will do well to place the management of the capital you are to leave them in the hands of this experienced, conservative Company.

PETERS TRUST CO.  
CAPITAL \$500,000  
1622 FARNAM STREET

# Columbia Grafonolas

Are Supreme

If you are interested in the purchase of a phonograph be sure and investigate the

## COLUMBIA GRAFONOLA

Always in the lead for tone and durability, for beautiful finish and design, the Grafonola has been awarded first prizes wherever displayed. It received the highest award at the Panama-Pacific International Exposition for general superiority and educational influence. The grand prize at the St. Louis International Exposition. Also the grand prize at Paris in 1900, at Milan in 1906, at Buenos Aires in 1910, at Seattle in 1909, and two grand prizes at the San Francisco Exposition in 1915.

Prices and Terms Within the Reach of Everybody

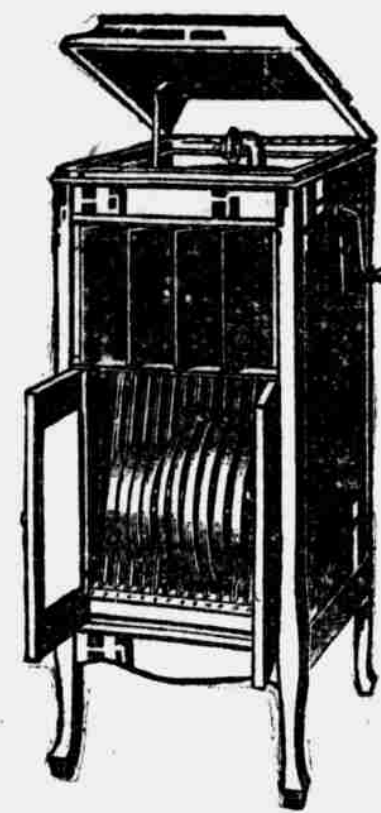
Why not visit our warehouses, select one of our latest models and try it in your home? We are sure to convince you the Columbia is the best. It will bring more happiness and enjoyment to your home, considering the investment, than any other phonograph.

We furnish catalogue and terms on request, and deliver the instrument free.

Come to our Grafonola Department today and make your selection for Christmas delivery. We are sure there will be a shortage this year, so we urge immediate action.

Either of These Outfits Sent to Your Home on Approval

### GRAFONOLA OUTFIT A



GRAFONOLA OUTFIT B

Includes this Beautiful Grafonola and twelve selections (six 10-inch double-disc Records). Only—

**\$89.50**

Terms, \$1.00 per Week

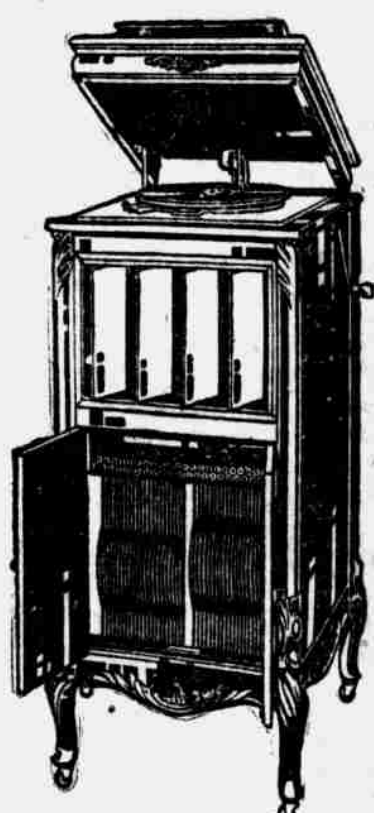


GRAFONOLA OUTFIT C

Complete with twenty selections (ten 10-inch double-disc Records) and this late model Grafonola, equipped with individual record racks and ejector. Only—

**\$33.00**

Terms, 50c per Week



GRAFONOLA OUTFIT C

Complete with twenty selections (ten 10-inch double-disc Records) and this late model Grafonola, equipped with individual record racks and ejector. Only—

**\$127.50**

Terms, \$1.50 per Week

### A WORD ABOUT OUR RECORD DEPARTMENT

We carry a complete stock of Columbia Double-Disc Records (domestic and foreign) and solicit the patronage of every home that has a phonograph. Complete Record Catalogue furnished on request. Records sent on approval. If unable to call, phone your order to Douglas 1623.

For the next 30 days we will give away absolutely FREE an excellent Record Cleaner to every purchaser of Columbia Records.

**SCHMOLLER & MUELLER**  
PIANO CO.  
Omaha's Leading Grafonola Store  
1311-13 Farnam St.  
OMAHA, NEB.

## Speeding Up

Speed, efficiency and economy—that is the challenge to American industry today. Above all, speed—but in modern industry no speed that has staying power is gained without efficiency. Economy is needed, too, but it is economy of time, materials and labor—not mere hoarding of money. In any hauling or local transportation problem, the surest way to do it quicker, better and cheaper is to do it with a Pierce-Arrow truck.

## Pierce-Arrow Motor Trucks

for example: The Interurban Transportation Company of St. Louis, Mo., now operates twenty-one Pierce-Arrow trucks which are rented out under a wide variety of service conditions. After careful comparative operating tests, the company has disposed of all its trucks of another well-known make and has standardized its fleet with Pierce-Arrows.



Great commercial successes are built upon sound economies like those effected by Pierce-Arrow Trucks. A smaller business should not deny itself the advantages on which big business thrives.

**J. T. STEWART MOTOR CO.**  
2048-52 Farnam St., Omaha. Phone Douglas 138.

# Julius Orkin

1508-1510 Douglas St.

—a wonderful

## SALE OF COATS

Starting Thursday Morning, 8:30 Sharp

More than 400 beautiful new coats have arrived during the first part of this week to augment our already immense stocks. These coats have been immediately placed in the three great sale groups, which make buying tomorrow double interesting—particularly to those who are exacting in their style ideas.

**COLORS** Taupe, Navy, Seal Brown, Cadet, Beet Root, Greens, Black, Grey, Plum, Deer, Pekin Blue.

**FABRICS** Wool Velours, Pom-Pom, Broadcloth, Burella Cloth, Kersey, Plush and Twill Coatings.

**STYLES** Large combination collars, high waisted models, pleated, gathered and belted backs; plush and fur trimmed.

**\$29.50 and \$35**  
**COATS \$25**

Strikingly attractive coats of velour, kersey, burella and pom pom, including all favored colors.

Large collars, trimmed in plush and kerami with cuffs to match, wide variety of new belt effects; half and full lined; large buckle and button much in evidence.

**\$39.50 and \$42.50**  
**COATS \$29.50**

Finest kerseys, velours, broadcloths, burella cloth, in seven leading colors; half and full lined.

Plush, Fur and Kerami Collars and Cuffs, immense combination collars that muffle close up around your ears. These are values you will not be able to duplicate this season.

**\$45 and \$49.50**  
**COATS \$35**

Huge collars of kerami, plush and fur, with novel cuffs to match; half and full silk lined.

Rich Pom Poms, Broadcloths, Velours, Burella Cloths and Plushes; stunning style creations; every new color is found in this especially attractive group.



When Writing to Our Advertisers  
Mention Seeing it in The Bee