

STUDEBAKER BUYS MILLION IN BONDS

Motor Car Corporation Shows Patriotism by Making Second Million Dollar Purchase of Bonds.

For the second time Studebaker has subscribed a million dollars to the government to help win the fight for democracy, President A. R. Erskine, of the Studebaker corporation, has announced that his company has purchased \$1,000,000 of the second Liberty loan.

"We have made this second purchase because we feel it our duty," says Mr. Erskine.

"Modern war costs money. It takes billions to feed, clothe and munition our soldiers; to build guns, ships, airplanes; and to transport and protect our men. Those of us who stay at home must furnish the money."

As in the case of the \$1,000,000 purchase of the first Liberty loan, employees of the corporation will be given an opportunity to buy a bond of one of the denominations on the partial payment plan. This method was found to be very satisfactory and successful at the time of the first loan, hundreds of the employees of the factories in South Bend and Detroit taking advantage of the opportunity to show their patriotism in a good substantial manner. The corporation, Mr. Erskine asserts, will probably dispose of at least \$300,000 worth of the second Liberty loan bonds in this way.

"The subscriptions are not a gift. A loan to the government," said Mr. Erskine in a bulletin posted in the big factories. "In exchange for this loan you receive government bonds which are today the safest security in the world, and pay 4 per cent interest."

"It is a patriotic duty, and should be the privilege of every man and woman in America to buy these bonds."

Silo Company Delivers By Packard Auto Truck

The motor truck is not only a tremendous help to the farmer in hauling his products to market, but it is also of big advantage in getting his supplies from the city out to his farm.

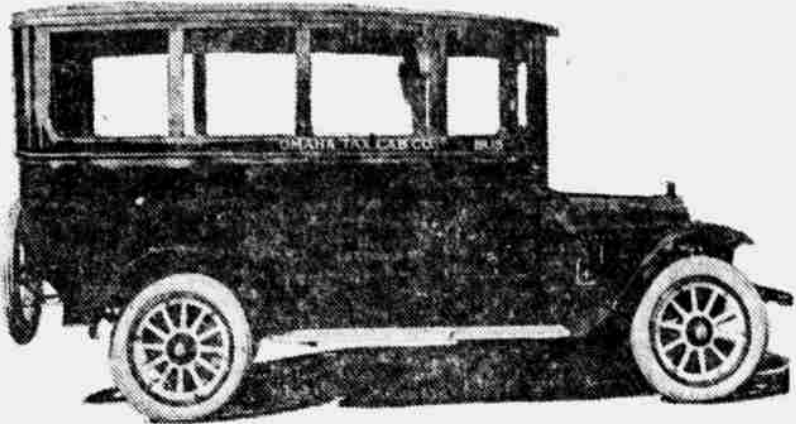
Take, for instance, the silo, so necessary in America's crop conservation program. Heretofore silos were generally shipped by freight, with ultimate delivery at some siding perhaps miles away from the farmer's barn. The farmer often did without the silo rather than submit to this delay and inconvenience. His forage crop went to waste instead of into ensilage.

The Alfred Struck company of Louisville, Ky., has built up a good silo business in a short time largely through ability to make exceedingly prompt shipment by means of an extended motor truck delivery.

Struck does not depend on railroads for any distance up to fifty miles from Louisville, but makes the haul with his three-ton Packard truck. If there is too much material for the truck, the Packard hauls a trailer of like capacity.

The farmer hones his order one day and the material is delivered and the erection of the silo started by noon of the next day.

One of the White Models Used in Taxi Service On Omaha Streets



The above picture represents Omaha's latest addition to its transportation facilities. It is the latest addition to the equipment of the Omaha Taxicab company.

This bus will operate between the various hotels and the railway stations upon a regular time schedule. It is a special body with leather upholstery, electric lights and all convenient equipment, mounted upon a three-quarters-ton truck chassis. The cost of one of these jobs is about \$4,000.

Auto Service Department of The Omaha Bee

Any questions asked by our readers will be answered by H. A. Tarantous, Technical Editor for one of the leading motor publications in America. Mr. Tarantous is a practical automobile man and a member of the Society of Automotive Engineers. Address your question to the Automobile Editor of The Omaha Bee, and enclose a 2-cent stamp for postage.

What is meant by 10 degrees of crank movement after top dead center when speaking of valve timing. I understand the dead center, but what does the rest mean?—John B. N.

The expression means just what it says. Crank movement means movement of the crank shaft. This 10 degrees refers to the number of degrees the crank shaft has traveled, but crank alone is used because it refers to one throw of the crank shaft of a particular cylinder. Ten degrees on the fly wheel would be just the same.

Is there any advantage in using more than two valves to each cylinder. I understand that there are a number of cars using an engine with four valves to each cylinder. Why this construction?—A. R. W.

More valves are used to obtain a larger valve area so that more mixture can be taken in on the suction stroke and the burned gases expelled more quickly on the exhaust. This is necessary for high speeds and power and was first extensively used in this country in racing car engines which today employ this form in almost every instance. Two passenger car engines use sixteen valves in four cylinders, but the cylinders are T-heads and not valve-in-the-head as is the case with the racers.

What would you advise as the best way to get easy starting in cold weather? We are not getting this weather here as yet, but I want to be prepared.—Worthy.

I know of nothing better than a good priming outfit operated from the dash of the car. This consists of a tank and control and a lead to the inlet manifold. The tank should hold about one quart of the high-test gasoline or petroleum ether if you can get it from some oil company. The battery should be in good condition if the car is fitted with a starter so

Storage Battery Needs More Attention in Winter

"During cold weather the storage battery is a particularly delicate part of the automobile and needs special attention," asserts R. C. Smith, manager of the Delco Exide Service station.

"The effect of freezing upon the plates or grids of a battery is very similar to that caused by water freezing in the radiator. No motorist would consider driving a car during cold weather without an anti-freeze solution in the radiator, and no motorist should allow the storage battery to run down or become discharged during cold weather.

"When the battery is run down or discharged the acid has all entered the plates, leaving little but water surrounding them, and the result will be a frozen battery when the weather is around zero.

"The ice expansion loosens the material and cracks the grids and as soon as charging occurs after the freezing the grids expand, allowing the loosened active material to drop to the bottom. The result of this action is that the entire battery is apt to disintegrate.

"If the car is put away for the winter it should be fully charged and an additional charge given every two or three weeks to bring it up to its proper gravity reading. Neglect of the battery in a car stored during the winter may reduce a battery, which readily started the engine in the fall, to nothing but a container and a mass of muddy, disintegrated material."

Tools Are Within Easy Reach in the Westcott

"Tools play a very important part toward the satisfactory operation of an automobile," says Carl Changstrom of the Standard Motor Car company. "No motor car owner fails to appreciate the necessity for occasional adjustments, tightening of loose connections and other details requiring tool equipment, either at home or enroute.

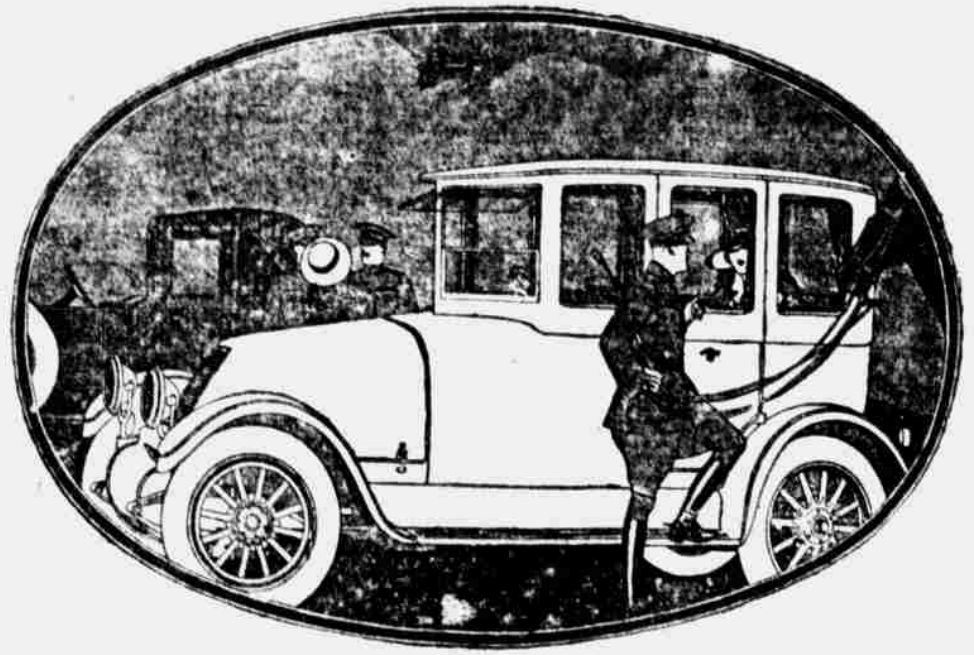
"The location of tools under the front or rear seat has always been a source of considerable annoyance and inconvenience. After the effort to reach them, they are usually found in a disarranged condition, with always the wrong one on top. Tools carried in this manner invariably rattle and shake around, with a considerable discomfort to passengers when the car is in motion.

"One of the handy features on the Series 18 Westcott is a special built-in carrier for tools in the left front door beside the driver. Each tool is held rigidly in place in a separate division; there is no chance for rattle, and all are immediately accessible when required. The tool compartment is made a part of the upholstery and hardly noticeable when not in use."

I have had my battery only a few months and have taken good care of it, yet it does not seem to have the power it should have. It has three cells and one of the cells seems to need more water than the others because every time I inspect the battery I cannot see the level in the bad cell. What can go wrong with a cell?—Thompson.

Probably the jar is cracked and the electrolyte is leaking out. One dead cell (which that one would be a few minutes after you refill) will pull the whole battery down and possibly cause an open circuit, thus putting the unit out of commission. Take the battery to a service station and let them examine it.

Brainard High Wins Game. Valparaiso, Neb., Oct. 13.—Brainard High settled the tie in base ball by coming down Friday and winning from Valparaiso High by a score of 16 to 7. Batteries: Brainard, Sowers and Rerucha; Valparaiso, Recroft and Bartels.



When You Look for a Car You Can Use Anytime

MANY people nowadays depend entirely upon their Franklin Sedan for all motoring requirements—a very satisfactory way to conform to the national policy of *war-time thrift*.

In reality, the Franklin Sedan owes its popularity to its adaptability to touring—yet it is none the less a cold-weather car.

It has taken Franklin *resiliency* and *light weight* to free

the enclosed car of all the old limitations.

The Franklin Sedan is practically as economical in gasoline and tires as Franklin open cars. And as easy to handle, as safe and as active over the road.

A car that gets away from cumbersome and serves the owner as a *true utility*.

A car that any member of the family enjoys driving—an important factor in self-reliant motoring.

FRANKLIN MOTOR CAR CO.

2205 Farnam Street. Phone Douglas 1712.
R-U-2-B-1-of-60

Do Your Tires Suit You? —or the Service?

PERHAPS you are satisfied with the service being given you by the tires you use.

If you are, that is well, and the limit of any tire's accomplishment.

But perhaps you feel as does another portion of the motoring public, that your tire money should buy a little more, in miles and untroubled travel, than it does now.

As much more, say, as the highest type of materials and method could give.

If you feel this way, we suggest that you swing with the general trend, and try Goodyear Tires.

They are the preferred tire of this hemisphere—more of them are bought by the motorists of America than any other brand.

Perhaps, also, you are not satisfied with the tire service rendered you by the man who sells you tires.

Perhaps you feel he should take a greater interest in the way your tires wear.

Here, again, we suggest that you swing with the general trend and accept the very adequate tire service which we Goodyear Service Station Dealers offer you free.



This sign identifies the Goodyear Service Station Dealer.

Goodyear Tires, Tubes and Accessories are always kept in stock.

THE NOVELTY REPAIR CO., 4809 South 24th St.—Phone South 1404.

HOLMES-ADKINS CO., 4911-15 South 24th St.—Phone South 420.

NATIONAL AUTO SCHOOL, 2814 North 20th St.—Phone Webster 5943.

THE MOTOR SUPPLY CO., 1917 Farnam St.—Phone Douglas 7895.

ORR MOTOR SALES CO., Packard Show Room.

NEBRASKA SERVICE GARAGE, 218-20 South 19th St.—Phone Douglas 7390.

CHAS. W. WALKER GARAGE CO., Fontenelle Garage—Auditorium Garage, and C. W. Walker Garage, 36th and Farnam Sts.

THE TIRE SHOP, 2518 Farnam St.—Phone Douglas 4878.



What's the Difference?

The only difference that shows on the outside is the trade-mark, but *that's enough* for any wise car-owner.

He knows that it stands for a *big difference inside*, that it is the mark of Willard Threaded Rubber Insulation, the latest and the greatest improvement in battery construction.

And this means a Still Better Willard Battery, more durable insulation, a more economical battery to own, and unit for unit of electricity, more for his money.

Come in and let us explain more fully the difference between Threaded Rubber Insulation and other kinds. It will pay you.

Nebraska Storage Battery Co.

2203 Farnam St. Omaha, Neb. Tel. Doug. 5102.
Authorized Willard Service Station.

