

NEIGHBORING TERRITORY IS PROSPEROUS

Much Real Estate activity is reported from surrounding towns.

Columbia Life Insurance Co.

HOME OFFICE
Fremont, Nebraska

Old Line life and accident insurance.

Policies unique. More complete coverage than usually granted.

Direct and permanent contract with Agents.

Nebraska State Building & Loan Association

Fremont, Nebraska

Agencies in 150 Nebraska Towns

Assets - - - \$2,000,000.00

We will loan you money to buy or build a home.

Minimum rate \$1.15 per share per month.

Write home office for particulars.

T. L. MATHEWS, President,
D. D. ROWE, Secretary.

IOWA FARM BARGAINS

120 acres south of Council Bluffs, well improved. Has about 75 acres fine bottom land, balance rolling timber pasture. Must have quick action on this place. A splendid bargain at \$120 per acre. Reasonable terms.

187 acres south of Council Bluffs. 55 acres hill land and balance bottom. A good stock farm. Fair improvements. Only \$60 per acre.

78 acres in the hills 4 miles north of Council Bluffs with 6-room house, large barn, brick cave, chicken house and hog house. About ten acres in cultivation and fifty acres fit for cultivation; balance good blue grass pasture. This is a well balanced stock farm. Very attractive at the price—\$90 per acre—and can be sold on very easy terms.

Choice ten to twenty-acre tracts north of Council Bluffs partly in cultivation; good soil; near school. These tracts will make splendid small farms and are sold on easy terms with small payment down. Price \$75 to \$100 an acre. A good chance to secure a good home with a small piece of land at a small outlay.

WE SPECIALIZE ON IOWA FARM LANDS.

J. P. Hess Co.

123 PEARL ST., COUNCIL BLUFFS, IA.

Florida Lands.

FLORIDA—Get special offer on splendid farm land near Jay, Jacksonville Heights Co., Jacksonville, Fla.

Idaho Lands.

LAND OPENING

at Pico, Idaho, began July 17, 1917. Over 2,000 acres of rich, fertile land will be put upon the market at an average price of \$70 per acre (which includes paid-up water right); \$20 per acre cash balance on ten years' time; 5 per cent interest on deferred payments. No additional payments for two years except interest. This is an exceptional opportunity. Ask us about it TODAY. Authentic information ABSOLUTE FREE.

R. A. Smith, Colonization and Industrial Agent, Union Pacific System, Room 1419 Union Pacific Headquarters, Omaha, Nebraska.

Missouri Lands.

BEAUTIFUL Bates County, Missouri, corn, clover and blue grass farms for sale; write for free booklet. Charles B. Bowman, Butler, Mo.

New York Lands.

FOR SALE—Delightful farm home at Canandaigua, N. Y. Both city and interurban car service. Colonial cobblestone house, bath steam heat, electricity, garage, barn, chicken house, sixty acres land, ten acres young orchard; thirty-one acres wheat being put in will go with farm; also personal property. Will sacrifice for immediate cash sale. CHURCH & CHURCH, AGENTS. Established in 1872. Canandaigua, N. Y.

Miscellaneous.

BEFORE buying or selling a farm read "Farm Loans and City Bonds" Hartford Bldg., Chicago; 20c a copy; 42 a year.

Wyoming Development Company Owners

Wheatland, Wyoming, Lands

Ex-Governor Joseph M. Carey, President

We will run an excursion next Thursday afternoon from Omaha to Wheatland, Wyo. Round trip fare about \$30.00.

Wire or phone at once for reservations on train.

We raise 60-lb. wheat 30 to 50 bushels to the acre.

We raise 40-lb. oats 75 to 100 bushels to the acre.

We raise 4 to 6 tons of alfalfa to the acre.

We raise 200 to 400 bushels of potatoes to the acre.

We raise 20 tons of sugar beets to the acre.

We raise an abundance of apples and small fruits.

With rich soil and a never failing water supply we raise the crops.

Splendid water and fine climate. Lands protected by the mountains on the west and northwest.

Sixty thousand acres of land to select from.

We can sell you a farm 3 to 10 miles from good railroad town at \$35.00 to \$50.00 per acre, including paid-up water rights—one-third to one-quarter down, balance easy terms.

Send us your name and address and we will mail particulars.

Wyoming Development Company

854 to 857 Omaha National Bank Bldg. Phone Doug. 594.

Omaha, Nebraska

Henry Levi and C. M. Ryland

General Sales Agents

South America Offers You Great Opportunities



Roundup of 10,000 Head of Cattle on Tex Rickard Ranch, west of Paraguay river, in South America, near lands in Bolivia.

FERTILE UNDEVELOPED LANDS WITHIN THE REACH OF ALL in the richest undeveloped section of the world's habitable lands.

MILD CLIMATE, EXCELLENT HEALTH CONDITIONS, ABUNDANT RAINFALL, WIDE RANGE OF CROP PRODUCTION.

NATIVE CATTLE by hundreds of thousands fatten on the grassy plains.

GAME in abundance, including deer, spotted tapir, quail, wild turkey, many varieties of edible water fowl, and numerous streams literally teeming with various sorts of fish.

VIRGIN FORESTS of gigantic trees and wood for every purpose.

THE WORLD'S GREATEST STOREHOUSE OF

EVERY KNOWN MINERAL that have as yet scarcely been touched and seem to be inexhaustible, and PETROLEUM fields said to be the largest undeveloped in the world.

SOUTH AMERICA IS ON THE EVE OF A TREMENDOUS DEVELOPMENT in every line and many FORTUNES ARE GOING TO BE MADE by those taking part.

YOU CAN GET GOOD FARM OR RANCH LAND by assisting LA AMERICANA SYNDICATE defray the expense entailed with the securing of a number of blocks of several million acres of choice agricultural and grazing lands in southern Bolivia and other expenses preparatory to their development. Take the matter up now with

LA AMERICANA SYNDICATE

4th Floor First Nat. Bank Bldg. Lincoln, Nebraska

Texas Lands.

LANDS AT fair value assured by Chamber of Commerce. New plans to settle and develop the most fertile lands of South Texas immediately adjacent fine market. Farming and dairying demonstration under our direction. Only approved lands offered for sale. If you want to own a farm write for booklet J. Agricultural Dept., Chamber of Commerce, Houston, Texas.

GOOD corn land, east Texas, \$25 an acre. Get my free book. W. B. FRANK, 261 Neville Block, Omaha.

Wyoming Lands.

RELINQUISHMENT of 540 acres valley land creek branch, drilled well and new frame house. Five miles from new oil field, near Douglas, Wyo. Box Y 227, Omaha, Neb.

Oregon Lands.

"Heart of the Range." Jordan valley project, Oregon, 44,000 acres irrigated land. Free map. Next excursion October 2. HARRY J. HOOKER, 240 First Nat. Bank Bldg., Omaha, Neb.

Persistent Advertising Is the Road to Success

300-Acre Farm, \$6,500 With 75 Tons of Hay, Crops, 4 Horses, 20 Cows and

Horses, 2 bulls, 2 colts, 7 calves, 16 sheep, 3 hogs, 150 poultry, turkeys, mowers, horse rake, plows, harrows, cultivators, new mangle spreader, corn planter, horse hoe, wagons, cart, carriage, sleighs, 6 sets harnesses, 100 bu. potatoes, 100 bu. apples, oats, corn, beans, vegetables, dry wood and cream separator. Nearby creamery buys cream, skim milk fed hogs. Estimated 1,000 cords wood, 500,000 ft. spruce and pine, 5,000 sugar maples, 500 apple trees. Good 16-room residence, tented house, barns, 75-ton silo. Aged owner and income. For moderate-priced FARMS, LEY, NEB., for moderate-priced FARMS and RANCHES in eastern and central Neb., Easy terms.

WRITE MINER AND JOHNSON, GREENE, LEY, NEB., for moderate-priced FARMS and RANCHES in eastern and central Neb., Easy terms. SEND your name today. Receive offers from land owners, agents, everywhere. UNITED REALTY ASSOCIATION, July 11, 1917.

80-ACRE FARM

\$125 per acre will buy 80-acre farm near Council Bluffs, Ia. Can carry mortgage back for part of purchase price. Improvements are: 5-rm. dwelling, large barn, double corn crib and hog house.

CHAS. T. OFFICER

Real Estate, Loans

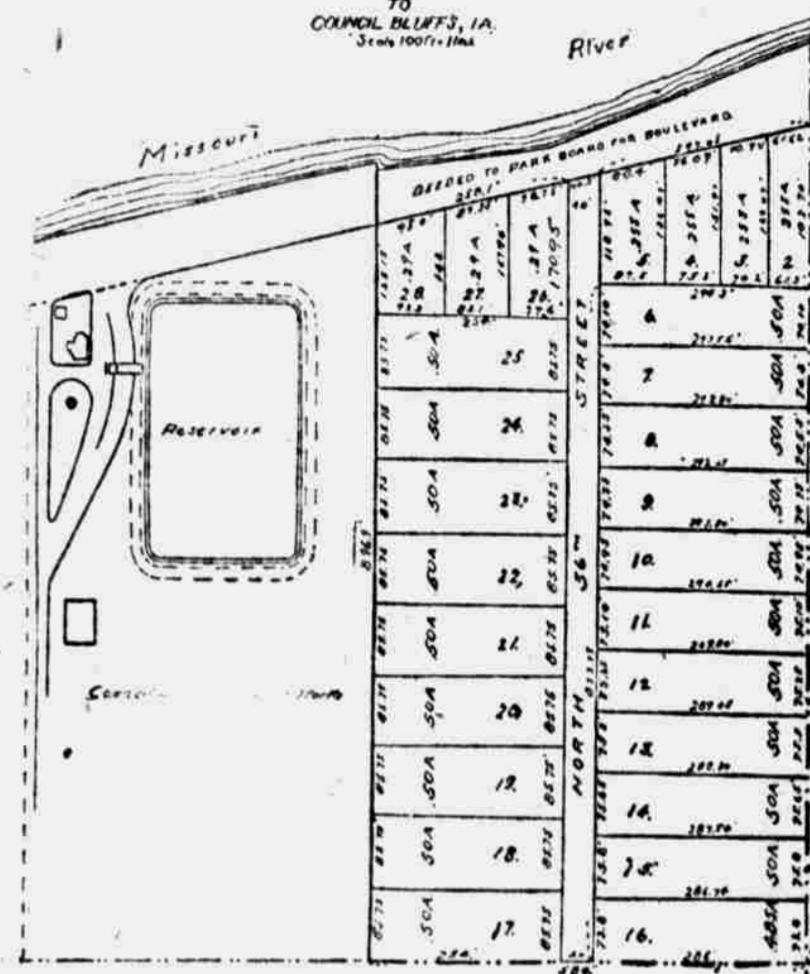
and Insurance

128 South Main St.

Council Bluffs, Ia.

LIBERTY ACRES

AN ADDITION TO COUNCIL BLUFFS, IA. Street 10071-10164



LIBERTY ACRES

HOME LAND SALE

Saturday, Oct. 6th, 1917

On Saturday, October 6th, we will place on sale twenty half-acre home tracts at \$300 to \$400 each. Salesmen will be on the grounds.

NO TAXES UNTIL 1920
CITY WATER, ELECTRIC LIGHTS,
LEVEL LAND, PERFECT TITLE

Terms: 10% Cash, Balance Easy

Think of a new home surrounded by a half acre of ground, only ten minutes' ride to the heart of Omaha or Council Bluffs.

LIBERTY LOAN BONDS ACCEPTED AS CASH

ONLY SIX BLOCKS TO MAIN CAR LINE

Get off at 36th Street and Avenue A, Council Bluffs, and walk north.

Wallace Benjamin & Company

19 North Main St. Phone No. 55.
Council Bluffs, Iowa.

IOWA FARMS ALFALFA--WINTER WHEAT--CORN

The following farms in Western Iowa will bear the closest investigation:

320 acres, all blue grass, drainage tax all paid, level, black virgin soil, good fence and windmill, three miles to Ringsted, Ia. Price, \$125 per acre.

320 acres, all native hay, 3 1/2 miles to Onawa, Ia. Rents \$5.00 per acre cash. Want Omaha residence. Price, \$100 per acre.

160 acres, 2 miles from town of 4,000. New modern farm house, mile from school, on main road. Land all in crop. Price, \$200 per acre.

96 acres, one mile from town, one-half mile from school, nearly new set of buildings; price \$175 per acre.

240 acres, 5 miles from town; 7-room house in first class condition; new double crib; new barn; land all in cultivation; rented for season of 1918; one-half of crop delivered in market; price, \$162.50 per acre.

520 acres, two miles from good market; two sets of buildings; 60 acres rough land; 300 acres corn, 15 acres alfalfa, balance pasture and small grain; one mile from school; will divide farm to suit purchaser; \$135 per acre.

I make a specialty of Iowa farms of all sizes and am in position to serve you well if you want anything of this kind. Write, call or phone

FRANK L. KILBY,

340 Bee Bldg. Phone Douglas 4313.

MONEY TO LOAN

Organized by the Business Men of Omaha. FURNITURE, pianos and notes as security \$40. \$ mo. H. goods, total cost, \$2.50. \$10. 6 mo. interest notes, total cost, \$2.50. Smaller, large amt's proportionate rate. PROVIDENT LOAN SOCIETY. 412 Rose Bldg., 16th and Farnam. Ty. 604

FARM LAND WANTED

WANTED—To rent, grain or stock farm, furnished, on shares, or will take charge of same for a salary by the year. Can give references. C. E. R., Alliance, Neb.

WE can sell your farm if you will list it with us at a bargain for the man who buys. E. P. Snowden & Son, 412 E. 15th St. 1917.

Horses—Live Stock—Vehicles.

BEAUTIFUL fancy saddle horse, will sell or trade for used car. Phone Colfax 1964. BEAUTIFUL fancy saddle horse, will sell or trade for used car. Colfax 1964. STYLISH saddle horse for lady or gentleman. \$125. 1102 S. 90th Ave. HORSES for sale. 1712 Webster St.

POULTRY AND PET STOCK

PIGEONS! PIGEONS! PIGEONS! Thirty-six homers mated and working. Must sell at once. Address Bx 741, Central City, Neb.