

ENGINEERS MEET AT TRACTOR SHOW

Men Who Design the Giant Engines Talk Over Plans to Make Them Standard.

One of the big events that will make the Fremont tractor demonstration this week a truly national affair is the series of meetings for tractor engineers to be held under the auspices of the Society of Automotive Engineers, the national organization handling tractor activities.

The first meeting of the engineers was held Wednesday morning at 9:30 in the grand ball room of the Hotel Pathfinder, when tractor standardization was considered. The tractor division of the Society of Automotive Engineers standardized a number of tractor subjects, among them being tractor drawbar and belt-power rating, belt speed, height of tractor hitch and plowing speed. All these were discussed at the standardization meeting. This work is vitally important from both the manufacturers' and users' standpoint.

Harry L. Horning, general manager of the Waterloo Motor company, is chairman of the tractor standards division and presided at the meeting. The windup of the Society of Automotive Engineers' program will take place Thursday evening at Masonic hall, when an entire session will be devoted to the tractor service problem. Fred C. Glover, vice president of the Emerson-Brantingham company, will be in the chair. Dent Parrett, president of the Parrett Tractor company, will present a paper, L. D. Duntley, Emerson-Brantingham company; Fred P. Steele, Lyons-Atlas company; S. C. Turkenkoph, Moline Plow company, and service representatives of other prominent tractor companies, will discuss the subject.

French Government Buys 1,500 of the Bull Tractors

The Bull tractor people, again prominent in the Fremont Tractor show, are claiming that their tractor is so arranged as to self-guiding that it will plow an endless distance without a guide. "It will follow a furrow from here to China," said A. A. Arnold.

The tractor is a three-wheeler and weighs 4,900 pounds. The French government has taken a great liking to this type of machine and has just ordered 1,500 of them. The company is now loading and shipping the 1,500 machines in installments. The French use them for plowing. With most of the men at the front in the trenches, the few men at home

are operating Bull tractors and going from farm to farm with them doing the plowing. Farmers register with the government to have their plowing done, and the plowman with his tractor gets around to the various farms as fast as he can.

Avery Standardizes Five Sizes of Its Tractors

The Avery Kerosene tractors are made in a standardized design. The Avery people believe they have found the last word in tractor making, so they have standardized their make, and are making the same type of tractor in five different sizes. The designs are exactly identical. Farmers may look over the three sizes and pick the one best suited to their all-round needs, according to the size and nature of their farms.

This tractor has a removable inner cylinder wall, which is especially hardened and tempered to do its work and give its service. By making this separate inner wall, it was possible to give it a better temper than it would be possible to give the entire cylinder. When the cylinder wall becomes worn, all that has to be done is to get a new inner wall, insert this and go ahead. The crank shaft of this tractor is also a feature, for the Avery people hold that no owner of an Avery ever broke a crank shaft.

Here is a Radiator Not Injured by Freezing

A radiator so constructed as not to be damaged by freezing and at the same time to give the greatest cooling efficiency is the Perfex radiator demonstrated at the Fremont power farming demonstration. The core has a slit at the top and bottom of the air fanage, which gives it a large flexibility and prevents damage from freezing. The manufacturers claim for this radiator no boiling and no evaporation. No radiator is stronger than its core and no core is stronger than its joints, the manufacturers of Perfex hold, and they point with pride to the strength of core and joints in this one. The slit mentioned above is placed there to allow for expansion and contraction.

A contest is on at the Perfex booth. A Ford car is to be given away in this contest at the close of the show. Visitors at the booth register their names and thus get a chance at the Ford.

New Tractor Tears Up Soil Instead of Packing It

With great claws on the drive wheels like the claws of a chicken, the Fageol tractor, one of the newer designs, is attracting considerable attention on account of the oddity of its appearance and on account of its diminutive size. "The smallest tractor in captivity" is what its boosters are calling it. With those terrible claws it has a wonderful drawing power. "Those claws agitate the soil instead of packing it," said the dem-

HEAD OF PHENIX TRUCKS VISITS TRACTOR SHOW.



MR. R. D. OWINGS

The standing of Nebraska as a field for trucks and tractors is being evidenced by the list of manufacturers who have attended the Fremont Tractor show.

Mr. R. D. Owings, president of the Phenix Truck Makers, Inc., has arrived to have a hand, personally, in the organization work in Nebraska. The Phenix people have recently closed a large contract with the C. W. Francis Truck company of Omaha.

"Too many tractors pack the soil and tend to make it hard. There is much complaint on that point. This is one of the things tractors must get away from, and we feel that we have got away from it. The Fageol tractor weighs only 1,750 pounds. Small but mighty, it draws a two-gang plow and attracts its crowds of spectators.

Grading Camp Cook Held For Violation of Mann Act

Paul White, a cook employed by a Union Pacific grading gang, was arrested by the federal authorities for violation of the Mann act. Mrs. Minnie Briscoe, formerly of Blue Rapids, Kan., is the complaining witness. She says he took her from Iowa to Wyoming and represented that she was his wife, threatening to kill her if she revealed their relations. She worked as assistant cook with the grading gangs. She is a dozen years older than he.

Persistent Advertising Is the Road to Success.

Bates' Steel Mule Again On the Job at Fremont

The Bates Steel Mule is on the job again at the Fremont Tractor show. The company is showing three tractors this year. One of them is

a new type with two crawlers and two front wheels. It is equipped to make very short turns, and it will lug three fourteen-inch plows through heavy soil and have some power to spare. Cast iron has been eliminated. Nickel steel shafting is used. Hard cut gears and Hyatt roller bearings are a feature.

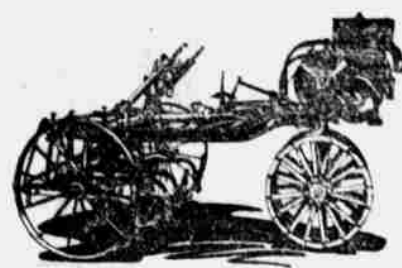
The other two Steel Mules shown are made with extension control, so that a man may sit on a plow or harvester and control that and his tractor from one seat. These will draw three fourteen-inch plows.

for driving any three-wheel, four-wheel, or crawler tractor from the seat of an implement," said Harry Bates. "Our double crawler is made for hillside work or orchard work. Our sales this year thus far ran three times what they were last year to date."

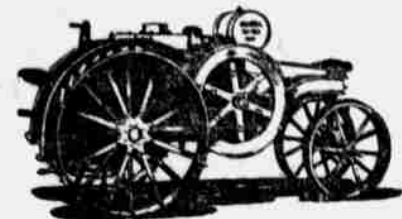
New International Harvester Products

to be seen at the

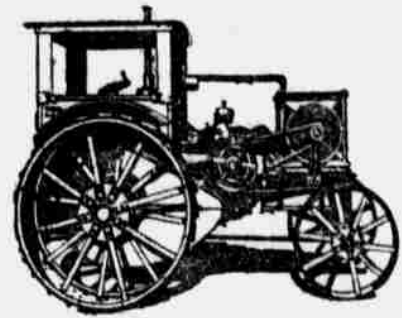
1917 Fremont Tractor Demonstration



International Motor Cultivator



Mogul 10-20-H. P.



Titan 15-30-H. P.

A REMARKABLY efficient new motor cultivator and two new kerosene tractors, Mogul 10-20 and Titan 15-30, make up the International Harvester showing of 1917 models at the Fremont demonstration this year.

The International Motor Cultivator is an entirely new departure. It consists of a motor attached to the frame of a two-rowed pivot axle cultivator. While cultivating, the operator does not have to watch the engine. The machine is steered by the movement of the operator's feet in the ordinary cultivation of the corn. The motor drive wheels at the rear of the gangs are locked in a straight-ahead position while the machine is going down the field. At the end of the row the driver disengages the lock, turns the motor wheels to right or left, as desired, and the entire machine pivots on one cultivator wheel, turning within its own length, to resume its course down the next two rows.

By raising the cultivator teeth, this machine can be used as a power plant for most field work requiring not more than four good horses. To see the International motor cultivator in action is worth a trip to Fremont. Don't miss it.

The Mogul 10-20 is a later development of Mogul 8-16, the two-plow kerosene outfit which made the hit of the year in 1916. The 10-20 is the three-plow size of this model and has two ploughing speeds.

The Titan, 15-30, a four-plow tractor much improved on last year's model, is the size and type for farms where the fields are large and the belt work consists of running good sized machines, such as threshers and huskers and shredders. This tractor is a desirable threshing engine because it runs so steadily on variable loads.

The full line of International Harvester kerosene tractors to be shown at Fremont this year includes the Mogul in 8-16, 10-20 and 12-25-H. P. sizes, and the Titan 10-20 and 15-30-H. P. sizes.

Other International Harvester products which will be on exhibition at headquarters or in the field are the International motor cultivator, Deering and McCormick corn pickers, Low Corn King, Low Cloverleaf, and Low 20th Century manure spreaders, and a very complete line of efficient tillage implements.

Every farmer who attends this demonstration is cordially invited to visit the International headquarters tent. Representatives will answer all your questions and see that you get full information about any machine in which you may be interested.

International Harvester Company of America

(Incorporated)

Omaha Concordia Council Bluffs Crawford Lincoln Sioux City St. Joseph Topeka

MAXWELL

Most Miles per Gallon

Most Miles on Tires

When 1092 cars of the same make average 27.15 miles on one gallon each

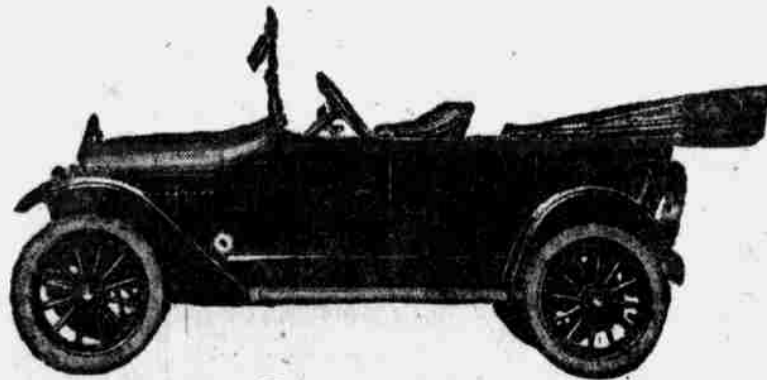
—when 2040 cars of the same make average 29.04 on one gallon each

—that car must be mechanically right.

The figures cited are the certified scores piled up in the historic Maxwell gasoline economy contests of May and June.

They were made by privately owned Maxwell cars in actual daily use by the purchasers.

Only the highest standard of efficiency in engine, clutch, transmission—every mechanical detail—permitted the achievement of such results.



Touring Car \$745

Roadster \$745; Town Car \$1095; Sedan \$1095. All prices f. o. b. Detroit

Midwest Motor & Supply Co.

Distributors

2216-18 Farnam St. Omaha, Neb. Phone Tyler 2462

LINK-BELT ROLLER CHAIN



The Standard of Quality for Driving Tractors and Trucks

LINK-BELT "TT" Roller Chain illustrated is an established standard of the highest quality, for that all-important service of transmitting power to the driving wheels of the tractor. It is designed and made to withstand the severest service, and the most difficult conditions under which any tractor can be called upon to operate. It is made in the largest chain plant in the world, by skilled workmen, with every modern facility to secure perfection. We have been chain makers for over 43 years—our "TT" Roller Chain is one of the results of our experience. From raw material to finished product, every operation passes the most rigid inspection. Every foot of Link-Belt Roller Chain is Guaranteed. That is why we put our trademark on every link. Look for it—demand it! The illustration shows Link-Belt, "TT" Roller Chain on the International Harvester Co's Mogul. Write to us for our recommendations, prices and deliveries.

Call at our booth at the Fremont Tractor Demonstration and see the many various types of Link-Belt and Roller Chains used on tractors and farm implements.

LINK-BELT COMPANY PHILADELPHIA CHICAGO INDIANAPOLIS

BRANCH OFFICES IN PRINCIPAL CITIES



This Trademark Identifies Genuine Link-Belt

International Harvester Company's Mogul Tractor driven through Link-Belt Roller Chain.

