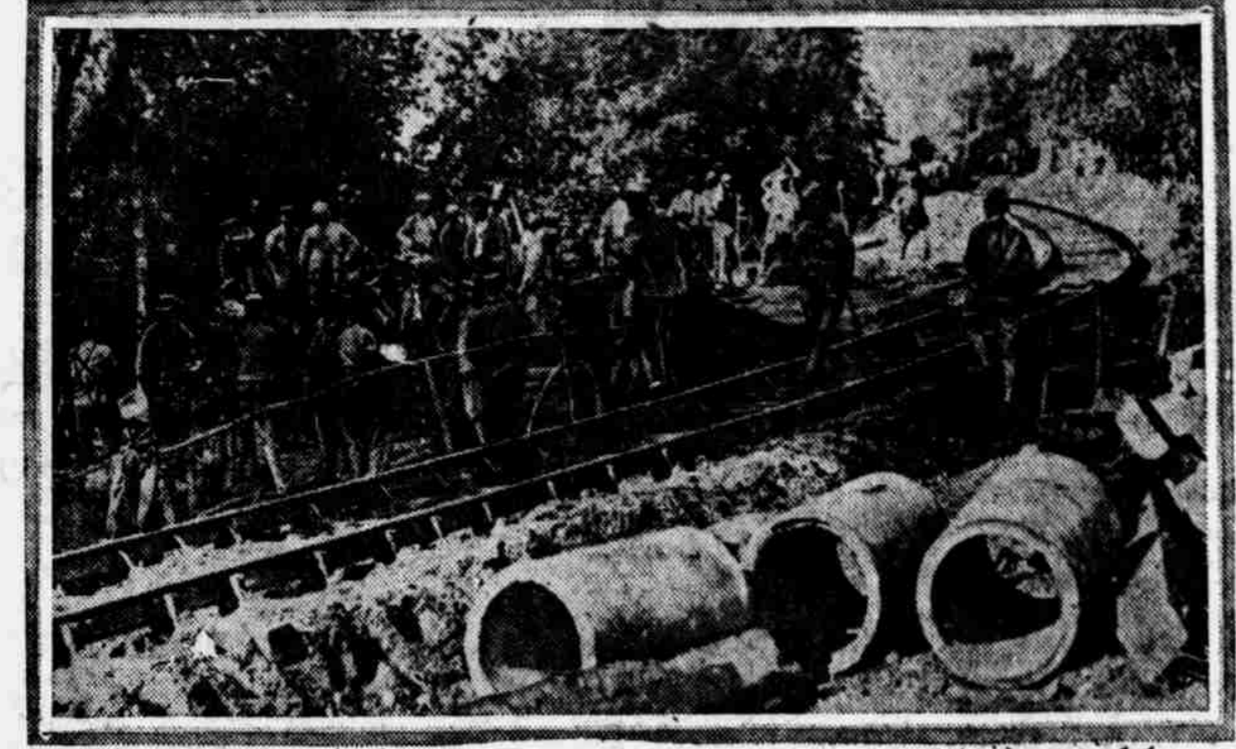


PERSONAL

WANTED—To locate Clifford M. Beebe, who is a young man in Omaha. Mr. Beebe or his daughter can obtain information as to his whereabouts by communicating with the undersigned. Any person having information as to the whereabouts of Clifford M. Beebe is requested to address GUDGE, ROBINSON & HUGHES, attorneys, investment building, Los Angeles, California.

BUILDING A TRENCH RAILWAY IN FRANCE—Behind the lines in every offensive are waiting the thousands of engineers, skilled workmen and ordinary laborers, prepared to undertake the task of making passable reconquered territory and destroyed roads and railroads. Every advance means new trenches constructed or reconstructed in advanced territory, and every trench must have railways operating within a convenient distance of it in order that supplies and ammunition may be brought up as speedily as possible. The men in the photograph are shown building such a railway line leading to new trenches of the French on the western front.



French Official Photo.

Horses—Live Stock—Vehicles

HORSES BUILT TO WORK—Have another good horse ready to sell. If you want horses in good condition and ready to harness and work, see them first hand, at 424 and 426 Douglas St. Harney St. R. Grotto, 105 City Hall.

POULTRY AND PET STOCK

Martin strain White Wyandotte laying hens, also mated pairs. Price winning stock reasonable. Hans Jurgensen, Overton, Neb. BARNEUX mated pigeons for sale cheap. South 26th.

MONEY TO LOAN

FURNITURE, piano and notes as security. \$40, 4 mo. end, total cost, \$20. \$40, 6 mo. end, total cost, \$20. \$40, 6 mo. end, total cost, \$20. \$40, 6 mo. end, total cost, \$20.

OMAHA GENERAL MARKET

Butter—Fresh, up to 3.00 lb. 23c. Eggs—No. 1 fresh, \$1.85 case; No. 2, \$1.70 case; cracked, \$1.50 case. Shipping by freight, mark B-L "Regis" etc.

BEHIND THE LINES.

LIVE STOCK MARKET

Slump in Beef Steers for the Week of Twenty-Five Cents to a Dollar; Hogs Are Some Higher.

Table with columns for Receipts, Cattle, Hogs, Sheep, and various market prices.

RECEIPTS—CARS

Table showing receipts for Cattle, Hogs, and Sheep.

DISPOSITION—HEAD

Table showing disposition for Cattle, Hogs, and Sheep.

Cattle—This week in the cattle trade has been one of the worst experienced in a good while. Demand has been poor for good beef, and the market has been heavy with choice and some traders are quoting yearlings, and on these kinds there has been a heavy bid, but the market is not quotable as high as \$12.75. Outside the choice class, however, there has been a heavy bid, and the market is not quotable as high as \$12.75.

NEW YORK STOCKS

Short Covering Again Paramount Influence in Day's Light Operations on 'Change.

New York, July 28.—Professional traders had the field to themselves in this week's negligible dealings, which incidentally has marked the third anniversary of the war.

Unfavorable crop news from North Dakota and western Canada increased bullish sentiment regarding wheat. The chief other bullish factor aside from the indirect influence of the strike was the prospect of changed conditions in that industry. General trade is reported to be satisfactory, but authorities here believe that the prospect of the undertone of conservatism, due to uncertain government regulations, is the paramount factor in the market.

CHICAGO GRAIN AND PROVISIONS

All Around Advances Noted in Prices Due to Strike Anxiety.

Chicago, July 28.—Anxiety over shipping complications due to the switchmen's strike did a good deal today to cause an all-around advance in values of grain and provisions.

Disturbing effects of the strike manifested themselves, especially in the corn trade, where shorts made a general rush to cover and speculative buying was active. In addition to the strike, continued drought damage reports tended to lift prices. Complaints that injury had been rendered worse by extreme heat referred to a broad stretch that included much of Texas, Oklahoma, Kansas and Nebraska.

GRAIN AND PRODUCE

All of the Cereals on the Omaha Market Run Weak; Corn is in Strong Demand.

Omaha, July 28, 1917. The wheat market was dull with light arrivals but the cash corn situation was very strong and prices on this cereal advanced to new high levels.

The demand for wheat was very slow at the time of the market's early weakness, the better samples of hard winter selling fully from 15 to 20c under the quotations of the previous day. No. 2 hard selling today at \$2.70, while yesterday's sales of the same grade of wheat were made around \$2.55@2.60.

OMAHAN ENLISTS

ON TRANSPORT DUTY. Think He Was on U. S. Ships Taking Second Contingent to Europe; This Is Second Enlistment.

Elmer H. McCune, an Omaha boy, who two months ago made his second enlistment in the navy, is believed by Edwin L. Huntley, his uncle, to have been on one of the transports which carried the second American contingent of soldiers to France.

Armour Girls Supply the Soldiers With Fine Kits

Armour's hospital class is doing more than "sewing shirts for soldiers." They are making comfort kits for them. They have already made fifty and have started more.

St. Patrick's Parish to Have Field Meet at Rourke Park

A tug-boat, wrestling match and a musical program will feature the lawn social to be given Wednesday night by St. Patrick's parish at Rourke park.

Danish Singer and Composer Will Give Concert in Omaha

J. Saxtorph-Mikkelsen, noted singer and composer, is in the city visiting friends. Sunday afternoon he will give an open air concert at the home of Fred Brodegaard, where he will render some of the better known Danish folk songs.

Sheriff and Negro Both Killed in Chester Fight

Chester, Pa., July 29.—David Schwartz, a deputy sheriff, and an unidentified negro were shot and killed here late last night in a fight in the negro section.

Advertisement for \$100,000,000 Government of the Dominion of Canada. TWO-YEAR 5% GOLD NOTES. Dated August 1, 1917. Interest payable February 1 and August 1. Due August 1, 1919. Both principal and interest payable in United States gold coin in New York City, at the Agency of the Bank of Montreal. Coupon notes in denomination of \$1,000.

New York General Market. New York, July 28.—Flour—Eastern; spring patents, \$13.15@13.40; winter patents, \$13.00@13.15; winter straight, \$10.00@10.80; Kansas straight, \$13.15@13.40.

St. Louis Live Stock Market. St. Louis, July 28.—Cattle—Receipts, 1,000 head; market steady; native beef steers, \$7.50@11.50; yearling steers and heifers, \$5.00@11.50; stockers and feeders, \$5.00@9.50; prime southern beef steers, \$9.00@12.25; beef cows and calves, \$5.00@11.50; yearling steers and heifers, \$7.50@16.00; native calves, \$6.00@12.50.