



THE BEE'S SPECIAL LINCOLN HIGHWAY EDITION

## The Kearney Commercial Club

invites correspondence from persons or firms who are desirous of locating in a fast-growing community where farming is successful, home life ideal, school facilities unsurpassed and manufacturing made possible by the cheapest electric power in the state.

write for information

## Patterson and Company

Growers and Jobbers of  
**FIELD SEEDS**

Fancy Grades Alfalfa, Amber Cane, Millet, Sweet Corn Etc.

Samples and Prices on Application

**FORD CARS**  
**FORD SERVICE**

**PATTERSON MOTOR COMPANY**  
KEARNEY, NEB.

## HOTEL MIDWAY

Right on the  
**Highway**

A True Comfort  
Station For the  
**Tourist**

## Kearney is Midway Between Boston and San Francisco on the Lincoln Highway

Kearney is the county seat of Buffalo county, Nebraska, and is a prosperous city of approximately 8,000 people. It is on the Lincoln Highway midway between Boston and San Francisco. In the neighborhood of sixty trains daily are operated on the Union Pacific, K. and B. H. on C. B. & Q. in and out of the city. The streets of Kearney are broad and many of them are paved. The Lincoln Highway approach to the State Normal is said to be the most beautiful drive in the middle west. Kearney has a fine public library and an excellent system of public schools occupying seven brick and stone buildings. A state parochial school is located here as well as a military academy, state industrial school for boys, state tuberculosis hospital and the Kearney State Normal.

A canal eighteen miles long develops the power for cheap electric lights in the city. The industrial establishments include large flour mills, grain elevators, canning factory, brick works, foundry and machine shops, also natural and artificial ice plants, stock raising and feeding interests. Kearney has a fine five story opera house, department stores, two large five and ten cent stores, publishing houses, two daily newspapers, three banking houses, savings and loan association, wholesale houses, electrical lighting system, many beautiful homes and churches, a live commercial association.

**Near the Old Fort.**  
The main points of interest in and about Kearney are: Old Fort Kearney, new Platte River bridge, court house, "1733" ranch—the largest poultry farm in the country, Lake Kearney and the State institutions. Kearney is an educational center and a good place to like.

Kearney folks are now very much elated over the new North American hotel which will be completed by January 1st, 1918. The North American Hotel Co., in planning the very beautiful building which it is now erecting in Kearney has included many modern features. Social features of the highest character because it is realized that these features will be highly appreciated by the auto tourists and others who may stop in the city. The North American hotel

### Kearney

County seat of Buffalo county.  
Population, 8,000.  
Three railroads—Union Pacific, Burlington and Northwestern division of Union Pacific.  
Has a canal eighteen miles long, developing 3,000 horsepower for manufacturing purposes.  
Has large flour mills, grain elevators, an alfalfa mill, cigar factory, creamery, broom factory and foundry.  
Home of State Industrial School for Boys, State Normal school, with 1,500 students, and Kearney Military academy.  
Has a high school, six grade schools, twelve churches, and public library of 12,000 volumes.  
Has two public parks, a county fair association.  
Has twenty-seven miles of concrete sidewalks and paved streets.  
Owns its waterworks.

at Kearney, according to the information given out by the Omaha office of the firm which is handling its design and construction, is well under way. Shipments of steel and concrete have already been made and the ground has been prepared. Kearney will stand out as one of the most progressive cities of the country when this hotel is completed.

**To Transmit Power.**  
The Central Power company which now owns the hydro electric plants of the Kearney Water and Electric Power company, located at Kearney and will increase the capacity and connect same with the Central Power Loop river development at Boches, Neb., creating thereby a total hydro electric development of approximately 10,000 horse power, which together with the steam plants will increase the total to 20,000 horse power. All power plants of the company will be tied together by means of power transmission lines and power lines will be built from the Kearney properties to the smaller towns of Buffalo county and from these lines rural service will be supplied.

Buffalo county land, in general, is naturally adapted to irrigation and through the efforts of the Commercial club and the Central Power company,

will be given opportunities for intensified farming.

Buffalo county has but very little waste land and has a variety to suit the desires of almost any farmer no matter what crop he prefers to raise. A very large acreage borders the Platte, Loup and Wood rivers and is as rich as any soil in the world. This is the valley land, and the balance is table and hill land and has rich black loam top and clay subsoil.

**Value of the Soil.**  
Valley lands in the county around Kearney range in price from \$85 to \$135 per acre and the hill and table land ranges in price from \$35 to \$100 per acre.

Kearney is called the electric city of the west because of its excellent and profuse lighting system. Motor tourists passing through Kearney should make their plans so that they stop over here for a time. Auto repairs and supplies are supplied by concerns making this their business. If there is anything in the way of equipment that needs replacing or which you forgot to provide before starting you can get them at Kearney. The stores provide everything to be found in modern establishments at prices in line with Omaha and other points in the state.

### Kearney's New North American Hotel Truly Metropolitan In Character

The hotel building which is now being erected in this city by this company is to be of absolutely fireproof construction, and in its arrangements and appointments the very latest ideas in modern hotel building and operation are being provided. Including every modern feature such as telephone and hot and cold running water and private baths in guest rooms, vacuum cleaning and refrigeration machinery, elevators, etc., etc.



Architect's Drawing of 7-Story Hotel Building Now Under Construction at Kearney, Neb.  
BANKERS REALTY INVESTMENT COMPANY, ARCHITECTS AND BUILDERS.

### Social Features of this Hotel Building

Among other attractive features which this hotel will offer its guests will be the freedom of the social rooms on the second floor, which for their beauty and appointments will compare most favorably with the finest hotels in the country.

Here will be found the ball room, the tea room, private dining room, and a most elaborately furnished lounge room.

The restaurant and main dining room will be one of the finest in the west from the viewpoint of furnishings, cuisine and service.

Kearney's New Hotel which will be completed about January first, 1918, will be a most delightful place to break your journey whether it be for a few hours or several days

## KEARNEY--

One of Nebraska's most aristocratic cities, with its progressiveness fully manifested by mile after mile of exceptionally wide paved streets, uniquely lighted, and by myriads of beautiful homes and handsome business buildings with up-to-the-minute merchandise and merchandising methods, will be a pleasant revelation to the autoist who travels via the Lincoln Highway. And, fully in keeping with these conditions, this company is erecting here a modern hotel building which many a larger city would point to with pride—because of the modern appointments it will embody for the comfort and convenience of those who will seek shelter or pleasure beneath its roof.

In other words, Kearney, which is just a nice day's journey west of Omaha on the Lincoln Highway, will soon be able to provide an ideal ending for an ideal day's trip through one of the most productive agricultural valleys in the world—in that it will be able to offer hospitality of a most exceptionally pleasing character to the stranger who stops within its gate.

The North American Hotel at Kearney is one of a chain of modern hotels which is being established in the middle west at the present time by the

## North American Hotel Company (Inc.)



GENERAL OFFICES:  
Ground Floor Bee Building  
Omaha, Nebraska

## THE CITY NATIONAL BANK

KEARNEY NEB.

## The "Old Reliable" Bank Of Buffalo County

29 Years in Kearney  
Resources \$2,250,000.00

DAN MORRIS, President.

GEO. BURGERT, Vice President.

C. W. NORTON, Cashier.

F. W. TURNER, Assistant Cashier.

K. O. HOLMES, Chr. Board of Directors.

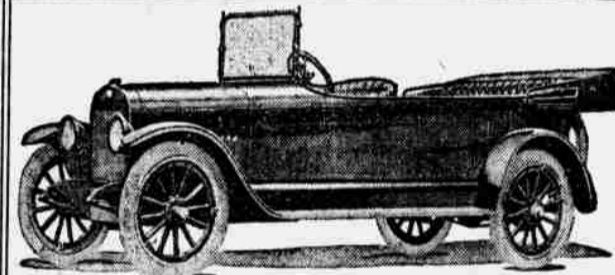
## IT WILL PAY YOU To Consider Us

When in Need of

Clothing--Furnishings  
And Shoes

**A. C. KILLIAN CLOTHING CO.**

Satisfaction or Your Money Back  
Kearney, Neb.



Distributors of Crow-Elkhart and Stephen-Six automobiles for Webster, Adams, Hall, Howard, Greeley, Valley, Sherman, Buffalo, Kearney, Franklin, Harlan, Phelps, Custer, Dawson, Gosper, Furnas, Red Willow, Frontier, Hitchcock, Logan, Lincoln, McPherson, Dundy, Chase, Perkins, Keith and Arthur Counties. Some of this territory is still available for sub-agents. Attractive proposition offered to right parties.

**MAY-LUNGER MOTOR CO.**

Phone 158. Kearney, Nebraska.



We Take Care of the Tourist



## MIDWAY GARAGE

Largest In The City  
ROY TONKINSON, PROP.

Just West of the Midway Hotel  
Right on the Highway



Everything for the Automobile

