

"I need your young men and your horses —And YOU must feed the world!"

THAT is the ringing call that your country and mine is sending forth from coast to coast. She needs our young men and our horses—and even today they are leaving the farms by hundreds of thousands. But you men and women and boys and girls who are left behind—every one of you can do as much for your country as any soldier. For if you fail to raise every bushel of food that your land will produce—if you neglect to plow and plant and harvest every acre of your land while the war lasts—our boys at the front and the millions of other boys who are fighting against the same enemy in Europe will be hungry and weak. Upon your work depends the safety of the American nation and every single one of her allies.

Your problem is a big one. For the country is looking to you to grow bigger crops than ever—with fewer men and fewer horses on every farm. Even now both horses and men are scarce and high priced. And who can tell where the end will be!

NOW—this very day—is the time to make ready for the task! This problem can be solved! In fact it has been solved. European countries are now farming almost exclusively with tractors—running them night and day, and making it possible for one man to raise as much food as three or four men can raise with horse labor.

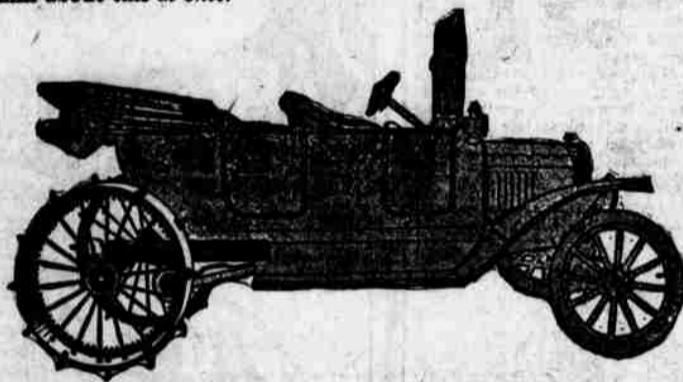
Buy a tractor of the right sort just as soon as you can get one. If you wait too long you will have neither horses nor tractor, for the demand for both is already far larger than the supply.

If you own a Ford roadster or touring car your problem is still simpler. For \$195 you can secure a STAUDE Mak-a-Tractor and convert your Ford into one of the most practical and efficient farm tractors that has ever been built. There is a dealer near you. See him about this at once!

STAUDE Mak-a-Tractor

\$195⁰⁰ and a Ford

4000 now in actual use! 150 being shipped daily!



REPLACES BOTH MEN AND HORSES!

The STAUDE Mak-a-Tractor is absolutely and unconditionally guaranteed to do the work of a 4-horse team—on the farm or on the road, provided you keep the Ford in good driving condition. It converts any Ford into a splendid tractor that can be driven by a boy or a woman as easily as by a man.

During rush seasons two drivers, working 12 hours each, will keep the STAUDE Mak-a-Tractor going 24 hours a day. And by this plan you can do as much plowing or other field work as three drivers with three 4-horse teams. Works just as well in dark as in daylight, as your headlights and rear light enable you to see perfectly for any kind of work at night.

Better still is the fact that the STAUDE Mak-a-Tractor will do the work of a 4-horse team—and it costs less

to operate than the feed for one horse. Average costs of plowing with STAUDE Mak-a-Tractors last year was under 1 1/2 gallons of gasoline per acre.

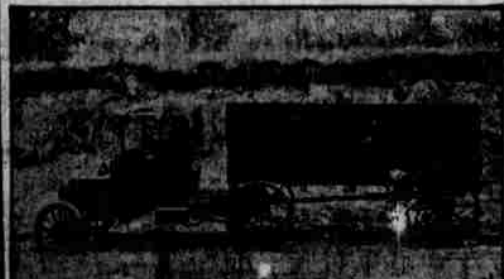
U. S. Government experts state that every horse requires 5 acres of average land to grow his oats and hay for the year. Thus by using a STAUDE Mak-a-Tractor in place of 4 horses on your farm, you will have 20 extra acres to grow food for our soldiers and the folks they leave behind them. And 3/4 of the money you get from these extra acres will be net profit to you! In fact it may be all net profit! For the STAUDE Mak-a-Tractor does the plowing, harrowing and planting in double-quick time—while soil conditions are just right. It will harvest the crops twice as fast, thereby beating bad weather conditions. And it should produce crops of a bigger cash value from your land, thereby making enough extra money to pay the entire cost.



Plowing 4 inches deep with two-bottom tractor gang plow in virgin soil. Will do this wherever 4 horses will do it. The STAUDE Mak-a-Tractor will plow on soft land where other tractors cannot move their own weight. Entire outfit weighs but 2200 pounds. Plows 2 to 7 acres per day—and will work all night if you let it. Has plowed 16 acres in 24 hours.



Pulling 16 section disc harrow. Will handle any disc that 4 horses can pull. Rides and steers easily over plowed land because spring action is free and car moves but 24 miles per hour. No waiting for engine repairs, as nearest Ford dealer is your service station.



You will appreciate the STAUDE Mak-a-Tractor if you have a long haul to market. For it will haul the biggest 4-horse load you ever saw—2 miles per hour—without stopping for rest, water or food. It never gets tired—slippery roads or sand have no effect—and our special radiator prevents the engine from overheating.

The Only Quick Way to Solve the Problem

Never before have we faced such a serious farming problem. Every effort is being made to send to the farms both men and boys who cannot be used at the front.

Most of these new farm recruits, however, know little about farm work. Their experience with horses is limited. But remember this—thousands of these city-bred men are experienced automobile drivers. They can take your Ford car and put it through farm work as well as you can.

We cannot grow more horses to meet this emergency—and the army must take many of those on hand now. Nor can manufacturers of heavy tractors take care of much increased American business.

But what of nearly a million Ford cars now in the hands of American farmers? Every one of them can cultivate and harvest as much land as three 4-horse teams. Every one of them will care you the crops from 20 acres—and furnish

20 extra acres of human food to the world. And every one of those Ford cars is ready to attach—right now—to a STAUDE Mak-a-Tractor and jump into the farm work.

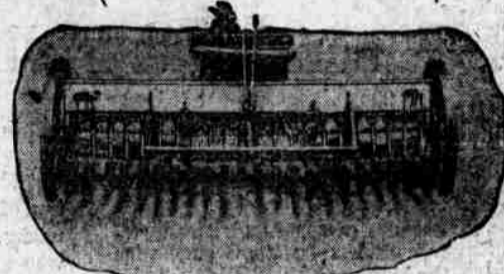
Bear these things in mind, however, in purchasing a STAUDE Mak-a-Tractor! It will do the work of 4 horses—and is sold under that guarantee. It will do this work just as long as you keep your Ford in good running condition. The only part of the outfit that ever needs adjustment or repairs is the Ford car itself—and there are Ford representatives everywhere.

Trial of the STAUDE Mak-a-Tractor on your own farm will convince you that your Ford car—properly adjusted for road work—will last twice as long at farm work because of slow driving speed.

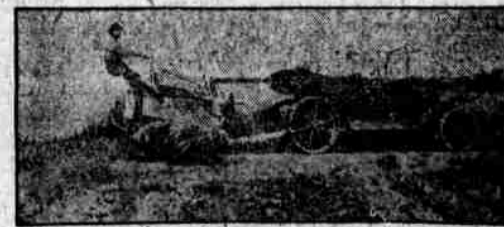
4,000 STAUDE Mak-a-Tractors now on farms. Daily output of factory is now 150. Dealers everywhere. We invite fullest investigation.

Dealers Attention!

At the present time we have over 500 dealers. We need 500 more at once to take care of business now coming in. Live automobiles and implement dealers write at once. Get ready for big drive in June! Orders now taken care of as fast as received. Don't delay getting in your stock this month.



Pulling 16 foot drill in heavy ground. Will handle corn planter or any planting rig with equal ease. Tractor wheels and axle carry all the load—pushing Ford ahead and pulling implement behind. Ford car does not pull a pound. By using two or three drivers in shifts you can get your seed into the ground in 1/2 the usual time. Get it all planted before the soil dries out or rain comes.



Cutting heavy oats with 2-foot binder. Flies, hot weather and heavy rock weight make this work terribly hard on horses, but the STAUDE Mak-a-Tractor laughs at it. It cuts the crop in a hurry—before it gets too ripe, or blows down.



This big 4-horse team cannot do anymore work than the STAUDE Mak-a-Tractor. They only work 100 full days a year. Yet they require 20 acres of your land to grow their hay and oats.

The STAUDE Mak-a-Tractor will run on what little horse costs for food—and do four times as much work in the same length of time. It never gets overheated—and never has to stop for rest.

The STAUDE Mak-a-Tractor will plow an inch deeper and travel 5 miles to their 4 miles. Cost of plowing with the STAUDE last year averaged less than 1 1/2 gallons of gasoline per acre.



Back on the road in 20 minutes after you are through working in the field. Simply disconnect the tractor axle from the frame and roll it away. Replace drive pinions with regular Ford rear wheels—and off you go.

E. G. STAUDE MFG. CO.

2603 University Avenue

St. Paul, Minn.

Prospective Dealers and Purchasers Write or Wire

M. B. RUTHERFORD, Distributor
Paxton Hotel, Omaha, Neb.