

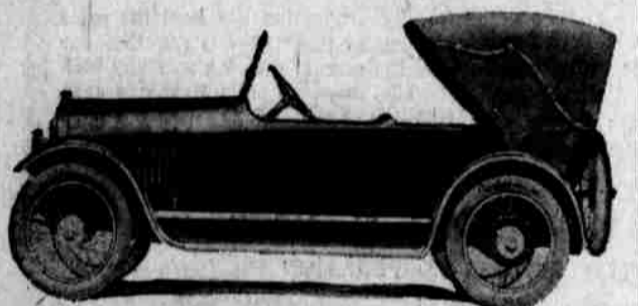
Motorcycle Fulfills All that Was Proclaimed for It Before the War



"The motorcycle has not only fulfilled, but exceeded, all expectations," says Captain Louis Keene, an English officer now in the United States on special detail, who brings with him the most comprehensive and valuable fund of information that has so far reached this country concerning motorcycles in European warfare.

is the contention of Captain Keene. When asked in the light of his actual experience what the biggest lesson is that America has to learn concerning the motorcycle in military service, he replied that "motorcycle service is war is not a circus or a carnival; it's a business, and a bloody business at that, and you have failed to grasp that idea. You could hardly be expected to understand it, for you have not seen blood spilt as yet."

King "Foursome" Victoria



When W. L. Killy, King distributor, says "She's some boat," you wonder whether he is enthusing about a submarine chaser or a Carter lake cruiser, but the next utterance, which dispels all doubt from one's mind, takes your thoughts far out of the war zone to a vision of hill climbing and triple carburetion. The so-called boat is the King Eight "Foursome."

It is a clever looking job and it sure does perform. Even if it does take time to "joy ride" the automobile editor it is sometimes necessary to prove one's claims.

Reserve power is the cardinal virtue of the "Foursome" and to prove it two demonstrations are being made which will be significant to Nebraskans familiar with Omaha hills.

From a standing start on the nearest railroad track at the bottom of the West Farnam hill, starting in "high," the "Foursome" climbs to the summit without a halt.

Next is the Capitol hill test, which was accomplished with little more trouble. Starting north on Twenty-

seventh avenue, turning into the middle of the hill and thence over the top in "high." These little tests are worth trying.

Another Plant Added to Allen Auto Community

With the organization of the Fostoria Press Steel company, Allendale, the Allen Motor company's automobile community is fast becoming a reality.

The Dale Body company's new plant is under construction and plans are being completed for the other factory units which will make up the Allendale community at the north end of Fostoria, O.

The Fostoria Press Steel company is incorporated at \$100,000 and will make all pressed steel parts required by the Allen Motor company. The officials of the new corporation are: Henry Rothrock, president; George

E. Kirk, vice president; E. C. Wolfe, secretary, and C. D. Pifer, treasurer and general manager. The plant will have 20,000 square feet of floor space and will be of fireproof brick construction.

Since the organization of the Allen Motor company in 1912 the several plants operated have been called upon for a greater and greater production. On account of the location of these factory buildings in the heart of Fostoria, further growth of the institution under the old conditions was made impossible.

Chinese Sheristopper, Vernon Ayau, the Chinese postman from Honolulu, is holding the short field position with the Seattle Northwestern league team.

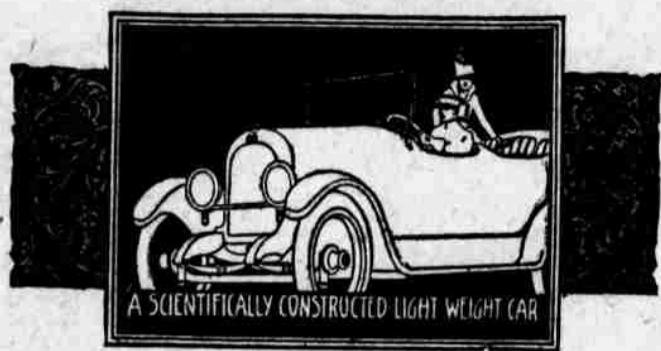
Bee Want Ads Produce Results.

Unusual Bargains in First Class Used Automobiles

- 1916 Chalmers 6-40 Touring Car —\$1050. Will Sacrifice.
- 1915 Chalmers 26-B Touring Car —\$1000. Brand New and in Perfect Condition.
- 1916 Paige "Big Six" Roadster —\$1000. Completely Overhauled and Repaired.
- 1916 Maxwell Touring Car —\$450. Good as New.
- 1916 Maxwell Touring Car —\$425. Completely Overhauled.
- 1914 Studebaker "Four" Touring Car —\$350. Everything Good.
- 1913 Overland Touring Car —\$350. Good Condition. Electric Starter and Lights.
- 1913 Chalmers "36" Touring Car —\$300. Completely Overhauled and Repaired.
- 1913 Studebaker "Four" Touring Car —\$200. Don't Overlook This One.
- 1914 Ford Touring Car —\$250. Good Condition New Motor.

Western Motor Car Co.
Omaha, Neb.
2054 Farnam St. Phone D. 4904

MARMON 34



LIGHT and Easy Riding The Desired Combination

Marmon's departure from old forms of construction is well exemplified by its pronounced simplicity and unrivaled light-weight. Fully equipped for travel, it weighs a half-ton less than comparable cars.

Pick out a rough road in this locality and drive the Marmon over it at any touring speed.

Even the heaviest of the major class cars cannot equal the comfort you will experience. Scientific construction, interpreted by the Marmon, includes the extensive use of aluminum, perfect balance, and elimination of many parts. The result is lightness and simplicity.

In the ordinary car such parts as the heel-board, running boards, and side-shields are extra parts—

dead parts. In the Marmon they are formed by structural parts; these structural parts are live working parts.

Light-weight and balance have so increased efficiency that Marmon 34 owners find it will average considerable more distance per gallon of fuel than cars of like size and power. In tire mileage owners also find it will exceed them from two to three thousand miles.

Will you consent to a demonstration, and designate the road?

Early Delivery Can Be Made

H. Pelton
2508 FARNAM ST.

Phone Douglas 1712

Liberty Man Secures Many New Orders in the West

E. J. Kilborn, sales manager of the Liberty Motor Car company of Detroit, spent Friday with W. M. Clement, distributor in this territory.

Mr. Kilborn was returning from a tour of the entire west and stated that his mission was merely to determine the feeling among distributors regarding the war. Distributors at California points and other places assured him that so far as they were able to see there was no let-up in business and gave Mr. Kilborn very satisfactory orders. When he left Omaha he had an additional order tucked in his pocket.

Mr. Kilborn advises that the Liberty Motor Car company had 765 unfilled orders. While this does not sound very large, as compared to the statement of some of the extremely large producers, in view of the fact that this is only the second year of the Liberty car, it is a remarkable showing.

Northwall to Handle The Big National Line

The announcement recently made by the T. G. Northwall company regarding the addition of the National line, a semi-high priced car, to its line of cars proves quite conclusively that there is no prevalent fear of a falling off in automobile buying. On the other hand, it is evidence that more cars can be sold.

The National "Highway" models are not new to this territory and need no introduction. The line this season consists of six and twelve-cylinder "jobs" in a four-passenger chummy roadster, a seven-passenger touring car and several closed cars.

The Northwall company will distribute the cars in Nebraska and western Iowa. Quite a large shipment of these is on the way to Omaha and is expected soon.

Buick Makes a Record Run Omaha to Chicago

Sam Valentine, who just recently purchased a Buick seven-passenger touring car, left Omaha last Thursday, driving to New York state, where he expects to travel north along the coast of Maine during the summer months, has kept a daily record of oil and gasoline. Mr. Valentine wires the Nebraska Buick Auto company that he drove his Buick from Omaha to Chicago through about thirty miles of mud roads in Iowa, the balance of the way good roads. His gasoline consumption averaged sixteen and one-fourth miles per gallon and oil consumption for the entire distance was the remarkable amount of one quart.

Look up "Lee Tires" in Phone book - 5,000 miles guaranteed

LEE PUNCTURE PROOF TIRES
216-246 TREAD
PNEUMATIC

Lee Tire & Rubber Co., Cambridge, Pa. Manufacturers of Rubber Goods since 1893

Q. Why don't you use puncture proof tires?

A. Don't know anything about them.

Q. Do you want to overcome your annoying and costly tire punctures?

A. Foolish question with no number.

Q. Would it appear foolish to you if I told you you can get tires today that overcome all puncture possibilities of the ordinary make of tires you are using, and, figured out on a strict cost basis, that the saving in time alone would more than make up for any first cost difference?

A. The way I feel just now I'd give anything for a tire that would withstand such nails as I have picked up.

Q. Will you be convinced when I tell you that I've been in your predicament, that I've doubted, but that I know what I'm talking about when I say that Lee Tires will guard you against those road delays? I feel you will, and for the fullest information I'll direct you to

Lee Standard Tires
Give more tire comfort and mileage than ever before claimed for any standard make of tires.

Lee Tubes
Always stand up to abuse, thickness and ruggedness. They are extremely supple, tough, resilient and long wearing.

2051 Farnam St. Phone Doug. 921.

POWELL SUPPLY COMPANY OMAHA

Capitol Garage
MYERS AND KLINGER, Props.
PHONES—Douglas 5202 and Douglas 1145. 1407-21 Capitol Ave.

Auto Storage
TWO MINUTES FROM ANYWHERE

Secure protection for your car in the new fire-proof garage. Parkage for 125 cars. We carry high grade oils, gas and supplies in stock. Washing and polishing our specialty. Special attention to transients. Inquire about our special monthly day storage rate.



The Studebaker SIX What You Get for Your Money

WHEN you buy a Studebaker SIX, you get the best work of one of the largest automobile manufacturers in the industry.

You get a car which has been perfected by four years' experience with the same basic design. Each year improvements and refinements have made it a still better car.

These improvements and refinements are based on the experience of 300,000 Studebaker cars in the hands of owners in all parts of the world.

The Studebaker SIX is not an experiment—it is an evolution.

The Studebaker SIX is made of carefully selected materials developed, perfected and tested in the great Studebaker laboratories.

The workmanship in Studebaker cars is experienced, painstaking and carefully supervised. The inspections are rigid and exacting in the extreme.

What is true of the Studebaker SIX is also true of the Studebaker FOUR. Both cars are of the same basic design. Many of their parts are interchangeable—that is why it is possible for Stude-

baker to offer so good a car at so low a price. The quality of Studebaker cars is evident in their finish and equipment.

Studebaker bodies are obviously substantial in construction. The crowned fenders are of heavy gauge steel.

The paint and varnish work is excellent. The upholstery is not only genuine leather, but high grade genuine leather. The cushions are soft and comfortable. The auxiliary seats are folding armchairs. The front seats are adjustable, and the right hand one reversible.

But the real proof of quality is durability. Studebaker cars stand up and give long, continuous service under the hardest usage.

Studebaker cars are guaranteed by the manufacturer for one year against defective workmanship and material. When you buy a Studebaker you get proved quality, proved economy and the guarantee of a great manufacturer.

Let us demonstrate to you the many points of Studebaker quality and economy.

Studebaker-Wilson, Inc.
Farnam Street and 25th Avenue OMAHA, NEB.

Four-Cylinder Models	Price
FOUR Roadster	\$965
FOUR Touring Car	\$985
FOUR Landau Roadster	1150
FOUR Every-Weather Car	1185

All prices f. o. b. Detroit

Six-Cylinder Models	Price
SIX Roadster	\$1250
SIX Touring Car	1250
SIX Landau Roadster	1350
SIX Touring/Sedan	1700
SIX Coupe	1750
SIX Limousine	2400

All prices f. o. b. Detroit