

### What Women Are Doing in the World

#### CLUB CALENDAR

**Monday—**  
 Omaha Woman's club, political and social science department, Metropolitan club house, 2:30 p. m.  
 League for Woman's Service, First National Bank building headquarters, 10 a. m.  
 Chautauqua Circle, Tennyson chapter, public library, 2:30 p. m.  
 Convalescent Aid society, welfare board rooms, city hall, 10 a. m.  
 Dundee Catholic Circle, Mrs. A. G. Jaeger, hostess, 2 p. m.  
**Tuesday—**  
 Business Woman's Council, court-house, 11-2 p. m.  
 Business Woman's club, Young Women's Christian association, 7 p. m.  
 Omaha Woman's club, oratory department, 10 a. m.; philosophy and ethics, 1:30 p. m., and current topics, Mrs. August Specht, hostess, 2:30 p. m.  
 Custer Woman's Relief Corps, Memorial hall, 2 p. m.  
 North Side Mothers' club, Mrs. George Yoder, hostess, 1:30 p. m.  
 Study of Music club, Mrs. Joseph Bushman, hostess, 2:30 p. m.  
**Wednesday—**  
 Dundee Woman's club, Mrs. N. K. Sype, hostess, 2:30 p. m.  
 Association of Collegiate Alumnae, story tellers' section; Miss Elizabeth Charlton, hostess, 4 p. m.  
 Omaha Woman's Press club, Hotel Loyal, 12:45 p. m.  
 W. C. T. U., Frances Willard union; Mrs. J. S. Cain, jr., hostess, 2 p. m.  
 Mu Sigma club, Mrs. W. J. Hotz, hostess, 2:30 p. m.  
 W. C. T. U., Omaha union, Room 316, Y. M. C. A., 2:30 p. m.  
**Thursday—**  
 Wyche Story Tellers' league, library, 4:15 p. m.  
 Benson Woman's club, Benson city hall, 2:30 p. m.  
 Omaha Woman's club, art department, 10 a. m.; music, 2:30 p. m.  
 Association of Collegiate Alumnae, drama section; Mrs. William R. King, hostess, 4 p. m.  
 Fine Arts society, board meeting, Fontenelle, 10 a. m.  
 J. F. W. club, Mrs. C. J. Hubbard, hostess, 2:30 p. m.  
 O. E. S., Vesta chapter Kensington club, Mrs. B. E. Marti, hostess.  
 Equal Franchise society, patriotic meeting, Blackstone, 4 p. m.  
 Daughters of American Revolution, Omaha chapter, Mrs. Anna Metcalf, hostess, 2:30 p. m.  
 P. E. O. sisterhood, Chapter B. P., Mrs. R. D. Ebright, hostess, 2 p. m.  
**Friday—**  
 Child Conservation league, North Side circle; Mrs. J. P. Sheeran, hostess, 2 p. m.  
 Society of American Widows, Mrs. B. C. Turpin, hostess, 8 p. m.  
 C. O. Story Tellers' league, Miss Isabel Graham, hostess, 7:30 p. m.  
 Suffrage school, courthouse, 8 p. m.  
 West Omaha Mothers' Culture club, Mrs. R. C. Dozier, hostess, 2:30 p. m.  
 W. C. T. U., Benson union; Mrs. E. G. Whistler, hostess, 2:30 p. m.  
 Scottish Rite Woman's club, Scottish Rite Cathedral, 2 p. m.  
**Saturday—**  
 P. E. O. Sisterhood, Chapter M; Mrs. G. F. French, hostess, 2:30 p. m.  
 Daughters of American Revolution, Major Isaac Sadler Chapter; Mrs. A. V. Drescher, hostess, 2:30 p. m.

**E**ASTER-TIDE, harbinger usually of the closing club year in all women's organizations, this spring will bring no surcease from club duties, for clubwomen will engage themselves more deeply than ever in whatever service they can give our country. The National League for Woman's service, the Red Cross chapter in process of organization, with its Red Cross auxiliaries and war relief benefits cast a serious air over women's activities, more than wont.

Annual meetings with their reports and elections are general this month and next, together with social affairs, which emphasize the sisterly feeling generated by a year's close association in work along welfare lines.

Of special interest later in the month will be an educational campaign conducted by Presbyterian women's missionary organizations at the North Presbyterian church, Twenty-fourth and Binney streets, April 19-22. Mrs. D. B. Wells of Chicago, Mrs. E. H. Silverhorn of Denver and Mrs. Guy H. Davis, a missionary, are the chief speakers. The plan to be pursued is somewhat the same as the Summer School of Missions, which was conducted for several years at the Omaha university, including morning classes, where normal class work, methods and problems will be discussed; afternoon given up to popular presentation of Latin America, and evening session filled with informational and inspirational addresses. The last night of the campaign there will be a large dinner and mass meeting at the fine new First Presbyterian church.

The local committee in charge is headed by Mrs. D. W. Merrow and includes Mesdames A. T. Sidwell, D. L. Johnston, Martin Oberst, Blaine Truesdell, P. M. Conklin, V. D. Benedict, George Thompson, J. M. Patton and Miss Fannie Adams.

Spring clean-up days, April 20-21, sponsored by the civics committee of the Omaha Woman's club, headed by Miss Katherine Worley, and the annual election of officers, April 16, occupy the attention of the Omaha Woman's club. There is an effort being made to induce the city commissioners to set aside \$2,000 to help in the clean-up work.

Mrs. Mary I. Creigh, Mrs. L. J. Healey and Mrs. E. B. Ransom, continue to be named as likely candidates for the presidency to succeed Mrs. E. M. Siefert, but who the nominating committee's choice is, has not been divulged. That Mrs. E. B. Ransom, the recording secretary, will not consent to serve another term is news of the week.

Social affairs, luncheons and Kensingtons, with interchange of courtesies between the departments and elections of officers are a feature of the closing weeks of the club.

At the political and social science

department meeting Monday at 2:30 o'clock, a round table discussion of social problems in the schools will be led by Mrs. C. W. Hayes. Principals and teachers in the local schools have been invited to hear the program, which is in charge of Mrs. Howard J. Bailey. Mrs. W. P. Harford will talk on "Moral Influence of Modern Dress," and Dr. Abby Virginia Holmes will discuss the dress problem from a health standpoint. Election of officers will be held. The department's last meeting this year will be a luncheon two weeks hence.

Prepared speeches will be the lesson of the oratory department on Tuesday morning at 10 o'clock, to be followed by election of officers. The current topics department will enjoy a Kensington and musical at the home of Mrs. August Specht in the afternoon, to which the philosophy and ethics department members are also bidden.

Preceding this, however, the philosophy and ethics department will meet at 1:30 o'clock at Metropolitan club-house to elect officers.

Miss Adelaide Stebbins will lead the program of the art department Thursday morning at 10 o'clock, when the collapse of Venice and the Venice of today will be discussed. April 26 is the closing date of the art section.

For the first time in Omaha selections from "The Masked Ball" and "The Jewels of the Madonna" will be given by the music department at its final meeting Thursday afternoon. Mrs. Millie Ryan, who has charge of the program, will talk on "Can I Become a Singer?" Vocal selections will be given by Misses Ruth Gordon, Bertha Coffey, Zara Trovella and Fay Russell and Messrs. Harold Rosenberg, Carl Sibbert, W. E. Shafer and Louis Knettle, with accompaniments by Miss Allegra Fuller. Officers for next year will also be elected.

Vesta Chapter Kensington club, Order of the Eastern Star, will be entertained Thursday by Mrs. Ben F. Marti. Mrs. Joseph Lawrence and Miss Martha Graham will give readings; Miss Mildred House, piano numbers; Miss Gertrude Thiem, violin, and Mrs. C. O. Pickett, vocal selections. The hostess will be assisted by Miss Millie Milehage and Mesdames W. T. Springmyer, Thad Irwin, A. Waggoner, S. Sach, George Morris, Thomas Hamlin, W. K. Swisher, Frank Hughes, J. M. Snyder and John Furst of Norfolk.

Under the auspices of the Equal Franchise society Thursday afternoon at 4 o'clock at the Blackstone Mrs. E. W. Nash, ex-Senator Norris Brown and John L. Kennedy will make addresses on "Patriotism and Americanism." This is one of a series of programs that the Equal Franchise society has been giving this winter along educational lines. Mrs. J. H. Dumont has charge of the program and is arranging for patriotic music as well.

The executive board of the Equal Franchise society is formulating plans for war relief work in connection with the offer made by Mrs. Carrie Chapman Catt to President Wilson. A full membership meeting will be held just as soon as the plans are completed.

Women of the North Side Christian church will hold a food sale and bazaar at the grocery store of George Roff, 4420 North Twenty-fourth street, Saturday.

Chapter B. P. of the P. E. O. sisterhood will meet Tuesday at 2

o'clock at the home of Mrs. R. D. Ebright. Mrs. K. R. Ogden will have charge of the program on "The Child Conservation League."

Omaha chapter, Daughters of the American Revolution, will meet Tuesday at the home of Mrs. Anna Metcalf at 2:30 o'clock. Miss Lucila Allen will have charge of the musical program and will play the violin, while Mrs. A. I. Root will sing and Miss Henrietta Rees will play the piano.

A public card party to raise money for relief work will be given by the Custer Trio club at the Musicians' headquarters Thursday afternoon at 2:30 o'clock. Mrs. George Winship is chairman of the committee.

Rev. Oliver M. Keve of Walnut Hill Methodist church will lead the prayer meeting of the Business Women's Council Tuesday at the court house. Women of the Plymouth Congregational church will serve luncheon between the hours of 11 and 2.

The oratory department of the Omaha Woman's club will repeat the play, "The Piper's Pay," on the eve

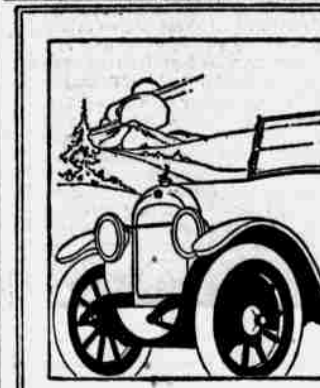
of April 18 at the Scottish Rite temple, for the entertainment of the Scottish Rite Woman's club and their families.

The Scottish Rite Woman's club will meet Friday afternoon at 2 o'clock at the Scottish Rite cathedral.

North Side Circle of the Child Conservation league will meet Friday afternoon with Mrs. J. P. Sheeran at 2 p. m.

Mrs. C. W. Hayes and Miss Esther Johnson will talk on juvenile court work Wednesday afternoon at 2 o'clock before the Frances Willard Woman's Christian Temperance union, at the home of Mrs. J. L. Cain, jr. Mrs. Frances Follansbee will have charge of the program and Mrs. Cain will give several vocal selections.

The Drama section of the Association of Collegiate Alumnae will meet Thursday at 4 o'clock at the home of Mrs. William R. King, who will be assisted by Miss Eulalia Adams. The play given will be "Post Scriptum" by Awer and the Misses Bess Dumont and Anna Lane will compose the cast.



**Six-43**  
 43 horse-power  
 actual brake test  
**\$ 1,395**

**Six-66**  
 66 horse-power  
 actual brake test  
**\$ 1,750**

The Moon car is designed to appeal to people who are distinguished from the masses by higher ideals—not necessarily by larger bank accounts.

It meets their requirements in looks, comfort and service. Its superb coachwork—exclusive upholstery and grace of design lend charm and beauty to its reliable mechanical construction.

*A few Moon features*

Red Seal Continental motors—Rayfield carburetors—long wheel base—Delco starting, lighting and igniting—one-man top—extra long springs—complete chassis and body equipment.

**MOON CARS**

**Toozer-Gerspacher Motor Co.**  
 2211-13 Farnam Street  
 Omaha, Neb.

We have some good territory open for responsible dealers in Nebraska, Western Iowa and Southwest South Dakota.

Press subject to advance without notice.

The Story Tellers' section will meet Wednesday with Miss Elizabeth Charlton at 4 o'clock. The Misses Hazel Howard and Esther Thomas will tell American stories and Miss Hazel Fry, a selected one.

Delegates from Council Bluffs, Grand Island, Norfolk and Omaha districts will be here for the Methodist Missionary jubilee, April 17, at the First Methodist church. Mrs. I. S. Leavitt will be home from California to preside at the meeting.

George A. Custer Relief corps will meet Tuesday at 2 o'clock at Memorial hall.

The West Omaha Mothers' Culture club will meet Friday at 2:30 p. m. at the home of Mrs. R. C. Dozier. Answer to roll call will be by quotations from the poets and authors studied during the afternoon. The program will consist of short sketches of the lives and examples of the productions of the following writers: Joseph Rodman Drake by Mrs. W. N. Baker; Fitzgibbon Halleck by Mrs. J. E. Duggan; Richard Henry Dana,

Mrs. J. A. Hamilton; Frances Scott Key, Mrs. C. B. Hutchinson; John Howard Payne, Mrs. J. P. O'Brien; Richard Henry Dana, jr., Mrs. C. B. Swan, and Harriet Beecher Stowe, Mrs. C. W. Keys.

Dorothy Canfield's "The Bent Twig" will be studied under the leadership of Mrs. G. C. Egerly Wednesday afternoon, when the Dundee Woman's club meets at the home of Mrs. N. K. Sype. Mrs. J. O. Yeiser, the president, will assist Mrs. Egerly and Mrs. F. I. Halstead will discuss current events. There will be one more meeting before the close of the year, at which election of officers will take place. Contrary to the usual custom of electing but two new officers, the others holding over, there will be a complete change this year, as all the officers are retiring.

Miss Kate Hungerford, leader of the program, will tell parts of the "Wonderful Adventures of Nils," when the C. O. Story Tellers' league meets Friday at 7:30 p. m. at the home of Miss Isabelle Graham. Miss Kate Swartzlander will tell a story

that may be dramatized and Miss Neva Shepherd an Arbor Day story.

The Wyche Story Tellers' League will meet Thursday afternoon at 4:15 o'clock at the library. Miss Margaret Delpech will be the leader and animal stories will be told.

The J. F. W. club will meet Thursday afternoon at 2:30 at the home of Mrs. C. J. Hubbard.

The Dundee Catholic circle will resume its card game, as well as the sewing, for the afternoon's occupation, when the club meets Monday between the hours of 2 and 5 at the home of Mrs. Arnold G. Jaeger. The cards were abandoned during Lent.

The Young Women's Hebrew association's expression class, of which Mrs. Effie Steen Kittelson is instructor, will give the program at a joint meeting of this organization with the Young Men's Hebrew association at the club rooms Tuesday evening. A hop, with other entertainment features, will be held at the club rooms tonight.

THE FRANKLIN CAR

Road Ability  
 Safety  
 Ease of Handling  
 Comfort  
 Operating Cost

All depend upon the weight of your car.

GET this question of weight settled before you decide on any car.

As far as light weight is concerned, we're not the only ones talking it.

Nearly all automobile people acknowledge light weight to be one of the biggest factors in the motor car world.

But we go further than merely acknowledging it; we back up our belief through the Franklin Car.

Note this: not one of the Franklin open cars weighs over 2280 pounds; not one of the Franklin enclosed cars weighs over 2620 pounds—on the scales.

Through this Scientific Light Weight—a Franklin principle for fifteen years—you, as an automobile buyer, can know in advance something more than purchase price. You can know about actual results.

For instance, you can get a clear idea of future operating cost—

Franklin Scientific Light Weight requires minimum gasoline to move it. (A gallon goes 20 miles, on an average).

The tires are protected from unnecessary pounding. (Franklin owners are averaging 10,000 miles to the set).

Destructive hammering on the mechanism is minimized. (Light weight saves repair bills.)

You can know what to expect in riding and driving qualities—

Tiring road shocks do not reach you; light weight eases the blow.

You get quick starting and stopping, almost effortless steering.

And as an investment—

Find a used Franklin and see what Scientific Light Weight does to hold down depreciation.

Of course, these are our own statements about Franklin Scientific Light Weight.

Prove what we say by checking our statements with the experience of Franklin owners.

**Franklin Motor Car Co.**  
 2205 Farnam Street. Phone Douglas 1712.  
 R-U-2-B-1-of-60

**PAIGE**  
 The Most Beautiful Car in America.

FOR family touring, to realize in fullest measure the pleasures and benefits of recreative driving during the out-of-door season now opening, the new seven-passenger Stratford "Six-51" offers you the supreme value among American motor cars.

Every feature and detail, usually found only in the most expensive cars, you will find in this roomy, powerful and sumptuous Stratford.

All of that Paige Beauty, Paige Stamina, Paige Mechanical Excellence, Paige Comfort and Ease of Driving you will find in the Stratford, because it is designed by the same engineers who design all Paige models—each for its requirements—"The Most Beautiful Car in America."

Stratford "Six-51" seven-passenger - \$1495 f. o. b. Detroit  
 Fairfield "Six-46" seven-passenger - \$1375 f. o. b. Detroit  
 Linwood "Six-39" five-passenger - \$1175 f. o. b. Detroit  
 Brooklands "Six-51" four-passenger - \$1695 f. o. b. Detroit  
 Dartmoor "Six-39" 2 or 3-passenger - \$1175 f. o. b. Detroit  
 Limousine "Six-51" seven-passenger - \$2750 f. o. b. Detroit  
 Sedan "Six-51" seven-passenger - \$2300 f. o. b. Detroit  
 Sedan "Six-39" five-passenger - \$1275 f. o. b. Detroit  
 Town Car "Six-51" seven-passenger - \$2750 f. o. b. Detroit

Paige-Detroit Motor Car Company, Detroit, Mich.  
**Murphy-O'Brien Auto Co.**  
 1214-18 Farnam Street OMAHA, NEB. Phone Tyler 123  
 Some Good Territory Available to Dealers

**\$350 for a Dearborn**  
 Which Attached to a Ford Chassis  
 Makes a Good One-Ton Truck.

**"That's Service"**

When people begin to make remarks like that about your business you may rest assured that you are on the high road to success. Satisfied customers mean success.

**DEARBORN SPEEDS DELIVERIES**

There is no longer any doubt about truck economy, and the surprisingly increased facilities for prompt service to customers which follow a truck purchase put it right up to the modern business man in unmistakable terms. "Will you modernize your business or will you fall behind your progressive competitors?"

**Brief Specifications**

Frame—The Dearborn frame is more rigidly braced than any other. Our jack shaft hangers and back rod hangers are hot-riveted to the Dearborn frame.  
 JACK SHAFT HANGERS—We have a separate headed shackle pin that holds the spring shackle on the strongest part of the hanger and another separate swivel pin that holds the radius arm swivel in place. We use the same size shackles on both the front and rear end of side springs and this equalizes the load on the springs.  
 REAR AXLE—is drop-forged and heat-treated. It is rectangular in shape, 2 1/4 by 1 3/4 in.  
 We use heavy duty Rock Roller Bearings and these bearings are used by such leaders as the Packard and Kelly-Springfield and G. M. C.

**JONES-OPPER CO.**  
 Omaha, Nebraska  
 Distributors Eastern and Northern Nebraska and Western Iowa

**A. H. JONES**  
 Hastings, Nebraska  
 Distributor Southern and Western Nebraska and Northwestern Kansas