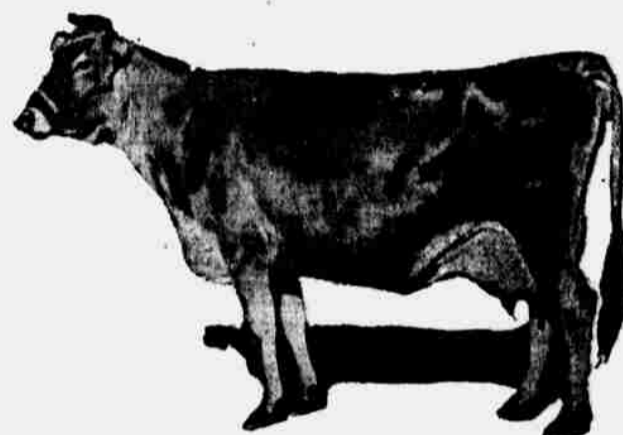


OPEN LAND TODAY

Come Today! If You Can't Come Today, Come Tomorrow! Don't Wait Until the Best Land Is Sold!



CHICKENS,

PIGS AND

A COW

and Garden Lots for Sale Ideally Situated for Raising Garden Products and Small Fruits

Whereby Everybody Can

H COST OF LIVING

the Rent Problem

arden, chickens, fruit, pigs, and a cow.

I ON YOUR OWN GROUND

Beans, Peas, Radishes, Lettuce, Cauliflower, Rhubarb, Berries, Currants and All Kinds of Small Fruits

S OF LAND

42.

ocation of the piece of ground purchased

h and 50c a Week

urchased. You may pay a larger amount if you desire. All be allowed for cash.

omaha and West Q street car. Get off at 43rd and Q Street, the southeast corner of this garden land. If Douglas 2596 or South 2447 and have our automobiles. We sell day and night on the ground. If you

R & COMPANY

ional Bank Building

s 2596 or South 2447

BUY YOUR GARDEN LAND
==TODAY==

BRING YOUR DOLLAR AND
SELECT YOUR GARDEN SITE

Ask any man what he could have done?

Ask any man what he did do?

Compare the man who made the investments with the man who waited to see how the other fellow's investment was going to come out. Buy garden land on the installment plan. Build a house on your garden land. Pay for it on the installment plan. When you pay rent you are paying for a house for your landlord. Don't keep your children from starting a foundation for a home. They may not need the garden land now. You did not need any garden land a few years ago.

The TIME to START the foundation for a home is

TODAY!

HOW TO REACH THE SALE

Take Any Car and Transfer to the South Omaha and West Q Car. Get Off at 43rd and Q Street, Salesmen Will Be There and Will Take You to the Sale, or You May Take the Ralston or Papillion Interurban Car and Get Off at 56th and Q Street, the Southeast Corner of This Garden Land.

Sale Is Going On NOW

Get Off Car

HERE

43d and Q Sts.



Car Line Q STREET

Car Line

26th St.

N St.

Car Line

TWENTY-FOURTH STREET

Car Line

Be Sure and Get Off the Car at 43d and Q--The End of the Line