

ENGINE HANDLES CHEAP GAS WELL

New Packard Twin Six Will Be Ready for Public Approval Soon

CARS ARE NOW ON WAY

The motor car will have opportunity within a few days to see and to be seen in its first class. The new Packard twin six car is being prepared for public approval soon. It is the most important car of the year and will be a real success. The car is being prepared for public approval soon. It is the most important car of the year and will be a real success. The car is being prepared for public approval soon. It is the most important car of the year and will be a real success.

Improvements Noted. Certain improvements have been made in the new car. The engine is more powerful and the car is more comfortable. The car is being prepared for public approval soon. It is the most important car of the year and will be a real success. The car is being prepared for public approval soon. It is the most important car of the year and will be a real success.

High test gas was used in the test. The car was driven for several days. The fuel consumption was very low. The car is being prepared for public approval soon. It is the most important car of the year and will be a real success. The car is being prepared for public approval soon. It is the most important car of the year and will be a real success.

Ross Eight Driver Pushes Car Over Lookout Mountain

With his high gear locked and a passenger in the car on the remarkable run, Casey Hamilton drove a Ross Eight car over Lookout Mountain, Colo.

This is a climb which is considered good when made on low gear. The Ross Eight carried seven passengers, with a total weight of 1,100 pounds. The Ross distributors laughed at predictions that this run would not be possible with such a weight car. They told motorists that the car would have no trouble. There is a point on the hill at which is located a truck house. This is one of the steepest points on the grade, and the Ross Eight went by there going twenty-six miles per hour. The average speed for the trip was twenty miles per hour. The driver took chances by using a number of stunts to show the remarkable flexibility of the motor and its quick getaway under exceptional circumstances.

Runs to Color Scheme. The Allen Motor car company seems to be devoting a considerable amount of attention to color schemes, says Carl Changstrom, local representative. The object prompting the remark is an exceptionally attractive piece of descriptive literature come-up in a color scheme.

An Effective Cough Treatment. One teaspoonful of Dr. King's New Discovery taken as directed will soothe the throat, break your cough and bring relief. All druggists—Advertisement.

Early Day Auto Was Crude Affair Compared to New

The motor car was a crude affair in its early days. It was a simple machine with a few basic components. The car was built with a wooden chassis and a simple engine. The car was a crude affair compared to the modern car of today. The car was a crude affair compared to the modern car of today. The car was a crude affair compared to the modern car of today.

The car was a crude affair compared to the modern car of today. The car was a crude affair compared to the modern car of today. The car was a crude affair compared to the modern car of today. The car was a crude affair compared to the modern car of today.

The car was a crude affair compared to the modern car of today. The car was a crude affair compared to the modern car of today. The car was a crude affair compared to the modern car of today. The car was a crude affair compared to the modern car of today.

Officer in Coast Guards Chooses the Studebaker

Remembering the work as a fleet of Studebaker cars in service for the U. S. Coast Guard, the U. S. Coast Guard officer who formerly was stationed in Porto Rico, recently bought a Studebaker in Baltimore. The Porto Rico officer operates a machine between San Juan and Ponce, a distance of 100 miles. Studebaker of this type have been used exclusively by the U. S. Coast Guard.

The fastest trip ever made from Oakland, Cal., to the Yosemite valley has been recorded by a Studebaker, piloted by H. D. Johnson, who made the 174-mile run in 8 hours and 44 minutes.

New Motor Company to Sell Ford Cars

The new motor company is to sell Ford cars. The company is a subsidiary of the Ford Motor Company. The company is to sell Ford cars. The company is a subsidiary of the Ford Motor Company. The company is to sell Ford cars. The company is a subsidiary of the Ford Motor Company.

The new motor company is to sell Ford cars. The company is a subsidiary of the Ford Motor Company. The company is to sell Ford cars. The company is a subsidiary of the Ford Motor Company. The company is to sell Ford cars. The company is a subsidiary of the Ford Motor Company.

The new motor company is to sell Ford cars. The company is a subsidiary of the Ford Motor Company. The company is to sell Ford cars. The company is a subsidiary of the Ford Motor Company. The company is to sell Ford cars. The company is a subsidiary of the Ford Motor Company.

Dixie Run Is Victory For United States Tires

The Dixie run is a victory for United States tires. The run was made by a car equipped with United States tires. The run was made by a car equipped with United States tires. The run was made by a car equipped with United States tires.

The Dixie run is a victory for United States tires. The run was made by a car equipped with United States tires. The run was made by a car equipped with United States tires. The run was made by a car equipped with United States tires.

Toozer Company to Exhibit at State Fair

The Toozer company is to exhibit at the state fair. The company is exhibiting a new car. The company is exhibiting a new car. The company is exhibiting a new car. The company is exhibiting a new car.

The Toozer company is to exhibit at the state fair. The company is exhibiting a new car. The company is exhibiting a new car. The company is exhibiting a new car. The company is exhibiting a new car.

The Toozer company is to exhibit at the state fair. The company is exhibiting a new car. The company is exhibiting a new car. The company is exhibiting a new car. The company is exhibiting a new car.

Test for Generator Can Be Made by Car Owner

The test for generator can be made by car owner. The test is simple and can be done at home. The test is simple and can be done at home. The test is simple and can be done at home.

The test for generator can be made by car owner. The test is simple and can be done at home. The test is simple and can be done at home. The test is simple and can be done at home.

Willard Special Announcement

If you haven't heard about our new free service plan for Willard Battery buyers, you're missing something good. Come in. Nebraska Storage Battery Co. Omaha. 2203 Farnam St. Phone D. 5102. Free inspection of any battery at any time.

The Willard battery is one of the best. It is reliable and long-lasting. It is reliable and long-lasting. It is reliable and long-lasting. It is reliable and long-lasting.

The Willard battery is one of the best. It is reliable and long-lasting. It is reliable and long-lasting. It is reliable and long-lasting. It is reliable and long-lasting.

The New Series Franklin Car

Here is the solution for motorists of America of a difficult mechanical problem that is engaging the attention of some of the world's greatest engineers today. The method by which the Franklin Company has eliminated in the Series 9 Franklin 400 pounds from an already scientific-light-weight car is an achievement that is five years in advance of current engineering practice.

Now that every informed motorist realizes how superfluous dead weight adds to expense, lessens safety and takes away from comfort, you are going to hear more about light-weight cars.

For 15 years, the principles of scientific-light-weight have been studied, developed and built into Franklin cars.

The achievement in weight elimination, marked by the New Series Franklin, is based on the knowledge of how to cut down the forces which wear out a car—not mere weight cutting.

Making the Franklin car resilient instead of rigid, is the reason for the Franklin always being the lightest car in its class—the cheapest to own and operate, the easiest, safest and most comfortable to run.

YET the man who is looking for an automobile which gives maximum service—and by maximum service we mean more comfort, more safety, more reliability and less cost of upkeep and depreciation—consider the facts: The Franklin car holds the world's record for tire economy and gasoline economy.

The New Series Franklin Car will deliver its motor 17 per cent. more tire economy and 10 per cent. more gasoline economy than the Franklin cars which established these world's records.

The Franklin car is acknowledged to be the easiest riding car in the world. The New Series Franklin Car is a smoother, easier riding, easier controlled car than any of its predecessors.

cover, rear axle gear case—150 aluminum parts in all. In the transmission gears is electric furnace nickel steel; in springs and axle shafts, electric furnace chrome-silico-manganese steel; in axle tubes and universal joints, 3 1/2 per cent. nickel steel.

Willard Special Announcement

If you haven't heard about our new free service plan for Willard Battery buyers, you're missing something good. Come in. Nebraska Storage Battery Co. Omaha. 2203 Farnam St. Phone D. 5102. Free inspection of any battery at any time.

The Willard battery is one of the best. It is reliable and long-lasting. It is reliable and long-lasting. It is reliable and long-lasting. It is reliable and long-lasting.

The Willard battery is one of the best. It is reliable and long-lasting. It is reliable and long-lasting. It is reliable and long-lasting. It is reliable and long-lasting.

The New Series Franklin Car

Here is the solution for motorists of America of a difficult mechanical problem that is engaging the attention of some of the world's greatest engineers today. The method by which the Franklin Company has eliminated in the Series 9 Franklin 400 pounds from an already scientific-light-weight car is an achievement that is five years in advance of current engineering practice.

Now that every informed motorist realizes how superfluous dead weight adds to expense, lessens safety and takes away from comfort, you are going to hear more about light-weight cars.

For 15 years, the principles of scientific-light-weight have been studied, developed and built into Franklin cars.

The achievement in weight elimination, marked by the New Series Franklin, is based on the knowledge of how to cut down the forces which wear out a car—not mere weight cutting.

Making the Franklin car resilient instead of rigid, is the reason for the Franklin always being the lightest car in its class—the cheapest to own and operate, the easiest, safest and most comfortable to run.

YET the man who is looking for an automobile which gives maximum service—and by maximum service we mean more comfort, more safety, more reliability and less cost of upkeep and depreciation—consider the facts: The Franklin car holds the world's record for tire economy and gasoline economy.

The New Series Franklin Car will deliver its motor 17 per cent. more tire economy and 10 per cent. more gasoline economy than the Franklin cars which established these world's records.

The Franklin car is acknowledged to be the easiest riding car in the world. The New Series Franklin Car is a smoother, easier riding, easier controlled car than any of its predecessors.

cover, rear axle gear case—150 aluminum parts in all. In the transmission gears is electric furnace nickel steel; in springs and axle shafts, electric furnace chrome-silico-manganese steel; in axle tubes and universal joints, 3 1/2 per cent. nickel steel.

Stearns
THE ULTIMATE CAR

HIGH SPEED

Whether Under the Hood or Over the Road Shortens the Life of Any Car.

The Stearns-Knight Motor, with its over-weight, counter-balanced crank shaft and its positively opened and closed sleeve parts permits of a medium high speed motor developing a continuous flow of power unimpeded by any other type of motor.

That's why a Stearns-Knight Motor will never be worn out.

McINTYRE AUTO CO.
2427 Farnam Street, Phone Douglas 2406, Omaha, Neb.

Knight
TYPE MOTOR

Overland

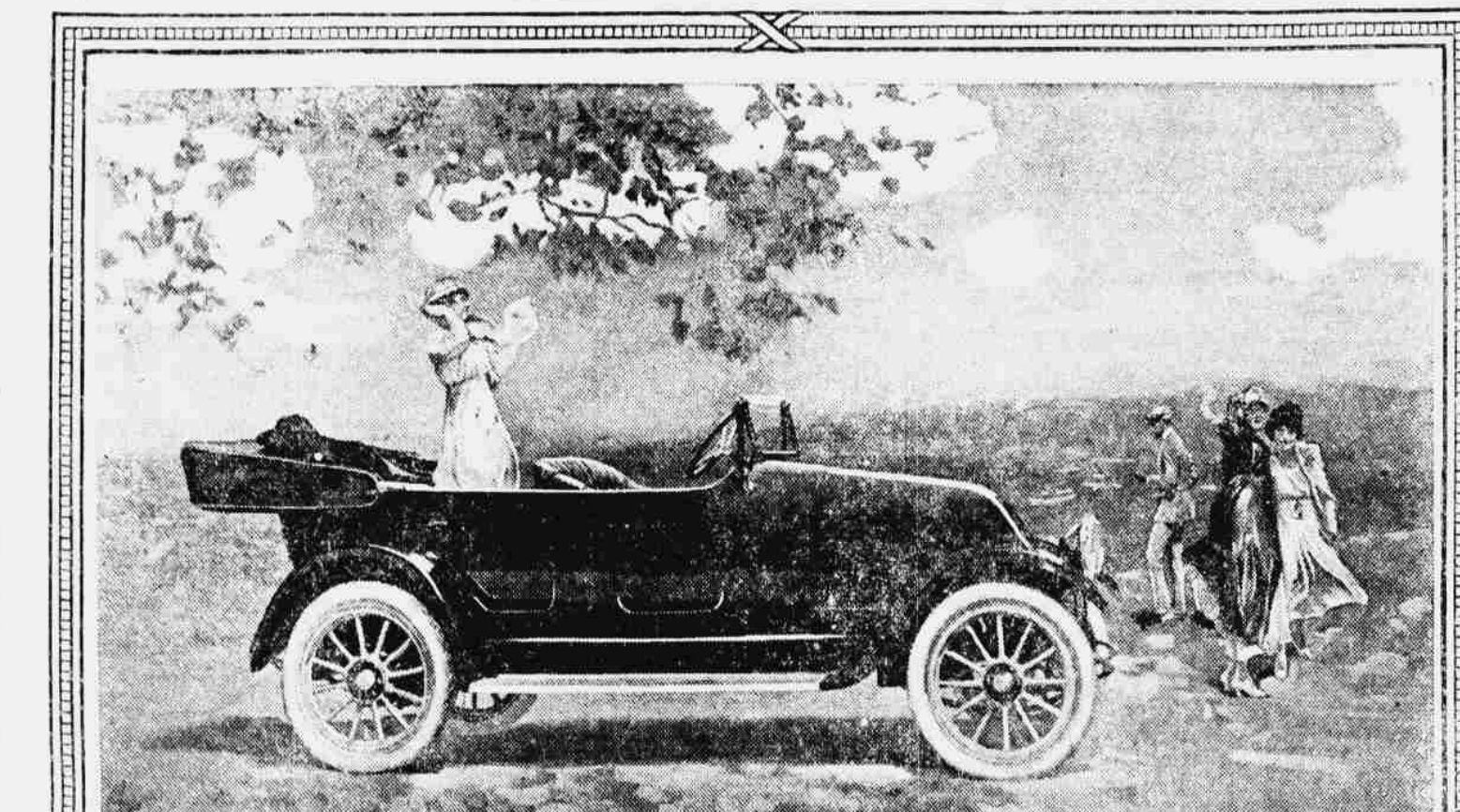
Phone Douglas 3280.

Willys-Overland, Inc.,
Omaha Branch

SALES ROOM
2043-47 Farnam St.

SERVICE STATION
20th and Harney Sts.

Willys
KNIGHT
SLEEVE-VALVE MOTOR



The New Series Franklin Car

Here is the solution for motorists of America of a difficult mechanical problem that is engaging the attention of some of the world's greatest engineers today. The method by which the Franklin Company has eliminated in the Series 9 Franklin 400 pounds from an already scientific-light-weight car is an achievement that is five years in advance of current engineering practice.

Now that every informed motorist realizes how superfluous dead weight adds to expense, lessens safety and takes away from comfort, you are going to hear more about light-weight cars.

HERE in the New Series Franklin is a full-size five-passenger car weighing only 2280 pounds.

How has it been done? Note the aluminum in body, mudguards, engine base, oil pan, transmission case and

You will be interested in seeing how a given amount of metal has been redistributed and a stronger part produced, or a less amount of metal used and a part equally strong produced.

The diminished weight—and particularly the diminished unsprung weight—means another increase in tire economy. Think of relieving the tires from direct pounding of unnecessary weight by making the front axle 30 per cent. lighter and the rear axle 25 per cent. lighter!

Then the reduction of friction! Ball bearings, the closest approach to frictionless mechanism, are used everywhere.

With all this weight saving and elimination of "dead" masses greater ability at less expense, more comfort, greater safety—a saving of trouble and dollars.

THE New Series Franklin incorporates all the established principles of Franklin construction: Six-cylinder direct-impulse engine; full-elliptic springs; front and rear wood chassis frame; flexible drive through the springs; large tires (cord type).

Built in eight types: Touring Car, \$1850; Runabout, \$1800; Four-passenger Roadster, \$1650; Cabriolet, \$2650; Sedan, \$2750; Brougham, \$2700; Limousine, \$3000; Town Car, \$3100.

An inspection of the car now on our salesroom floor will make these points plain. Driving it will open up a new conception of motoring pleasure.

Franklin Motor Car Co., 2205 Farnam Street
R-U-2-B-1 of 60? Demonstrations Are Free Phone Doug. 1712