

Farming Demonstrations is on at Fremont This Week

UPRIGHT KEROSENE ENGINE DOES WELL

Emerson-Brantingham Big Four Tractor Shows Its Merit at the Show.

IT PLOWS ALL THE LAND

"The Big Four tractor has proved that kerosene can be used most successfully in an upright engine," said John Glover, vice president of the Emerson-Brantingham Implement company at Fremont Tuesday. "By demonstrating this conclusively we believe we have gone a long way in easing the fuel situation so far as the tractor is concerned," continued Mr. Glover, "and we believe this will mean a great deal to the farmers for a long time to come."

"The Emerson-Brantingham Implement company has been making good farm machinery for a long time and we have made our own Emerson plows and our Big Four tractor to fit each other. Ours is a one-man outfit that plows all the land deep and cheap. We have an outfit that will plow all the land and there will be no more headlands and fence corners left unplowed. The power of the motor raises or lowers the plow whenever you push the lever, whether the tractor is moving or standing still. When the plows are raised you can back up a foot or a mile or go ahead as far as you like. The plows can be detached in a moment and the tractor is ready for any other kind of traction or belt work."

Mr. Glover was more than enthusiastic over the Fremont show. He said it was the best they had attended and the interest around the Emerson-Brantingham exhibit seemed to be all that could be desired.

Perhaps no exhibit no the grounds was more complete than that which the "Big Four" tent held. There was also a well developed interest in the performance of the Emerson-Brantingham machines in the field, which seemed to fulfill the claims of the manufacturers.

Bates Steel Mule Doesn't Mind Mud, Sand or Stone in Way

One of the exhibits at Fremont this week that is attracting its share of attention is the Bates Steel Mule. This is the machine W. J. Bryan picked to drive last year because of its apparent simplicity of operation.

"The other day," said E. E. Bates, "a keen farmer was watching a Bates Steel Mule in a field. He had seen it perform many times before—he had seen it plow, disc, drill, cultivate and harvest—he had seen it work on soil so wet a horse would sink over its fetlocks in gummy mud—he had seen it do all these things with only one man running both Mule and implement."

"At last he said, 'About the only thing it won't do is "Gid-up" when you say "Gid-up," but when you shoot a little juice in the carburetor you sure get action.'"

"That farmer told the whole story in a simple, definite way. In the hard ground at Hutchinson and at St. Louis our tractor did excellent work. In its demonstrations it has demonstrated that it can cultivate corn or cotton and do it with the implements now on the average farm. It is so constructed that it will operate in mud, sand or plowed ground and all the work is handled from the seat of the implement. It is truly a one-man outfit in every sense of the word and does the work of twenty mules."

Mr. Bates was particularly enthusiastic over the Fremont show and said it was all that the tractor men could ask in attendance and arrangement.

Light Allwork Is Machine That Has Made Good All Over

"We consider this Fremont demonstration the king of all tractor shows," was the expression of L. G. Hall, representing the Electric Wheel company of Quincy, Ill., at Fremont Tuesday.

"The paramount issue with the farmer today," said Mr. Hall, "is the light gas tractor. If it fulfills the claims that are made for it motor farming will be universal within a very few years. In our Light Allwork tractor we believe that we have a machine that comes close to perfection in this type of machine. We are extremely anxious to place our tractor in the field because at work it is our most efficient salesman. We have been designing and manufacturing tractors for ten years. We claim that experience in other lines of manufacturing counts for little in gas tractor building. They are a line to themselves and what the buyer is interested in knowing is that the experimenting has been done before the machine is offered for sale."

"In the time we have been making tractors the field has been thoroughly covered, the claims made for the various types have been thoroughly investigated, and a close study made of every claimed improvement. Our tractors have been thoroughly tested in the Dakotas, in Louisiana swamps and on the average farms of the middle west so that they have been operated under almost every condition possible."

The Light Allwork tractor is a compactly built machine. It is sturdy and solid with rigid construction. It is simple in design with no intricate parts. It uses the regular farm implements the same as the horses pull.

Kinnard is Tractor Easy to Handle and Easy to Be Cared For

The "Kinnard" tractor is a four-wheel tractor, built on the three-wheel principle, thereby eliminating the differential gears, the drive wheels being two in number, but located close together, which permits the tractor to be turned in a small radius, the neat construction being compact and graceful.

The slow forward speed of this machine is two to two and one-half miles per hour while the fast forward speed is three and one-half to four miles per hour. The transmission is of the same general type and made of the same material as is used in the best automobile construction. The belt pulley receives its motion through a pair of accurately cut, semi-steel bevel gears and is located at the forward end of the tractor frame on the right hand side.

Because of its accessibility the "Kinnard" is an easy tractor to care for, and by reason of its general serviceability and wide range of usefulness it is worthy of close investigation by anyone considering the purchase of a tractor.

Waite Willing to Make Demonstration for Any Farm

The Waite tractor was one of the interesting exhibits at the Fremont show this week. The Waite tractor is rated eight horse-power at the draw bar and sixteen horse-power at the belt. It is a fine machine on a farm, be it small or large. The machine has gearless transmission which the manufacturers claim is the ideal drive for a machine of this kind. One of the strong points about the Waite tractor is the willingness of the manufacturers to make demonstrations on any farm for any farmer who indicates that he is interested in the purchase of the machine that fills the bill with him.

Bee Want Ads produce best results.

C. H. M'CORMICK SEES TRACTOR SHOW WORK

President of I. H. C. Says the Exhibition Is Full of Wonder and Education.

FREMONT PROPER PLACE

Cyrus H. McCormick, president of the International Harvester company, and son of the man who gave the world the reaper, visited the great Fremont tractor demonstration Tuesday. He spent a busy day inspecting the exhibit of his company at the demonstration, and watching the many makes of tractors in operation on the field.

"This is my first visit," said Mr. McCormick, "to a tractor demonstration conducted on such a generous scale. Fremont has been well chosen, geographically, for this exhibit and the great crowds in attendance prove the wisdom of those who organized the meeting, and the practical need of such a gathering."

"A collective exhibit like this impresses one with the force and the future value of the industry more than would any scores of individual exhibits. There can be no doubt that the tractor—which furnishes power in convenient units and for various purposes to the farmer—is one of the great steps of progress of the twentieth century. It is a logical and

helpful successor of the plow, the reaper, and the threshing.

"Nebraska, which leads in so many ways, has shown its wisdom, its foresight, and its broad public spirit in organizing this meeting which is of great value to the manufacturers and sellers of power, and to the farmers who are purchasers of power. The attendance of farmers who come from long distances attests the fact that this is not a pleasure gathering only, but a practical demonstration on a large scale that mobile units of power for general farm use can be produced and successfully operated."

Tractor That is Easy to Turn is Center of Crowd

The Albaugh-Dover Tractor was one of the interesting displays at Fremont to a large number of farmers. After watching the tractor perform on a small space of ground, where it turned, went ahead, backed up and moved to every corner of the small space within the tent, one farmer was heard to remark: "That machine reminds me of a well trained, high-strung, anxious horse. It moves so quickly here, there and everywhere, and it seems so powerful and precise in its movements."

What the farmer said was true. Very few tractors appear as easy of control, so easy to drive to the place wanted as the Albaugh-Dover. The secret of the quick, easy handling of this tractor lies in the special transmission patents, which are owned exclusively by this company.

The Albaugh-Dover is equipped

with a Waukesha motor, which has the reputation of being one of the best on the market.

Farmer Boy Maker Tells What User May Expect of Tractor

One of the most enthusiastic men on the tractor grounds at Fremont this week is W. M. McIntyre of the McIntyre Manufacturing company, Columbus, O., builders of the "Farmer Boy" tractor.

"Modern agriculture demands better farming," said Mr. McIntyre, "It is not only necessary to better the means and equipment with which the farmer has been working in the past, but he must supplement his mental and physical ability, and farm more acres, or he must farm those which he already has more intensely."

"The tractor offers to supplement the farmer's efforts, make his equipment more efficient, lessen his labor troubles and convert his land into beautifully productive acres. The tractor having the ability to labor continuously without regard to heat or cold, high or low altitude, or any adversity of weather, and a capacity for rapid and thorough work, enables the farmer to take advantage of every favorable moment, and do his work at the most advantageous time."

"In the 'Farmer Boy' tractor we believe that we have developed a machine that has these qualifications. To do the work on the farm at a money-making and money-saving price is our purpose. 'Farmer Boy' will pull all the implements on the average farm, including the two fourteen-inch plows,

with plenty of reserve power; it will do the hauling and operate every belt-driven machine on the place. It is a simple machine combined with high quality design and construction which make for durability and long service."

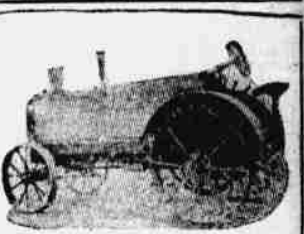
The performance of the "Farmer Boy" in the field appeared to fulfill all the claims made by Mr. McIntyre.

Say All Farms Soon to be Lighted by Electricity

"Delco Light," a small farm electric light plant, is the center of a great deal of interest at the Fremont Tractor show. The Delco people have completed a lighting combination that makes it possible for the small farm home to have electric lights with a minimum expense and with little trouble. The generator is connected direct to the gas engine and the operation of the engine is controlled automatically. A storage battery is filled by the generator and this cuts off the engine. The engine is started again by the pressure of a button. The Delco people predict that it will be but a short time until every farm home will be using electricity.

Every Showing Seven Sizes Of Tractors and a Cultivator

One of the most diversified displays at Fremont this year is the Avery show. Seven sizes of tractors and the Avery Two-Row cultivator makes up the exhibit, which has the attention of a large number of farmers from morning until night of each day. The performance of the Avery in the field was most satisfactory and caused a number of sales to be closed on the first day of the plowing demonstration.



The Waite Tractor

Light, Simple, Practical, Durable, Efficient, Powerful, Economical. IMPOSSIBLE TO STRIP GEARS

"I plowed 65 acres in less than 8 days with a Waite Tractor. It can do the work of 8 horses in the field."—M. A. Sharp, Wood-lawn, Ia.

"I averaged about 9 acres a day plowing and the Waite Tractor will do the work of 8 mules."—M. A. Sharp, Wood-lawn, Ia.

"The Waite Tractor is a general purpose tractor; will do your field work, your belt work, your road work, your hauling, at less cost than any other tractor on the market."

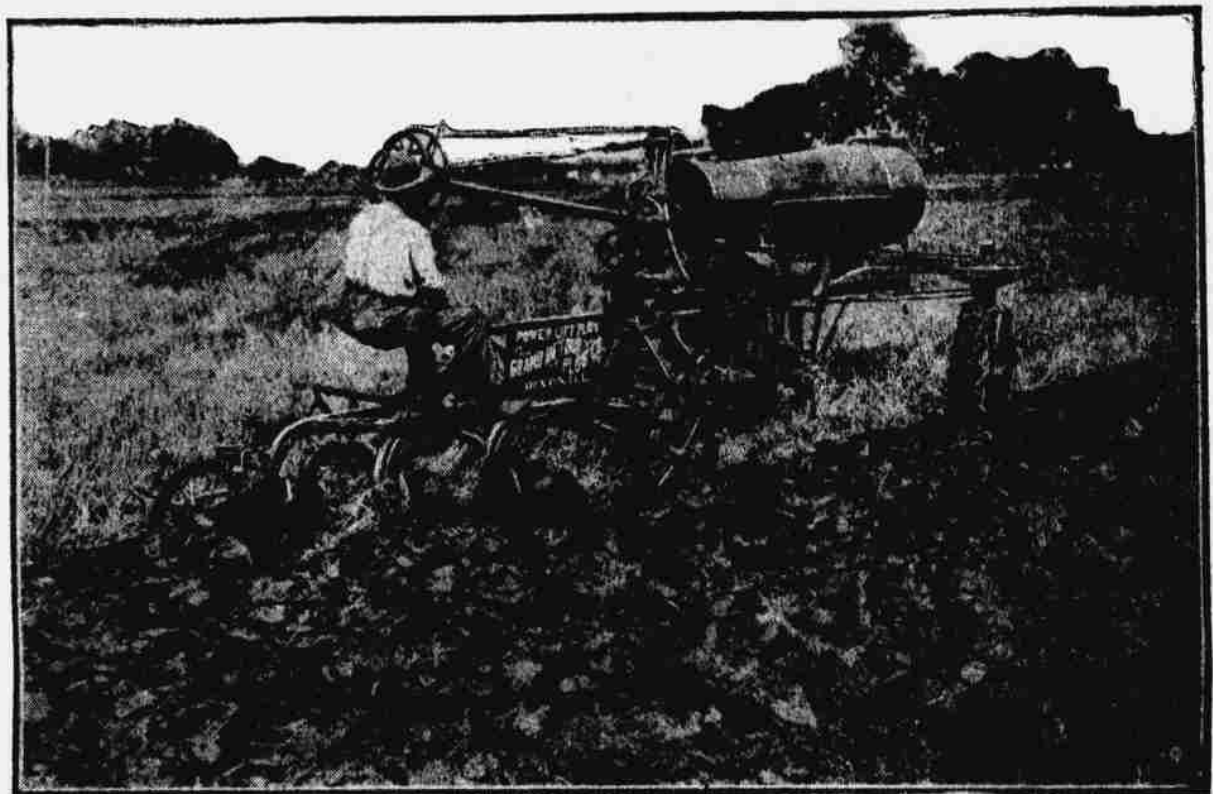
\$800 F. O. B. Elgin, Ill. (Subject to change without notice.)

The Waite Tractor is light, sure and speedy—the fastest-going, quickest-working tractor you ever saw. Write for descriptive circulars and name of nearest dealer.

WAITE TRACTOR SALES CO.

Westminster Bldg., Chicago, Ill.

Bee Want Ads produce best results.



Bates Steel Mule

At the National Power Farm Demonstration AT FREMONT THIS WEEK

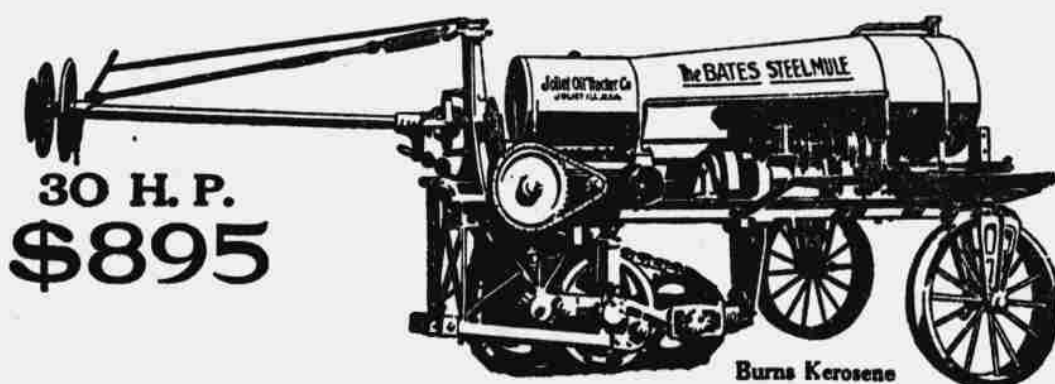
At the great tractor demonstration at Fremont this week, you can see the Bates Steel Mule, the only real "one-man" machine right on the job. You won't see one man operating the tractor and another looking after the plows. No, sir! The Bates Steel Mule uses only one man for every operation from plowing to harvesting.

This one feature alone on the Bates Steel Mule is worth a good \$200.00 a year to you over the profit any ordinary tractor could possibly make for you, even though it had the same power and general utility of the Bates Steel Mule. Just suppose you use your tractor 100 days a year for field work. The saving of an extra man at \$2.00 per day (which is what he costs, counting board, lodging and money) puts \$200.00 a year in your pocket.

Two-Hundred-Dollars-Every-Year! Do you realize that that is 10 per cent on two thousand dollars? That's almost enough to buy three Bates Steel Mules.

When you figure that almost any good make of light tractor will practically pay for itself over horses its first year and then see how much more the "one-man" Bates Steel Mule will save over one of these "two-men" tractors, you can get some idea of why our big plant, running night and day, has never been able to supply the demand for Steel Mules.

The Bates Steel Mule is propelled with a "Crawler" instead of a wheel, which means full power at the drawbar—that it works on any soil, wet or dry, and does not pack the ground. No new implements are necessary—the tools you now have will do the work cheaper, quicker and better when hitched to a Bates Steel Mule. You can do more different kinds of farm jobs with it more days a year than any other tractor built.



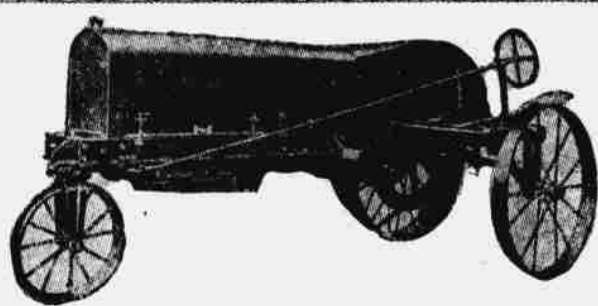
30 H. P.
\$895

Burns Kerosene

Free Souvenirs For All Who Visit Our Exhibit At Fremont

The Joliet Oil Tractor Company

Joliet, Illinois.



The "Farmer Boy" What Every Farmer Needs

- First class in every respect.
- Most simple and effective.
- Best possible construction.
- Always at your service.
- Every part performs a function.
- Your best friend and companion
- Reserve power, ease and economy.
- Relieves labor, worry and expense.
- One tractor for every purpose.

SOLD UNDER A POSITIVE GUARANTEE
Price—Fully equipped, \$850.00 f. o. b. Columbus, O.

The McIntyre Manufacturing Co.
Columbus, Ohio, U. S. A.

Study The Pictures



They Tell The Story