

LOCAL BUILDING GOES ON APACE

Many Important Contracts for New Structures Listed in the Week's Activities.

ST. PATRICK'S CHURCH TO BUILD

Bids are being received for a \$20,000 brick and stone school building for St. Patrick's church. The school is to be built at Eleventh and Cass streets. It is to be two-story and basement. Plans have been completed and the letting of the contract will be made soon.

Every week is bringing out new plans for new building activities in Omaha, and every week is closing many contracts for the construction of those for which plans have been out for some time. The revised bids on the job of constructing St. Peter's Roman Catholic church, Thirty-second and Pacific streets, have now gone in, and it is expected that the awarding of the contract will be not delayed much longer. Considerable delay has already been occasioned by the fact that revised bids were asked for, with some changes in the plans involving the elimination of much of the stone work originally planned upon. This has thrown the beginning of building operations a few weeks behind, but it is hoped to get as much of the work as possible done while the summer weather lasts.

It is estimated that this building will cost \$125,000. It is to be 120x172 feet.

E. Roknick, 2710 Farnam street, is to build a \$12,000 bakery plant at Twenty-seventh and Farnam streets. The structure is to be 12x30 feet. The general contract has been let to Alexander Beck.

V. P. Chiodo is to build an apartment house to cost \$60,000 at Twenty-fifth and Marcy streets. It is to be 70x30 feet and three stories high, with a basement, and of brick and stone construction. Plans are being drawn.

A rooming house to cost \$11,000 is to be built at 1871-S South Thirteenth street. The structure is to be 26x30 feet.

OSBORNE COMPANY REPORTS MANY SALES FOR THE MONTH

Twenty residences of moderate size were among the properties recently sold by the Osborne Realty company. This company has been enjoying a nice business during the last month. The following are among the sales made:

Four-room cottage and two lots at 4214 Camden avenue to Florence Vrooman.
Five-room bungalow and one lot at 2329 South Thirty-fifth street to William Mathews.
Five-room cottage and one lot at 3312 Charles street to Harry Bowman.
Five-room cottage and one lot at 2706 Ames avenue to F. G. Carpenter.
Five-room bungalow and one lot at 2622 Ames avenue to L. E. Kelley.
Five-room bungalow and one lot at 2435 Laurel avenue to Fred Miller.
Six-room house and three lots at 5400 North Fourteenth avenue to Edward Williamson.
Five-room house and one lot at 2909 Humboldt street to Sam Walker.
Seven-room house and one lot at 5424 Martha street to Cora E. Tucker.
Five-room bungalow and one lot at 1822 Miami street to L. E. Kelley.
Five-room bungalow and one lot at 1822 Miami street to Theo. Reese.
Five-room bungalow and one lot at 2631 Blum street to Hannah Mofat.
Eight-room house and one lot at 3813 Woolworth avenue to J. W. Vogel.
Four-room house and one lot at 2908 Seward street to Louis Jehon.
Four-room house and one lot at 3402 Meredith avenue to George Messerschmidt.
Four-room house and three lots at 5314 North Thirty-fourth street to Mollie C. Clark.
Four-room house and three lots at 5320 North Thirty-fourth street to Mollie C. Clark.
Four-room cottage and one lot at 2104 North Twenty-ninth street to Andrew Handberg.
Five-room cottage and one lot at 435 North Thirty-ninth street to John Britt.
Five-room bungalow and one lot at 4225 Leavenworth street to H. Anderson.

Green Tells the Realty Men What They Should Do

W. H. Green is back from California, where he again spent the winter. Yes, he told the Real Estate Exchange that he was back at the meeting last Wednesday. He always announces himself when he returns. He always tells the exchange what it should do. Even though he was chairman of some of the exchange's special committees charged with specific duties, he stayed away many months, but, nevertheless, he had some specific advice to give to the exchange when he returned as to what to do and how hard to work the committees. Several of the recent meetings have been given over to the discussion of bright ideas, offered by the various members. Mr. Green suggested that when all the bright ideas are in, the exchange select the three brightest and go to work on them to accomplish something. "Let us accomplish three big things this year, and make that the work of the balance of the year," he said. "It will be better to accomplish three things than to tackle a score or more and accomplish nothing."

Eighth Irish Rebel Leader Executed

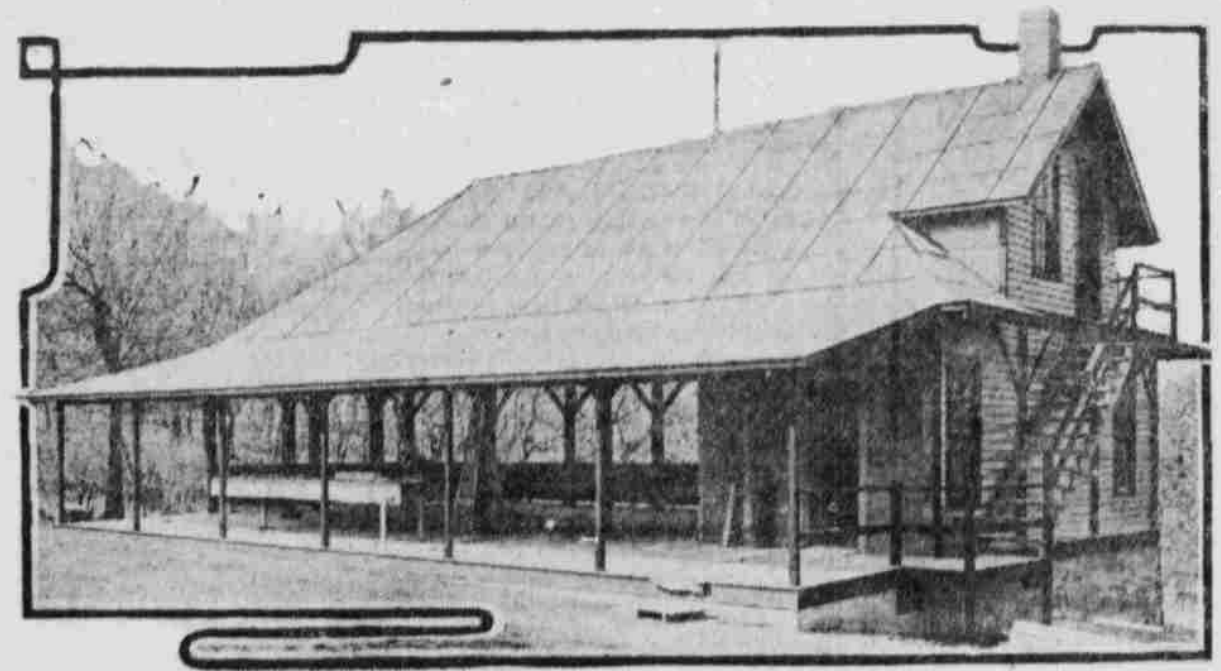
BURLIN, May 6.—(V-L.) London.—It was officially announced today that Major John McBride, the eighth leader of the Sinn Fein rebellion to suffer death by sentence of court-martial, has been shot. The sentences of Thomas Hunter and William Congrave, who were sentenced to death with Major McBride, were commuted to life imprisonment. Joseph Plunkett, one of the leaders in the rebellion, was hanged an hour before he was put to death in the gallows. Major John McBride fought throughout the war with the Irish brigade under General Jemmett. When the House of Commons voted to send him to the gallows, he made his escape and took refuge in Paris, where he later married Miss Maude Gonne, known in some circles as Ireland's first lady. In 1915, McBride and Miss Gonne were deported to the United States as Irish patriots.

Judge Woodrough to hold court at 10:00 A. M. Judge Woodrough, Clerk of Court, will hold court at 10:00 A. M. in the Lincoln County court house. The court will hear the case of the State vs. the People of the State, which was brought on by the State vs. the People of the State.

SEVERAL KILLED IN SAN DOMINGO FIGHTING

SEATTLE, May 6.—(V-L.)—Several persons were killed in the fighting in San Domingo, according to reports from the city. The fighting was between the forces of the United States and the forces of the rebels.

PAVILION AT MANDAN PARK—Quiet spot on the South Side, where old and young may gather on warm days to while away the hours—An ideal spot for picnics.



The new pavilion at Mandan park, South Side, will be opened today. This is a neat and serviceable building of sufficient dimensions to meet the demands of this pretty riverside park.

This improvement marks the beginning of a substantial development of the South Side park system under the Greater Omaha regime.

City Commissioner Hummel believes Mandan park has not received the attention that it deserves. Scenicly, it overlooks a commanding river view and is in line for further improvement. Mr. Hummel intends to build a strong wall along the embankment, which now is guarded only by an old rail fence.

Mandan park is an ideal spot for picnics. It is not far from the Albright street car line and is accessible by automobile. In arranging the band concert schedule for the season this park will be remembered and South Siders will have reason to appreciate during the season the fact that they have been consolidated with the parent city.

The new pavilion has accommodations for the caretaker and will afford shelter for a goodly company of park visitors.

Side park system under the Greater Omaha regime.

City Commissioner Hummel believes Mandan park has not received the attention that it deserves. Scenicly, it overlooks a commanding river view and is in line for further improvement. Mr. Hummel intends to build a strong wall along the embankment, which now is guarded only by an old rail fence.

Mandan park is an ideal spot for picnics. It is not far from the Albright street car line and is accessible by automobile. In arranging the band concert schedule for the season this park will be remembered and South Siders will have reason to appreciate during the season the fact that they have been consolidated with the parent city.

The new pavilion has accommodations for the caretaker and will afford shelter for a goodly company of park visitors.

Side park system under the Greater Omaha regime.

City Commissioner Hummel believes Mandan park has not received the attention that it deserves. Scenicly, it overlooks a commanding river view and is in line for further improvement. Mr. Hummel intends to build a strong wall along the embankment, which now is guarded only by an old rail fence.

Mandan park is an ideal spot for picnics. It is not far from the Albright street car line and is accessible by automobile. In arranging the band concert schedule for the season this park will be remembered and South Siders will have reason to appreciate during the season the fact that they have been consolidated with the parent city.

The new pavilion has accommodations for the caretaker and will afford shelter for a goodly company of park visitors.

Side park system under the Greater Omaha regime.

City Commissioner Hummel believes Mandan park has not received the attention that it deserves. Scenicly, it overlooks a commanding river view and is in line for further improvement. Mr. Hummel intends to build a strong wall along the embankment, which now is guarded only by an old rail fence.

Mandan park is an ideal spot for picnics. It is not far from the Albright street car line and is accessible by automobile. In arranging the band concert schedule for the season this park will be remembered and South Siders will have reason to appreciate during the season the fact that they have been consolidated with the parent city.

The new pavilion has accommodations for the caretaker and will afford shelter for a goodly company of park visitors.

Side park system under the Greater Omaha regime.

City Commissioner Hummel believes Mandan park has not received the attention that it deserves. Scenicly, it overlooks a commanding river view and is in line for further improvement. Mr. Hummel intends to build a strong wall along the embankment, which now is guarded only by an old rail fence.

Mandan park is an ideal spot for picnics. It is not far from the Albright street car line and is accessible by automobile. In arranging the band concert schedule for the season this park will be remembered and South Siders will have reason to appreciate during the season the fact that they have been consolidated with the parent city.

The new pavilion has accommodations for the caretaker and will afford shelter for a goodly company of park visitors.

Side park system under the Greater Omaha regime.

City Commissioner Hummel believes Mandan park has not received the attention that it deserves. Scenicly, it overlooks a commanding river view and is in line for further improvement. Mr. Hummel intends to build a strong wall along the embankment, which now is guarded only by an old rail fence.

Mandan park is an ideal spot for picnics. It is not far from the Albright street car line and is accessible by automobile. In arranging the band concert schedule for the season this park will be remembered and South Siders will have reason to appreciate during the season the fact that they have been consolidated with the parent city.

The new pavilion has accommodations for the caretaker and will afford shelter for a goodly company of park visitors.

Side park system under the Greater Omaha regime.

City Commissioner Hummel believes Mandan park has not received the attention that it deserves. Scenicly, it overlooks a commanding river view and is in line for further improvement. Mr. Hummel intends to build a strong wall along the embankment, which now is guarded only by an old rail fence.

Mandan park is an ideal spot for picnics. It is not far from the Albright street car line and is accessible by automobile. In arranging the band concert schedule for the season this park will be remembered and South Siders will have reason to appreciate during the season the fact that they have been consolidated with the parent city.

The new pavilion has accommodations for the caretaker and will afford shelter for a goodly company of park visitors.

Side park system under the Greater Omaha regime.

City Commissioner Hummel believes Mandan park has not received the attention that it deserves. Scenicly, it overlooks a commanding river view and is in line for further improvement. Mr. Hummel intends to build a strong wall along the embankment, which now is guarded only by an old rail fence.

Mandan park is an ideal spot for picnics. It is not far from the Albright street car line and is accessible by automobile. In arranging the band concert schedule for the season this park will be remembered and South Siders will have reason to appreciate during the season the fact that they have been consolidated with the parent city.

The new pavilion has accommodations for the caretaker and will afford shelter for a goodly company of park visitors.

Side park system under the Greater Omaha regime.

City Commissioner Hummel believes Mandan park has not received the attention that it deserves. Scenicly, it overlooks a commanding river view and is in line for further improvement. Mr. Hummel intends to build a strong wall along the embankment, which now is guarded only by an old rail fence.

Mandan park is an ideal spot for picnics. It is not far from the Albright street car line and is accessible by automobile. In arranging the band concert schedule for the season this park will be remembered and South Siders will have reason to appreciate during the season the fact that they have been consolidated with the parent city.

The new pavilion has accommodations for the caretaker and will afford shelter for a goodly company of park visitors.

Side park system under the Greater Omaha regime.

City Commissioner Hummel believes Mandan park has not received the attention that it deserves. Scenicly, it overlooks a commanding river view and is in line for further improvement. Mr. Hummel intends to build a strong wall along the embankment, which now is guarded only by an old rail fence.

Mandan park is an ideal spot for picnics. It is not far from the Albright street car line and is accessible by automobile. In arranging the band concert schedule for the season this park will be remembered and South Siders will have reason to appreciate during the season the fact that they have been consolidated with the parent city.

The new pavilion has accommodations for the caretaker and will afford shelter for a goodly company of park visitors.

Side park system under the Greater Omaha regime.

City Commissioner Hummel believes Mandan park has not received the attention that it deserves. Scenicly, it overlooks a commanding river view and is in line for further improvement. Mr. Hummel intends to build a strong wall along the embankment, which now is guarded only by an old rail fence.

Mandan park is an ideal spot for picnics. It is not far from the Albright street car line and is accessible by automobile. In arranging the band concert schedule for the season this park will be remembered and South Siders will have reason to appreciate during the season the fact that they have been consolidated with the parent city.

The new pavilion has accommodations for the caretaker and will afford shelter for a goodly company of park visitors.

Side park system under the Greater Omaha regime.

City Commissioner Hummel believes Mandan park has not received the attention that it deserves. Scenicly, it overlooks a commanding river view and is in line for further improvement. Mr. Hummel intends to build a strong wall along the embankment, which now is guarded only by an old rail fence.

Mandan park is an ideal spot for picnics. It is not far from the Albright street car line and is accessible by automobile. In arranging the band concert schedule for the season this park will be remembered and South Siders will have reason to appreciate during the season the fact that they have been consolidated with the parent city.

The new pavilion has accommodations for the caretaker and will afford shelter for a goodly company of park visitors.

Side park system under the Greater Omaha regime.

City Commissioner Hummel believes Mandan park has not received the attention that it deserves. Scenicly, it overlooks a commanding river view and is in line for further improvement. Mr. Hummel intends to build a strong wall along the embankment, which now is guarded only by an old rail fence.

Mandan park is an ideal spot for picnics. It is not far from the Albright street car line and is accessible by automobile. In arranging the band concert schedule for the season this park will be remembered and South Siders will have reason to appreciate during the season the fact that they have been consolidated with the parent city.

The new pavilion has accommodations for the caretaker and will afford shelter for a goodly company of park visitors.

Side park system under the Greater Omaha regime.

City Commissioner Hummel believes Mandan park has not received the attention that it deserves. Scenicly, it overlooks a commanding river view and is in line for further improvement. Mr. Hummel intends to build a strong wall along the embankment, which now is guarded only by an old rail fence.

Mandan park is an ideal spot for picnics. It is not far from the Albright street car line and is accessible by automobile. In arranging the band concert schedule for the season this park will be remembered and South Siders will have reason to appreciate during the season the fact that they have been consolidated with the parent city.

The new pavilion has accommodations for the caretaker and will afford shelter for a goodly company of park visitors.

Side park system under the Greater Omaha regime.

City Commissioner Hummel believes Mandan park has not received the attention that it deserves. Scenicly, it overlooks a commanding river view and is in line for further improvement. Mr. Hummel intends to build a strong wall along the embankment, which now is guarded only by an old rail fence.

Mandan park is an ideal spot for picnics. It is not far from the Albright street car line and is accessible by automobile. In arranging the band concert schedule for the season this park will be remembered and South Siders will have reason to appreciate during the season the fact that they have been consolidated with the parent city.

The new pavilion has accommodations for the caretaker and will afford shelter for a goodly company of park visitors.

Side park system under the Greater Omaha regime.

City Commissioner Hummel believes Mandan park has not received the attention that it deserves. Scenicly, it overlooks a commanding river view and is in line for further improvement. Mr. Hummel intends to build a strong wall along the embankment, which now is guarded only by an old rail fence.

Mandan park is an ideal spot for picnics. It is not far from the Albright street car line and is accessible by automobile. In arranging the band concert schedule for the season this park will be remembered and South Siders will have reason to appreciate during the season the fact that they have been consolidated with the parent city.

The new pavilion has accommodations for the caretaker and will afford shelter for a goodly company of park visitors.

Side park system under the Greater Omaha regime.

City Commissioner Hummel believes Mandan park has not received the attention that it deserves. Scenicly, it overlooks a commanding river view and is in line for further improvement. Mr. Hummel intends to build a strong wall along the embankment, which now is guarded only by an old rail fence.

Mandan park is an ideal spot for picnics. It is not far from the Albright street car line and is accessible by automobile. In arranging the band concert schedule for the season this park will be remembered and South Siders will have reason to appreciate during the season the fact that they have been consolidated with the parent city.

The new pavilion has accommodations for the caretaker and will afford shelter for a goodly company of park visitors.

Side park system under the Greater Omaha regime.

City Commissioner Hummel believes Mandan park has not received the attention that it deserves. Scenicly, it overlooks a commanding river view and is in line for further improvement. Mr. Hummel intends to build a strong wall along the embankment, which now is guarded only by an old rail fence.

Mandan park is an ideal spot for picnics. It is not far from the Albright street car line and is accessible by automobile. In arranging the band concert schedule for the season this park will be remembered and South Siders will have reason to appreciate during the season the fact that they have been consolidated with the parent city.

The new pavilion has accommodations for the caretaker and will afford shelter for a goodly company of park visitors.

Side park system under the Greater Omaha regime.

City Commissioner Hummel believes Mandan park has not received the attention that it deserves. Scenicly, it overlooks a commanding river view and is in line for further improvement. Mr. Hummel intends to build a strong wall along the embankment, which now is guarded only by an old rail fence.

A. P. TUKEY HAS BIRTHDAY CELEBRATION ON MAY DAY

A. P. Tukey, one of the oldest real estate men in the city, was seventy-one on May 1. He attended the meeting of the Real Estate Exchange last Wednesday and was given a rousing cheer when he announced his age. He was introduced by President Harrison as the host of the exchange. Mr. Tukey told the boys he was too old to make speeches and thus passed the invitation to address the exchange.



Cyclone Sanitary Lawn Fence

Is the highest grade fence on the market—heavier, stronger and closer spaced than any other. Complete, erected on wood post, 25 cents per lineal foot and up.

We carry a full line of wire and iron fences and gates, trellises for roses and vines, flower bed borders, fence stays, steel posts for field fencing. Come in and see the line and get our low prices. Send for catalogue.

ANCHOR FENCE CO.

207 N. 17th St.
Phone Red 814.

WALL PAPER

Phone Douglas 1136

Phone Douglas 1136

Newest Styles Largest Selection Finest Quality Best Service Lowest Prices

Just phone Douglas 1136 now and our dealer near you, who is an expert interior decorator, will call, help you select your decorations to harmonize with your furnishings and make you estimates on the work you want done. No obligation to you.

This is the easy, economical and satisfactory way to decorate. Phone today.

Omaha Wall Paper Co.

Douglas 1136
1113-1115-1117 Howard St.,
Omaha

Let Them Grow With Growing Omaha

Beautiful stock of shade and ornamental trees, shrubs and hedge plants at greatly reduced prices. Apple trees in 22 varieties, three years old, only 10c.

Call at office and display grounds at 61st and Riggs Sts., Benson, or phone Benson 534.

BENSON-OMAHA NURSERIES

P. J. FLYNN, Prop. Benson, Nebraska.

Paint Your Property Now!

We have ready mixed house paint from \$1.75 a gallon up.

Good black screen paint, per quart, 50c
Fence paint, per gallon, 1.35
Barn paint, per gallon, 1.35
Pratt & Lambert's Floor Varnish, per quart, 90c

Cartier and Southern White Lead, Woodman Pure Linseed Oil.

Barker Bros. Paint Co.

1809 1/2 Farnam. Douglas 4750.

Awnings of the Better Grades

Awnings for particular people—those who like to have their automobiles protected from sun and rain, and who want a better looking car in this way. The awnings are made of the best material and are guaranteed to last.

Let our representatives call and make an estimate.

Nebraska Tent & Awning Company

1222 Farnam St. E. E. McDONALD, Mgr. Phone Douglas 3641.

1222 Farnam St. Tel. D. 353

1222 Farnam St. Tel. D. 353

1222 Farnam St. Tel. D. 353

1222 Farnam St. Tel. D. 353

1222 Farnam St. Tel. D. 353

1222 Farnam St. Tel. D. 353

1222 Farnam St. Tel. D. 353

1222 Farnam St. Tel. D. 353

1222 Farnam St. Tel. D. 353

1222 Farnam St. Tel. D. 353

1222 Farnam St. Tel. D. 353

1222 Farnam St. Tel. D. 353

1222 Farnam St. Tel. D. 353

1222 Farnam St. Tel. D. 353



We Have a Book of Great Importance For You

The only way we can get your name so that we can send you a copy is through this advertisement.

This book deals with a very important subject—one that is interesting to every person intending to build a home. It may be the means of saving you 30% on your fuel bill this coming winter, and the pleasure and comfort of a cool home next summer. It tells all about

Flaxlinum

TRADE MARK REGISTERED

We shall be pleased to send you a copy of this De Luxe Booklet on receipt of your name and address, and with it send you a sample of Flaxlinum, a board form of insulation made from flax fiber, which is thoroughly degummed and chemically treated, making it rat and vermin proof. Flaxlinum is equal to four solid inches of back plaster and thirty thicknesses of building paper.

Flaxlinum is sold by:

C. W. Hull Company.
Chicago Lumber Company.
C. N. Dietz Lumber Company.
George A. Hoagland & Company.
Bradford-Kennedy Lumber Company.
Gulon & Ledwith.
Farmers' Lumber Company.
Bullard, Hoagland & Benedict.
Missouri River Lumber Company.
E. F. Galy Lumber Company.
Udell Lumber & Coal Company.
Boyer-Van Kuren Lumber & Coal Company.
Enterprise Lumber & Coal Company.
Rivett Lumber & Coal Company.
Plattner Lumber Company.
Florence Lumber & Coal Company, Florence, Neb.

Send for This De Luxe Booklet



Northern Insulating Co.

1005 S. University Ave.,
St. Paul, Minn.

Vegetable Plants

We have all the popular named varieties.

The Nebraska Seed Co.
1613 Howard Street

REAL ESTATE LOANS

Loans made for building, for lifting a mortgage and for other purposes. If you own a lot and have a portion of the cost of building, we can loan you the balance. No commission. No delay. Small monthly payments.

Omaha Loan & Building Association

Northwest Corner Dodge and Fifteenth Streets.
G. W. LOONIS, President. W. R. ADAIR, Secy. & Treas.

Be Sure You Have HY-TEX BRICK In Your Building

HYDRAULIC PRESS BRICK CO.

1302 W. O. W. Building.

Our Fireproof Warehouse

offers at very reasonable rates safe storage for your furniture, pianos, rugs and other household furnishings. Separate locked rooms, of which you carry the key.

MOVING PACKING STORAGE

OMAHA VAN AND STORAGE CO.