

# SELLING ABOVE PAR



Recently a number of Omaha manufacturing companies have placed large blocks of stock on the open market for sale. Thousands of dollars worth have been taken, much of it by people living in this city, and in practically every instance where an established concern has offered it, the stock has sold at more than 100 cents on the dollar.

What is the meaning of all this? We're glad you asked. These companies are selling stock because the demand for their products has compelled them to increase their capitalizations and operate in bigger ways. Their stocks are selling readily at a premium because continued reasonable dividends have made them good investments.

Omaha has more than 400 such factories, producing altogether nearly a quarter of a billion dollars worth of goods annually. Every one is the result of a natural demand, and every one has succeeded because it has produced the highest quality goods to sell at the lowest possible prices.

These factories last year paid approximately \$17,000,000 in wages and salaries to their employees. They represent an aggregate investment of many millions. The taxes they pay furnish much of the revenue with which the city maintains its government, builds parks and boulevards, erects schools and makes such other necessary improvements.

The owners of these factories want to make Omaha a much greater manufacturing center and the plants worth proportionately more to the city. They would like to increase their payrolls, enlarge their operations and pay more taxes. They can if the demand for their products increases and their stocks continue to sell at a premium.

You, people of Omaha, who are benefitted directly by the factory payrolls and the factory taxes, can keep the factory stocks selling at above par. You can do it without a single sacrifice on your part. Begin today, by

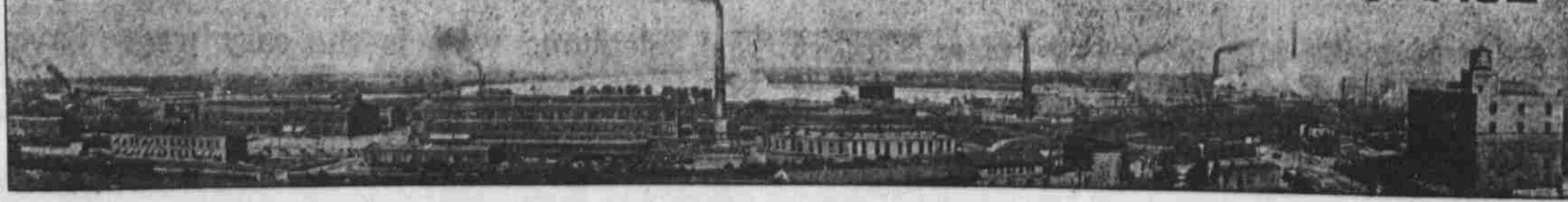
**Buying, Using and Serving Omaha-Made Goods**

- BAG MANUFACTURERS**  
BEMIS-OMAHA BAG CO., 11th and Jackson Sts., Douglas 1109.
- BOILER MAKERS**  
DRAKE-WILLIAMS-MOUNT CO., 224 and Hickory, Douglas 1042.
- BOTTLERS**  
OMAHA BOTTLING CO., 615 No. 11th St., Douglas 1100.  
SLOUP-SHERRETT BOTTLING CO., 1509 Webster St., Douglas 1288.
- BOXES—PACKING**  
OMAHA BOX CO., East Omaha, Webster 413.  
EGGERS-O'FLYING CO., (Omaha Fibre & Corrugated Box Co.), 16th and Leavenworth, Douglas 1128.
- BREWERS**  
STONE BREWING CO., 1619 Sherman Ave., Webster 221.  
METZ BREWING CO., 8th and Leavenworth, Douglas 1492.  
FRED KRUG BREWING CO., Krug Avenue and Boulevard, Tyler 420.  
JETER BREWING CO., 30th and Y Sts. (South 8).  
WILLOW SPRINGS BREWING CO., 34 and Hickory Sts., Douglas 1308.
- BRICK MANUFACTURERS**  
HYDRAULIC PRESS BRICK CO., 1308 W. O. W. Bldg., Douglas 909.
- BUTCHERS' and PACKERS' TOOLS**  
C. E. LEVER & CO., 1510 Capitol Ave., Douglas 619.
- CASCO POULTRY AND CHICK FEED, CORN MEAL, ETC.**  
CASCO MILLING CO., 14th and Paul Sts., Phones: Doug. 1479 or 972.
- CEMENT BLOCK MANUFACTURERS**  
OMAHA CONCRETE STONE CO., N. W. Cor. 28th Ave. and Sahler, Webster 280.
- CONFECTIONERY**  
D. J. O'BRIEN CO., 201-11 Douglas St., Douglas 822.  
VORHEIS & DINWIDDIE CO., 1212-13 Jones St., Douglas 802.
- COUCHES AND MATTRESSES**  
L. G. DOUP CO., 1201 Nicholas St., Douglas 1600.
- COFFEE, TEA AND SPICES**  
FARMER-OLSON CO., 112 So. 11th St., Douglas 2328.  
GERMAN-AMERICAN COFFEE CO., 1117-19 Dodge St., Douglas 7195.
- CRACKER MANUFACTURERS**  
TREN HINGST CO., Capitol Ave., 12th to 13th Sts., Douglas 2123.
- CRAVATS, BELTS, PURSES, POCKET BOOKS AND SUSPENDERS**  
SMITH, LOCKWOOD MFG. CO., 2222 South 13th St., Douglas 6251.
- CREAMERY COMPANIES**  
FAIRMONT CREAMERY CO., 12th and Jones Sts., Douglas 1401.  
WATERLOO CREAMERY CO., 1817 Howard St., Douglas 1400.
- COMMISSION, PRODUCE, ETC.**  
KIRCHENBAUM & SON, INC., 1209-11 Howard St., Douglas 424.
- DISTILLERS**  
LEE & CO. WILLOW SPRINGS DISTILLERY, 221-3 Howard St., Douglas 924.
- ELECTRIC COMPANIES**  
OMAHA ELECTRIC LIGHT & POWER CO., U. F. Bldg., Douglas 1022.
- ELECTRICAL SUPPLIES AND LIGHTING FIXTURES**  
BURGESS-GRAEDER Co., 1211 Howard St., Tyler 621.
- ENGRAVERS—ELECTROTYPERS**  
BAKER BROS. ENGRAVING CO., 1212 Howard St., Douglas 2622.
- ENVELOPE MANUFACTURERS**  
BURLINBY ENVELOPE CO., 417 So. 12th St., Douglas 621.
- FURNACES**  
STANDARD FURNACE & SUPPLY CO., 411-13 So. 10th St., Douglas 2027. (Rebuilds all cast and Wair all steel furnaces.)
- FIXTURES**  
OMAHA FIXTURE & SUPPLY CO., 411-13 So. 10th St., Douglas 2724.

- FLOUR MILLS**  
UPDEKILLING CO., 1212 Sherman Ave., Webster 62.
- FOUNDRIES—Casting and Sash Weights.**  
OMAHA FOUNDRY COMPANY, 207 Jackson St., Douglas 2422.
- FUR GOODS**  
NATIONAL FUR & TANNING CO., 1222 So. 12th St., Tyler 120.
- GAS COMPANIES**  
OMAHA GAS CO., 1202 Howard St., Douglas 602.
- HATS**  
OMAHA HAT FACTORY, 1221 Douglas St., Douglas 4222.
- ICE DEALERS**  
PEOPLE'S ICE & COLD STORAGE CO., 1224 Chicago St., Douglas 50.  
OMAHA ICE & COLD STORAGE CO., McCague Bldg., 12th and Dodge Sts., Douglas 422.
- ICE MACHINES**  
BAKER ICE MACHINES CO., 19th and Nicholas Sts., Douglas 1221.
- LAUNDRIES**  
HONFARREL LAUNDRY CO., 1702 Vinton St., Douglas 2222.  
KERRALL LAUNDRY CO., 1207-09-11 Jackson St., Douglas 212.  
FURNYAN LAUNDRY, 2202-12 Farnam St., Harney 1771.
- LEAD WORKS**  
LAWRENCE SHOT & LEAD CO., Factory South Omaha, Douglas 1222.
- LODGE SUPPLIES**  
LODGE SUPPLY CO., 1111 Farnam St., Douglas 4122.
- MACARONI**  
SKINNER MANUFACTURING CO., 14th and Jackson Sts., Tyler 1222.
- MONUMENTS**  
J. F. BLOOM & CO., 1702 Oaming St., Douglas 272.
- MIRRORS and ART GLASS WINDOWS**  
MIDLAND GLASS & PAINT CO., 2122 and Howard, Douglas 721.
- OILS**  
L. V. NICHOLAS OIL CO., 204 Balfour Bldg., Douglas 222.
- PACKING HOUSE PRODUCTS**  
SWIFT AND COMPANY, South Omaha, South 2222.
- PLANING MILL**  
BANKERS REALTY INVESTMENT CO., Ground Floor Bee Bldg., Douglas 2222.
- PRINTERS—BOOK AND JOB**  
OMAHA PRINTING CO., 12th and Farnam, Douglas 222.  
CORRY & MCKENZIE, 1407 Harney St., Douglas 2244.
- SADDLERY**  
J. E. HANBY & CO., 212-17 South 12th St., Douglas 222.
- STARCH MANUFACTURERS**  
DEFIANCE STARCH CO., 2222 Oaming St., Douglas 172.
- SERUM MANUFACTURERS**  
O. E. SERRIN CO., 2222 E. St., South Omaha, South 222.  
ATWELL SERUM CO., South Omaha, South 222.  
GRAIN BELT SUPPLY CO., Lobby Exchange Bldg., South Omaha, So. 2224, South Omaha, South 2222.
- TANKS, CULVERTS, GRAIN BINS, AND OIL DRUMS**  
NEBRASKA & IOWA STEEL TANK CO., 1201 Spruce St., Webster 272.
- TENTS AND AWNINGS**  
SCOTT-OMAHA TENT AND AWNING CO., 11th and Harney Sts., Doug. 222.
- TIN CANS AND SHEET METAL**  
GORDON LAWLESS CO., 8th and Dodge Sts., Douglas 222.
- WOOD WORKS**  
OMAHA WOOD WORKING CO., 1221 Harney St., Douglas 2244.
- WHOLESALE GROCERIES**  
FAYTON & GALLAGHER, 701-11 South 10th St., Douglas 222.

The manufacturers whose names appear on this page have spent more than \$100 each in this way in the last twelve months to tell you about Omaha factories.

## OMAHA MANUFACTURERS DESERVE OMAHA PATRONAGE



Ask the dealer, the next time, if it was made in Omaha. Tell him you prefer to keep your money at home where it will help Omaha grow.