

BRIEF CITY NEWS

"Townsend's for Sporting Goods." Fashion's Supplies, Jas. Morton & Son Co. Lighting Fixtures—Burgess-Granden. Baltimore Silver—Edholm, Jeweler. Have Root Print It—New Beacon Press. Dr. Stokes removed to 474 Brand. The Auto Tire Chain, Jas. Morton & Son Co. To Borrow Money on real estate, see J. H. Dumont & Co., Koelline Bldg.

"Today's Movie Program" classified section today. It appears in The Bee EXCLUSIVELY. Find out what the various moving picture theaters offer.

Cleaning Firm Cleaned Out—Joe Kolnick's cleaning establishment at 1611 Cumming street, was broken into Sunday night and a considerable quantity of apparel taken.

Drug Store Robbed—By breaking the glass of the side door in the United-Docekal Drug company, 125 Farnam street, Sunday night, thieves gained entrance to the establishment and stole \$1 in cash.

Ad Club Meeting—At the Omaha Ad club's weekly noon luncheon meeting at the Paxton hotel today Penn P. Podrea, advertising and sales manager of the Iken Blacut company, will be the speaker.

Extend Spur Track—The Missouri Pacific Railway company will be permitted to extend a spur track along Fifteenth street from Webster to Cumming streets, for accommodation of industries in that locality.

The Cambro Welsh Society will hold its annual St. David's day entertainment at Jacobs hall, Dodge and Seventeenth streets, Tuesday evening, February 23. All the Welsh and Welsh descent are cordially invited.

Get Something to Eat—The Restaurant Specialty company, 415 South Eleventh street, was visited by thieves Sunday night, who gained entrance to the establishment through a rear window and carried away a quantity of merchandise.

Notice to Our Subscribers—We would like to get a copy of The Evening Bee issued October 4, 1915, and one of October 23, 1915, for our bound files. If you have one on your pantry shelf or elsewhere about the house or barn, will you please send it to us. THE OMAHA BEE

Packing House Men Get Eight Per Cent Raise in Their Pay

No disturbance marked the return of packing house laborers at the local packing house plants yesterday. The announced raise in wages of 8 per cent for all classes of workmen took effect at the beginning of the day's labor. Final announcement of the raise in pay was made to the workmen.

"The raise in pay will average 8 per cent all around on all classes of workmen," General Manager R. C. Howe of the Armour plant stated. "There has been no disturbance and is not likely to be one here."

St. Nicholas Story by Omaha Writer

In the March St. Nicholas, just out, one of the features is an article, "How a Boy Secured a Unique Mark Twain Autograph," contributed by Victor Rosewater, editor of The Bee. The magazine reproduces in facsimile the autograph in question, which shows a dual signature as "Mark Twain" and "S. L. Clemmens," crossing so as to cut one another in twain, along with a narrative of the manner in which it was secured during the winter of 1893, when Mr. Rosewater was serving as a page in the United States senate and Mr. Clemmens was in Washington in the interest of an international copyright measure.

OMAHANS WILL TAKE AUTO TOUR ON PACIFIC COAST

Glenn C. Wharton is on a six weeks' trip to the west. He will visit many of the coast cities on business. In Spokane he will meet Mosher G. Colpeter and tour of California. He will arrive home March 31. Mrs. Glenn C. Wharton and Mrs. Mosher G. Colpeter have gone to Pattle Creek, Mich. They will go from there to Baltimore, New York and other eastern cities, returning to Omaha in about four weeks.

DOUGLAS COUNTY FARM BRINGS A BIG PRICE

Records show that a profit of approximately \$1,000 per year has been made for the last eleven years by Henry Kuehl and wife through the sale of their farm on the West Dodge road, five miles from Dundee. They have just transferred it to Willard D. Hooford of Omaha. The consideration was \$17,500. Eleven years ago Kuehl bought the tract for \$6,250. It consists of eighty acres, so the present selling price puts a valuation of almost \$20 per acre upon the land.

FRANK McLAUGHLIN IS ON TRIAL FOR MANSLAUGHTER

Frank McLaughlin, formerly a watchman employed by Joseph Byrne of the South Side, is on trial on a manslaughter charge in criminal court, accused of killing the son of his employer. McLaughlin engaged in an altercation with young Byrne in a South Side saloon late at night, several months ago, and in the course of the discussion pulled a gun and shot. Byrne died the next day. The morning was taken up with examination of jurors.

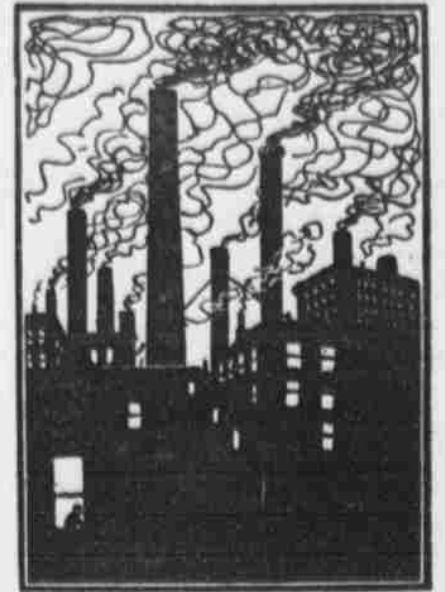
The Easiest Way To End Dandruff

There is one sure way that never fails to remove dandruff completely and that is to dissolve it. This destroys it entirely. To do this, just get about four ounces of plain, ordinary liquid arvon; apply it at night when retiring; use enough to moisten the scalp and rub it in gently with the finger tips. By morning, most if not all of your dandruff will be gone, and three or four more applications will completely dissolve and entirely destroy every single sign and trace of it, no matter how much dandruff you may have.

You will find, too, that all itching and digging of the scalp will stop instantly, and your hair will be fluffy, lustrous, glossy, silky and soft, and look and feel a hundred times better.

You can get liquid arvon at any drug store. It is inexpensive and four ounces is all you will need. This simple remedy has never been known to fail.—Advertisement.

Nearly \$100.00 for Every Omahan



That's What Wages and Salaries Paid by Omaha Factories Would Be

Omaha manufacturers paid approximately \$17,000,000 during 1915 in wages and salaries to their employees. The combined payrolls of the Omaha factories, if divided equally among the people of this city, would mean nearly \$100 for every man, woman and child.

Pretty good showing, don't you think? The manufacturers think so. They are mighty proud of it, and they don't care who knows it. They have increased the size of the factory payroll fully \$2,000,000 since 1909, and made nice gains each year. No rival city has done so well.

But that isn't the main reason why Omaha manufacturers are proud of their payroll. They know that the money they spend in this way goes to clothe and feed thousands of persons; in fact, a large per cent of the city's population; it sends children to school, makes payments on homes and performs countless other necessary functions. They know it has become one of the most important factors in the upbuilding of this community, touching, directly or indirectly, practically every person here.

The manufacturers are glad they are able to spend this large sum in wages and salaries. They are glad they can employ so many persons and pay so much for their work. But they believe they should have a larger payroll and be a more important factor in the community. They know they can if the people of Omaha will help them.

The manufacturers only ask that you co-operate with them. You need not make a single sacrifice. All you need to do is choose Omaha-Made goods when these equal in quality and price the products of other cities. Then you will be doing your part to help the payroll builders.

In urging Omaha people to buy Omaha-Made goods, the manufacturers ask nothing that they themselves would not do. No manufacturer would ask his neighbor to buy goods from his factory if the quality was lower or the price higher than the products from other cities that the neighbor could buy.

But Omaha manufacturers know that the quality of their goods is as high, often higher, than the quality of products made anywhere else in the world. They know the prices of their goods are as low, frequently lower, than prices of products made anywhere else. The reason they know this is because Omaha-Made goods sell in every state in the union, and in foreign countries, in competition with all comers.

With the question of quality and price settled, the manufacturers believe that they make a purely business proposition when they ask Omaha people to patronize Omaha factories. They know that they can give home folks better quality for the same money, and the same quality for less money. For there are no freight charges added to the selling cost to Omaha people.

There is another reason why it is a business proposition. When Omaha folks buy Omaha-Made goods they keep Omaha money at home. And Omaha money spent in Omaha means more work and better times for Omaha people.

BAG MANUFACTURERS
BENTON-OMAHA BAG CO., 11th and Jackson Sts., Douglas 1109.

BOILER MAKERS
DRAKE-WILLIAMS-MOUNT CO., 234 and Hickory, Douglas 1042.

BOTTLETS
OMAHA BOTTLE CO., 615 So. 11th St., Douglas 1100.
SLOUP-SHERREY BOTTLE CO., 1509 Webster St., Douglas 7398.

BOXES—PACKING
OMAHA BOX CO., East Omaha, Webster 412.
EGGERS-O'FLYING CO. (Omaha Fibre & Corrugated Box Co.), 15th and Leavenworth, Douglas 1139.

BREWERS
STORM BREWING CO., 1819 Sherman Ave., Webster 221.
METZ BREWING CO., 6th and Leavenworth, Douglas 1498.
FRED KRUG BREWING CO., Krug Avenue and Boulevard, Tyler 450.
JETER BREWING CO., 30th and Y Sts. (South St.).
WILLOW SPRINGS BREWING CO., 34 and Hickory Sts., Douglas 1308.

BRICK MANUFACTURERS
HYDRAULIC PRESS BRICK CO., 1205 W. O. W. Bldg., Douglas 908.

BUTCHERS' AND PACKERS' TOOLS
C. E. LIVER & CO., 1519 Capitol Ave., Douglas 619.

CASCO POULTRY AND CHICK FEED, CORN MEAL, ETC.
CASCO MILLING CO., 14th and Paul Sts., Phones: Doug. 1478 or 972.

CEMENT BLOCK MANUFACTURERS
OMAHA CONCRETE STONE CO., N. W. Cor. 25th Ave. and Sahler, Webster 880.

CONFECTIONERY
D. J. O'BRIEN CO., 221-11 Douglas St., Douglas 531.
VORGELE & BIRNING CO., 1214-15 Jones St., Douglas 502.

COUCHES AND MATTRESSES
E. G. DODD CO., 1201 Nicholas St., Douglas 1400.

COFFEE, TEA AND SPICES
FARMER-OLSON CO., 112 So. 11th St., Douglas 2332.
GERMAN-AMERICAN COFFEE CO., 1117-19 Dodge St., Douglas 7125.

CRACKER MANUFACTURERS
ITEN BISCUIT CO., Capitol Ave., 19th to 12th Sts., Douglas 2125.

CRAVATS, BELTS, PURSES, POCKET BOOKS AND SUSPENDERS
SMITH, LOCKWOOD MFG. CO., 2222 South 19th St., Douglas 6351.

CREAMERY COMPANIES
FAIRMONT CREAMERY CO., 13th and Jones Sts., Douglas 1401.
WATERLOO CREAMERY CO., 1617 Howard St., Douglas 1409.

COMMISSION, PRODUCE, ETC.
KIRCHBAUM & SON, INC., 1209-11 Howard St., Douglas 434.

DISTILLERS
KLE & CO. WILLOW SPRINGS DISTILLERY, 221-3 Howard St., Douglas 954.

ELECTRIC COMPANIES
OMAHA ELECTRIC LIGHT & POWER CO., U. F. Bldg., Douglas 1022.

ELECTRICAL SUPPLIES AND LIGHTING FIXTURES
BURGESS-GRANDEN Co., 1511 Howard St., Tyler 621.

ENGRAVERS—ELECTROTYPERS
BAKER BROS. ENGRAVING CO., 1215 Howard St., Douglas 2522.

ENVELOPE MANUFACTURERS
BURELEY ENVELOPE CO., 417 So. 12th St., Douglas 591.

FIXTURES
OMAHA FIXTURE & SUPPLY CO., 414-16-18 So. 12th St., Douglas 2794.

FLOUR MILLS
UPDEKE MILLERS CO., 1212 Sherman Ave., Webster 62.

FOUNDRIES—Casting and Sash Weights.
OMAHA FOUNDRY COMPANY, 107 Jackson St., Douglas 2422.

FUR GOODS
NATIONAL FUR & TANNING CO., 1225 So. 13th St., Tyler 120.

GAS COMPANIES
OMAHA GAS CO., 1009 Howard St., Douglas 605.

HATS
OMAHA HAT FACTORY, 1221 Douglas St., Douglas 4524.

ICE DEALERS
PEOPLE'S ICE & COLD STORAGE CO., 1224 Chicago St., Douglas 55.
OMAHA ICE & COLD STORAGE CO., McCague Bldg., 19th and Dodge Sts., Douglas 455.

ICE MACHINES
BAKER ICE MACHINE CO., 19th and Nicholas Sts., Douglas 1821.

LAUNDRIES
MONTFARIEL LAUNDRY Co., 1708 Vinton St., Douglas 2560.
KIMBALL LAUNDRY CO., 1207-09-11 Jackson St., Douglas 919.
FURMAN LAUNDRY, 2208-12 Farnam St., Harney 1771.

LEAD WORKS
LAWRENCE SHOT & LEAD CO., Factory South Omaha, Douglas 1923.

LODGE SUPPLIES
LODGE SUPPLY CO., 1111 Farnam St., Douglas 4160.

MACARONI
SKINNER MANUFACTURING CO., 14th and Jackson Sts., Tyler 1928.

MONUMENTS
J. F. BLOOM & CO., 1708 Cumming St., Douglas 974.

FURNACES
STANDARD FURNACE & SUPPLY CO., 411-13 So. 12th St., Douglas 2027. (Heats all cast and water all steel furnaces.)

MIRRORS and ART GLASS WINDOWS
MIDLAND GLASS & PAINT CO., 11th and Howard, Douglas 791.

OILS
E. V. NICHOLAS OIL CO., 204 Baird Bldg., Douglas 922.

PACKING HOUSE PRODUCTS
SWIFT AND COMPANY, South Omaha, South 2220.
PLANING MILL
BANKERS REALTY INVESTMENT CO., Ground Floor Bee Bldg., Douglas 1224.

PRINTERS—BOOK AND JOB
OMAHA PRINTING CO., 19th and Farnam, Douglas 144.
CORRY & MCKENNA, 1407 Harney St., Douglas 2544.

SADDLERY
J. E. KAWY & CO., 313-17 South 19th St., Douglas 629.

STARCH MANUFACTURERS
DEFIANCE STARCH CO., 2550 Cumming St., Douglas 170.

SERUM MANUFACTURERS
O. K. SERUM CO., 2235 E. St., South Omaha, South 452.

AXTELL SERUM CO., South Omaha, South 523.
GRAIN BELT SUPPLY CO., Lobby Exchange Bldg., South Omaha, So. 3554, South Omaha, South 2228.

TANKS, CULVERTS, GRAIN BINS, AND OIL DRUMS
NEBRASKA & IOWA STEEL TANK CO., 1301 Spruce St., Webster 278.

TENTS AND AWNINGS
SCOTT-OMAHA TENT AND AWNING CO., 11th and Harney Sts., Doug. 522.

TIN CANS AND SHEET METAL
GORDON LAWRENCE CO., 6th and Dodge Sts., Douglas 602.

WOOD WORKS
OMAHA WOOD WORKING CO., 1261 Harney St., Douglas 2544.

WHOLESALE GROCERIES
PAXTON & GALLAGHER, 701-11 South 14th St., Douglas 222.

OMAHA MANUFACTURERS DESERVE OMAHA PATRONAGE

