

OTIS ELEVATORS IN GRAIN EXCHANGE

Every Safety Device Possible Placed on Cars to Guard Passengers from Accidents.

PUBLIC GETS BEST SERVICE

In its elevator arrangement the Omaha Grain exchange has few rivals. No expense has been spared to make the system the safest, most comfortable and convenient that could be installed. Three large, roomy cars, all running during business hours, give the public the best of service.

The Otis Elevator company furnished and installed the complete equipment. Every type of elevator is manufactured by this company, their installations being in the Woolworth building, New York, the highest in the world; also the Singer and Metropolitan Life buildings, and in thousands of other structures the world over.

A broad territory is covered by the Otis people, their business extending beyond the borders of the United States into the foreign countries. Factories are in Yonkers, N. Y.; Harrison, N. J.; Chicago, Houston, Tex.; Philadelphia, Buffalo and Berlin. The works at Albert, France, were recently demolished by the fighting armies.

Omaha has been made the distributing point for the entire middle west by the Otis Elevator company and they occupy a spacious three-story building at the northwest corner of Twelfth and Jackson streets. R. W. Gardner, vice president of the company, is general manager of the local company.

Updike Concerns Strong in Their Big Business Way

The Updike Grain company is a very large firm, indeed, on the grain exchange. It is one of the sixteen charter members of the exchange. This company is incorporated with a paid up capital stock of \$1,000,000.

By reason of its strength and its straightforward dealings over a number of years it enjoys a large business and receives grain shipments from a large territory and an extensive clientele.

N. B. Updike is president of the company, E. Updike, vice president; C. L. Babcock, secretary; E. A. Cope, treasurer, and F. A. Howard, superintendent.

The Missouri Valley Elevator company does a big business in wholesale grain in this part of the country and through the Omaha Grain exchange. N. B. Updike is its president, O. M. Smith, vice president and general manager, and C. L. Babcock, secretary. The company has elevator capacity amounting to a total of 750,000 bushels, located at Missouri Valley, Ia.

The Updike Elevator company is a big concern that deals in wholesale grain and has grown up with the country. The president of the company is E. A. Cope, vice president is N. B. Updike and the secretary-treasurer is C. L. Babcock. The company's elevator capacity is 750,000 bushels, the elevators being located on the South Side.

Locks on Doors Are All of Special Type

A number of Omaha's new buildings in the last few years have been equipped by Milton Rogers & Sons company with Sargent locks and hardware.

The Woodmen of the World building is one of these and the latest big building so equipped is the new Omaha Grain Exchange building. The locks used on this building have been made especially for it. It is not the usual mortise type of lock. It is called Sargent's union lock, being formed of an outside and an inside part which contains the works. These are bolted together easily on the door, avoiding the use of screws and saving much time in application.

An elaborate keying arrangement of master and grand-master keys has been worked out to suit the needs of this particular building.

The design and finish of the hardware are well suited to the character of the building and add much to its beauty and substantial appearance. The doors are all equipped with Sargent's new door check and spring. The checking arrangement of this is so controlled that the door will swing slowly all the way shut or quickly to a point within a few inches of the jamb, as desired.

The hardware throughout the building was chosen not only for its decorative value, but for its dependable and permanent service.

Huntley Is Charter Member of Exchange

E. E. Huntley, who occupies handsome offices at 638 in the new exchange building, is a charter member of the Omaha Grain exchange and has always been active in the work of the institution. He executes a general commission business of a large clientele distributed through the country. He represents, also, the J. Rosenbaum Grain company of Chicago and buys grain for the Quaker Oats company.

BEMIS OMAHA BAG MAKES MILLIONS OF BAGS YEARLY

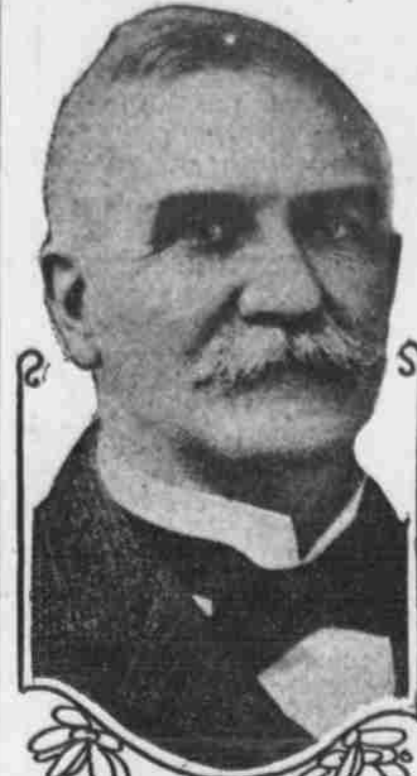
The Bemis Omaha Bag company is a very important factor in connection with the Omaha Grain exchange, for a great many bags are needed to put that grain in.

The Bemis Bag company was organized in St. Louis back in 1888 and has been growing ever since. The Omaha factory was built in 1898 and has been added to since that time until now its capacity has increased over 300 per cent. The annual output at the Omaha factory now exceeds 2,000,000 bags of various kinds, valued at more than \$2,500,000.

A. F. Bemis is president of the company, J. S. Bemis is treasurer and H. H. Allen is secretary. There are about 275 employees and the product is sold all over the west.

The Three Londons.
Roman London lies buried about eighteen feet below the level of Cheapside. In nearly all parts of the city there have been discovered tessellated pavements, Roman tombs, lamps, vases, sandals, keys, ornaments, weapons, coins and statues of the Roman gods.
When, a little over a century ago, deep sections were made for the sewers in Lombard street, the lowest stratum was found to consist of tessellated pavements.

TWO STRONG MEN IN THE RANKS OF THE HUSTLERS.

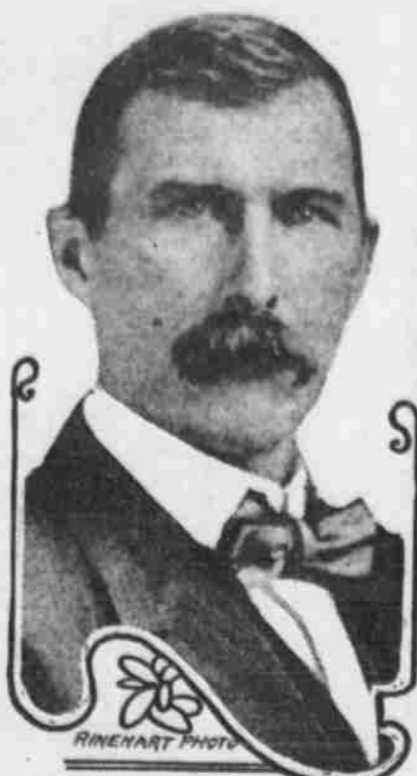


J. B. Blanchard



C. E. Niswonger

Members of a Well Known Firm



W. B. Weeks



C. L. Weekes

Merchants National One of Big Factors

The Merchants National bank was founded October 1, 1882, and has been a growing banking institution from that day to this.

The first bank building used was located at the northwest corner of Thirteenth and Farnam streets, just across the street to the west of the present structure. Luther Drake, who is president of the big bank now, was a young assistant cashier of the bank when it started. The other officers of the bank at its beginning were: Frank Murphy, president; S. G. Rogers, vice president, and R. E. Wood, cashier.

The institution prospered so well that in 1888 it built the present large banking building into which it moved and where it has since been housed. This bank transacts a very large percentage of the Omaha Grain exchange business. It has a capital of \$500,000, with surplus and undivided profits of \$800,000.

The officers are: Luther Drake, president; Frank T. Hamilton, vice president; Fred P. Hamilton, cashier; B. H. Melle, assistant cashier; S. S. Kent, assistant cashier, and Fred Cuscaden, assistant cashier.

FOR ABSOLUTE SATISFACTION On Your CONSIGNMENTS TRY

WE LIVE UP TO OUR NAME.

J. H. CONRAD

Grain and Feed Conscientious Service

Established 1884

215 Grain Exchange

The "Grain Dealers Way"

The "Grain Dealers" is a Mutual fire insurance company that specializes on country elevators. By its system of selection of risks and rigid inspection, it has grouped together the better class of elevators in the country. It does not try to interest the man who is looking for something cheap; nor is its service extended to those who think that their business entitles them to lower rates than others; but the man who is willing to co-operate with his neighbor to reduce the burning ratio of country elevators will be more than satisfied with a "Grain Dealers" policy.

While the general loss ratio of the country shows no material reduction, due to the better construction of the risks it insures, the "Grain Dealers" has lowered its basis rate forty-eight points in thirteen years, while its cost has been cut 62% during that time, due to better care and a reduced loss ratio.

If you wish our inspection service extended to your property WRITE, WIRE, PHONE OR CALL



INDIANAPOLIS, IND.
FITZGERALD & MCCOOTER, Western Managers,
307 Omaha Grain Exchange.
Better Construction—More Care—Fewer Fires.

J. B. Blanchard

C. E. Niswonger

Blanchard-Niswonger Grain Company

Consignments and Correspondents Solicited.

Office, 500-503 Grain Exchange

Phone Douglas 4054

OMAHA, NEB.

Members Omaha Grain Exchange

W. B. WEEKES

C. L. WEEKES

Weekes Grain Co. Consignments

Write, Wire or Phone Us For Prices Delivered at Your Station

WHEAT CORN OATS FOR SALE

Omaha, Nebraska

324
326
Omaha Grain Exchange

Phone Douglas 1006

J. B. SWEARINGEN, Pres.

A. HEDELUND, Sec'y.

J. G. WILD, Solicitor.

THE

United Grain Company

(Incorporated)

We Are Not Buyers of Grain —Commission Only—

When Consigning to Omaha, Give Us a Trial

434-435 Omaha Grain Exchange

Telephone Douglas 5031

OMAHA, NEBRASKA