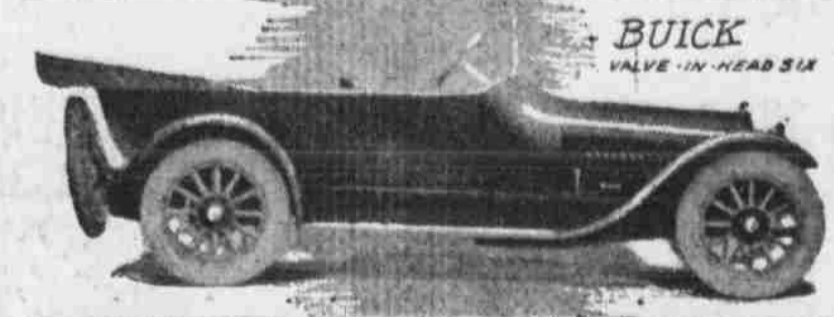


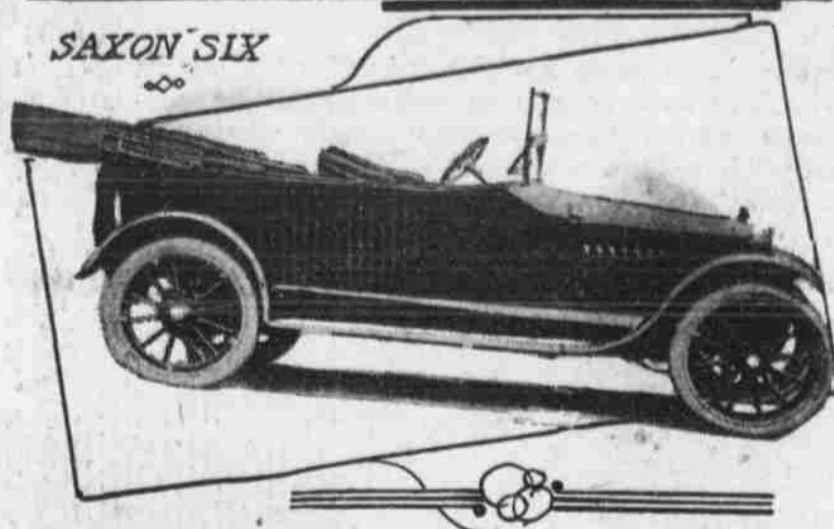
Three of the Six-Cylinder Beauties Built for Service



KISSEL SIX-42
3-DOOR TOURING CAR.



BUICK
VALVE-IN-HEAD SIX



SAXON SIX

Marmon Shows Big Change in Its Motor and Also the Body

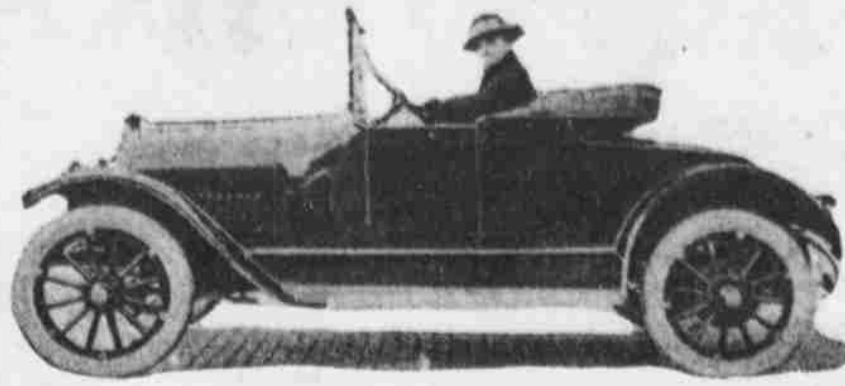
One of the most notable instances of the "game" industrial concern has come to light with the announcement of the Marmon "34" for 1916 displayed for the first time at the New York Automobile show. The car is almost a complete revolution in motor and body building and is the result of four years of unremitting toil. The Marmon engineers were told to "go the limit" and they have produced just such a car as such an order would inspire. But in four years there was the chance of a fortune to go the wrong way. There was a chance that the experimentation would result differently than they expected. But the judges of the Marmon official circle proved worthy for the "34" has come through the fire of thorough trial without a scratch and bids fair to remain at the head of the list of high grade self-propelled vehicles.

Vellie Will Display New Models at Show

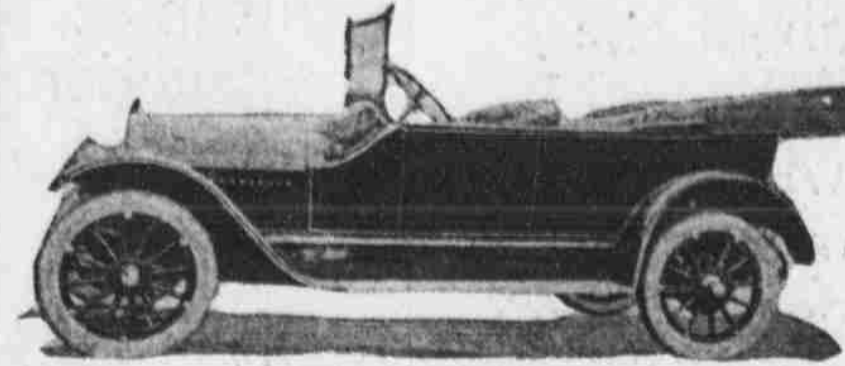
One of the most interesting exhibits at the Omaha Automobile show will be that of L. E. Doty company, incorporated, representing the Vellie "Hiltwel" six line of motor cars.

The center of the display is to be a highly polished six chassis, so arranged as to show to good advantage all the working parts of the motor and features of accessibility which have been so carefully worked out for the car owner's benefit and economy. The stripped chassis will naturally reveal all those parts which are concealed when the complete car is assembled. The great majority of show visitors will

Fine Type of Autos Which Are Now Being Made in This City



DRUMMOND ROADSTER.



DRUMMOND TOURING CAR.

turn to the Vellie six touring car as the most interesting finished car since so much has been said of its value and quality. The show car will be finished exactly as any stock car, that one may not

be misled as to what is to be expected in his purchase. Unquestionably the real leather, superb painting and equipment of this Vellie model will command favorable comment.

Slight Changes in New Series of Pierce-Arrow Co.

The soundness of Pierce-Arrow policy in working with no other impulse than the desire constantly to produce a bettered car, finds its demonstration and vindication in the very slight changes between Series Three and Series Four, the latter the latest offering of the company being introduced in this year's show.

The whole conservative system of manufacture which demands that there must be sound reason for every departure, and that changes will never be made merely to obtain selling arguments, has so steadily lessened the total of alterations that the dividing line between the various series has almost reached the vanishing point.

In the early stages of the designing and production of cars there were still valuable changes to be made and the era of experiment inevitably prevailed. But out of a gradually increasing understanding of automobile construction, the

Pierce-Arrow company steadily evolved its present combination of mechanically consistent motor, artistic lines and luxurious appointments. Finally the company did away with yearly models rather than pretend to the public that there could every twelve months be made changes sufficiently radical to warrant the purchase of a new car.

With this decision came the idea of series to identify the occasional new cars. Types now virtually merge one into the other. Thus the description for the chassis of Series Four is identical, word for word, with the detail of the chassis of Series Three.

In spite of extended experimenting with varied types of motor it has not been deemed possible to make changes that would add anything to the power, smoothness or reliability of the Pierce-Arrow engine. The six-cylinder engine is giving as much as 4,000 miles without need of overhauling.

He Beat a Horse.

Edgar Apperson, secretary and treasurer of Apperson Brothers Automobile company, isn't an old man by any means, and still he can remember the time when a newspaper, in speaking of the speed he made in an early automobile, said that he "had actually beaten a horse."

Willard

See The Point?

The biggest argument for Willard Battery Service is the fact that it saves a lot of repairs that would be necessary otherwise. Let us show you.

Nebraska Storage Battery Co.
2303 Farnam St. Tel. Doug. 5102.

Free inspection of any battery at any time

Lynite Aluminum to Take the Place of Iron and Steel

American engineers have been quick to take advantage of the fact that aluminum has been put to in the European war and already several of the leading automobile manufacturers are planning on the substitution of lynite aluminum in many instances for iron and steel.

The Nordyke & Marmon company during the last year developed a power plant made almost wholly from lynite aluminum. The cylinder castings are of lynite aluminum except the part next to the pistons, which consists of a hard iron sleeve slipped into the casting and easily removed if for any reason this should become necessary. By the use of lynite aluminum the Marmon company has produced a power plant which weighs from 200 to 400 pounds less than the ordinary cast iron and steel motor. The use of the lynite aluminum piston had a wonderful effect on endurance of the new Marmon motor. Not only had its flexibility and horsepower increased from 10 to 20 per cent, but the wear and

tear on the connecting rod bearing had been reduced over 50 per cent.

As a result of the Marmon success, the Aluminum Castings company of Cleveland has been "awarded" with orders aggregating more than 750,000 lynite pistons for use in 1916.

Mr. E. E. Allyn, president of the Aluminum Castings company of Cleveland, who has been one of the foremost exponents of the use of aluminum as a substitute for iron and steel in the construction of the automobile, predicts that 1916 will see light metals become as great a factor in the success of the pleasure car as aluminum now is in the success of the great war planes used in the European war.

DRIVER CAN EASILY SEE THE SPEED OF THE AUTO

Among the several gauges, meters, etc., adorning the present day motor car, if there is any single one which it would seem should be easily and quickly read, it is the speedometer.

An example of the care exercised in this direction is seen in the Cadillac. The speed indicator is set in the instrument board directly in line with the driver's vision, so that he can see it without moving his head, and scarcely needs take his eyes off the road.

*The result of
23 years' successful
experience in
building motor cars*



America's Greatest "Light Six" \$1385

Visit Booth 25 at the Show and See

America's Greatest "Light Six" \$1485

AMERICA'S GREATEST "LIGHT SIX" is no idle claim when applied to the Haynes "Light Six." What other car is so flexible as to go one to sixty miles per hour on high? What other car runs under all conditions, from 15 to 22 miles on a gallon of gas? What other car can pick up a speed of 30 miles per hour in seven and a half seconds from a standing start? What other big car will average 8,000 miles to a set of tires, and 400 miles to a quart of oil? THE HAYNES MOTOR, WITH CYLINDERS 3 1/2 x 5, WILL DEVELOP MORE POWER THAN ANY OTHER MOTOR OF ANY MAKE OF EQUAL BORE AND STROKE. How could there be greater efficiency? Get behind the wheel of the Haynes "Light Six," and you will quickly understand why it is called America's Greatest "Light Six."



See the Haynes at the Show and Place Your Order Quick

At no time during the past two years have we been able to supply half the demand for the Haynes "Light Six." During the past year Haynes cars have totaled 47% of the production of the entire state of Indiana—one of the great car manufacturing states.

Now's the time to order your Haynes — so as to get the car of your first choice. History is repeating. More people will want the Haynes "Light Six" this spring than can get them. But placing your order now will insure delivery of your car at an early date.

America's Greatest "Light Twelve"

This beautiful new car is Haynes quality through and through. Behind its twelve purring cylinders you get a joy of driving you've never before known—just one long sweep, up hill, down hill, everywhere, with no vibration. The Master Motor of this car has valve-in-head construction, aluminum pistons, and all the latest engineering developments. See this engine mounted for your inspection at the show. The body is the same as the luxurious Haynes "Light Six."

Nebraska Haynes Auto Sales Company 2032 Farnam Street.

THE HAYNES AUTOMOBILE COMPANY, KOKOMO, INDIANA

Haynes "Light Six" Prices

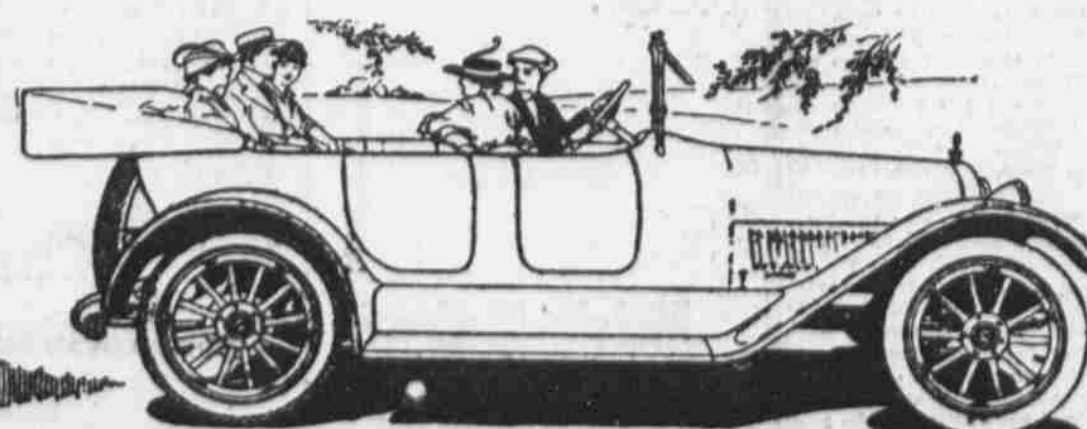
Model 24—Three-Passenger "So-Sha-Belle" Roadster \$1,485
Model 26—Five-Passenger Touring Car \$1,485
Model 28—Three-Passenger "So-Sha-Belle" Roadster \$1,485
Model 27—Seven-Passenger Touring Car \$1,585

Haynes "Light Twelve" Prices

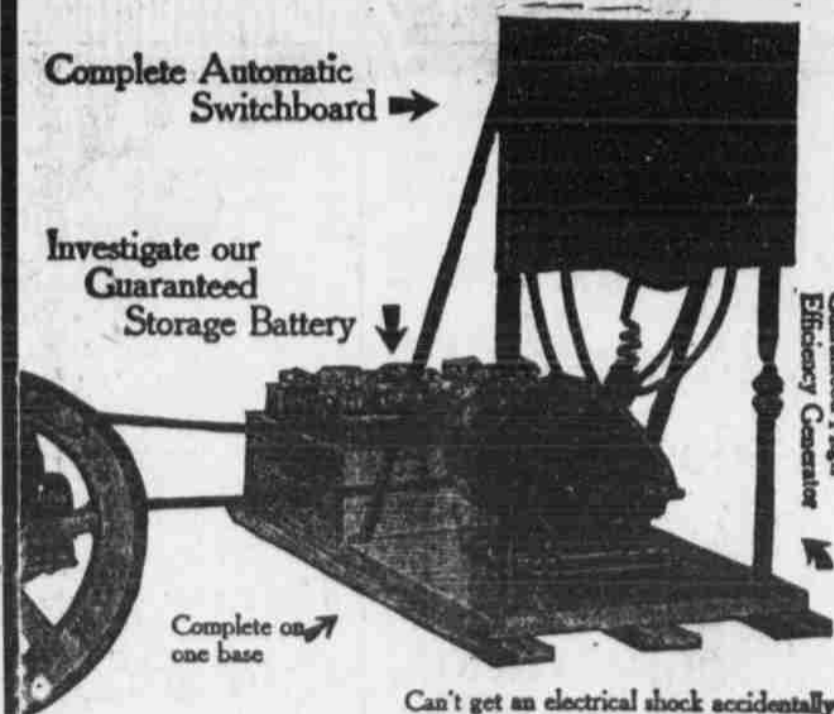
Model 40—Five-Passenger Touring Car \$1,985
Model 42—Three-Passenger "So-Sha-Belle" Roadster \$1,985
Model 41—Seven-Passenger Touring Car \$1,985
All Prices F. O. B. Kokomo.

See the Haynes Before You Buy Your Car

See the Haynes, ride in it, test it out—and we will leave it to your own judgment if it is not the biggest buy in the "light six" field.



Light Homes are Happy Homes



Own your Electric Light Plant for light and household use. Operate it to suit yourself. Economical. Healthful. No danger of fire or explosion.

ALAMO ELECTRIC FARM LIGHT PLANTS

See panorama of our Modern Farm in basement Automobile Show. Ask us about the agency of the Farm Light Plant with guaranteed Storage Battery.

**Rock Island Plow Company
OMAHA**