

## NATIONAL HIGHWAY TWELVE IS ON DECK

"All Factory Promises Made Good,"  
Says L. J. Traynor About  
Car.

### TRIBUTE TO OMAHA MARKET

The object of the most discussion among "National" automobile dealers, the National Highway "12," arrived Friday and was pronounced the fulfillment of all factory promises by L. J. Traynor.

Owing to the shortage of materials for certain parts there are only a limited number of these cars in operation at the present date, and the demonstrator which is in Omaha now will be here for a few days only. It may be added here that the Traynor Automobile company was one of the first to be allowed the use of the demonstrator which is being sent through the western territory. This is a high tribute to the Traynor Automobile company and to Omaha as an automobile market.

A. Schaub, official demonstrator of the National factory, is as proud of the "new job," as he calls it, as a man is of his first boy. Unlike many men at the steering wheel much of the time, Mr. Schaub seems to get real pleasure out of taking the new National through "the paces." The manner in which Mr. Schaub makes the new car perform puts one in mind of a spirited horse in a circus ring. Every touch is met with instant response. Mr. Schaub made the statement that the car could be turned around in thirty-three feet, and then proceeded to prove it to the doubtful occupants of the car.

In climbing a hill on high, Mr. Schaub started at ten miles per hour, went about half way up and then slowed down to between three and four miles to finish the climb. Among the distinctive features of the new car is high tension magneto, made especially for the National. The National, it is claimed, is the first car of more than six cylinders to have this type of ignition. Another distinct advantage is the arrangement of the valves. All valves are located outside the V-shaped cylinder block, making them easily accessible.

It is interesting to note that the National's latest design has gone back to the 125-inch wheel base.

### Speedy National Cars Are Becoming Popular with Women

Due, no doubt, to their associations with racing, which is certainly no pink tea affair, National cars have always been known as a real "men's" proposition. There is a certain style and distinctive appearance about the National that has caused it to be known as an aristocrat among automobiles, carrying an appearance of more masculinity, perhaps, than any other extremely high grade car. As the National design has trended towards refinement, it has avoided effeminacy. The lithe, low-lined body design of the National today tells of the racing proclivities of its ancestors. The National is a car with fight in its blood and strength in its sinews, and with an outward appearance that bespeaks these inner characteristics.

"This year, more than ever before, have National cars been sold to women drivers," said George M. Dickson, general manager of the National Motor Vehicle company. "This is extremely gratifying as it has been our endeavor to put into the National every refinement, style and beauty that would appeal to lady drivers, and yet, at the same time, avoid any appearance of effeminacy."

Now that Nationals are proving to be favorites among the fair sex, does not mean that they are any less masculine in make-up than heretofore.

### Many Saxon Owners Drive Their Motors Across the Country

That the modern lightweight car is ideal for long trips, whether from state to state or across the continent, is shown by reports received by the Saxon Motor company from a number of owners.

An interesting feature in connection with these long distance journeys is the fact that two of them have been made by women. Mrs. Ella Wright drove a Saxon roadster from Jacksonville, Fla., to her home in Waterloo, Ia., much of the distance over rough country roads, particularly in Tennessee and Kentucky, where Mrs. Wright's car encountered an abundance of hills, ditches, rock strewn beds and boulders. She was accompanied by her son and lived out of doors day and night till Indiana was reached. Here Mrs. Wright met with a flood and from that time on began the hardest part of the trip, with roads of mud and water practically all the way across Indiana, Illinois and Iowa.

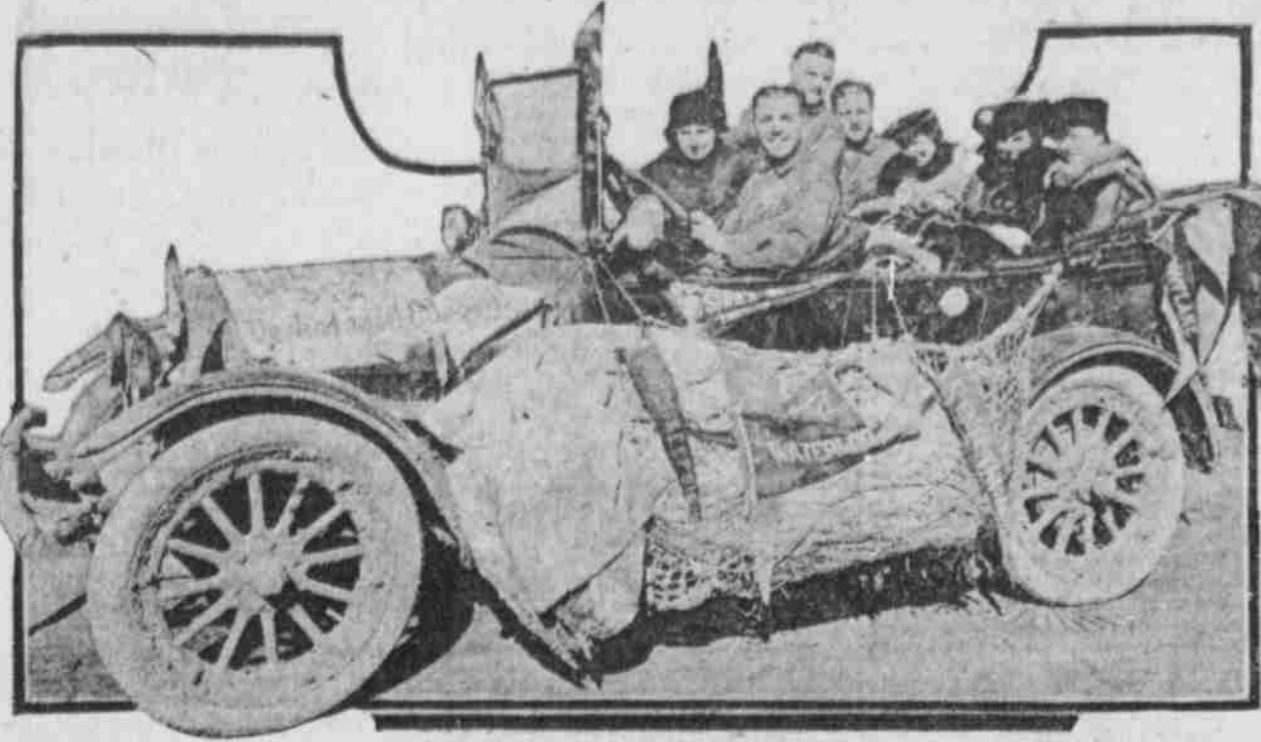
Another thrilling trip was made by Mrs. Emma T. Walsh, who drove her Saxon roadster from Fort Lauderdale, Fla., to Moline, Ill., a distance of 1,385 miles.

### LOTT NEW SECRETARY OF CHALMERS AUTO COMPANY

At the meeting of Chalmers' board of directors in Detroit Charles P. Lott, for the last fifteen years private secretary to Hugh Chalmers, was elected secretary of the Chalmers Motor company.

C. A. Pfeffer, vice president and assistant general manager of the Chalmers Motor company, who has previously fulfilled the duties of secretary, will turn over that portion of his work to the incoming secretary.

## To Cross the Continent Twice



### Overland '83' Stands Much Hard Use On Its Run from West

In true old western style "bitting the trails," M. W. Truss and party, consisting of Ed F. Coridan, Carl Sweeney and W. B. White, made the trip from San Francisco to New York. "Every Inch of this trip was made in an Overland model '83 and every inch of the trip was a pleasure," says Mr. Truss.

The young men who made the trip are all residents and business men of California and the trip was made purely as a vacation trip.

From all indications the Californians found a few dirt roads in each state through which they passed, and Mr. Truss swears that he can distinguish on the car seven different species of clay from seven different localities. One would hardly dare to dispute him, because he had the evidence with him, both on the car and in the car when the party pulled into Omaha.

Everywhere along the route enthusiasts donated pennants and the car, taking off the mud, closely resembled the room of one of our studious (?) college attendants.

Camping along the road was one thing the boys figured on and a complete camp equipment was tied to the side of the car. Frequent use was made of this equipment, particularly through the west, where towns and houses were few and far between.

Every one in the party is a strong booster for the Overland car. None of the boys making the trip were expert automobile men and it was just a happenstance that they picked an Overland. The trip was decided upon and the boys chipped in to buy the car. The Overland, Mr. Truss said, "looked good and kind of suited our 'pile.' I'm glad we picked it now. It would take some very clever salesmen to make me believe his car would take me anywhere I couldn't get with an Overland."

### Anita King Extends Six Hundred Miles to Her Long Journey

The plans of Miss Anita King, who is driving a KisselKar, alone from San Francisco to New York, have been radically changed. Instead of going directly from Albany to New York City, Miss King will turn back at that point making, in the order named, Binghamton, N. Y.; Scranton, Wilkesbarre, Reading, Lancaster, Pottstown, Norristown and Philadelphia, Pa.; Camden, Trenton, Princeton, Newark and Jersey City, N. J.

The detour, Miss King has made on her coast to coast drive increased the mileage more than 600 miles.

### Allen Completes Big New Factory

General Manager W. O. Allen of the Allen Motor company, Fostoria, O., accompanied by a coterie of his official workers, motored to Bucyrus recently to officials at a banquet in celebration of the completion of the new addition to the motor factory.

The increasing demand for Allen cars has brought about the necessity of an additional structure 150 by 100 feet in size, for the purpose of testing Allen-Sommer motors.

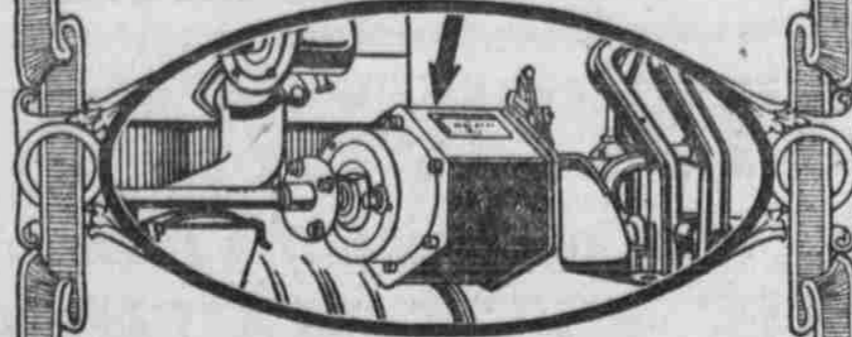
Advance ideas in factory building characterize the whole structure of concrete and steel as being well lighted, well ventilated, strictly modern and sanitary in every respect.

### COMISKEY WILL NOT GO TO THE COAST TO TRAIN

Private advice received in this city from Chicago say Charles Comiskey has finally made up his mind to switch the training trip next spring from California to Texas, says the Oakland Tribune. This action is not prompted by any dissatisfaction over conditions here, but because he believes that the western trip of the world's champions will take the edge off the public's welcome to the White Sox, and also because he thinks Californians have begun to tire of the White Sox clan.

# Maxwell

## The "Wonder Car"



### Electric Starting and Lighting

The new Maxwell is equipped with the Simms-Huff Electric Starting and Lighting System. This system is a single unit type, combining in one instrument the generator and motor. It is the simplest, "sure-fire" powerful self-starter made and has about one-half the wire of ordinary starters.

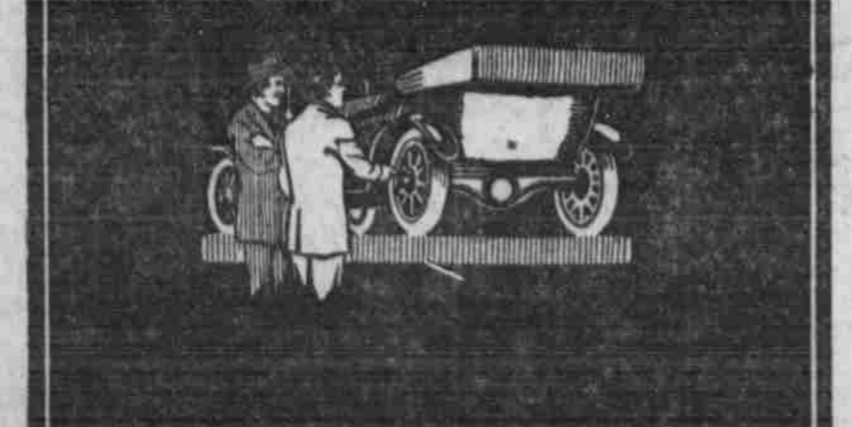
We are waiting to take you for a test ride in the car that has broken all low "First-Cost" records, and is breaking all low "After-Cost" records.

One Man Mohair Top \$655 Electric Starter  
Dismountable Rims \$655 Electric Lights  
Rain Vision Windshield Magneto Ignition  
P.O.B. DETROIT



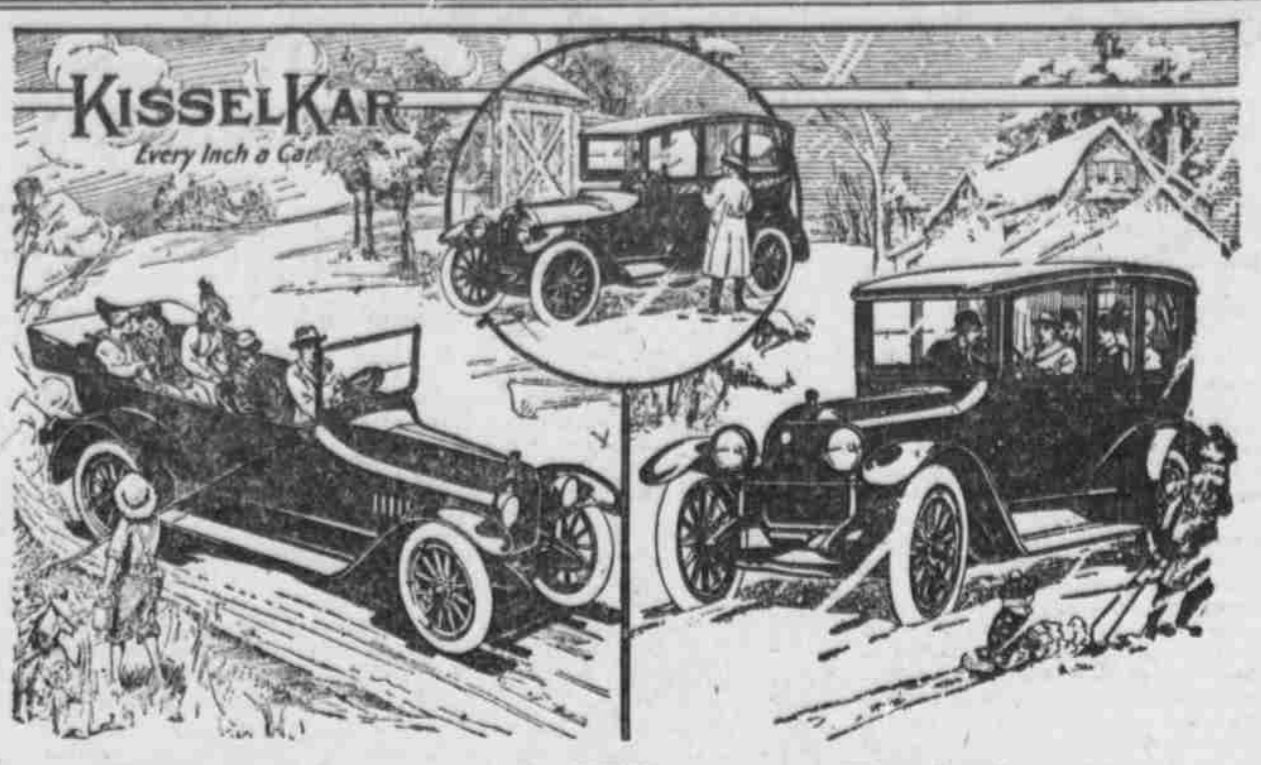
"Every Road is a Maxwell Road"  
C. W. FRANCIS AUTO CO.  
2024 Farnam Street, Omaha, Neb.

## AN ASSET TO ANY MOTOR CAR



# HYATT

## QUIET ROLLER BEARINGS



## Summer and Winter Driving-- Two Cars in One

The ALL-YEAR CAR—a Kissel idea—has brought to motoring a previously unknown degree of convenience, economy and service. In less than an hour's time—in your own garage—you can make the change from open car to closed coach—or vice versa. It gives you two complete cars in one—with every comfort and refinement preserved. No man who cares to enjoy the use of his car continuously—summer and winter—can resist the attractions of the ALL-YEAR Car.

# KISSELKAR

There is not much difference between the price of these quality cars—always identified with class—and cars that you have never expected to pay much for.

## The ALL-YEAR Car

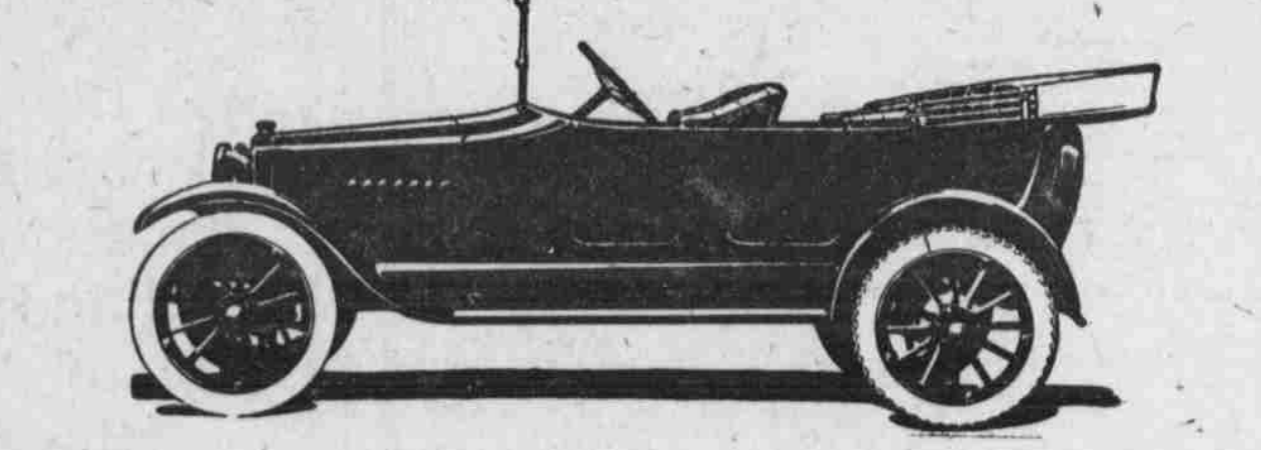
The exclusive ALL-YEAR idea is only one of many reasons for the purchase of a KisselKar. Around the superb Kissel-built motor is constructed a car that challenges the industry in those attributes that make for long life and comfortable service. Touring models—\$1050, \$1250, \$1485, \$1650. ALL-YEAR Cars—Coupes and Sedans—\$1450 to \$2000.

Don't wait—see the new KisselKars now and learn to know how much an ALL-YEAR Car will mean to you. We are closing our 1916 contracts with agents NOW. This is a very desirable and attractive proposition. Write us, or come and see us at once.

NOYES-KILLY MOTOR COMPANY, Distributors.  
2066-68 Farnam St., Omaha, Neb.

# SAXON "SIX"

## A big touring car for five people



## Power of a locomotive

Mighty, resistless power that seems capable of sweeping you on and on forever—that's the first thing you feel when you sit behind the wheel of a Saxon "Six."

You sense it in the motor's low, healthy purr. You feel it in the steady, even pull as the car gets under way. d

And then, when you step on the accelerator, what a revelation of power you get. The car leaps forward—eagerly, like a hound unleashed.

Speed is yours—as much as you want—with only a touch of the throttle. Hills are like level places. You romp up steepest grades without the slightest feeling of effort.

Saxon "Six" has proved its hill-climbing ability on all the famous testing hills of the country. In the Stamford, Conn. Hill Climb, it took first place. In the three-mile mountain road at Uniontown, Pa., it sped in 4 minutes and 4 seconds, defeating all cars in its price class and some that were higher priced. Ralph De Palma, the world's greatest racing driver, who completed,

"Four" Roadster	\$395	"Six" Touring Car	\$785
With detachable Coup Top	455	With detachable Limousine top	935
Delivery Car	395	"Six" Roadster	785

Noyes-Killy Motor Co.  
Distributors.  
2066 Farnam Street. Phone Douglas 8646.  
We Have a Very Attractive Dealers' Proposition.

Own your own home. You can purchase one on easy monthly payments like rent. Read the real estate columns.

## FORD OWNERS

\$10 Simplex Starter  
\$10 P & B Flexible Rider  
\$5 Safe Guard Hand Horn  
\$25 Total

### SPECIAL

During the rest of this month all three articles for  
**\$17**

## PHILLIPS & BETZ

1516 Davenport St., Omaha, Neb.