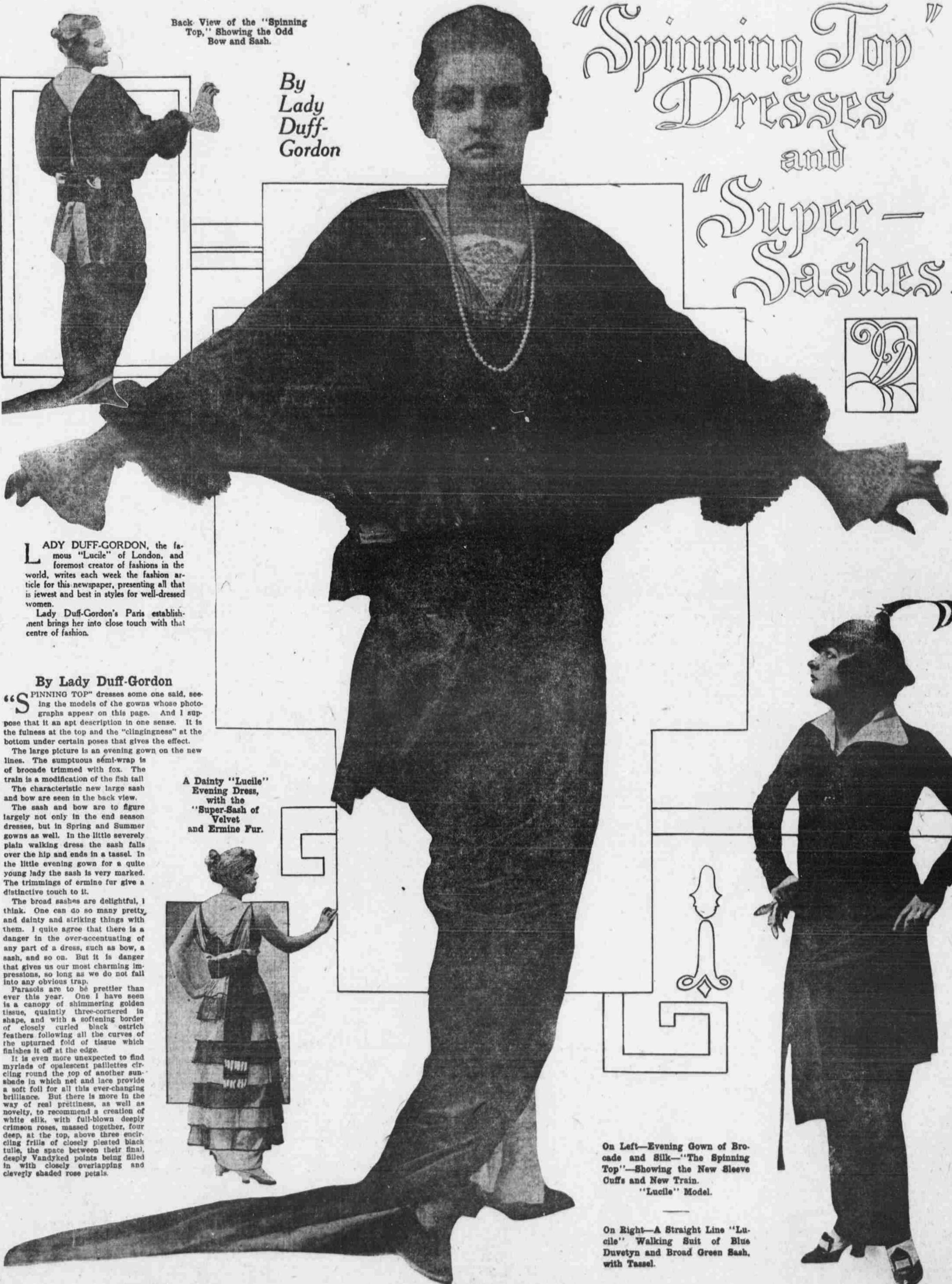


"Spinning Top" Dresses and

"Super-Sashes."

By
Lady
Duff-
Gordon

Back View of the "Spinning Top," Showing the Odd Bow and Sash.



LADY DUFF-GORDON, the famous "Lucile" of London, and foremost creator of fashions in the world, writes each week the fashion article for this newspaper, presenting all that is newest and best in styles for well-dressed women.

Lady Duff-Gordon's Paris establishment brings her into close touch with that centre of fashion.

By Lady Duff-Gordon

"SPINNING TOP" dresses some one said, seeing the models of the gowns whose photographs appear on this page. And I suppose that it is an apt description in one sense. It is the fulness at the top and the "clinginess" at the bottom under certain poses that gives the effect.

The large picture is an evening gown on the new lines. The sumptuous séant-wrap is of brocade trimmed with fox. The train is a modification of the fish tail. The characteristic new large sash and bow are seen in the back view.

The sash and bow are to figure largely not only in the end season dresses, but in Spring and Summer gowns as well. In the little severely plain walking dress the sash falls over the hip and ends in a tassel. In the little evening gown for a quite young lady the sash is very marked. The trimmings of ermine fur give a distinctive touch to it.

The broad sashes are delightful, I think. One can do so many pretty, and dainty and striking things with them. I quite agree that there is a danger in the over-accentuating of any part of a dress, such as bow, a sash, and so on. But it is danger that gives us our most charming impressions, so long as we do not fall into any obvious trap.

Parasols are to be prettier than ever this year. One I have seen is a canopy of shimmering golden tissue, quaintly three-cornered in shape, and with a softening border of closely curled black ostrich feathers following all the curves of the upturned fold of tissue which finishes it off at the edge.

It is even more unexpected to find myriads of opalescent paillettes circling round the top of another sunshade in which net and lace provide a soft foil for all this ever-changing brilliance. But there is more in the way of real prettiness, as well as novelty, to recommend a creation of white silk, with full-blown deeply crimson roses, massed together, four deep, at the top, above three encircling frills of closely pleated black tulle, the space between their flimsy, deeply Vandyked points being filled in with closely overlapping and cleverly shaded rose petals.

A Dainty "Lucile" Evening Dress, with the "Super-Sash of Velvet and Ermine Fur.



On Left—Evening Gown of Brocade and Silk—"The Spinning Top"—Showing the New Sleeve Cuffs and New Train.
"Lucile" Model.

On Right—A Straight Line "Lucile" Walking Suit of Blue Duvetyn and Broad Green Sash, with Tassel.