

TIMELY REAL ESTATE GOSSIP

Barring War, a Farm Value Boom Could Be Predicted.

CROPS SEEM TO JUSTIFY IT

With an Extra \$57,000,000 of Products, This State's Agricultural Reputation Stands Well Up.

The extra \$57,000,000 worth of crops produced in Nebraska this year will surely produce an echo in the farm real estate market this fall and winter.

The question then is, How much influence will the European war have in the matter? True, there is no war in America.

Money for Farms. In the first place, to make real estate transactions takes capital.

Mantels Help Beautify. Fireplace and Accessories Do Much to Help Looks of House.

Color Scheme is Important. Should Match with General Plan of Room and Be so Constructed that it Will Not Smoke Up House.

Barbecue Feature. Hastings & Heyden have introduced a new feature into real estate activities.

Compliments for Hotel. Eastern traveling men and visitors from the east in general are complimenting Omaha highly on the appearance of the new Fontenelle hotel.

Real Estate Men Report Many Sales. Walter C. Harris purchased lot 15, block 4, Osborne & Hosick's addition.

DEVELOPER OF HIGH CLASS RESIDENTIAL PROPERTY.



Dean Glover

MANTELS HELP BEAUTIFY

Fireplace and Accessories Do Much to Help Looks of House.

COLOR SCHEME IS IMPORTANT

Should Match with General Plan of Room and Be so Constructed that it Will Not Smoke Up House.

By R. E. SUNDERLAND.

Fortunately for the home builder, the thought of accessories for the fireplace may be dismissed until the house is finished and ready to be occupied.

Personal references and individual taste must naturally govern to a considerable extent, but there are a few substantial considerations worthy of note.

For a gas fireplace it is only necessary to install a gas log and a suitable pair of andirons.

There is usually placed in the center of the back hearth floor an ash dump through which accumulations of ashes may drop to the basement.

A completely furnished hearth includes a portable basket grate, a pair of andirons, a spark screen, a fender or foot rail, a set of fire tools, including brush and a wood or coal holder.

Color Scheme Important. What is the color of the fireplace and the woodwork? Is it light or dark?

There are conditions under which brass hearth furniture must be used in order to harmonize with the surroundings.

Andirons are made in modern, colonial, Elizabethan, Louis XVI and many other "period" designs.

As to material and finish, fireplace accessories are available in bright or brushed brass, burnt antique brass.

It is evident that there is plenty of opportunity for the use of originality, taste and judgment in the selection of furnishings for the hearth.

Want Ads are the Best Business Boosters.

Here is a Chance to Save From \$85.00 to \$215.00 ON A HIGH GRADE PIANO



The above announcement brought so many customers to our store the past week that we have decided to continue the sale.

\$1 a Week Will Buy It

This sale offers genuine, substantial, price-saving chances to all shrewd and economical buyers.

Choose from the World's Best Makes--Pianos You All Know

Steinway Emerson Steger & Sons Weber Lindeman & Son Schmolter & Mueller Hardman McPhail Many other makes

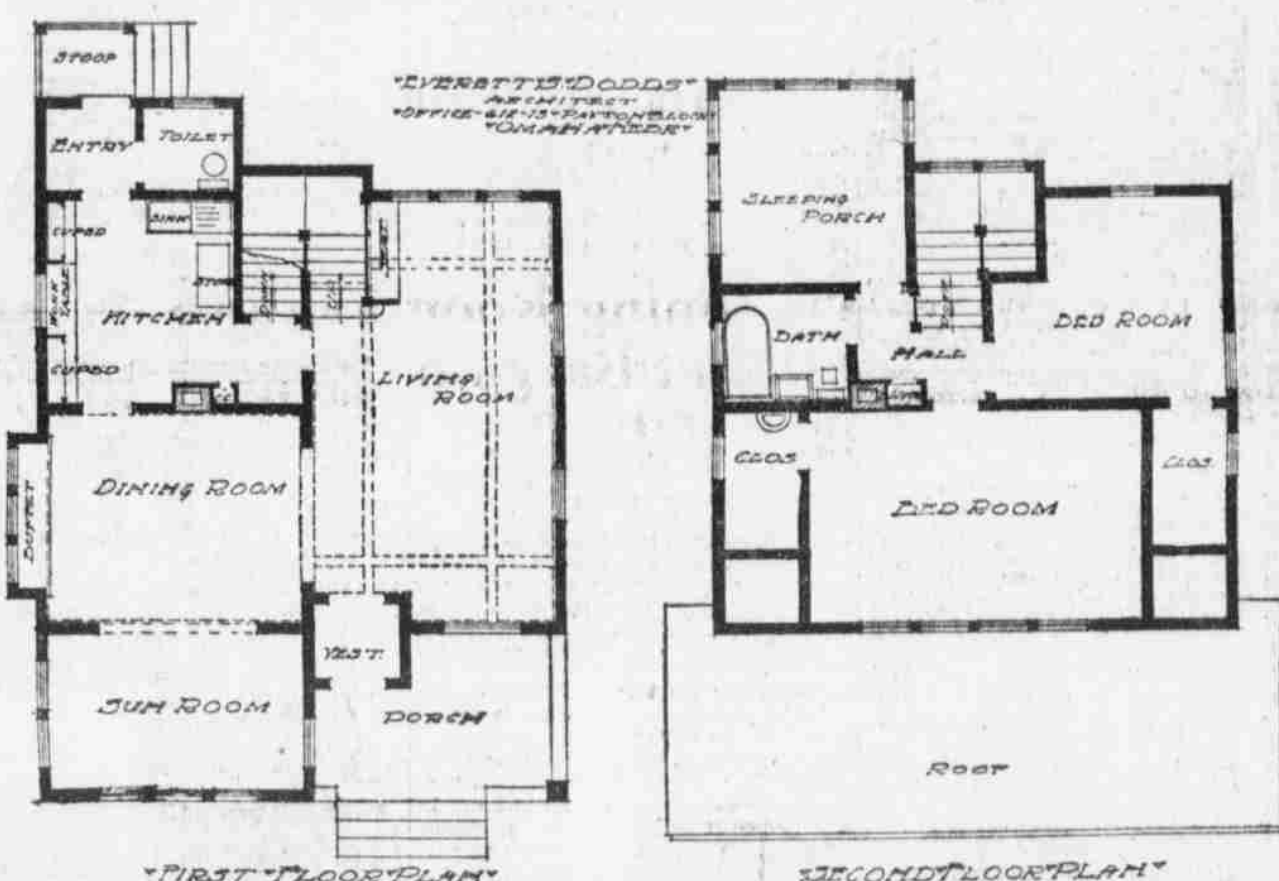
A SAMPLE OF THE WAY PIANOS ARE PRICED

Table listing piano models and prices, such as \$300 Vose & Son Upright, now \$150.

FREE STOOL AND SCARF WITH EVERY PIANO. Schmolter & Mueller Piano Co. 1311-13 FARNAM STREET, OMAHA, NEB. Estab. 1859.

Few Suggestions for the New Home

Attractive Home on "Prettiest Mile" Road



EVERETT S. DODDS ARCHITECT 1077 1/2 PAXTON BLOCK OMAHA, NEB.



This attractive plan will readily appeal to the prospective builder who is looking for a medium sized and conveniently arranged home.

Economists Meet Tuesday Evening

Beginning Tuesday the Economic League will resume its regular meetings on the first and third Tuesdays of each month.

Wonderful Cough Remedy. Mr. D. R. Lawson of Edison, Tenn., writes: "Dr. King's New Discovery is a most wonderful cough, cold and lung medicine."

BURBANK COMES TO MAKE HIS HOME HERE

W. R. Burbank of New York, manager of the new Fontenelle hotel now being built in Omaha, arrived in Omaha during the week to establish permanent headquarters.

Advertisement for Fidelity Storage & Van Co. featuring separate locked rooms, steam heated throughout, and contact information.

Advertisement for Luxus Beer, featuring the Luxus logo and text: 'THE BEER YOU LIKE STANDS PREEMINENTLY AMONG BOTTLED BEERS'.

LUXUS MERCANTILE CO. DISTRIBUTORS Phone Doug. 1889 and Have a Case Sent Home.

Advertisement for Barker Bros. Paint Co. with the headline 'Does Your House Look Shabby? Then Don't Beat It, But Paint It!'.

Advertisement for Omaha Van and Storage Co. featuring an image of a van and text: 'Let Us Move, Pack, Store or Ship Your Household Goods or Piano'.

Advertisement for E. J. Davis, Safe Mover, Heavy Hauling, 1212 Farnam, Phone Douglas 363.

Advertisement for Everett S. Dodds, Architect, Phone, D-2981, 612 Paxton Block.

Advertisement for The Bee Building, featuring the headline 'Customers will not hunt for you---' and text: 'Only when your location is right and easy of access, will they look you up.'

Advertisement for Hy-Tex Brick, 'The Quality Kind', Hydraulic Press Brick Company, 1302 W. O. W. Bldg.