

There are not more than ten real automobile manufacturers in America. Of these ten, Studebaker leads all the rest *in manufacturing the largest proportion of parts used in its cars.*

In laboratory research, in refining processes, in intensive manufacturing, in costly but economical equipment, Studebaker is first.

In addition, Studebaker spreads these quality producing factors over *the largest "Six" volume.*

The net result is the greatest automobile value in the world today—the

# Studebaker

ECONOMICAL  
LIGHT WEIGHT

# SIX

# \$1575

## Demonstration Will Sell This SIX Against Any Car Of Any Size Or Any Price

The Studebaker SIX will prove to you in half an hour its superiority over heavier, costlier cars.

It has a greater proportion of manufactured parts than the best of these heavier cars.

Each essential part is of special formula steel, heat-treated from two to four times to permit the use of light parts—with increased strength.

It will prove that this Studebaker combination of light weight and perfect balance holds the road far better than mere bulk. Once set in a straight line the Studebaker SIX continues in a straight line.

It does not creep or slide toward the ditch from the crown of a country road.

This roadability begins in the motor itself—one of the smoothest-running, most perfectly balanced "Six" motors in the world.

When the motor is developing its greatest power vibration is practically imperceptible.

At a speed of thirty or forty miles an hour you will probably guess that you are going twenty or twenty-five.

Your tire cost, gasoline cost, and oil cost, are of course very much lower than they would be in a heavier car—even a "Four" of equal power.

### Studebaker Demonstration Shows Even More striking Superiority Against The Assembled "SIX"

No assembled or semi-manufactured "Six" can stand up in demonstration against the Studebaker SIX.

Studebaker gives you special formula steels tested to 150,000 pounds per square inch.

The best steel the assembler can give you is the best he can get; tested by the mill—perhaps—to 100,000 pounds.

Studebaker doubles and trebles the strength of its own special formula steels by two to four heat treatments.

The assembler must pass the steel on to you exactly as he gets it.

Studebaker by this process produces parts two to three times as strong, and still holds down the weight.

To equal this strength the assembler would have to add weight which would be prohibitive.

So the factor of safety in the Studebaker SIX is bound to be immeasurably greater than in the best assembled "Six."

And the same elements work out in the Studebaker to produce perfect balance.

As a result of this balance it rides better, makes better use of its power, is a better hill-climber, is easier on tires.

In short, the value, long life and roadability of a "Six" are in proportion to the number of manufactured and closely measured parts.

In that respect, as we said above, The Studebaker SIX leads the world.

That is why it is competing with the costlier "Sixes" and out selling them.

That is why assembled "Sixes" MUST COME DOWN in price; and CANNOT COME UP to the Studebaker manufactured quality.

*Mammoth  
Studebaker  
Power  
Hammer  
Forging  
Studebaker  
SIX  
Crank Shaft*

The Studebaker FOUR is of the same grade and quality of material and workmanship, and is manufactured with the same scrupulous care and closeness, as the Studebaker SIX.

Studebaker branches and dealers have, in stock, \$1,000,000 worth of service-parts. This means service to owners of a sort that assemblers do not and cannot give. In this respect we believe the Studebaker organization to be unequalled. In addition to its \$3,000,000 machinery equipment for car manufacture, Studebaker maintains a special plant for the manufacture of service-parts, to keep all branch and dealer stocks complete at all times.

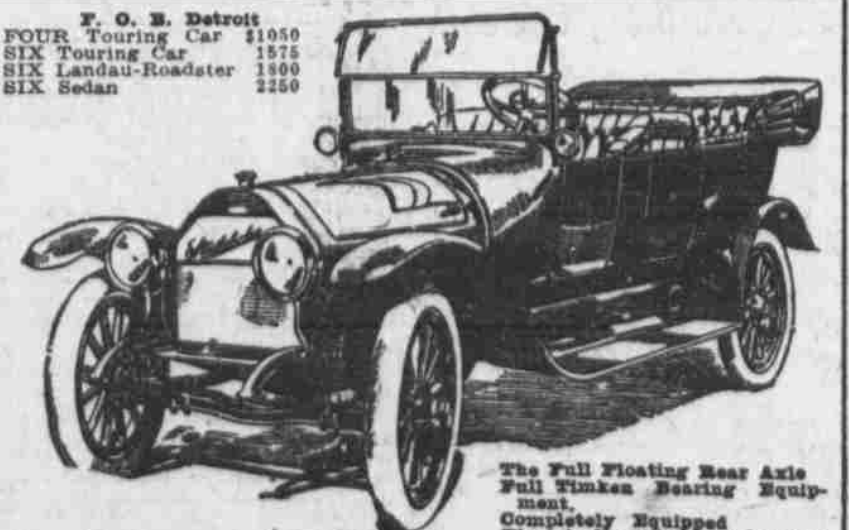
The Studebaker Proof Book describes and pictures the scientific manufacturing operations of Studebaker. Send for it

STUDEBAKER  
Detroit

Direct Factory Branch  
NEW STUDEBAKER BUILDING  
2552-4-6 Farnam St.

WILSON  
2429 Farnam Street  
Local Dealer

F. O. E. Detroit  
FOUR Touring Car \$1050  
SIX Touring Car 1575  
SIX Landau-Roadster 1800  
SIX Sedan 2250



The Full Floating Rear Axle  
Full Timken Bearing Equip-  
ment.  
Completely Equipped  
Electrically Started and Lighted  
Gasoline Tank in Cowl  
Finest Finish  
Elegant Design

## "Quantity Production of Quality Cars"