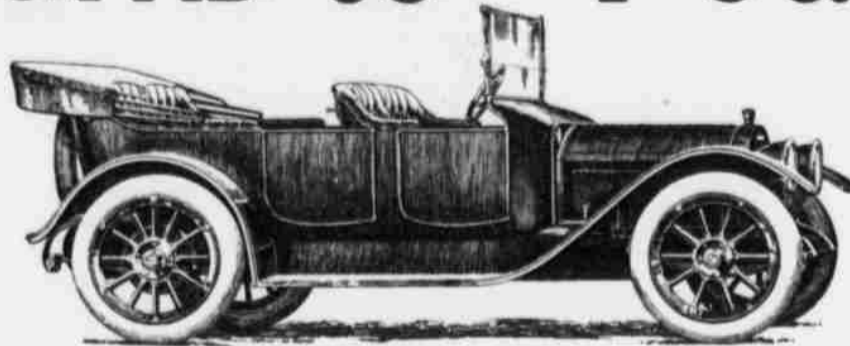


# Velie

## America Follows Europe Returns to "Fours"!



### This Velie Four Will Displace Any Six!

(at half the cost for maintenance)

Already the average owner is tired of the excessive fuel and tire cost of the heavy "Six," and Europe, the Dictator of Automobile practice, has come back to the economical "Four." ¶ There only the light "Six" survives—the new highly developed "Four" is supreme. ¶ In this country the type of car now supreme in Europe (the Velie 4-45) leads the way. Advance orders for this remarkable car are 300 per cent greater than last year—in the face of the tremendous shout for "Sixes" made by so many manufacturers.

#### We Build The (1000 Lbs. Lighter) "Velie Six"—Why!

Because the experience of Europe has taught us how to build a real Light "Six."  
A "Six" that weighs less carrying a load of six people than the average "Six" weighs empty.  
A certain small percentage of owners may always want a "Six."  
And this (1000 Lbs. Lighter) "Six" actually competes with "Fours" of the same size and power in economy of operation.  
But even our output of this remarkable car is greatly restricted.  
And what we build will be built practically on order for our dealers.

#### Velie Output of "Fours" to be Doubled—Trebled if Possible!

The Velie alone (with possibly one other high-grade American factory) has accepted the verdict of Europe and is confining its big output to "Fours."  
Additional factory buildings have so far enabled us to supply the new Velie 4-45 in sufficient quantity.  
But already Velie dealers are booking hundreds of orders from "Six" owners who in less than one season have discovered the useless expense of owning a heavy "Six."

#### Why "Sixes" Will Not Supersede "Fours"

Manufacturers went to "Sixes" to get a smoothness of running they could not get from "Fours" of the ordinary type.  
But today in Europe the highly perfected methods of balanced construction make the 4-cylinder car as flexible and smooth-running as the "Six."  
And 4-cylinder economy can never be obtained from a 6-cylinder car.  
So, practically, the only difference between the new Velie "Four" and the ordinary "Six" is in weight and tire and fuel expense.  
Ask any owner of a heavy "Six" what that difference is!

#### Lighter Than Other 4-Cylinder Cars of the Same Size and Power

Consequently much more power for speed or hill-climbing.  
Wonderful riding ease with same speed over rough country roads, comfort equal to that of any "Six."  
For the long, wide springs, oversize tires and balanced construction produce wonderful riding values.  
Conspicuously beautiful in design, upholstery, and excellence in finish—the Velie car is remarkable.  
Its complete equipment is practically the same as that in cars selling for \$2000 or \$3000 more.—The very best.

#### The Three Great Velie Models

**Model 10** (1000 pounds lighter) Velie Six. Cylinders cast in triplets, bore 3 1/4 inches, stroke 5 1/4 inches. Wheel base 126 inches. Tires 37x4 1/2 inches front and rear. Transmission, four speeds forward and one reverse. Selective sliding. Lubrication, constant level circulating system. Built as 5-passenger touring car, 4-passenger torpedo, 2-passenger roadster. Price **\$2,350**

**Model 9** The famous Velie "4-45." Cylinders cast in pairs, bore 4 1/2 inches, stroke 5 1/4 inches. Wheel base 121 inches. Tires 36x4 inches front and rear. Transmission, four speeds forward and one reverse. Selective sliding. Lubrication, constant level circulating system. Built as 5-passenger touring car, 4-passenger torpedo, 2-passenger roadster. Price **\$2,000**

**Model 5** "4-35." Cylinders cast en bloc, bore 4 inches, stroke 5 1/4 inches. Wheel base 113 inches. Tires 34x4 inches front and rear. Transmission, three speeds forward and one reverse. Lubrication, constant level circulating system. Built as a 5-passenger touring. Price **\$1,500**

#### This Remarkable Equipment Standard on All Velie Models

Gray & Davis Electric Starter.  
Gray & Davis Electric Lighting.  
Goodyear 10% Oversize, No-Rim-Cut Tires.  
Demountable Rims, with extra rim carried at the rear.  
Concealed Electric Horn.  
Bosch Magneto Dual Ignition.

Stromberg High-Efficiency Carburetor.  
Mohair Top and Ventilating Rain-vision Windshield.  
Left Steer with Center control.  
Extra Long Springs, 2 1/2 inches wide.  
Deep upholstery with best leather used throughout.  
Warner Speedometer.

#### EVERY Velie DEALER

is backed up by our great financial and manufacturing responsibility and his word is the voice of the Velie Motor Vehicle Company.

Mr. Charles R. Gardner, our Omaha, Neb., dealer, is the type of dealer with whom you will eventually do business.



CHARLES R. GARDNER  
John Deere Plow Co.  
OMAHA, NEB.

**JOHN DEERE PLOW CO.**  
Omaha, Neb.

We Have Dealers Everywhere—Get Our Demonstration From the Dealer Nearest You  
**VELIE MOTOR VEHICLE COMPANY, 10 Velie Place, Moline, Ill.**