

THE PEOPLE'S WEEKLY PAGE OF ELECTRICAL NEWS

Published Each Tuesday



FAMILY HAS MANY BRANCHES

Electric Fans Have Taken Various Forms This Year.

SIZE DESIGNED FOR KITCHEN

Large-Bladed Fans for Stores and Large Rooms Have Distinct Advantage Which is Easily Seen.

The man coming up the walk to the front door wondered whether the savage looking dog on the porch was growling at him or at the weather, but he kept on coming. A woman opened the door just a mile and then with an oh, threw it wide open and ran out to meet the article which the man carried. The man walked off and she carried the article into the house, started it to work and sat down to enjoy its pleasing little whirl. The dog came in, stood close by and stopped his growling. The electric fan had come.

It was one of those small eight-inch fans which are designed to be moved easily about from serving table to kitchen table and to make a good cool breeze wherever it goes. This small-sized fan has become very popular "at home" and is often nickel plated, which gives it a rich tone and adapts it to any room in the house.

The original electric fan which stood upon a table or desk and buzzed like a bumble bee has more cousins almost than could be expected in a family, the oldest member of which is only 27 years old.

There is the eight-inch fan which the woman bought. It weighs only four and a half pounds and is very convenient for household use. Then there is the larger twelve-inch residence fan, which is just a little heavier to move about, and the small "bracket fan" for the home, which fasten to the wall and blow as do all their kind.

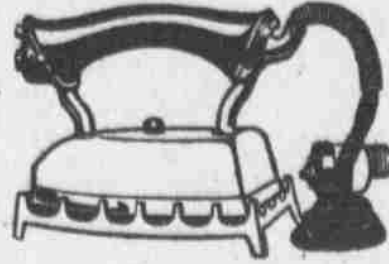
Offices have a little way of keeping cool by turning the switch on a twelve or sixteen-inch fan, which is somewhat heavier and made to make itself felt in larger rooms (and heavier atmospheres).

calling in stores, rest rooms and dining rooms and such places, and from this point of vantage have a very marked influence upon what would otherwise be a heavy atmosphere.

Another sort of a fan which has been seen in public places is the upright. It aspires to such lofty eminence as a hall tree or indoor lamp standard.

Here is Another New Wrinkle in Electric Irons

Electrical appliances have become so numerous and of such varied styles and workmanship that the housewife and others must take a choice of these things the same as they do of any old-fashioned pot, pan or iron.



Here is an electric iron which has the switch for controlling the heat placed at the end of the handle within easy reach of the fingers of the ironer. The heat of the iron is thus controlled in the easiest possible manner. The heat being thus controlled the cord is permanently attached to the iron.

Cranes Could Lift Two Locomotives of Very Great Weight

Electric cranes are keeping step in size and capacity with the other electrical aids to big industry. For the mounting of machinery and equipment on the Waterland, sister ship of the Imperator, there has been erected a huge electric crane having a capacity of 250 tons. The forward arm of the jib, which has a total length of 315 feet, can be raised to a height of 330 feet above the water.

Two independent lifting appliances, one a crab which can lift 250 tons at a radius of 115 feet, or 150 tons at 175 feet, and a revolving traveling crane capable of running the entire length of the top of the main jib, are used in conjunction with the main purchase. This auxiliary crane can lift ten tons at a distance of 260 feet from the turning center of the main crane, giving it an area of about 136,920 square feet. Only two men are employed to control the crane, which is driven entirely by electricity.



THE NEW RESTAURANT FAN.

Fans of the oscillating variety turn and coolly blow to each corner of the room in turn. They keep up this courtesy continually—that is as long as the power is supplied them.

Large-bladed fans are attached to the

UNCLE SAM'S NEW PLANS

Will Buy Very Best Electric Vehicle for Service.

REGIFICATIONS BY OWN MEN

Four Classes of Machines Have Been Adopted for the Different Kinds of Government Work.

Electric vehicles purchased by the United States government during the next fiscal year—July 1, 1913, to June 30, 1914—will have to comply with rigid specifications, including requirements covering the uniformity and standardization of parts. The government is a large user of electric vehicles, especially those of commercial types, and manufacturers hail with appreciation the new order.

Electrical experts in the United States bureau of standards and other departments will prepare the specifications and the purchase of vehicles will be under the authority and supervision of the general supply committee, which was recently created to establish system in buying goods for Uncle Sam.

Four classes of electric vehicles have been adopted for the different kinds of government service. These are an electric wagon of 1,000 pounds capacity, principally for the postal department, and trucks of 1,500 pounds, two tons and three tons' burden. As these are the types of electric cars that the manufacturers have made so successfully for private enterprises, they are glad to find that the government has given them its approval and practically specified them in preference to gasoline vehicles and horses and wagons.

Examination for Engineers.
The United States civil service commission announces a competitive examination for senior electrical engineers to fill vacancies on the staff of the Interstate Commerce commission. Salaries for these positions range from \$3,000 to \$4,000, and from \$1,800 to \$2,700, with expenses. Applicants should have a thorough technical training, with several years' practical experience in construction and operation of electrical properties, and should be "active, intelligent and discreet, and of good speech and manners." Applications must be filed before July 31.

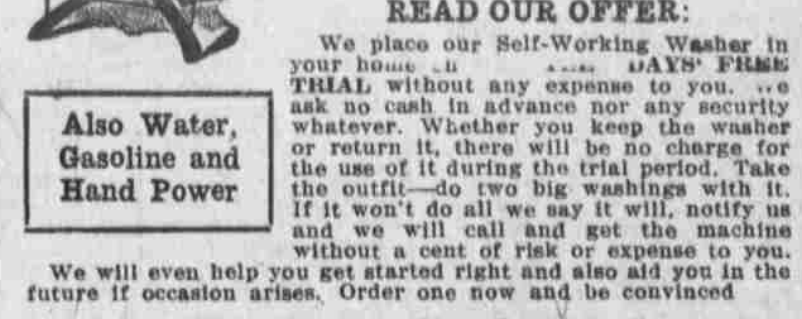
Government Bars Carbon Lamps.
Carbon-filament, gas or metalized carbon-filament lamps are forbidden to be used hereafter in buildings of the United States government. All such lamps installed before February 1 are to be removed and replaced by 35-watt Tungsten lamps. The supervising architect of the Treasury department recently issued an order to this effect. Inefficiency of any but Tungsten lamps is given as the reason for their substitution for carbon lamps.—Electric America.

New Range Has Glass Door.
The electric range with a glass door is a late innovation which many housewives are enjoying. It is quite a feature of convenience to be able to see how the contents of the oven are progressing without having to open the door to investigate.



The Best Known Washer in Omaha

When you are buying something that does not go out of style, it pays you to get the best. It means economy for you in the cost of operation, upkeep and length of service. That is why there are more than 1,200 USERS OF THE "1900" Electric Washer IN OMAHA



Also Water, Gasoline and Hand Power
We will even help you get started right and also aid you in the future if occasion arises. Order one now and be convinced.
(Either Cash or Easy Payments)
1900 Washer Company
Tyler 1011. 308 South 18th St. E. B. Williams, Mgr.



"YOUR HAND ON THE THROTTLE"

A Private Branch Exchange Keeps Your Business at Your Finger Tips

- HERE'S WHAT IT WILL DO:
1. Eliminate business-losing "busy" messages.
 2. Sort incoming calls.
 3. Give quick communication between departments.
 4. Make your supervision easy.
 5. Conserve the time and energy of your office force.
 6. Make every move count.

We have a private branch exchange adapt able to your line of business.

NEBRASKA TELEPHONE COMPANY



Why Not Enjoy Cool Breezes All Summer

Relief from summer's sweltering heat is obtained in no cheaper or surer way than by utilizing an Electric Fan. On the porch, in the dining room or in the sleeping room, the comfort gained is a rich return from the few cents a day that it costs to operate an electric fan.

Electric Lighting Rates Cut Again

On July first the rates for electric lighting were reduced from 14c to 12c per kilowatt hour for the first 30 hours' use. After the first 30 hours' use, the rate is 6c per kilowatt hour. Electric Light is cool, safe and convenient. Avoid the use of dangerous matches. Does not consume the life-giving oxygen and does not heat the room. Electricity in the home permits the use of many labor-saving devices that aid in making life really worth living. You should have your home wired now.

Write or Telephone Today.
Omaha Electric Light & Power Co.

EDISON REPLIES TO CHRONIC TALKER, WHO TOOK THE HINT

Thomas A. Edison, who is rather hard of hearing, said recently that on one of his rare visits to New York a man was introduced to him who proceeded at considerable length to make suggestions as to the direction in which, for the blessing of mankind, Mr. Edison's inventive facilities might be applied. Then the man switched to the question: "Mr. Edison, why don't you use an accentuator?"

"What's that?" asked Mr. Edison. "One of those things that help one to hear better." "Oh," said Mr. Edison, "I'll tell you. By a carefully conducted series of experiments I have discovered that the gray matter of the average person frizzes out before his voice does."

Far Weir in Niagara River.
WASHINGTON, D. C., July 22.—After more than ten years' investigation the International Waterways commission today, through the president, recommended to congress the construction of a submerged dam, or weir, in the Niagara river to raise the level of Lake Erie and its upper waters and result in extensive improvements to harbors and docks. The cost of the improvement is estimated at \$1,000,000. The commission recommended its location at Gill Creek on the American shore and Hog Island on the Canadian. Just above Welland river. The commission also report that the weir would eliminate any injurious effect up the Lake Erie level of diversion of waters at Niagara Falls for water power purposes and would reduce the range of oscillation of Lake Erie 54 per cent. Diversion of water to the Chicago drainage canal, to the Erie canal and for power plant purposes at Niagara Falls has considerably reduced the level of Lake Erie.

How to Rescue from Shock.
In dealing with persons suffering from electrical shock, if the victim remains in contact with the circuit his body must not be touched by the rescuer, but the latter may pull him out of contact by hauling on the clothing, or he may take off his own coat, insert his hand in the sleeve and then handle the victim with little or no risk. Almost any article of clothing or material may be used, provided it is dry and of moderate thickness. Dr. Morrison points out that death from electric shock is only an apparent death at first, and that there is practically always a time when it is possible to resuscitate the victim by artificial respiration.

Wireless on Philadelphia Church.
A wireless outfit has been installed in the Fifth Street Methodist temple of Philadelphia by the pastor. The antenna is mounted over the apex of the roof and consists of four wires, each sixty-five feet long and eighty-five feet above the level of the street.



"It must be great to be a fan."

The Girls at the Switchboard

Those young women whose voices you hear calling "Number?" are important personages in telephone affairs.

It is the patient, courteous "Central" girl who makes it possible to increase the joys of living, facilitates the activities of business and who summons help in cases of extremity.

A Human Element

It is the operator who applies intelligence to a machine that never stops—the Human Element that acts to control the wires as they summon aid in times of disaster, calls the doctor in illness or accident, or connects subscribers for a friendly, social chat.

Courtesy and consideration in dealing with these girls will make it easier for them to give better service to all.

NEBRASKA TELEPHONE COMPANY

BENNETT ELECTRIC CO
FOR SAFE AND RELIABLE WIRING
It PAYS TO PLEASE
201 Omaha West. Bank Bldg., 2nd Fl.

Omaha Electrical Works
Electric Elevator Repairs
and
Westinghouse Motors
100-12 N. 11th St. Phone Doug. 1161.

THE E. I. CO.

Wireless Outfits

And other specialties are now for sale here

THE ELECTRIC SHOP

1810 Farnam WOLFE ELECTRIC CO. Tyler 1414
Sole agent for the Edison Co.

New families are constantly coming to Omaha who want rooms....

If you have any rooms apartments or houses to rent, you should let these newcomers know—and the way to tell them is through the Bee classified pages. People who come into Omaha always read the Bee first. It has a national reputation and everybody looks to it for information. Better put your "for rent" ads in The Bee right now.

PHONE
Tyler 1000