

# Modern Home-Builders and Home-Furnishers of Omaha

## Only 8 Days are Left

in which you can purchase HOME BUILDERS PREFERRED SHARES at the present price—\$1.65 per share.

ON JULY 1st the price of shares will be advanced in accordance with the actual cash value as shown on our books, which are subject to your inspection.

Invest in these shares NOW and gain this extra profit in addition to the

**GUARANTEED 7%**

Remember You Have Only 8 Days in Which to Act. Let Us Show You

some of the attractive bungalows and dwellings just being completed which we are building to order for the owners. We know that you will pronounce them honest, well-built houses which any person would be proud to call his home. Our endeavor is to build, not the cheapest, but the best homes that can be built for the money.

### The New Way

Our booklet, "The New Way," explains fully Home Builders' plan and how to secure a home on easy monthly payments, built to suit you on any lot you select. It is free for the asking.

## HOME BUILDERS (Inc.)

American Security Company, Fidelity Agents.  
Brandeis Theater Bldg., Ground Floor, S. W. Cor. 17th and Douglas Sts.  
Douglas 3015.

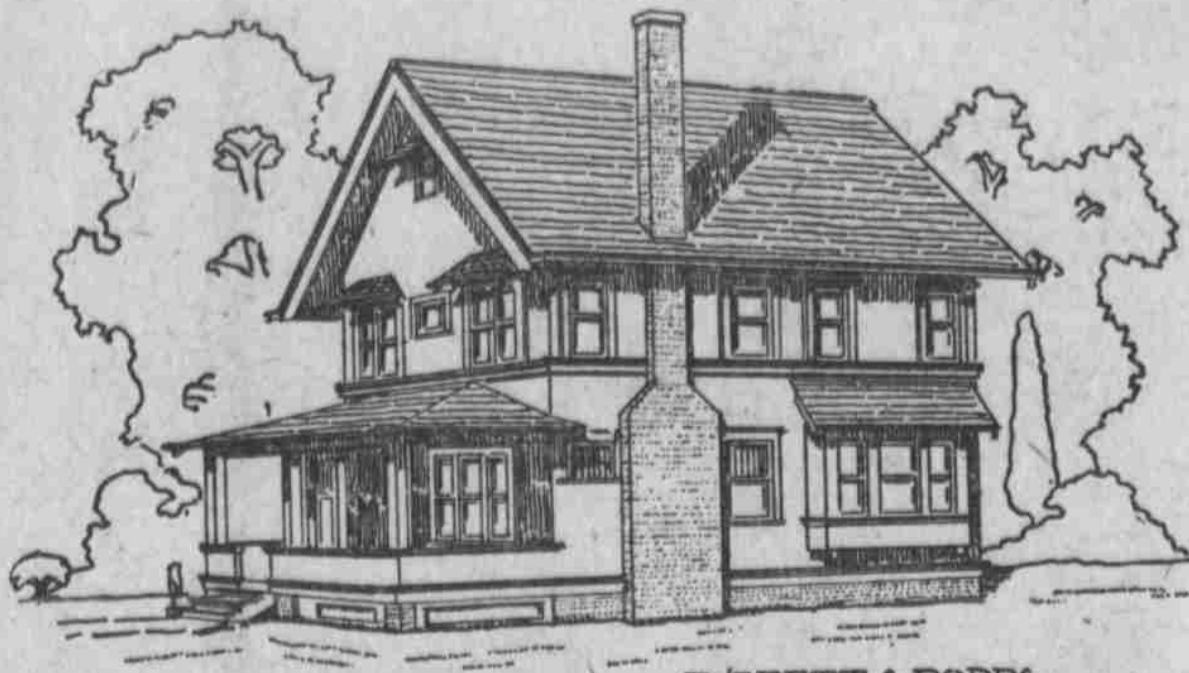
### BUILDING LOANS

Money to loan to build houses, to improve business property or to pay existing loans. Borrowers may pay from 10 to 25 per cent on loans on interest dates. Interest covers six months when paid. Loans closed promptly. Your business solicited.

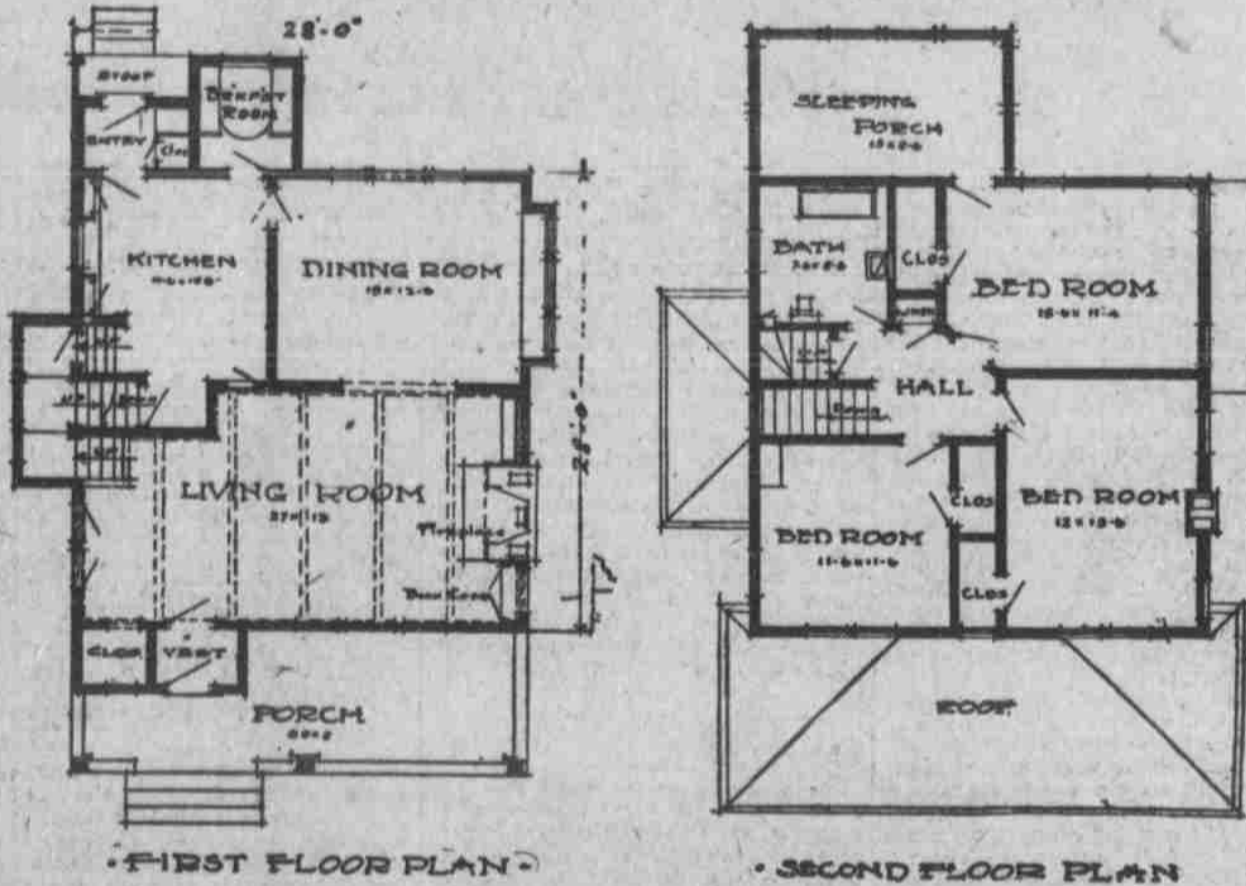
## W. H. THOMAS & SON

Douglas 1648. 228 State Bank Bldg.

### Home Builders' Model Home



EVERETT S. DODDS, ARCHITECT



The house illustrated above is one of the most popular houses being built at the present time. It is so popular because it has all of the modern conveniences combined with an economical arrangement that can be found in the medium priced home. The house on the ground is 28x28, with an addition in the rear for entry and breakfast room. It has a large porch across the front and a vestibule entering into the living room, which is 27x12. In the living room is the massive fireplace with book cases on each side and a heavy wood mouth shelf. At the other end of the room the open stairway leads to the second floor. The living and dining rooms are separated by a large casement opening. In the dining room the walls are paneled six feet high with stripes and a neat plate

rail runs around the room at the top of the panelwork. In the end of the dining room is a built in seat with a lid that raises up, giving a place to store different articles that are bound to accumulate in every home. From the dining room one passes directly into the kitchen, which is as complete as a kitchen can be with its built in cupboards and work table, its disappearing ironing board and broom closet built in the wall. In the entry there is space for ice box and closet for storage purposes. The entry leads to the small porch at the rear of the house. Opening off the kitchen is the breakfast room, which is as compact as a room used for this purpose can be. The table is hinged at the window sill and may be folded up out of the way, but the seats

on each side are permanent fixtures and are built in such a way as not to interfere in any way with one when he sits down to the table. On the second floor are three large bedrooms, a sleeping porch and a bath room. Each bedroom has a large closet and a linen closet is provided for off the hall. In the bath room, over the lavatory is the medicine cabinet built in the wall and a cloth chute which leads to the laundry in the basement. This plan is from the office of Everett S. Dodds, architect, 22nd floor Brandeis Theater Building, Omaha, Neb. Any one desiring information relative to the cost of this house, price of plans, or the designing of a new home, modern and up-to-the-minute, may write, phone or call on the architect, who will be glad to render his services.

**WOLF BROS. TENT & AWNING CO.**  
PHONE DOUGLAS 304. 1313 HOWARD ST.

### HANDSOME AWNINGS

We have a great variety of Awning patterns to select from, materials all durable. Telephone us and we will send a representative right out to you with samples.

Porch Curtains, too, and Couch Hammocks. See our Couch Hammocks before you buy, \$7.50 to \$15.00.

## Gate City Tent & Awning Co.

314-16 So. 12th St. Tel. Douglas 6745.

## Peters Trust Company

Established 1886.

Organized for the performance of Fiduciary Work under the Statutes of the State of Nebraska. This trust company is organized to act in the following fiduciary capacities:

- As Administrator of Estates or as Executor or Trustee under Wills.
- As Trustee under Agreements in writing, including trust deeds securing the issuance of corporate bonds.
- As Guardian of Estates of Minors or incompetent Persons.
- As Trustee under Life Insurance Policies.
- As Custodian of Securities, with or without control and investment.
- As Treasurer or as Agent for the Treasurer of Charitable and other Similar Associations.
- As Manager of Estates during the temporary or permanent absence of the owners; or for persons who are unable for any reason to give personal attention to their property, collecting income, interest, dividends, coupons, bonds, mortgages, keeping the funds invested, paying taxes, etc.
- As Registrar and Transfer Agent for Corporation Stocks and Bonds.

Is known all over the West for its Character, Strength, Responsibility and Efficiency.

CAPITAL	<b>PETERS TRUST CO.</b>	SURPLUS
\$200,000.00	1622 FARNAM STREET OMAHA, NEBRASKA.	\$200,000.00

**FIDELITY STORAGE & VAN CO.**  
16TH AND JACKSON STREETS.

Let The Fidelity Storage and Van Company Store Your Household Goods

Most centrally located Storage Warehouse in the city—lowest insurance rates—well lighted and ventilated storage rooms—separate locked rooms for those who want them. Large vans and regulation wagons for moving—only competent and experienced workmen—guaranteed service—moderate rates.

For full information, telephone—Douglas 1516.

### In the Evening

you should make yourself just as comfortable as you can because the more rest and enjoyment you get the better you will feel for next day's duties. One of our

## Couch Hammocks

will afford you luxurious ease in your porch rest. From \$6.50 up to \$12. Drop in and see them.

For samples of Awning and Porch Curtain Materials just telephone—Douglas 338 or 882—and a man will call.

## Scott-Rawitzer Mfg. Co.

11th and HARNEY  
Successors to Scott Tent & Awning Co.  
Omaha Tent & Awning Co.

## The house wired for electricity is the one that gives the tenant entire satisfaction

If your house does not have electricity let us move you at once into one that does. We give complete satisfaction in our moving, and dispatch work with care to every article and without damage to the most fragile piece of furniture.

Moving, Storing and Packing  
Modern Equipment

Store your goods with us this summer in  
Fireproof, Ratproof and Dirtproof Vaults

The Best Storage in the West.

## Omaha Van & Storage Company

### Trust Companies Hit Fakes

The postmaster general of the United States, in his last official report, states that "wildcat" securities and "fake" investments to the extent of \$130,000,000 were sold through the mails during the last year. Newspapers recently gave accounts of a number of spectacular raids made by postal inspectors on the offices of promoters and professional swindlers who were using the mails to induce people to purchase spurious stocks or investments. In some cases these promoters maintained an elaborate system of private wires and had elegant offices in many cities. The "securities" they offered consisted largely of pseudo shares in industrial, mining and land promotion enterprises. Despite the numerous statutory safeguards which have been enacted for the protection of investors and control of corporations, or enterprises offering stocks or bonds for sale, there are many subterfuges which the unscrupulous professional promoter utilizes to swindle innocent women and men. The question, then, follows, naturally, as to what is the most important agency in discouraging improper investment and promotion schemes. Answer—"the trust company."

Further consideration of the growth and work of trust companies in the United States reveals the fact that they have exercised the greatest influence in limiting the field of operations of the professional promoter. "Fake" promoters have been taught by experience that they cannot enlist the co-operation of trust companies or secure their services as trustees, depositories, registrar, transfer agent or in any capacity. If one of these promoters goes into the office of a reputable trust company and lays his plans before the executive or trust officer he soon finds out that his scheme will have to undergo an acid test and he kills himself away.

Trust companies now generally maintain investment departments, through which they offer invaluable services to their clients and the general public. These departments are primarily maintained in connection with investments in connection with handling trust funds, and for the purchase or sale of securities for the trust company's own account. But frequently such departments handle original security and bond issues. The manager of this department is a man especially skilled to judge investments.

### TIMELY REAL ESTATE GOSSIP

#### Peony Farm is the Mecca for Property Buyers on West Dodge.

#### WILL OPEN NEW ADDITION

Another Restricted Subdivision in Happy Hollow is Being Prepared for the Market by George A. Company.

The twenty-five acres bounded by Dodge on the south, Chicago on the north, Fifty-second street on the east and the Happy Hollow boulevard on the west, is now being graded and in about ninety days will be subdivided into six blocks with winding roadways and irregular shape lots, the lots having street frontage ranging from sixty to 125 feet. These six blocks will be added to, and will be called Happy Hollow.

The first three blocks of the Happy Hollow subdivision, directly east of the Happy Hollow club were platted and placed on the market about three years ago and already fifteen attractive houses have been built on these blocks.

All lots, blocks and streets in the new subdivision will be brought to established permanent grades before the property is platted, and all street improvements will be in, including sewers, sidewalks, curbs, gutters and paving. It is said that when finished this will be the most beautiful strictly high-class addition to Omaha. Building restrictions will require houses, when built, to cost not less than \$1,500.

They must be of brick, brick veneer, stone or combination thereof. No one-story bungalow and no frame houses will be permitted. These six blocks overlook Elmwood park and the Happy Hollow golf course and have about one-third of a mile frontage on the new Happy Hollow boulevard.

About \$1,000,000 was expended in the Happy Hollow-Dundee district during the years 1911 and 1912 on public improvements and new houses, included in which improvement was the laying of eight and one-half miles of asphalt paved streets and the construction of about 120 new houses to be built in this district during 1913. The park department, assisted by contributions from property owners in the vicinity, opened up last year one of the best pieces of boulevard work that has ever been given to the public here. This boulevard is about one and a quarter miles in length and extends from Leavenworth street on the south, skirting along the east line of Elmwood park up through Happy Hollow and Dundee to Hamilton street, and three blocks of the boulevard, between Underwood avenue and Cuming street have been converted into a sunken garden, which will be one of the beauty spots of Omaha in the future.

Peony Farm Lures.

To get persons interested in property on the West Dodge road and adjacent parallel streets, real estate agents have found that the peony farm is one of their best lures. When that twenty-five-acre tract is in bloom thousands of Omahans and visitors take automobile and buggy trips to view it, with the result that property along the way attracts them.

The peony farm is just five and one-half miles west of Sixteenth street. The full twenty-five acres of peonies have been in bloom during the last two weeks, and as many as fifty automobiles stop there in an evening to get armloads of the beautiful flowers.

The place is owned by J. F. Rosenfeld, who came here three years ago from West Point, where he was in the same business for many years. The place was an ordinary unattractive pasture field when he took it and now is one of the largest flower gardens in the country. It is enclosed by a rose and shrub fence, which will add still more to the beauty of the place in a year or so.

With the Real Estate Men.

Miss Lovena Leeks of Thurman, Ia., has bought the home of Dr. J. C. Boutkup, 3201 Florence boulevard, on the "Prettiest Mile." It was built by Charles Martin & Co. She paid \$2,000 for the place and will occupy it as her home. There are two acres of ground with the house, which is designed after an English country home and finished in white stucco.

Business is very lively on the north side, especially along the "Prettiest Mile" and in Laurelton, which was put on the market six weeks ago. The new addition is now about half sold, Martin reports.

The following persons have bought lots there: Merrill E. Garrison, \$75; Ida A. Finn, \$50; W. L. Fulton, \$75; Maurice Garrison, \$1,000; William Nevott, \$50; E. L. Michael, \$75; H. P. Dany, \$75; A. B. Palmer, \$75; W. A. Haberstroh, \$100; F. A. Miller, \$75; O. P. Applegate, \$50; Glen P. Pratt, \$50; F. L. Gallup, \$75.

Newspaper Advertising is the Road to Business Success.

YOUR Face Brick Problem Can Be Solved With . . . **HY-TEX BRICK** . . . Ask For Our . . . Booklets . . . 1302-3

## Hydraulic Press Brick Co. W. O. W. BLDG.

### Summer Time is Paint Time

**Sherwin-Williams Paints**  
THE PAINT THAT LASTS.  
We have sold it for 15 years. Been on the market for 50 years.

1/2 pint Family Paint	15c
1-gallon can Outside Paint	\$2.00
1 pint good Varnish	35c
1 quart Inside Floor Paint	50c
1 quart Mar-Not Varnish	90c
Smoky City Wall Paper Cleaner	10c

**Sherman & McConnell Drug Co.**  
OMAHA'S FOUR GOOD DRUG STORES.

**NEBRASKA TENT & AWNING COMPANY**  
Phone Douglas 3841. 1701 Leavenworth.

Henry S. McDonald

Awnings  
Porch  
Curtains  
Anti-Trust

Note Trappagan

Auto Covers  
Camp  
Furniture  
Living  
Prices

We are at your service. Why not have us give you prices on your needs? It places you under no obligation to buy. Phone for our salesman to call.

### BEAUTIFY YOUR HOME

Vases and Flower Boxes of Cement. Do not crack or crumble. We have a variety of designs, colors and sizes.

Visit Our Display Rooms, 1708 Cuming St.

## IDEAL CEMENT STONE CO.

Phone Douglas 4422.

Frank Barker, Al. O. Barker, George Barker, Jr., Joseph Barker, Ed

## Barker Brothers Paint Co.

WHOLESALE AND RETAIL

### Sherwin-Williams Paints and Varnishes

PRATT & LAMBERT VARNISHES, KEYSTONA, BRUSHES AND GLASS

1609 1/2 Farnam St. Tel. Douglas 4750.