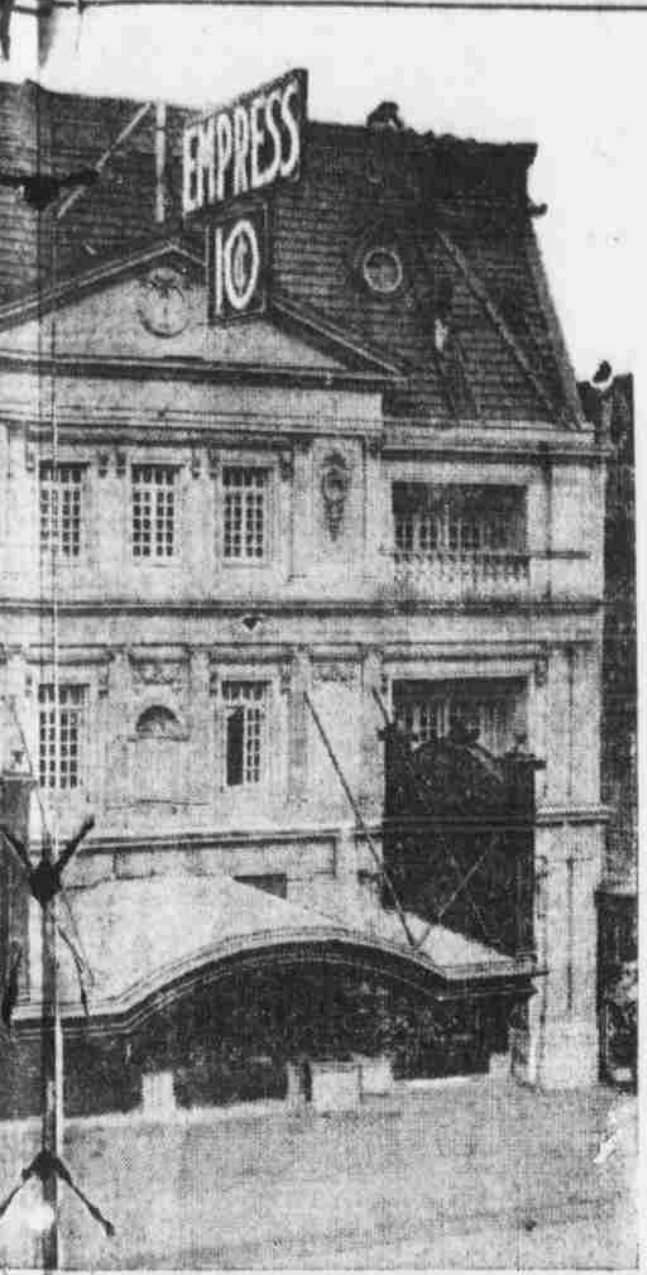


Empress



Queen of Playhouses



VAUDEVILLE THEATRE



**J. J. Hanighen
Company**

**Plumbing
and Heating
for the Empress**

617-23 South 14th Street

*Make
Yourself at
Home*

**Architectural
Decorating
for the
Empress**



**Kansas City
Architectural
Decorating
Co.**



**Ornamental
Plastering
Models for
Stone and
Scale Models**



1114 East 18th
Street.
Kansas City, Mo.

**THE
REES PRINTING CO.**

10th and HARNEY STREETS

Nebraska's Most Complete Printing Establishment
Highest Grade of Commercial Printing
Artistic Lithographing
Loose Leaf Ledgers and Devices
Blank Books of All Descriptions

POSTERS TICKETS

Show Printing of
All Kinds

The Best Made

THE REES PRINTING COMPANY

10th and Harney Streets

Regarding the Empress

THE DECORATIONS. Beautiful stairways, small balconies, flowering plants, tapestry paintings and lighting effects combine and harmonize to give the interior a beauty that will appeal to all.

THE SHOW—Excellent Vaudeville Nothing but the cleanest of acts will be presented. They will be of high quality and please the most fastidious. We guarantee the moral tone of our entertainment and cater especially to ladies and children. The best of picture dramas and comedies will be produced and the exclamation, "Oh, I seen that before;" will be unknown, as all photo plays shown will be absolutely new, i. e. direct from the studio. We have installed an especially made concave screen, the only one of its kind in the city of Omaha, and producing a picture which is absolutely devoid of distortions.

AS TO MUSIC We have engaged a first class orchestra which will play high grade music and furnish a backing for the pictures as well as the vaudeville. The orchestra has been augmented by a Cathedral organ, which will also be used during the intervals that the orchestra is not playing.

THE POLICY The policy of the management will be at all times to furnish an entertainment that is popular with the people and yet strictly of the higher class. For the benefit of those that only have an odd hour or so to spend, the show will be made continuous from noon until 11 at night. On Saturdays, Sundays and holidays there will be four complete vaudeville performances, two in the afternoon and two at night. On week days there will be two complete performances at night and one in the afternoon, in conjunction at all times with the best of photo plays.

A LAST WORD As a fitting close for these remarks we invite you all to see our opening week's program, feeling that it will be a splendid opportunity for you to judge what you may expect in the future. We open tomorrow at noon.

YOURSELF AT HOME."

The current for the
brilliantly illuminated
Empress will be fur-
nished from the mains

of the

**Omaha Electric Light
and Power Co.**

ELECTRIC

and commercial

-: SIGNS :-

OF QUALITY

**Thos. Cusack
Company**

Out Door Advertising

20th and Harney Sts.