

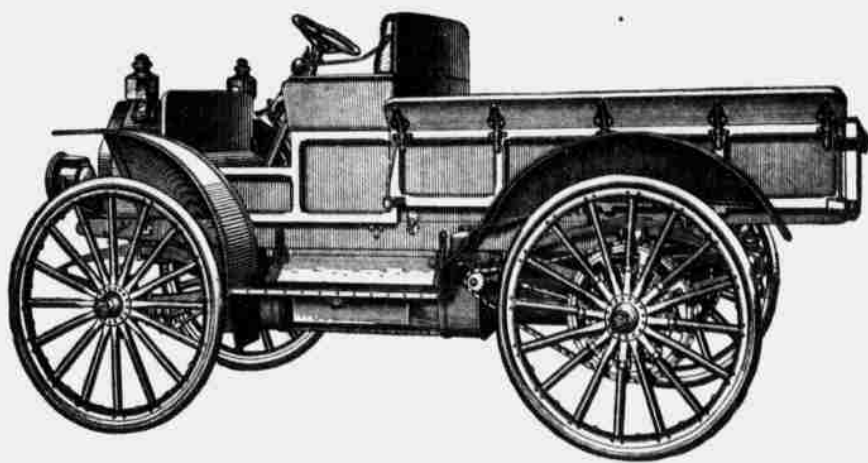
Weekdays--Business Sundays--Pleasure

AN International Auto Wagon is a useful money-making motor car. You can use it for all kinds of light hauling and for making business trips and store deliveries six days in the week. You can add an extra seat and a top and make it a comfortable car in which you and your family can drive to church on Sunday or visit any friend living within twenty-five or thirty miles, or even further.

The auto wagon has two great advantages over the horse—it travels much faster—it never gets tired. In any emergency the International auto wagon is always ready to go, day or night, storm or shine. Fill the gasoline tank, and oiler, turn the crank, and you are on your way.

International Auto Wagons

are sturdy, dependable, willing servants. You will find the International easy to understand and manage, reliable in every way. The motor is simple and powerful.



Speed changes are made easily and surely. Springs are resilient and easy riding. Wheels are high enough to give ample road clearance. Brakes are powerful. You control the car completely through a single convenient lever. Winter or summer you can go comfortably and safely in your International auto wagon, over any road where horses could travel, at less expense for fuel and oil than the feed for one horse would amount to.

You should know all about the International auto wagon and what it will do for you. Write for catalogue giving many interesting facts and figures.

International Harvester Company of America

(Incorporated)

OMAHA

NEBRASKA

An I H C Engine Will Pay You Best

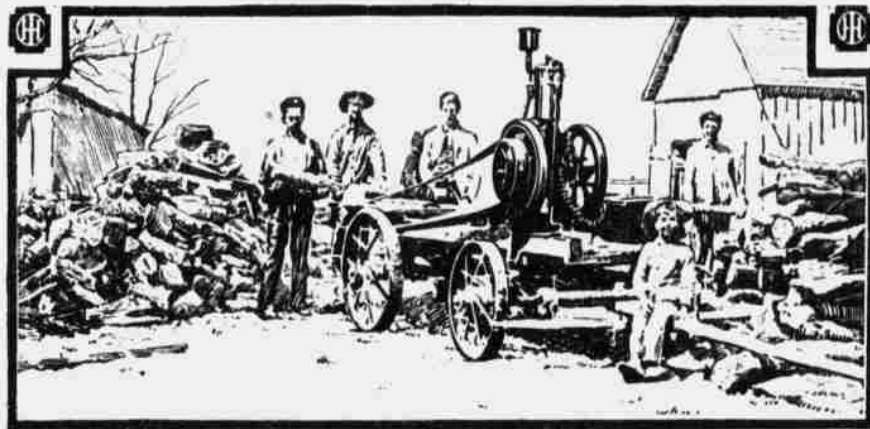
IF you really want your money's worth when you buy an engine, buy an I H C with plenty of power to do your work.

A gas engine that is not well designed, that is built roughly or of inferior material, is worse than none at all. It costs almost as much as a good engine to begin with, and costs much more afterward in repairs and loss of time.

Buy a reliable I C H engine and save an endless amount of worry, lost time, money, and temper.

I H C Oil and Gas Engines

are simple, dependable, durable. The carburetor or gasoline mixer is the simplest and most effective known. Anyone can regulate it perfectly. Ignition is positive. The ignition apparatus is so simple you can understand it at a glance. The fine-grained, grey cast iron cylinders and



pistons are worked together to a perfect fit. The ground piston rings insure maximum power for the explosion.

All moving parts are perfectly balanced. The bearings are unusually large and carefully fitted. Every part is amply strong and no part is too heavy to be most efficient. In every detail, the I H C is a good engine—one you can depend upon for years to do your work when you want it done.

I C H engines furnish power for pumping, sawing, spraying, grinding, running the cream separator, churn, washing machine and other farm machines and for general purposes in mill, shop and factory.

I C H engines are made in all styles—vertical and horizontal portable and stationary, air and water-cooled; in sizes from 1 to 50 horse power, to operate on gas, gasoline, naphtha, distillate, kerosene or alcohol. Gasoline and kerosene tractors, 12 to 45-H. P. Grinding, sawing, pumping, and spraying outfits, etc.

The I H C local dealer will show you the good points of the I H C engine. Get catalogue from him, or, write

International Harvester Company of America

(Incorporated)

Omaha,

Nebraska

