



Photo by Klinehart  
W. J. Hynes, Vice President

start, an active and open market. There has been a buying interest here from the beginning that has taken every bushel of grain offered, naturally attracted further business. The weighing and inspection of grain at Omaha has been gradually improved, until today the character and standing of the Omaha Grain Exchange certificates of weight and inspection are not questioned in any market in the United States.

It is pleasant to reflect that this growth and development has been based practically upon Nebraska and Iowa grain only, although during the last year transportation charges from southern South Dakota points have been so readjusted that the Omaha dealers are now receiving a large volume of grain from this territory.

What, then, may we not look forward to by way of development in this young giant among grain mar-

kets, situated as it is in the center of the greatest surplus grain producing area in the world and with outlets in every direction to the great consuming markets?

The place we have set for ourselves as a grain market is that of second only to the greatest primary market in the world, Chicago, and we feel every confidence that that position will be attained.

A word about the milling interests: It was not supposed by the people who organized the Omaha exchange that the receipts of wheat at Omaha would increase as rapidly as those of other kinds of grain, but the increase year after year of these receipts necessarily came to the attention of the flour millers and, as a result, two splendid mills are now in operation in Omaha, the Updike mill and the Maney mill.

While grain receipts at Omaha varied very little in total during the last few years, it is significant that during the first few years very little of these receipts were actually marketed here. Each year has seen a substantial increase in the number of bushels which change hands in the Omaha Grain Exchange. Today

Directors, 1912—For one year, C. E. Niswonger, E. P. Peck; for two years, W. J. Hynes, J. W. Holmquist, S. Saunders; for three years, J. A. Cavers, F. H. Brown, T. F. Blake.

Standing committees, 1912:

Alleged Violation of Rules—E. C. Twamley, chairman; C. C. Crowell, jr.; Rudolph Beal, E. S. Westbrook.

Appeals—E. S. Westbrook, chairman; C. C. Crowell, jr.; W. C. Sunderland, J. F. Westrand, S. S. Carlisle.

Arbitration—J. B. Swearingen, chairman; J. H. Conrad, J. T. Buchanan, H. L. Olsen, T. A. Anderson.

Discounts—S. S. Carlisle, chairman; A. H. Bewsher, James Swanick.

Elevator and Elevator Register—S. P. Mason, J. H. Wright, jr.

Finance—S. Saunders, chairman; L. Drake, W. H. Bucholz.

Grain—E. C. Twamley, chairman; E. S. Westbrook, James Swanick, S. P. Mason, J. H. Wright, jr.

Membership—J. F. Westrand, chairman; W. B. Weekes, A. McKinley, C. Vincent, Barton Millard.

Quotation—O. E. Harris, chairman; C. H. Wright, J. A. Linderholm, W. J. Buttschau.



Photo by Klinehart  
F. P. Manchester, Secretary

McCaul-Dinsmore company.  
Nebraska-Iowa Grain company.  
Nordstrom-Richter Grain Co.  
Nye-Schneider-Fowler Grain Co.  
Omaha Elevator Co.

M. C. Peters Mill Co.  
Rainbolt Corn Co.  
George A. Roberts  
Grain Co.

Saunders-Westrand Co.  
Saunders-Westrand Elevator Co.

Standard Grain Co.  
Stidham Grain Co.  
Sunderland & Saunders.

Taylor Grain Co.  
E. R. Thresher.  
Transmississippi Grain Company.

J. F. Twamley, Son & Co.

Union Grain and Elevator Co.

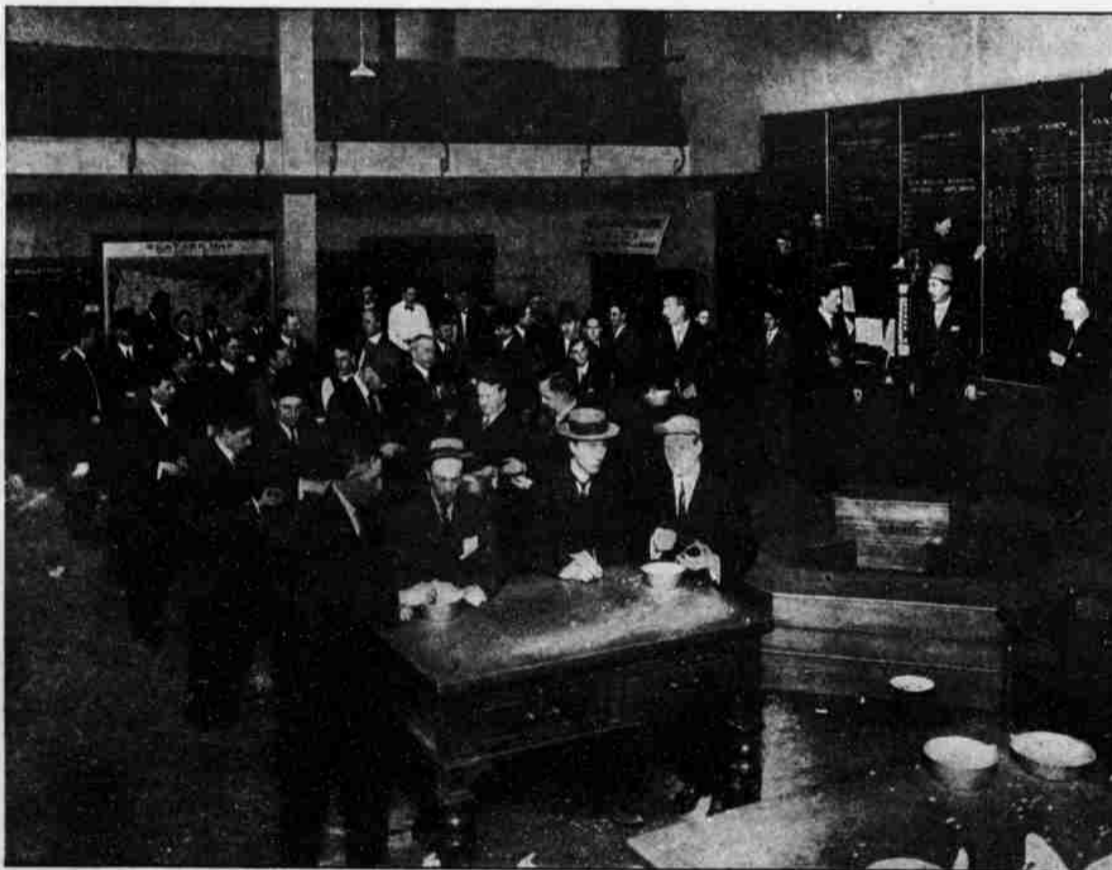
The United Grain company.

Updike Elevator company.

Updike Grain Co.  
Updike Milling Co.

Van Wickle Grain and Lumber Co.

Ware & Leland.  
Weekes Grain Co.  
Welsh Grain Co.



Trading Floor of the Omaha Grain Exchange

it is safe to say that fully 80 per cent or more of the total receipts of grain are put on the open market on this floor. The two largest and most thoroughly modern alfalfa mills in the United States are situated in Omaha—the M. C. Peters Mill company and the Omaha Milling company. The success of these enterprises has been marked from the start and there is no question that the milling capacity of Omaha will grow as rapidly, relatively, as its elevator capacity has grown and as its receipts of grain have grown.

The men who, as officers, directors and members of committees, so ably direct the affairs of this great institution are as follows:

President, E. P. Peck; vice presidents, J. W. Holmquist, W. J. Hynes; treasurer, S. Saunders; secretary, F. P. Manchester; chief inspector and weighmaster, George B. Powell; assistant chief inspector, A. F. Kruse.

Transportation—C. D. Sturtevant, chairman; F. S. Cowgill, J. W. Holmquist, C. E. Niswonger.

The active grain firms of the exchange are:

Beal-Vincent Grain company.  
The Bewsher company.  
The Frank H Brown company.  
Cavers Elevator company.  
Crowell Elevator company.  
Crowell Lumber and Grain company.

J. H. Conrad.  
F. G. Endelman.  
Gate City Malt company.  
J. F. Gloe Grain company.  
Holmquist Elevator company.  
E. E. Huntley.  
Hynes Grain company.  
Imperial Milling company.  
Lamson Bros. & Co.  
Logan & Bryan.  
Maney Milling company.  
Merriam Commission company.  
Merriam & Millard company.



Photo by Klinehart  
Sherman Saunders, Treasurer



Photo by Klinehart  
C. E. Niswonger, Director