

## Officers of Alpha Camp, Woodmen of the World



BACK ROW—ALBERT SINCLAIR, HARRY ELLSBERY, MICHAEL KIESER, ALBERT WINTERS, GEORGE MEC K—FRONT ROW—N. J. WEILER, L. W. DAWSON, A. J. BRUGERMAN, CHAS. UNITT.

### THOUSANDS HELP DEDICATE

Woodmen Come from All Parts of the Country for Exercises.

### MANY TEAMS WEAR UNIFORMS

Visitors Call at the Old Woodmen Building and Inspect the New—Many Go to the Top of the Building.

Charles Unitt, clerk of Alpha camp, Woodmen of the World, and one of the prime movers in the dedication services, was kept busy all yesterday handing out badges to the large number of members of the order who are in the city. Mr. Unitt estimated that he gave out over 5,000 badges.

Very little business was transacted at the old building, owing to the large number of visitors who passed through the rooms and visited with the clerks. Representatives of the order from almost every state in the union are here for the big parade and dedication. A rough estimate of the number of Woodmen in town is placed at about 5,000. Of this number over 3,000 are visitors to the city.

Woodmen visitors had a hard time trying to secure rooms for the remainder of the week. All the hotels are crowded and hundreds are being turned away. The executive council of the order issued letters asking the resident members to try and make room in their homes for the visitors and it is thought that over 1,000 were placed in this manner.

On every street Woodmen badges were in evidence. The Omaha badges are white with red and blue letters on them, while the visitors wear various designs. Among the prettiest ones, which are being worn by Lincoln members, is a gilded stamp of unusual size, with the axes crossed on top and "W. O. W." engraved below.

The resident members were appointed

### SOVEREIGN CLERK OF THE WOODMEN OF THE WORLD.



JOHN T. YATES.

as one large reception committee and were busy entertaining their guests and visitors. The new building at Fourteenth and Farnam streets was viewed from the interior and exterior by thousands of visitors in the morning. A large number were taken to the roof of the building, where a good view of the city could be obtained.

**Marshall's Albino Cockroach.**  
An albino cockroach, white as snow, but possessed of fighting tendencies seldom equaled in the family of Mr. Roach, has become a permanent occupant of the "toilet drawers" in Governor Marshall's desk in the Indiana state capital.

Not content merely with being an occupant of the governor's premises, the insect has established a reign of terror among the "plain garden varieties" of the roach family, which have infested the statehouse for many months.

Yesterday the "purged" roach gave battle to another of his kind—too forward and too foolish. The other was merely a brown roach, but he boldly approached the tobacco drawer from the underside to camp therein. The albino saw him and forthwith gave no quarter. When Governor Marshall opened his drawer the "white plague" was dragging his adversary to the roach cemetery.

Attaches in the governor's office will make affidavit that such were the happenings.—Indianapolis News.

### The Coal Strike-Off.

In Detroit the other day President Underwood of the Erie railroad declared that the present high cost of coal is due to retail and wholesale dealers and not to the coal operators or to the railroads. The railroads have not increased their rates in twenty years; the mines have made a increase of but 25 cents a ton. If the price of coal in Detroit and other cities has increased from \$1 to \$3 a ton, the wholesalers and retailers are getting the lion's share of it. There is never any question as to who gets the short end.

### BIGGEST ENGINE IN WORLD

Enormous Tractive Power, with Superheating Surface of 1,310 Square Feet.

A locomotive with 115,000 pounds tractive power breaks all previous records. A unit as powerful as this is astounding. This tractive power is provided in the four Mallet locomotives which have just been built for the Virginian railway, and is obtained with less than 50,000 pounds average weight per driving axle. Considered from that point of view, these locomotives have an added significance.

In all parts of the country railroad officials are considering how to secure the power required to most efficiently meet a particularly difficult service without exceeding the existing limitations on axle loads. This was exactly the problem on the Virginian railway, and these locomotives were developed to meet it.

They will each be able to haul 155 loaded fifty-ton capacity freight cars at ten miles per hour; each has sixteen driving wheels; locomotive and tender weigh 752,000 pounds, and the firebox is large enough to hold a donkey switching locomotive. With these locomotives in helper service the officials expect to increase the maximum train load over a fourteen-mile, 2.67-per-cent grade to 4,200 tons.

The crucial point on the entire line over which all tonnage passes is that portion between Emory and Clark's Gap, on the Deepwater division. A distance of about fourteen miles. The last eleven and a half miles of this is on a 2.67-per-cent grade, with maximum compensated curves at twelve degrees. For the first two and a half miles the grade is 5 per cent. At present trains are usually operated over this grade with one Mallet of the lightest class at the head and two of the heavier locomotives as helpers.

With this power the maximum train over the mountain is 3,300 tons. This is, approximately, 500 tons less than the Mallet road engine can take through over the remainder of the division. As the road is single track and the volume of traffic constantly increasing, it is essential to increase the maximum through tonnage.

The enormous locomotives were developed in order to accomplish this result without increasing the number of locomotives which the present maximum train requires over the ruling grade. They will take the place of the Mallets now used as helpers, which will be put into road service. With two of the Mallets as

helpers and one of the class having 52,000 pounds tractive power as a road engine, making a combined tractive force of 322,000 pounds, it is expected, as previously stated, to take a maximum train of 4,200 tons over the Clark's Gap grade. The road engine, unaided, will take this train through to Princeton, the terminal of the division.

Apart from the enormous weight and power of the locomotive as a whole, the dimensions of some of the principal parts are impressive as showing the extent with which all limits were exceeded in its design and construction. The following warrant special attention: Outside diameter of boiler at largest ring, 112 inches; tubes, 34, 2 1/2 inches diameter; flues, 48, 5 1/2 inches diameter; heating surface, 8,700 square feet; superheating surface, 1,310 square feet; firebox ring, 19 1/2 x 119 inches; length of boiler, 50 feet 1 1/2 inches; low-pressure cylinders, 44 x 22 inches; high-pressure cylinders, 22 x 22 inches; tender capacity, 12,000 gallons of water and 15 tons of coal.

Following the builder's latest approved practice for this type of locomotive, the engines are equipped with superheaters. The superheater is of the fire-tube, double-loop type. The superheated tubes are contained in forty flues three and a half inches in diameter. Vanadium steel was extensively used for those parts which are subjected to the greatest strain. The parts constructed of this material include engine frames, crossheads, driving wheel thro, driving engine trailing and tender truck springs, main driving axles, main crankpins and piston spiders. Likewise, the cylinders and valve chamber bushings were constructed of cast iron with vanadium content.—Manufacturers' Record.

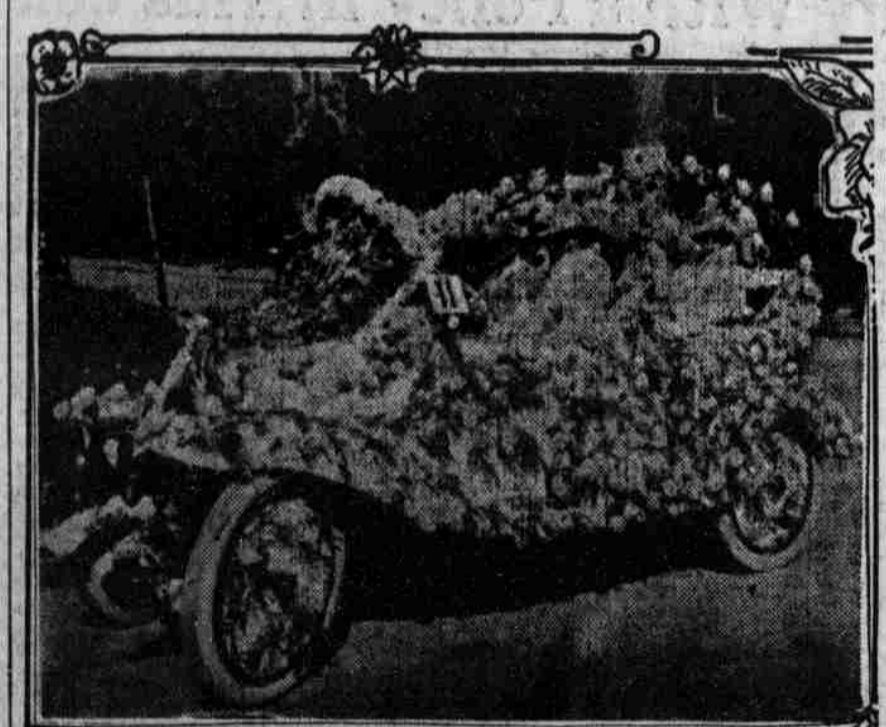
**The Missing Adjunct.**  
"There was a very disagreeable wait at the Muggleton's wedding last evening. The bride was in tears, the bride-

groom's collar matted, the pastor fell asleep in his study, and the organist played, "Oh, Promise Me," eleven times. "What in the world was the trouble?" "Why, the moving picture man's auto struck a fire hydrant and his whole outfit went to smash."—Cleveland Plain-

**Tragedies Told in Headlines.**  
"Mr. Ardup's Rich Uncle Entirely Cured of Dropsy."  
"Young Naval Officer, on Wedding Trip, Becomes Violently Headach."  
"Florist Makes Scene Dunning Handsome Actress for Big Bouquet."  
"Three Men on Bases; Gnat Flies in Bateman's Eye."  
"Reporter Sent to Panama to Roast Canal; Tells Truth and Loses Job."  
"His First Attempt to Umpire a Ball Game in Gory Gulch; Complains Loudly of Conditions in Hospital."  
"Awkward Mistake; Young Man Making Call Sends up Card of Previous Renter of Evening Suit."—Chicago Tribune.

**Pointed Paragraphs.**  
Publicity is the mother of much charity.  
Good cooks are also born—once in a great while.  
A child saves its parents a lot of money by not being twins.  
The words of a woman may sound consoling even if they are not.  
The average girl is capable of loving almost any fellow that she abounds.  
A glutton is one who overloads his stomach with food that others are hungry for.  
Nearly every mother gets in bad when it comes to selecting a middle name for her baby boy.  
The average man would be glad to see his wife's relations—if he could look at them over a long distance telephone.—Chicago News.

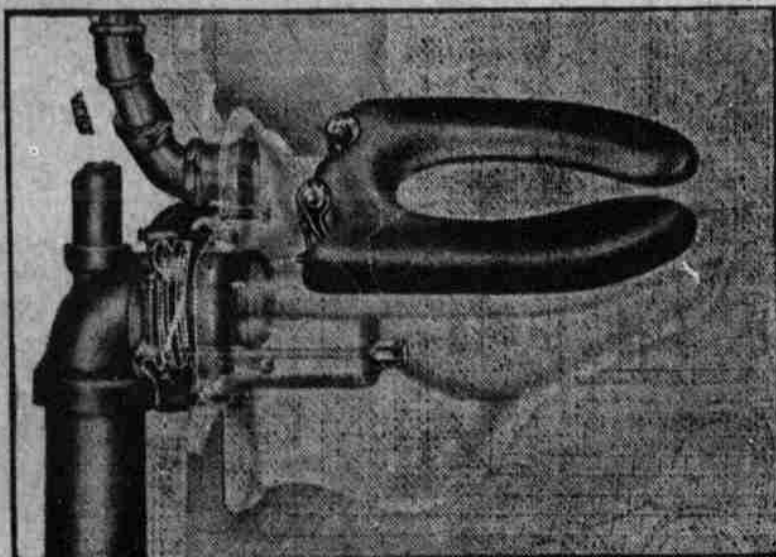
### Winner in Floral Parade



The automobile entered in the Flower parade Tuesday by Mrs. Emma B. Manchester was judged to be the most beautifully decorated car in line. Mrs. Manchester is supreme guardian of the Woodmen circle, which is the women's auxiliary to the Woodmen of the World.

## The Wall Outlet Closet

Installed in the Woodmen of the World Building



THE JETECTOR

This is the highest type closet on the market. It economizes on water, self-venting, cannot clog up and does not touch the floor. Notice the sanitary features.

After investigating all types and makes of plumbing fixtures, our goods were selected as being the most efficient, sanitary and the highest class obtainable.

Fixtures installed by J. J. Hanighen Co., Omaha, Neb.

**FEDERAL-HUBER COMPANY, Chicago**

**Special Announcement!**  
When inspecting Omaha's newest and most magnificent building do not fail to visit it!  
**New Men's Shop**  
on the Fourteenth street side, devoted exclusively to  
**Men's Hats**  
and  
**Correct Dress Accessories**  
You will find it as complete in every detail as the building itself.  
The honor of your visit is desired  
**Walter A. Stringfellow**  
W. O. W. Bldg.  
An acceptable Souvenir "The Busy Corner" Given with each purchase  
Fourteenth at Farnam

NO BETTER GLAZED BUILDING IN THE WORLD  
**21,000 Square Feet**  
—  
**IMPERIAL PRISM PLATE GLASS**  
(Upper Sash Exterior Windows)  
**Imperial Prism Plate Ornamental Glass**  
(Corridor and Intermediate Partitions and Doors)  
**Woodmen of the World Building**  
**SEE IT!**  
Made Exclusively by the  
**Pressed Prism Plate Glass Co., of Chicago, Ill.**  
FOR SALE BY GLASS JOBBERS EVERYWHERE.

**Beaman Insurance Agency**  
We want your business and we will prove it  
**INSURANCE**  
Fire Plate Glass Liability Automobile  
Tornado Bank Burglary Accident Live Stock  
Rent Theft Health Steam Boiler  
New Location W. O. W. Bldg. OMAHA, NEB.  
Phone Douglas 396

**The FACE BRICK**  
For the New W. O. W. Building was furnished by us.  
**Hydraulic Press Brick Company**  
We will remove our office and display rooms to the new Woodmen of the World building about November 1.

**We Furnished All the Glass for the Woodmen of the World Building**  
**MIDLAND**  
**Glass and Paint Co.**  
OMAHA