

VELIE

MOTOR ¹⁹¹³ CARS

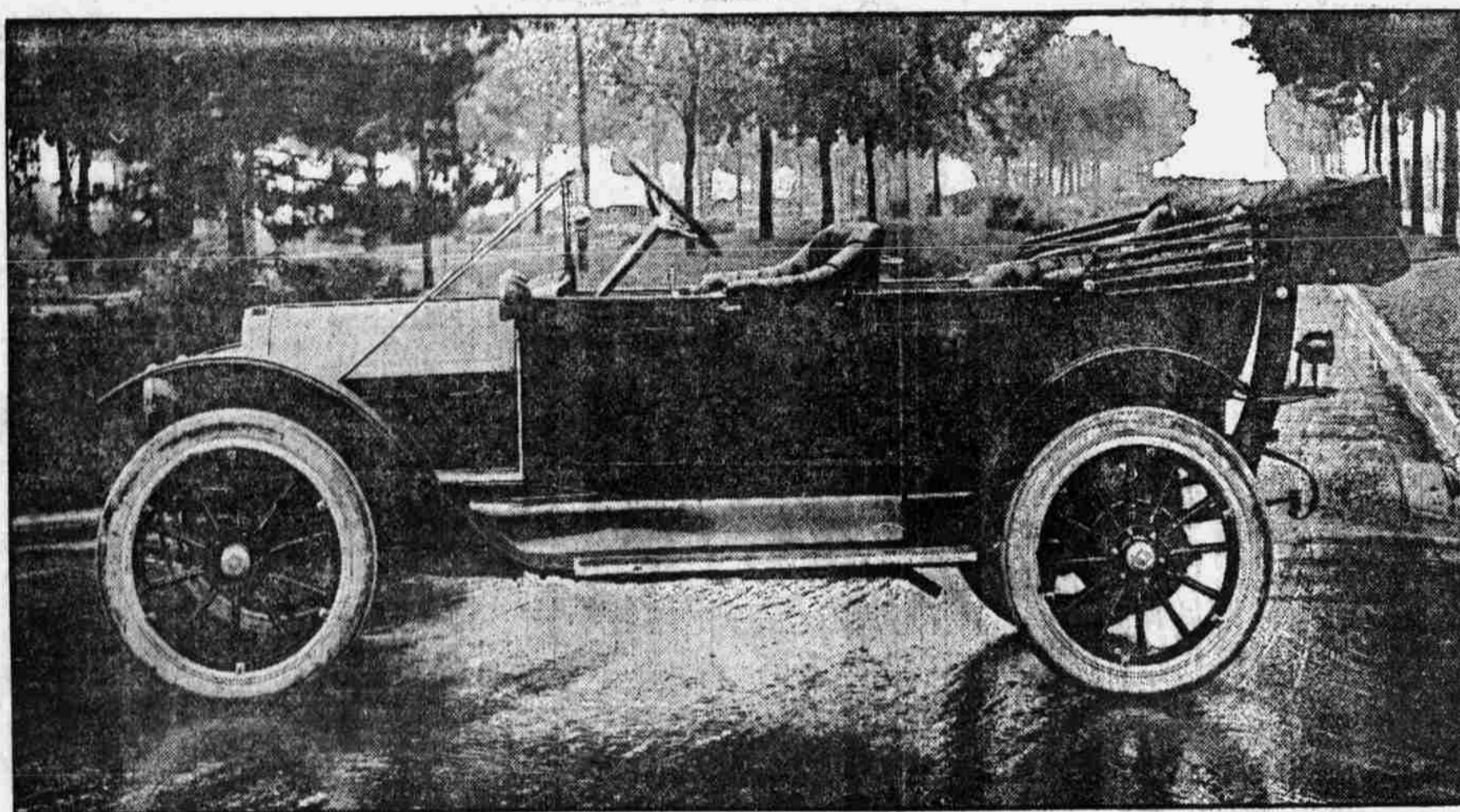
*Electric Lighted
Throughout*

**The 1913 Velie
"Pacemaker"**

A new class of motor car distinctive in itself. For the first time the purchaser is able to secure a light weight, five passenger car, embodying better design, stronger construction and completely equipped at a price well within the reach of the majority. A medium sized car, seating five people with comfort, exceptionally easy riding and with sufficient power for every condition.

SPECIFICATIONS:

Motor—4-cylinder, 3 1/2 bore, 5 1/2 stroke, 22 horse power at 1,000 revolutions per minute. Silent chain drive in place of timing gears. Bosch magneto, dual system. Oil pump, visible gauge and sight circulation. Stromberg carburetor. Three disc dry plate clutch. Brown Lipe selective sliding gear transmission. Double universal joint. Floating rear axle, 34x3 1/2 tires. Mohair top, glass front, demountable rims with extra rim, tire irons and complete set of tools. Price \$1,350.



The 1913 Velie "40" is Truly a Masterpiece

—the designers of this car have overlooked nothing, the absence of which would detract from its completeness. Identified with no "class"—excepting its own—it finds ready sale, not only to those buyers limited in price, but to those who can afford the most luxurious motor cars. Mechanically right in the past—the 1913 improvements are principally refinement of detail. The electric lighting and electric starting device is compact, simple, positive and efficient—the Gray & Davis system. A quiet, smooth running motor—noiseless transmission—long wheelbase—soft easy springs—a classy, comfortable car.

SPECIFICATIONS:

Motor—4 cylinder, 4 1/2 in. bore, 5 1/4 in. stroke, 40 horse power at 1,000 revolutions per minute. Silent chain drives in place of timing gears. Bosch magneto, dual system. Oil pump, visible gauge and sight circulation. Stromberg carburetor. Full honeycomb radiator. Three disk dry plate clutch. Brown Lipe selective sliding gear transmission. Double universal joint. Timpken full floating rear axle. Left hand steer, center control. Gray & Davis electric lighting and electric starting system. Mohair top, glass front, speedometer, demountable rims with extra rim, tire irons and a complete set of tools. Price, \$2,000.

*Electric
Self-Starting
Motor*

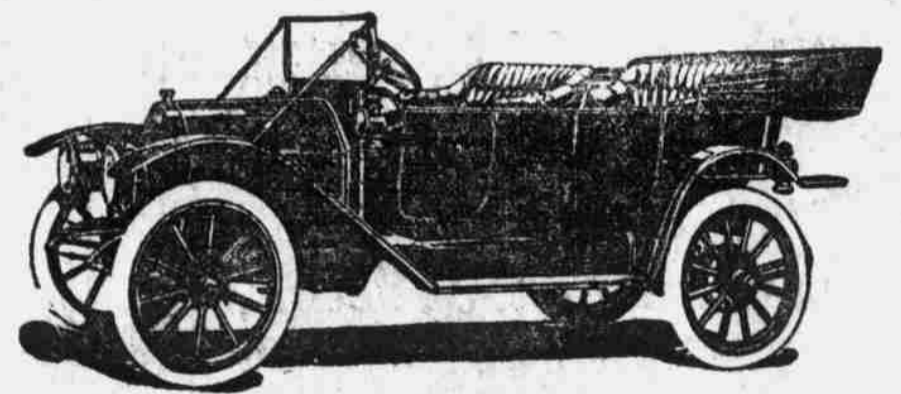
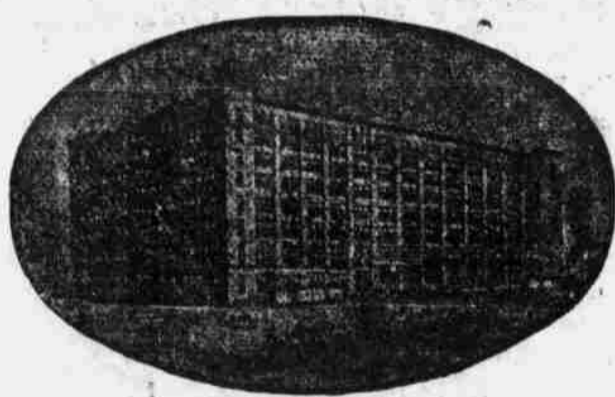
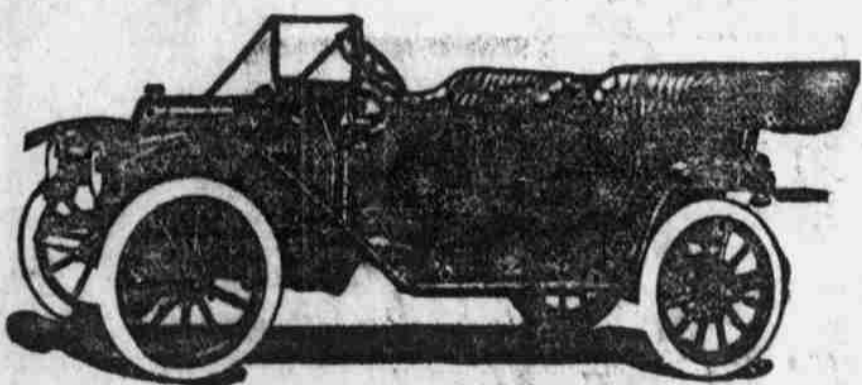
**The 1913 Velie
"Dispatch"**

Is the car for enduring service. Built from the ground up of materials equal in quality to that in many cars selling at double its price. Designed for a general purpose car of sturdy construction and possessing all the little refinements and equipments so much appreciated. A medium sized car seating five people comfortably and possessing plenty of power for all conditions. Specially equipped and electric lighted and electric started Gray & Davis system.

SPECIFICATIONS:

Motor—4-cylinder, 3 1/2 bore, 5 1/2 stroke, 32 horse power at 1,000 revolutions per minute. Silent chain drive in place of timing gears. Bosch magneto, dual system. Oil pump, visible gauge and sight circulation. Stromberg carburetors. Three dry disc plate clutch. Brown Lipe selective sliding gear transmission. Double universal joint. Floating rear axle, 34x4 tires. Left hand steer, center control. Gray & Davis electric lighting and electric starting system. Mohair top, glass front, speedometer, demountable rims with extra rim, tire irons and complete set of tools. Price \$1,500.

HOME OF THE VELIE IN OMAHA



It's the signature and the resources behind the name signed which make the figures on the check mean something

The Velie car of today is the product of a factory organization of specialists, each an expert in his particular line; result, a car of beautiful design, taste, richness, dignity, ease and comfort. Elegance and refinement are everywhere strikingly in evidence—a wonderful car at a moderate price.

The Velie Car--Service and Satisfaction

JOHN DEERE

Denver Winnipeg San Francisco Minneapolis 10th and Howard Sts., Omaha, Neb. Kansas City Dallas Baltimore New York
Oklahoma City Moline Portland Sioux Falls St. Louis Indianapolis Syracuse Atlanta