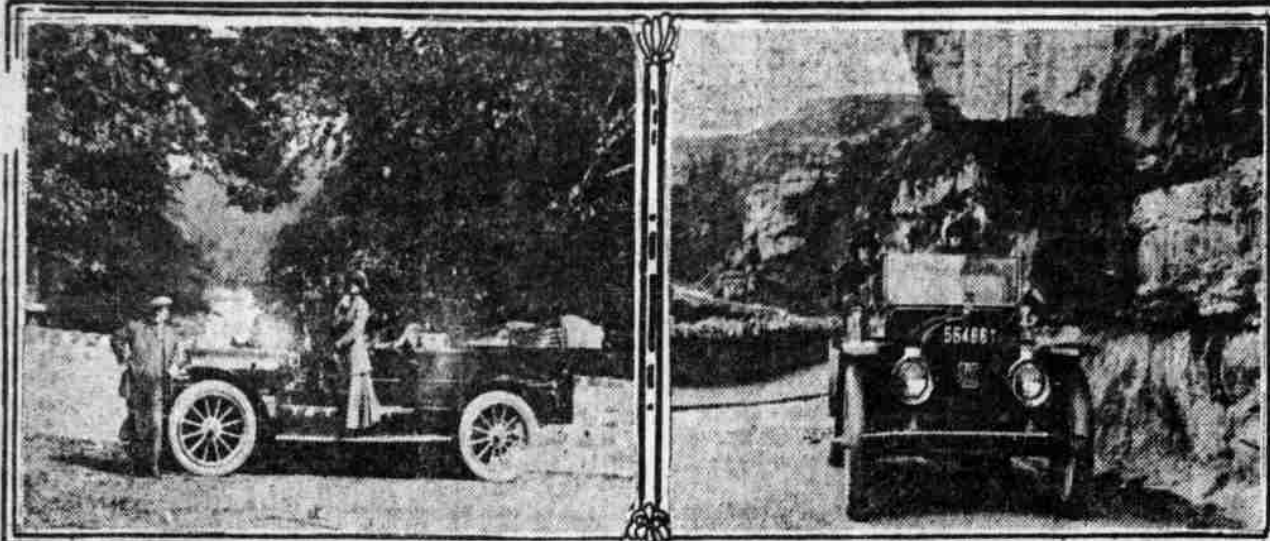


An Actor and the Automobile



At Golden Gate Park - San Francisco On the road at Llandudnow, Wales

"I don't know what it is exactly," said Will M. Cressy, who, with his wife, was at the Orpheum theater last week, "but there is something in my makeup that just won't let me sit still. I have got to be going somewhere all the time. My mother says I was a fairly good, obedient youngster—until it came to running away; and nothing ever did break me of that—even yet.

"Any one would think that the traveling we have to do in our theatrical work, extending over nine months of the year and covering from 15,000 to 30,000 miles a year, would be enough; but it isn't. The minute we close our season, instead of going home, and we have a couple of dandy homes up there in New Hampshire, too, instead of going home we pile into that automobile of ours and start out 'going somewhere.'

"I never see a road from the car window without wondering where it goes to, what lies beyond the hill, around the turn in the road. I don't care for 'joy riding'; I don't want to ride around town; I want to start out early in the morning and go on—and on—and on—over the hills and through the valleys, by the lakes and the rivers, through the farm lands and the villages, across the prairies and the deserts, to climb the mountain ranges; but always to go on and never come back.

"And let me tell you, I have certainly 'gone on' some. Here, wait a minute," and he turned to his trunk and drew out an old, well worn note book. "Let me show you just how much of this old world we have showed under our car in the last eight years. We got our first automobile in May, 1906, and here is our mileage since then:

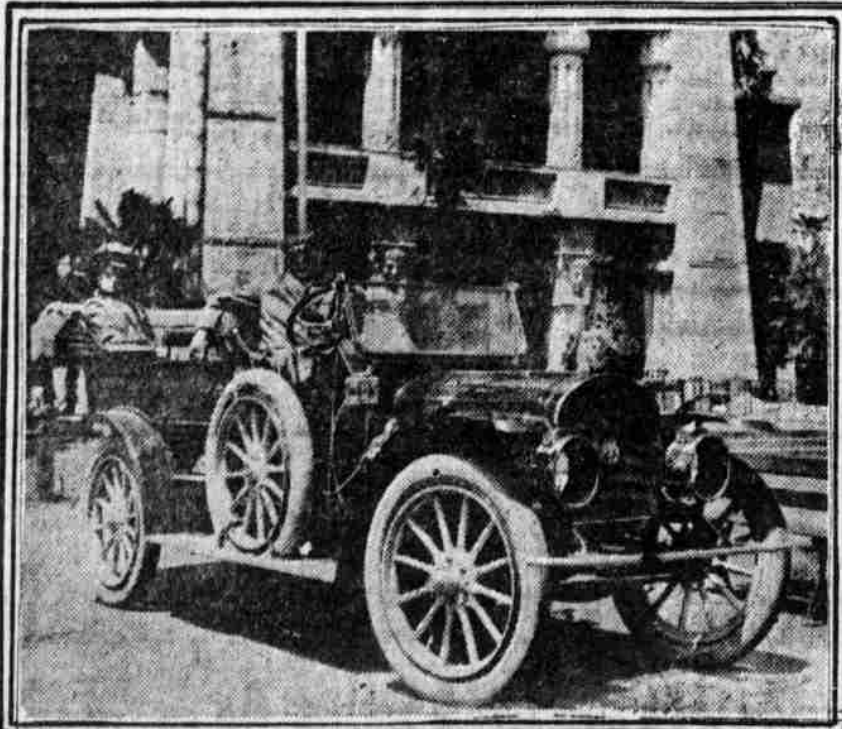
In 1906, 6,632 miles; 1906, 6,820 miles; 1907, 8,743 miles; 1908, 16,088 miles; 1909, 9,111 miles; 1910, 18,218 miles; 1911, 7,109 miles; 1912, 8,559 miles. Total, 70,322 miles.

"And I tell you 70,000 miles is some distance. In that eight years we have covered the United States pretty thoroughly. We have been from Bangor, Me., to New Orleans. We thoroughly explored Maine, Vermont, New Hampshire, Massachusetts, Rhode Island, Connecticut, New York and eastern Canada.

"We have crossed the continent; we spent six months on the Pacific coast. We explored Oregon and California from end to end.

"We took our car to Honolulu and spent six weeks exploring that earthy paradise.

"Then we journeyed back over the



In Honolulu - Hawaii

mountains across the deserts and prairies and back east to New York. Then we shipped the car to Cherbourg, France, and spent five months in France, Holland, Belgium, Wales, Ireland, Scotland and England.

"And if my car, my health and my pocketbook hold out we are going to see a whole lot more of the old world, Spain, Italy, Germany, and Switzerland will probably come next. And then I have just got to have a look at the Australian country.

"What? How do we get time to act? Oh, we just kind of mix it in along with the traveling; for instance, while we were doing that 24,000 miles during the summers of 1910 and 1911 we played the entire Orpheum circuit. Mr. Beck allowed us to do a few weeks, then take a week, or more, to make our jumps to the next towns. Then during our five months in Europe last summer we played Liverpool, Manchester, Portsmouth and London, England, and Edinburgh, Scotland."

The writer's intentions, when he called upon Mr. Cressy was to get some information about the stage, but it was not

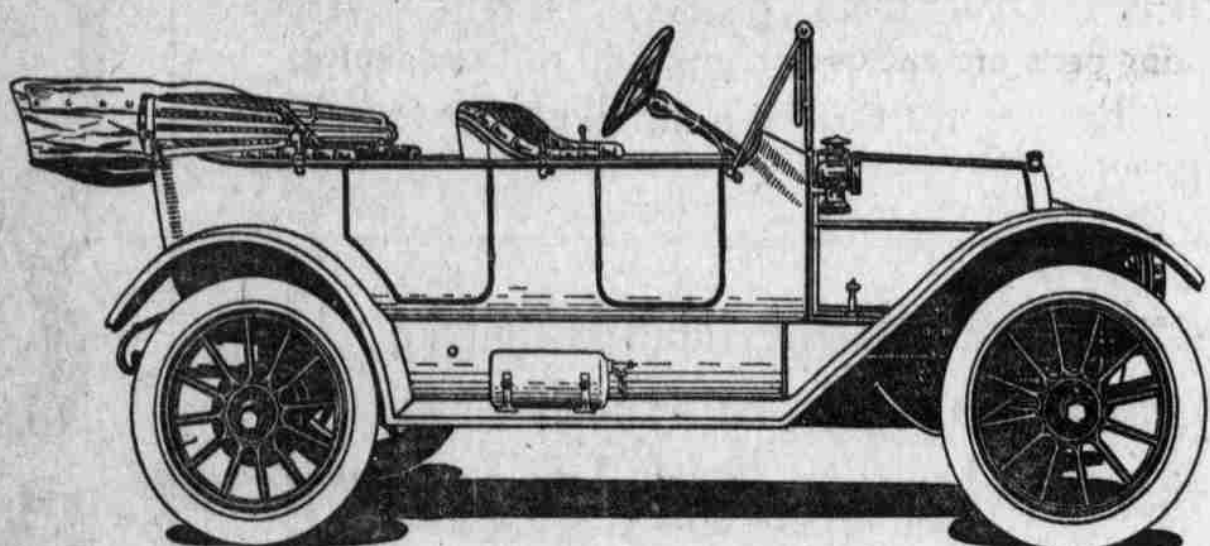
to be; Cressy would talk about anything else. "What is the use," he said, "The folks that like us know all about our stage work now. And the ones that don't like us don't want to know anything about it. But everybody likes to travel; and to hear about strange places."

So here it is about the traveling and the strange places, and for proof of his statements he shows photographs of Cressy and Dayne in the auto in all sorts of out-of-the-way corners of the globe.

Peristent Advertising is the Road to Big Returns.

CARS FOR FLORAL PARADE DONATED BY BIG DEALER

H. E. Fredrickson has placed cars at the disposal of the directors of Ak-Sar-Ben for the automobile parade. The offer will probably be accepted. Fred has always been a booster for the local festival and this year has been doing all in his power to make it a success.



Price \$1200

Including mohair top and top envelope, windshield, Prestolite tank and mechanical tire inflator; nickel finish.

Richmond

- Tires, 34x3½.
- Wheelbase, 112 inches.
- Paint, dark maroon.
- Steering Gear, irreversible, wheel 18 inches.
- Rear Axles, 1½ inches.
- Ball Bearings, ¾ ins., annular.
- Transmission Gear, 1½ in. cogs.
- Control, center.
- Cooling System, syphon.
- Lubrication, splash and pumps.
- Clutch, cone, leather face.
- Brakes, double expanding.
- Axles, semi-float.
- Engine, 4x4½ in.

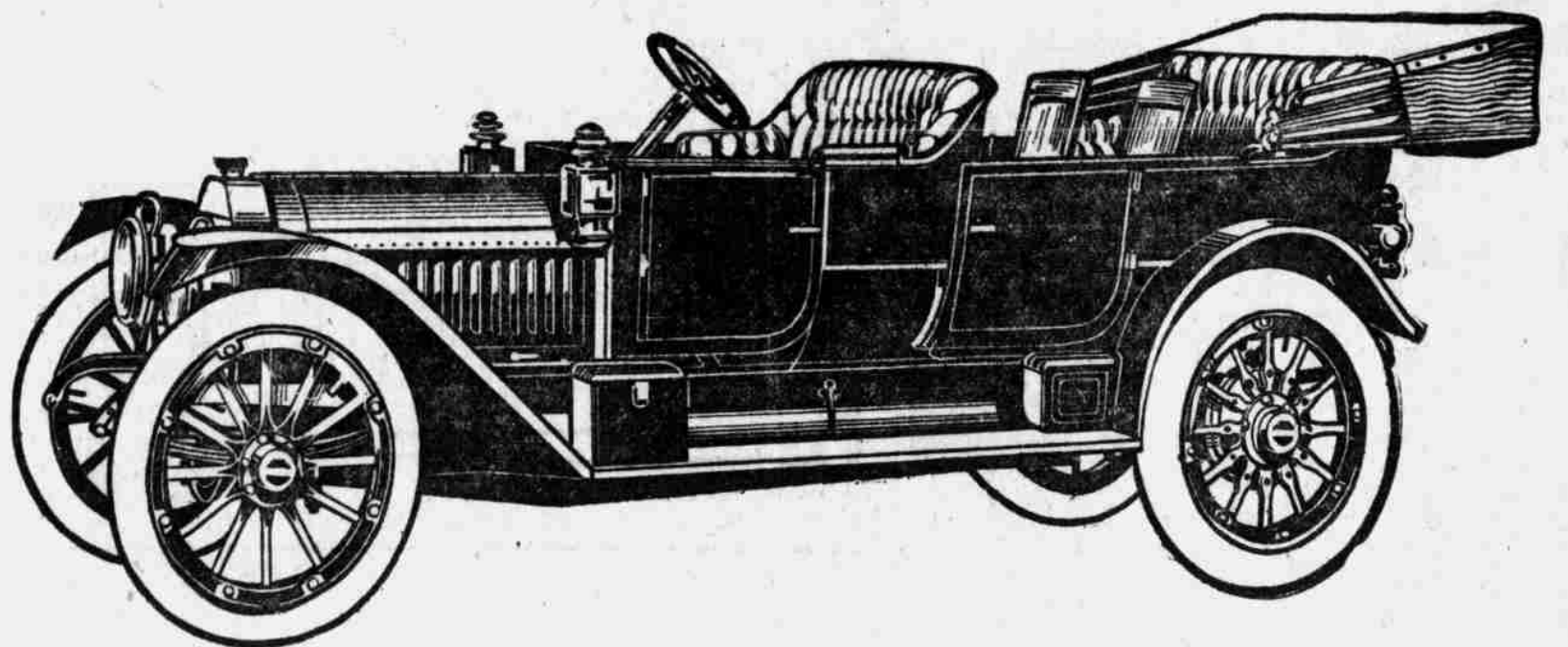
Make Your Own Comparisons

Pioneer Implement Co.

Western Distributors

Council Bluffs, Iowa

1913 Locomobile



The Big Six with 82 Horsepower Ride In It

Now in its third season and at its highest development. Ride in it.

Comfort: Our unique combination of Ten Inch Upholstery, long wheelbase, elastic alloy steel springs, and perfect balance.

Beauty: Low, sweeping lines, graceful curves, elegant Finish and Appointments.

Power: Most powerful Locomobile model ever built. Long stroke motor develops 82 horse power.

Convenience: A Big Six, but not too big. 136 inch wheelbase. A happily proportioned seven-passenger car.

Equipment: The most efficient and completely developed electric lighting system. Air compressor for inflating the tires. Ventilated windshield. Extra tires carried at rear. Clean running boards. Disco starter for starting the motor.

1913 folder on application.

Locomobile Company of America

General offices and works, BRIDGEPORT, CONN.

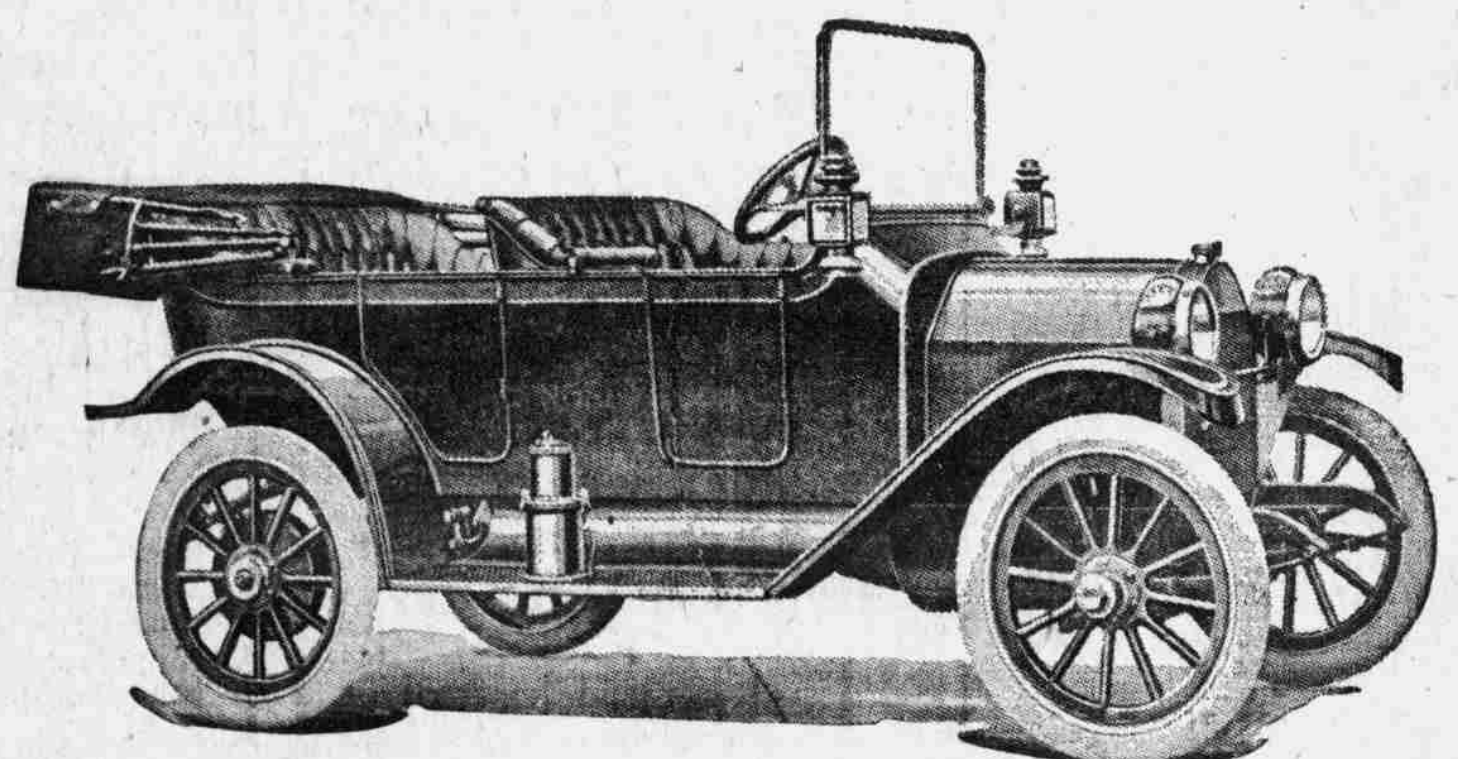
Deright Automobile Co., Distributors

1818 FARNAM STREET



The Detroit—\$850

THE BALL BEARING CAR



1913 MODEL

These Features

1913 MODEL

Distinguish The Detroit

Long Stroke Motor—Four Cylinder—Cast En-Bloc—Enclosed Valves—Three Point Suspension—Unit Power Plant—Multiple Disc Clutch—Platform Rear Springs—Full Floating Rear Axle—Extra Large Adjustable Bevel Gears—Pressed Steel Rear Axle Housing—Left Hand Drive—Center Control—Adjustable Worm and Nut Steering Gear—Drop Frame—Extra Large Tires—Complete Ball Bearing Car.

We have cars ready for immediate delivery. Call for demonstration

The T. G. Northwall Company

912-14 Jones Street.

Telephone Douglas 1707

Everybody reads Bee want ads