

THE CAR

Wheelbase—110 inches.

Motor—Long-stroke; 4 cylinders cast en bloc; $3\frac{1}{4}$ inch bore, 5-inch stroke. Two-bearing crank shaft. Timing gears and valves enclosed. Three-point suspension.

Steering—Left Side. Irreversible worm gear, 16-inch steering wheel. Throttle control on steering column.

Control—Center Lever operated through H-plate integral with universal joint housing just below. Hand-lever emergency brake at driver's right. Foot accelerator in connection with hand throttle.

Springs—Front, semi-elliptic; rear, full elliptic and mounted on swivel seats.

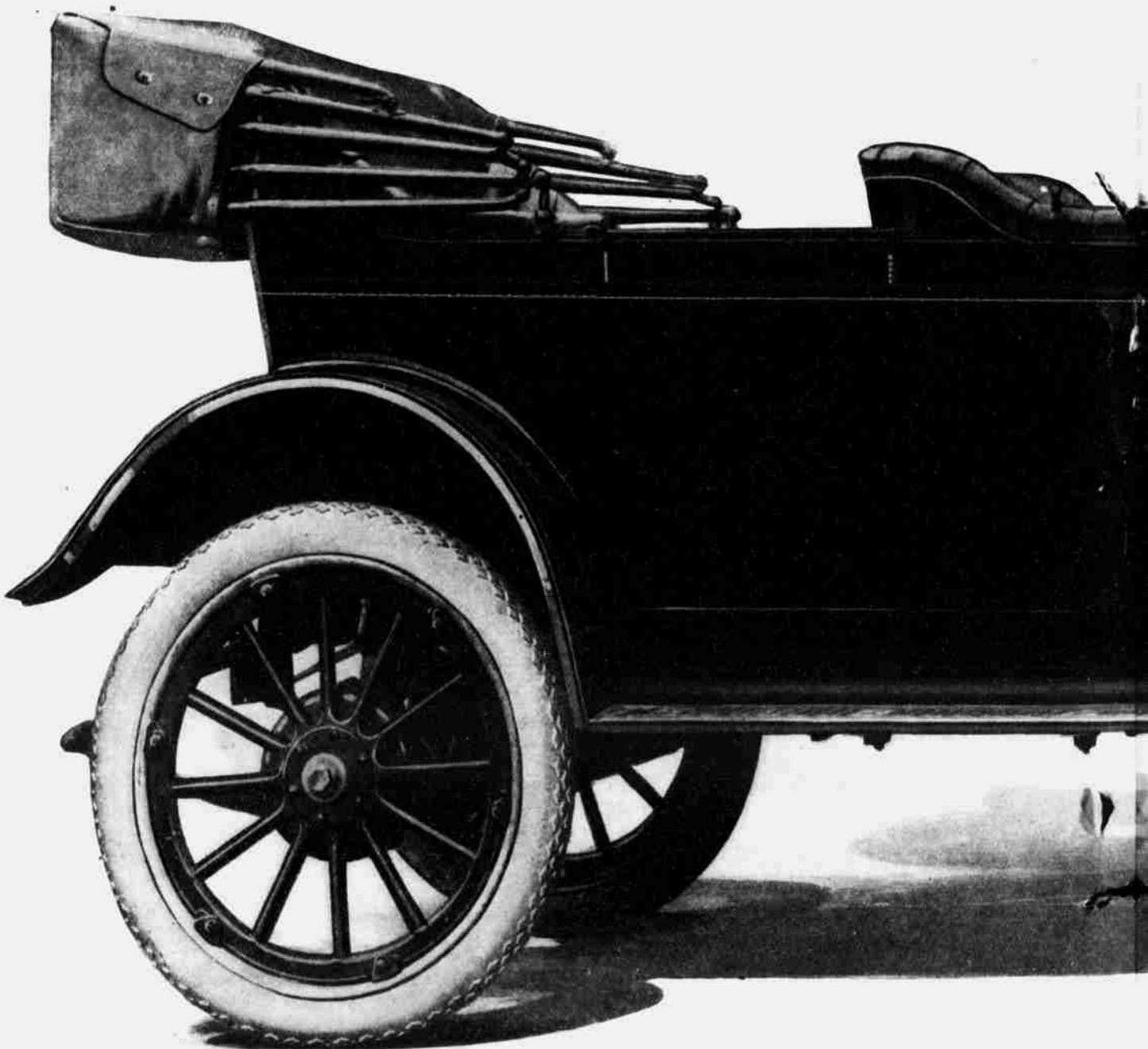
Frame—Pressed steel channel.

Axles—Front, I-beam, drop-forged; rear, semi-floating type.

Transmission—3 speeds forward and reverse; sliding gear, selective type.

Construction—Drop-forgings wherever practicable; chrome nickel steel used throughout all shafts and gears in the transmission and rear axle; high carbon manganese steel in all parts requiring special stiffness.

Body—Full 5-passenger English type; extra wide seats.



R-C-H "Twenty" "The Car"

A Remarkable Car

HERE is a car as sturdily built as any in the world, no matter what its price. There are 244 separate drop-forgings in the R-C-H. Many parts that are drop-forged in the R-C-H are still represented by castings even in high-priced cars. And drop-forgings are practically indestructible, which is not true of castings.

The motor is long-stroke—bore $3\frac{1}{4}$ inches, stroke 5 inches. This means exceptional power, smooth running and

wonderful fuel economy. The motor will take you and your family wherever you want to go; over any kind of roads, and faster than you'll ever want to travel.

The body is the beautiful English type, now so widely in use among the highest-priced cars. It accommodates 5 passengers comfortably. The spring suspension is ideal for easy-riding.

In comfort, power, beauty, durability and economy, the R-C-H will more than satisfy your every desire.

A Remarkable

EVERY one knows that certain equipment and accessories are absolutely essential to complete motoring enjoyment.

Yet heretofore the motorist has been obliged to purchase these as extras, or go without.

On the R-C-H you will find every necessary accessory, and every item of the best possible quality. We do not

R-C-H CORPORATION, 219

Branches—ATLANTA, 548 Peachtree St. BOSTON, 563 Boylston St.
CLEVELAND, 2122 Euclid Avenue. DENVER, 17th St.
KANSAS CITY, 3501 Main St. LOS ANGELES, 10th St.
NEW YORK, 1989 Broadway. PHILADELPHIA, 15th St.
WALKERVILLE, ONT., CANADA.

R-C-H dealers in over 1200 other cities.

SEE IT AT THE NEAREST DEALER