

The 1913

**Overland**The Complete  
Equipment of the 1913**Overland**

Includes—

Self Starter  
30 Horse Power  
5 passenger Touring Car  
Center Control  
110-inch Wheel Base  
Timbkin Bearings  
Prestolite Tank  
\$50 Remy Magneto  
\$50 Warner Speedometer  
\$50 Mohair Top and Boot  
\$25 Clear Vision Wind Shield  
All Bright Parts Nickel Plated

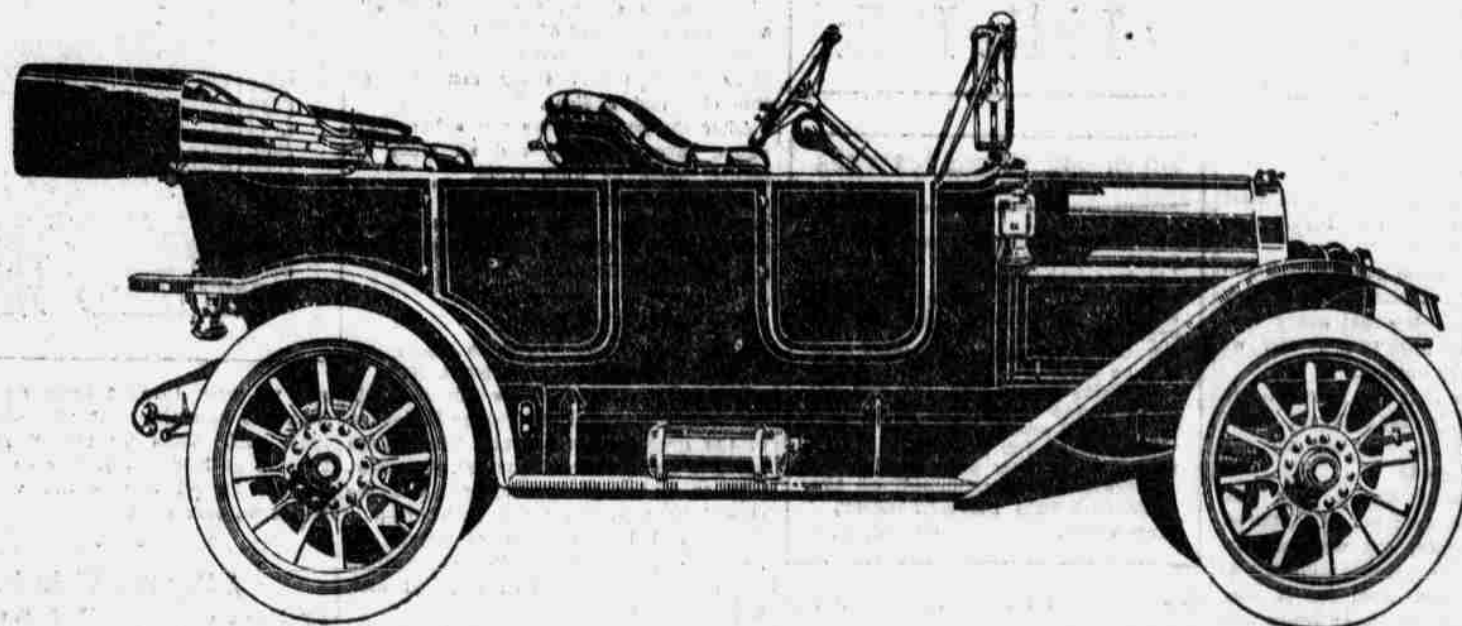
Only

**Now Ready**  
**\$985**

Completely Equipped

**This Year****It's a Better Car Too!****40,000 Cars Per Year Makes This Value Possible---**

The price of the Overland car has decreased as the number manufactured and sold have increased, because the manufacturers realize that lower prices mean more cars sold and are well satisfied to make a smaller margin of profit per car as long as the quality of the output is maintained to its former reputation of being the best quality car at the most reasonable cost.



Every opportunity to make Better Cars are grasped by the manufacturers of the Overland Car so that you'll find the 1913 style to be the best car for the least money on the market—

The Overland has satisfied thousands, and 1913 buyers will not be disappointed.

**Van Brunt Automobile Co.**Council Bluffs,  
Iowa.

31-35 Fourth Street

Distributors

**Omaha Agency**

309 South 19th Street

## At the Playhouses

**R**EAL burlesque in its truest form, chock full of the latest comedy, ringing with good music, gorgeous dressing, magnificent scenery and electrical effects, humor, fresh and wholesome, will be the line of attractions on the Empire circuit which are promised at the Krug theater this season, commencing with a matinee today.

The opening attraction, the Jardin de Paris girls, is the first of the newer order of shows, and is a musical comedy in two acts entitled, "At the Beach." The first act is the interior of the Brighton Beach hotel and the entertainment is worthy of its name as far as swift comedy, catchy songs, nimble dancing and humorous scenes are concerned. Particular attention has been paid to the costuming and mounting. All in all, the performance will give pleasure and satisfaction. The cast is a notable one, including Leo Stevens, Joe Madden, Tom Nolan, Lydia Jospy, Stella Gilmore, the Tierney Four, Rosalie Rose, Helen Marvelle and a chorus of thirty girls that can sing and dance.

Between the first and second acts a splendid olio is presented and includes the famous Tierney Four, a quartet par excellence. Rosalie Rose, character comedian, and living art studies by famous artists.

The Gayety's summer season had to be terminated in order that various improvements can be made in the theater before the opening of the regular season of vaudeville and high class extravaganzas which starts on Sunday, August 26, with Clark's "Runaway Girls."

Thousands in whom an appetite for popular price vaudeville was created will not have long to wait until they can see even a better entertainment consisting of the best of moving pictures and vaudeville, as the policy of the Hippodrome (formerly the American theater) will be not unlike that which maintained at the Gayety all summer, except that a much more attractive program will be offered. The advance sale of seats for the Gayety's opening attraction will start next Thursday morning at 10 o'clock.

Dave Lewis, that fun-making comedian, will come to the Brandeis theater next Sunday matinee, and will be seen during his four days' engagement in Campbell Casad's new play, "Don't Lie to Your Wife."

This piece had a long run at the Whitney Opera house, Chicago, last year and was one of the most successful plays playing the various cities last season. During the action of the play, several very catchy musical numbers are introduced, which are noted for their consistency, not being "dragged in," but very deliciously blended into the comedy. Mr. Lewis is very capably supported by a capable cast. A special matinee will be given on Wednesday.

In announcing the opening of the season, which event is set for just a week hence, Sunday, August 26, the chronicler of events and exploiter of things to be at the cozy Orpheum is prolific in promising the devotees of smart vaudeville many of the good things that help make this form of entertainment so very popular. The pretty playhouse has received careful attention in preparing it for the comfort of patrons and those who admire pulchritude. A large force of artists and mechanics has been engaged on the work for the greater part of the summer. The decorations have been much enhanced.

STELLA GILMORE  
AT THE KRUG

One painting in particular is noted. It is an allegorical picture by Fuchs done in oil on a canvas 3x4 feet which has been mounted on the sounding board portion of the ceiling. Four new sets of scenery have been added and all of the old sets have been retouched in such a thorough manner that the entire investment is now virtually new. The lighting of the entire theater has been improved. Several thousand candle-power has been added to the stage lighting facilities alone, which it is believed will make the stage one of the best lighted in the country. New carpets have been laid and everything made epic and span from pit to dome.

Six days of treats for music lovers and for the general public, which, while not claiming to be a connoisseur, yet admits enjoying the best in concert bands and symphony orchestras, open this afternoon at Manawa. Conway's band of forty pieces is scoring successes this, its tenth season, and with its soprano, Miss Josephine Dunfee, will give concerts each afternoon and evening. Their engagements usually last three weeks, but this season it is booked full. They are trying to satisfy the public and make new friends by giving one week concerts in August and September.

Chicago critics speak of Conway as "The logical successor to Gilmore," and it is predicted that in this part of the west the spines of this likening will be readily recognized. For this evening the program is:  
PART I—8 TO 9  
Overture, "Maritana".....Wallace  
Caprice, "Les Chanteurs Hongrois".....

.....Michiels  
Coronet Solo, "Fantasia Brilliant".....Urban  
.....John Dolan  
Suite from the ballet, "The Swan Lake".....Tschalkowsky  
(a) Valse  
(b) Dance of the Swans.  
(c) Casardas  
March, "Father Rhine".....Lincke  
Intermission  
PART II—10 TO 11  
Scenes from "La Boheme".....Puccini  
Selection, "The Pink Lady".....Caryl  
Soprano Solo, "La Primavera".....Strauss  
.....Miss Josephine Dunfee  
Fantasia, "The Shamrock, Rose and Thistle".....Baetens

That the "Summer Park" has procured for itself a high place in the esteem of those seeking amusement and outdoor recreation, is evidenced by the large crowds entertained at Krug Park and the uninterrupted patronage during the summer. Fraternal organizations have been holding their annual outings at this picturesque place. Many bring their family basket lunches to enjoy the day, the fresh breezes and cool shaded places.

Lovers of dancing are taking advantage of cool evenings. They find a rare treat extended by excellent music and large new floor in the open air hall. Cool evenings, excellent music and the large floor in the open air hall at Courtland Beach combine to offer dancers a splendid opportunity to enjoy themselves. A chance to enjoy all kinds of summer recreation. On the lake front are gas facilities for boating, swimming and fishing. Fresh breezes and shaded lawns have charms that are attracting picnic

parties. Lodges are holding their annual events in this convenient park. Many groups bring their basket lunches and stay to enjoy riding the roller coaster, circle swing and carry-us-all. There is bowling, skating and free moving pictures. The grand prize waitz held last Tuesday was most successful and a similar event will be announced in the near future.

Miss Mary Dodge, a singing comedienne of more than ordinary ability, who in the course of her act makes several lightning changes, will head the bill at the Aldrome for the week commencing tonight. In addition to Miss Dodge, Miss Alma Huntley, who has sang herself into popularity, will render the latest songs with the illustrated slides. The Cottrell sisters will furnish the music and there will be four new reels of motion picture films every night.

Persistent Advertising is the Road to Big Returns.

OVERLAND 1913 CAR  
REACHES THIS MARKET

Overland 1913 models are now on the market fresh from the Willys-Overland factory at Toledo and dealers in all parts of the country expect to be kept busy within the next three weeks supplying the early demand.

The new car is equipped with a self-starter, mohair top and boot, Warner speedometer, windshield, prestolite tank, five black and nickel lamps, tire-levers, robe rail, foot rest and tool kit. The wheel base is 110 inches and affords ample leg room in both seats. The three-quarter floating rear axle is another important feature.

WILL SING WITH BAND AT LAKE  
MANAWA THIS WEEK.



MISS JOSEPHINE DUNFEE.

## THE FAMOUS

**PATRICK CONWAY'S BAND** of New York....

40 ARTISTS

With Miss Josephine Dunfee Soprano

—AT—

**Lake Manawa**

TODAY, AUG. 18th

and the Next Five Days

Commencing with a Matinee today. Concerts will be given each afternoon and evening, as follows—

2:30 to 3:30, 4:30 to 5:30, 8 to 9 and 10 to 11

Farewell Concerts Friday Evening

The Greatest Band that has visited this part of the country for years. In the class with SOUSA'S and ELLERY'S.

**DON'T FAIL TO HEAR IT****KRUG THEATRE**

THEY'RE OFF FOR THE SEASON

Matinee Today 2:30—Tonight 8:30

BEST SEATS 50c

**Real Burlesque**  
**JARDIN DE PARIS GIRLS**

THE PICK OF THE BEAUTY CROP

Ladies' Daily Dime Matinee all Season

**Krug Park**

Omaha's Finest Amusement

Resort.

Dancing Every Evening to

Huster's Orchestra.

Old Red Mill, Dip-the-Dip

Penny Arcade, Merry-Go-Round

Billiard Parlor,

and Many Other Attractions.

Moving Pictures Every

Evening—Free.

Marquet's Club of Benson

Picnic Saturday, August 24.

**COURTLAND BEACH**

Dancing Every Evening

to Lamp's Orchestra.

Bathing, Boating, Fishing.

Big Roller Coaster.

Carry-Us-All, Roller Rink,

Fowling Alleys, Etc.

Free Moving Pictures Every

Evening.

**EAGLES' PICNIC**

Saturday, August 24.

**Orpheum**

Phones Doug. 404, Ind. A-1494.

Advanced Vaudeville

Opens Sunday

August 25

Tickets On Sale

Tuesday August 20

**BRANDEIS THEATRE**

4 DAYS, COM. NEXT SUNDAY

REGULAR MATINEES.

THE POPULAR COMEDIAN

DAVE LEWIS

In the Landslide of Fun

"Don't Lie to Your Wife"

A Girls Song Farce.

Starts Wednesday.

**RIVER EXCURSIONS**

TO FLORENCE AND RETURN

Boat Leaves Dock Foot

of Douglas Street at

2:30 P. M. and 8:30 P. M.

Returning at 5:30 P. M.

and 11:30 P. M.

Dancing Free—Round Trip 25c

**AIRDOME**

Farnam and Twenty-fifth Sts.

Vaudeville and Pictures.

Adults 10c Children 5c.

**Base Ball**

OMAHA vs. TOPEKA

Rourke Park

Aug. 16, 17, 18, 19.

Saturday, Aug. 17, 2 games, 1st. 2 p. m.

Sunday, Aug. 18, 2 games, 1st. 2 p. m.

Monday, Aug. 19, Ladies' Day.

Games Called 3:30.

Telephone  
Your Want-Ad  
Tyler 1000