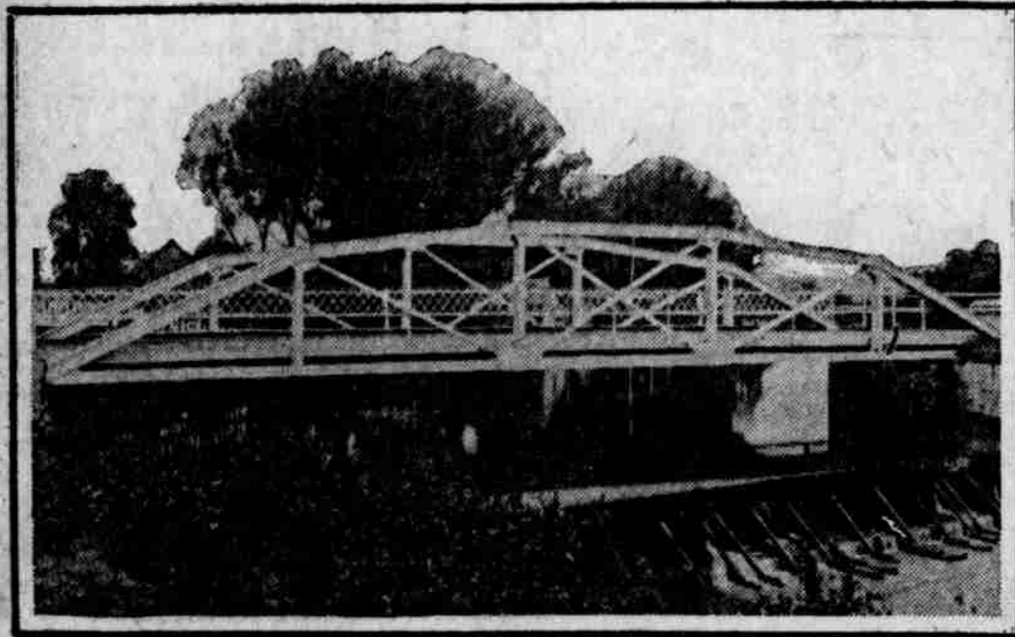
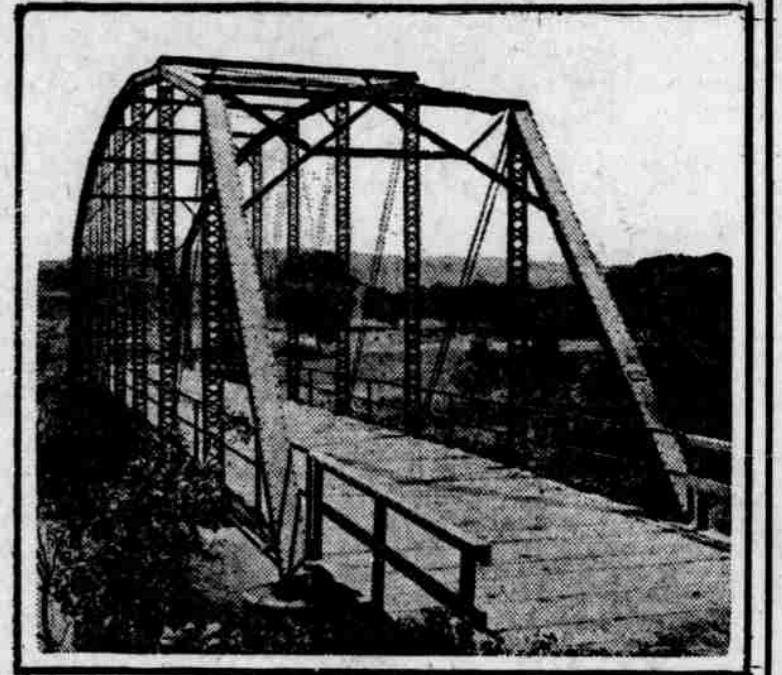


Good Bridges Are Always Indispensable to Good Roads

A 90' LOW TRUSS STEEL SPAN ON CONCRETE ABUTMENTS, WITH CONCRETE FLOOR, OVER THE NORTH FORK RIVER IN THE CITY OF NORFOLK, NEB.



A 60' LOW TRUSS STEEL SPAN ON CONCRETE ABUTMENTS, CONCRETE FLOOR AND SIDE-WALK, IN CENTRAL CITY, NEB.

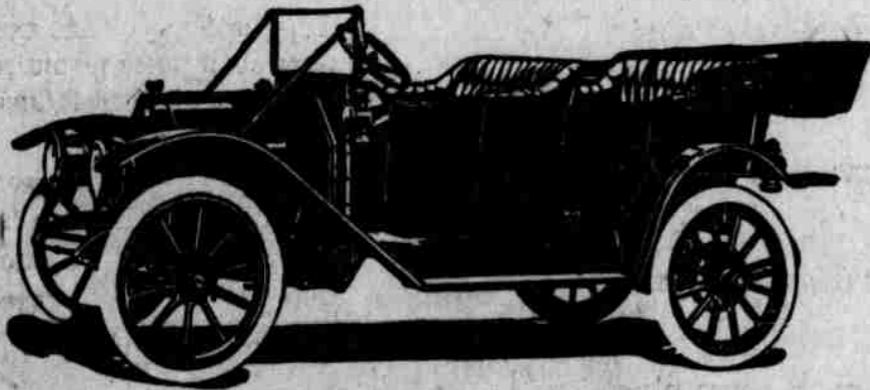


A 160' HIGH TRUSS STEEL SPAN ON STEEL TUBES OVER THE VERDIGRE RIVER NEAR NIOBRARA, NEB.

THE BRIDGES SHOWN IN THESE PHOTOGRAPHS WERE BUILT BY
WESTERN BRIDGE AND CONSTRUCTION CO.

Velie

113-inch wheel base. 34x3 1/2 tires.



3 3/4 x 5 1/2 Cylinders. 32 Horse Power.

A Year Ahead--\$1350 Equipped

THE Velie Motor Vehicle Company announces its latest product, the Velie 32. It fulfills the long and urgent request of Velie friends, owners and dealers for a popular priced car embodying the careful workmanship and better design that for years have been an integral part of the Velie 40 models. It offers more than the purchaser has heretofore been accustomed to expect in a car of its price, and its advanced construction is such that it can not be judged by the popular priced standards of the present day. As in other Velie models, it is at least a year ahead of all competitive cars.

General Specifications

Motor 3 3/4-in bore, 5 1/2-in. stroke; 32 h. p. at 1,000 revolutions per minute; cylinders cast en bloc.

Wheel base, 113 inches; tread, 56 inches. Tires, 34-in. x 3 1/2-in., on Baker demountable rims.

Clutch

Large cone, faced with Raybestos, operating in oil bath.

Transmission

Brown-Lipe, three-speed selective, on annular ball bearings.

Axles

Front, I-beam section, drop forged from one piece of nickel steel. Rear axle, floating type with extra strong housing.

Drive

Propeller shaft fitted with double Spicer universal joints and supported by heavy, pressed steel torque arm with double spring buffers.

Pump and Cam Shaft Drives

No gears are used—in their place the more advanced construction employing silent chains.

Motor Cooling

Flat tubular radiator and thermosiphon system.

Upholstering

Best grade No. 1 Machine buffed leather over deep springs.

Gasoline Supply

Gasoline feed by gravity from sixteen gallon gasoline tank under front seat.

Call and see the largest and best equipped garage and salesroom in the west

JOHN DEERE PLOW COMPANY

Phone Douglas 1899. 10th and Howard Sts. Omaha, Nebraska.

Standard Bridge Co., Omaha, Nebraska

STEEL ——— STEEL ——— STEEL

DO YOU KNOW

That We Have the Largest Modern Steel Plant in the West?
We Carry in Stock Over 4,000 Tons of Beams, Channels, Angles, Plates, Tank-Sheets and Reinforcing Rods.

PROMPT DELIVERY OUR SPECIALTY

Let Us Figure With You on Steel for Buildings, Bridges, Water Towers, Tanks, Fire Escapes, Etc.

OMAHA STRUCTURAL STEEL WORKS, OMAHA, NEB.