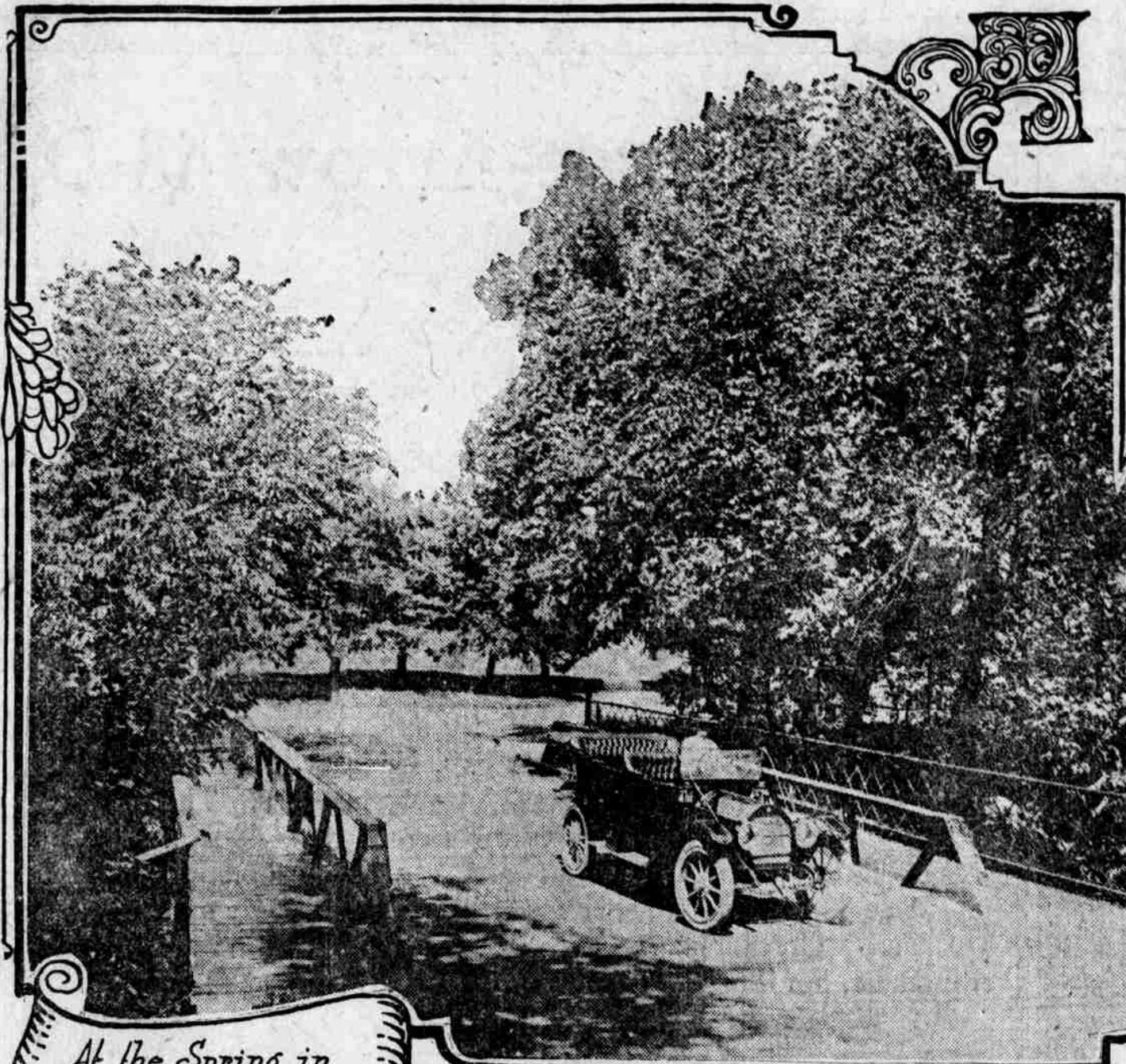
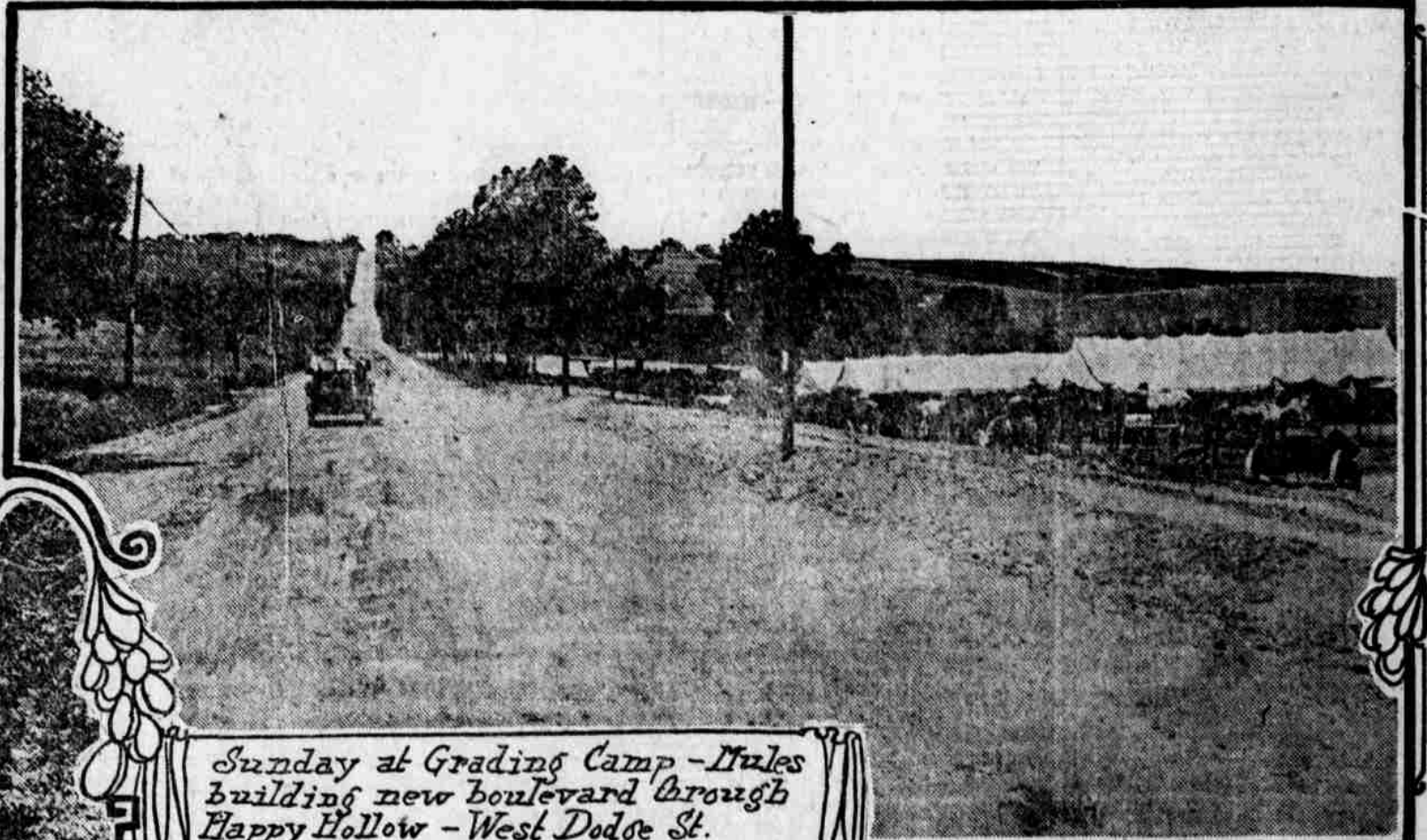


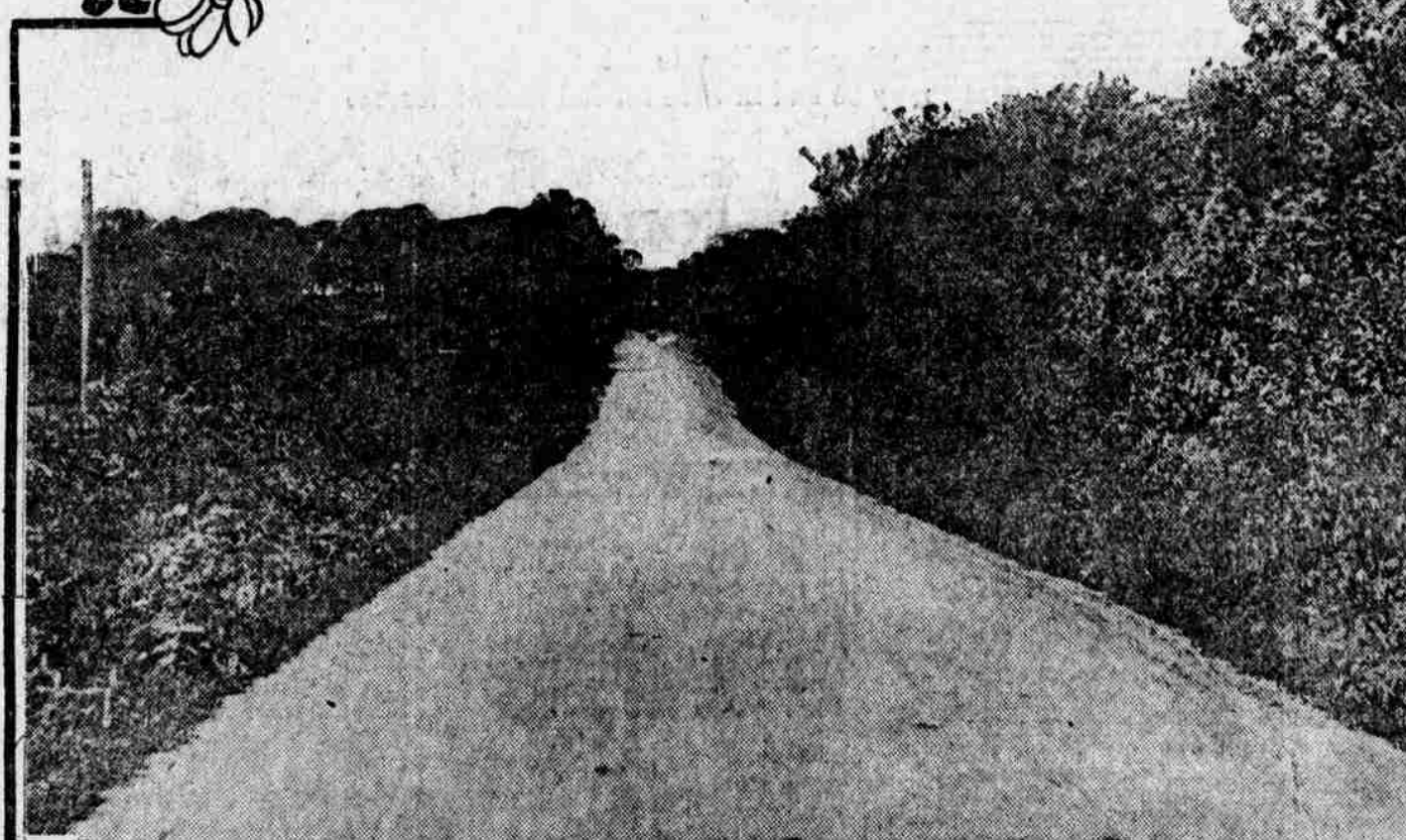
Omaha the Center of a Great Good Roads System



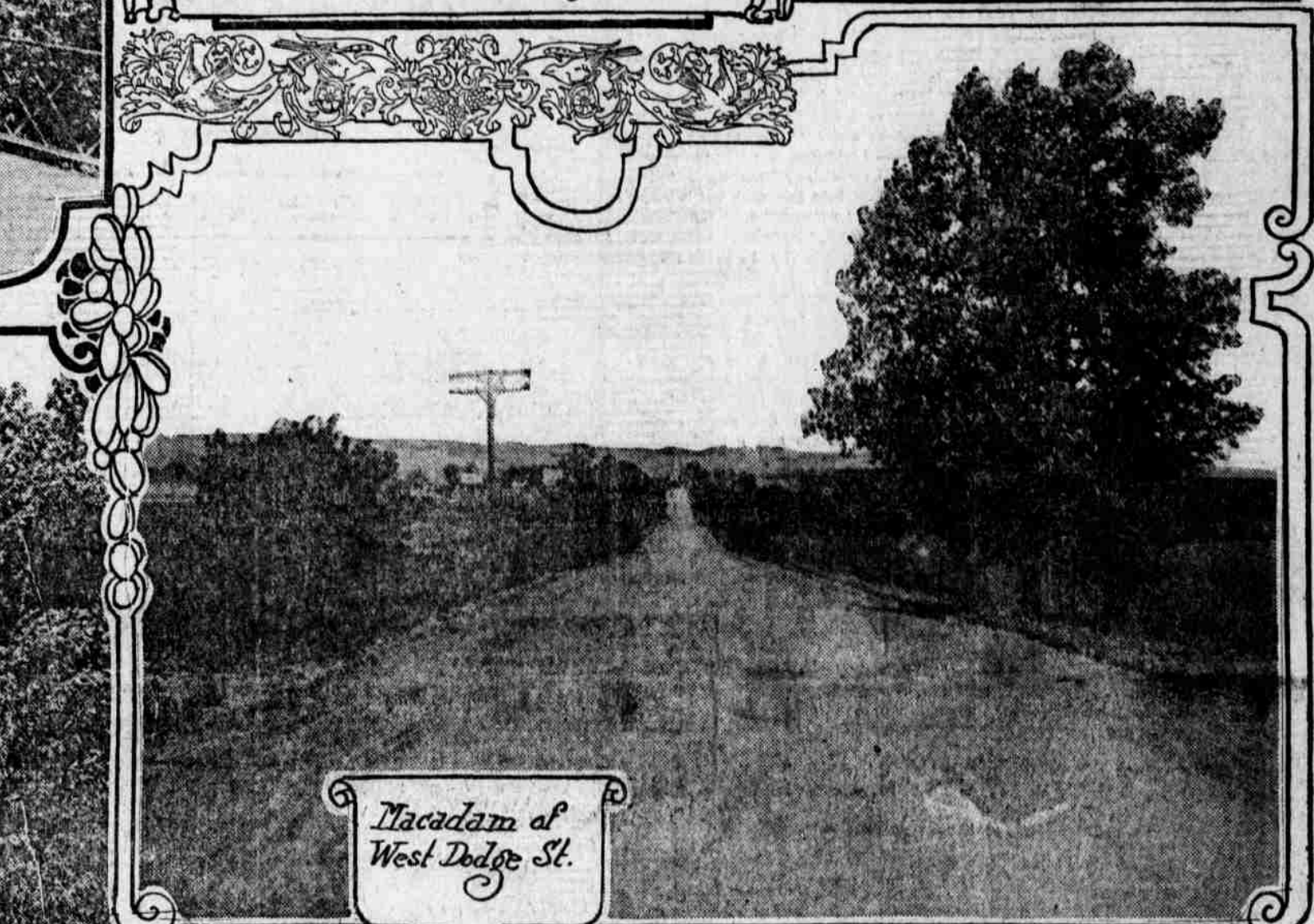
*At the Spring in
Elmwood Park*



*Sunday at Grading Camp - Mules
building new boulevard through
Happy Hollow - West Dodge St.*



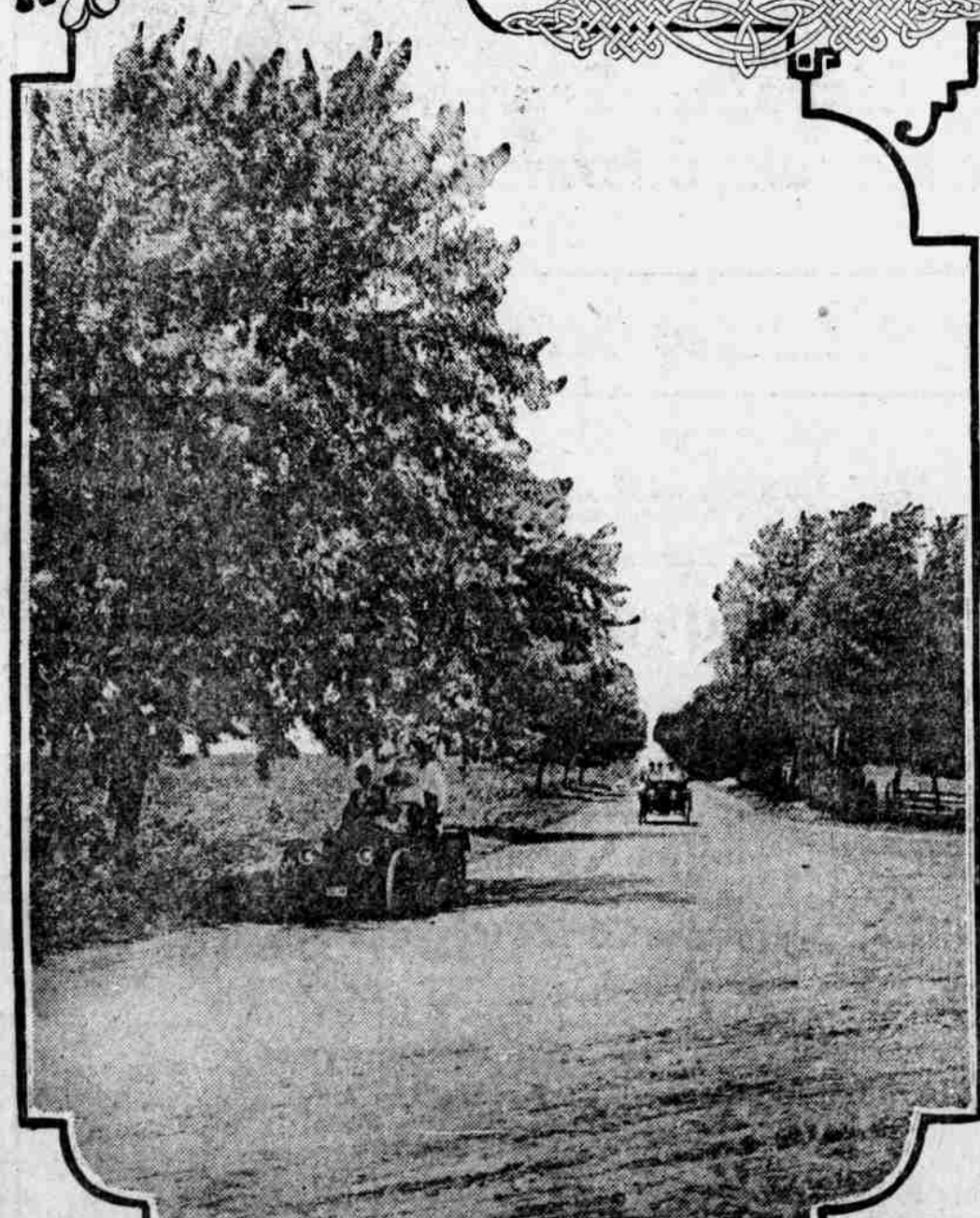
*Beauty Spot on Center Street
Road to Millard.*



*Macadam of
West Dodge St.*



*West Leavenworth St. - Well
kept dirt road - straight away
drive from Elmwood to Elkhorn river.*



*Former racing course on west Dodge - looking
west from Little Pappio*

Beautiful Drives and Perfect Roads Converge at Omaha

AUTOISTS who go motoring in and about Omaha these warm summer evenings are probably without knowledge of the fact that they are tooling over a section of Nebraska that has more improved rural roads than any other county in this state, and that it ranks high in this regard among the counties of any state in the union. Here and there the motor car may run into a bad stretch of road—a part of the highway which is slated for improvement, but which has not yet received the attention of the county authorities, because these men have been busy expending money in repairing and modeling other divisions of that particular road or in getting other highways in various parts of the county in shape for perfect travel.

Taken together with the roads in and about Council Bluffs, the improved highways in Douglas county afford what is probably the largest amount of excellent travel ground for farmers and motorists in this section of the west. Pottawattamie county, Iowa, has no paved roads, but the commissioners there have dragged, graded and turned the highways in much better manner than it has been possible to do in Douglas county, and for this reason the country roads of that county are very good, even though none of them have been improved through paving.

Bare figures probably will not impress the average man with the great amount of good roads there is in and about Omaha, but to give an illustration of one or two of the long stretches which may be traveled in this community will, without doubt, prove to the most sluggish mind the highway advantage of Douglas county and its neighbors.

Less than three miles this side of Elkhorn the famous Dodge road begins its course of brick and macadam. From this point the Dodge highway runs into the western limits of the city of Omaha. A motorist could begin his trip at the western limit of the Dodge road, then (though he might go to Elkhorn, and even on to Fremont, and still be traveling on a well-dragged highway, marked by sign posts and as thoroughly well kept as any highway in the whole state outside of Douglas county), and drive into Omaha, coursing through the city, crossing the Missouri river into Council Bluffs, where he would strike Broadway—a paved road at the western limits of the city—continuing his trip through Council Bluffs and driving out to Lake Manawa, the

(Continued on Page Four.)



Ardle Corner on West Dodge - Peoria Farm on right