

Premier Vacuum Cleaners

The only sanitary way to clean house. Price \$36.00. Cleaners rented also. Look at this list of house cleaning helps.

Paint, any color, any size, from a 15 cent can to a gallon at \$1.85.

Jap-a-lac in cans from 15c up.

Varnish in cans from 15c up.

Paint brushes from 5c up.

Mops, Mop Wringers, Mop Buckets, Brooms, Carpet Sweepers, Step Ladders, Floor wax, floor brushes, etc.

After house cleaning buy an Acorn Gas Stove and an Alaska Refrigerator.

John Hussie Hardware Co.

2107-09 Cuming St. "If you buy it of Hussie it's right."

BOND YOUR CONTRACTOR in a Home Company

It insures satisfactory completion of work according to contract.

NATIONAL FIDELITY & CASUALTY CO.

NATIONAL FIDELITY & CASUALTY BLDG.

Are You Going to Paint Your House this Spring?

Or any article around the home? If so, we have paint for all purposes and all size packages, the right amount for each job.

- LOWE BROS. MAKE STANDARD LIQUID PAINT.**
(Made in fifty-two tints and shades, and white and black.)
- 1 gallon Lowe Bros. High Standard Paint \$2.00
 - 1 gallon Lowe Bros. High Standard Paint \$1.50
 - 1 quart Lowe Bros. High Standard Paint \$50c
 - 1 pint Lowe Bros. High Standard Paint \$30c
 - 1/2 pint Lowe Bros. High Standard Paint \$20c
- Send or call color. Halftone.
- We recommend Lowe Brothers High Standard Paints to be the best that money can buy.
- LOWE BROS. MAKE STORE.**
Flat colors for interior walls, woodwork, etc. Ready for use. Permanent, washable, practical. Gives a flat, compact, complete coat, in colors, with artistic effect.
- 1 gallon Lowe Bros. Store Paint \$2.00
 - 1 quart Lowe Bros. Store Paint \$50c
 - 1 pint Lowe Bros. Store Paint \$30c
- LOWE BROS. MAKE VERMICO WHITE ENAMEL.**
For enameling woodwork, bath tubs, etc.
- 1 gallon Vermico, Enamel White \$2.50
 - 1 quart Vermico, Enamel White \$60c
 - 1 pint Vermico, Enamel White \$40c
- LOWE BROS. MAKE FLOOR PAINT.**
Hard drying, quick drying. A varnish paint, handsome, durable, tough wearing. Two colors to select from.
- 1 gallon Lowe Bros. Floor Paint \$1.75
 - 1 quart Lowe Bros. Floor Paint \$45c
 - 1 pint Lowe Bros. Floor Paint \$30c
- LOWE BROS. MAKE CARRIAGE GLOSS PAINT.**
One coat will give a hard surface with perfect gloss requiring no varnish for finish. It can be applied by anyone who will take reasonable care and follow directions. The greater the care, the better the results. It is the most economical.
- 1 gallon Lowe Bros. Carriage Gloss Paint \$2.50
 - 1 quart Lowe Bros. Carriage Gloss Paint \$60c
 - 1 pint Lowe Bros. Carriage Gloss Paint \$40c
- LOWE BROS. MAKE SCREEN PAINT.**
For wire cloth, window and door screens, etc. Flows easily from the brush and will not clog the meshes.
- 1 quart Lowe Bros. Screen Paint \$50c
 - 1 pint Lowe Bros. Screen Paint \$30c
- PRESTON'S FAST COLOR PAINT.**
A new one just added to our stock this year. We have found it necessary to add to our stock a more moderate priced paint and one that we could guarantee to give satisfaction.
- 1 gallon Preston's Fast Color Paint \$1.80
 - 1 quart Preston's Fast Color Paint \$45c
 - 1 pint Preston's Fast Color Paint \$30c
- JORDAN'S PERFECTION WAX OIL POLISH.**
Has an established reputation, and is used in thousands of the finest houses, clubs, hotels and establishments in Omaha.
- 1 gallon Jordan's Wax Oil Polish \$2.00
 - 1 quart Jordan's Wax Oil Polish \$50c
 - 1 pint Jordan's Wax Oil Polish \$30c
- We sell many articles you will need this spring for beautifying the home when housecleaning time comes. We suggest the following:
- Myer's Bride Floor Wax, 1 pound 45c; 2 pounds 90c; 4 lbs. 1.80
 - Johnson's Floor Wax, 1 pound 45c; 2 pounds 90c; 4 lbs. 1.80
 - 16-lb. Weighted Floor Brushes for waxing floors \$2.50
 - 16-lb. Weighted Floor Brushes for waxing floors \$1.50
 - Feather Duster \$1.00 to \$2.00
 - Chamois Skin \$1.00 to \$1.50
 - Sponges 10c to \$1.00
 - Paint Brushes, over one thousand kinds to select from ranging in price from 10c to \$5.00
- VARNISH**
We are exclusive Omaha agents for the Murphy Varnish Co., Chicago Varnish Company, Valentine & Company, Lowe Bros. & Co. We are in a position to furnish you Varnish in small or large quantity, for all purposes, and at prices in keeping with quality.
- We would appreciate a visit to our Paint Department, 1415 Harney street, where we will take pleasure in quoting you on the following:
- All brands of White Lead, including Hammer, Southern and Carter, Boided and Raw Oil, Turpentine, Window Glass, Lowe Bros. Mixed Paint, Preston's Fast Color Paint, Paint Brushes, and many other articles too numerous to mention.
- You can get these prices and articles at our Drug Store, 14th and Farnam streets, in a small way or at our Paint Department, 1415 Harney street.

MYERS-DILLON DRUG CO.

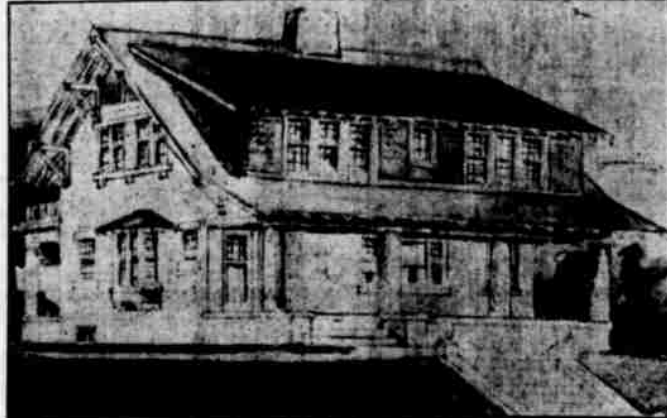
Wholesale and Retail, 1415 Harney St. Retail, 14th and Farnam Sts.

THE HOME BUILDERS PAGE

Room Connections Important Item

By Arthur C. Clausen.

ONE of the small important details which must be considered in the planning of every house is the relation that each room bears to other rooms and how it shall be connected with them. Starting with the reception hall, it used to be considered the proper thing to have the openings between the hall and all rooms as small as possible and kept closed most of the time, especially in winter, for which there were two reasons advanced. One was that they did not consider it in those days good taste to expose the interior of a house to a visitor who may have simply called on a business errand; the second, and only real good reason, was the fact that heating plants were not as efficient as they are today, and little attempt was made to heat the second story. The stair hall being openly connected with the second story, it was necessary to conserve the heat by closing off the hall. All of this is changed.



MR. CLAUSEN'S BOOK

"The Art, Science and Sentiment of Homebuilding."

Thirty chapters, 300 illustrations. It covers a wide range of subjects including the planning of bungalows, suburban and city houses, costing from \$2,000 to \$20,000, letting contracts, choosing materials, proper design of entrance, windows, fireplaces, etc. New third edition. Price, postpaid, \$1.00.

Address: Arthur C. Clausen, Architect, 1136-27-28 Lumber Exchange, Minneapolis, Minnesota.

Today, as one enters a home, practically all of the first floor is seen at a glance, except the kitchen and pantry. Every attempt is made to let the visitor see as much of the home as possible, with such special features as the sideboard, fireplace, built-in bookcase, etc., being arranged so as to be seen from the front door or at least from one point in the reception hall.

The openings between the reception hall and the living room, or the library, like the openings between the living room and the dining room, or the dining room and the library, as the case may be, are made in various ways, still clinging to the idea that there may be times when it might be desirable to close off the rooms, some people providing sliding doors, and in a few houses they are occasionally used. Once in a great while the sliding door between the dining room and adjoining room is closed off in some homes during the setting of the table, although just why is not easily explained. There is nothing objectionable about anything which goes upon a dining room table, and at meal time, when we are usually hungry, the setting of the dining table is invariably a welcome sight.

When the housecleaning is being done sliding doors are admittedly a convenience, since one room can be cleaned and the dust confined in that room without being scattered, although the vacuum cleaner is fast removing this objection.

Many clients have informed the writer that the only time they pull their sliding doors out is to show the pretty grain in the panels to some one or to dust them. They are expensive features; the extra thickness of the partitions takes up room and their use is not generally advised. For those who wish some sort

of division between the rooms, portiers serve the purpose admirably, although these are dust collectors.

Columned openings are still appropriate in homes of colonial or classic design, but not used as much as in the past because of the change in the general style of our homes. A great many homes nowadays are in the more simple craftsman, mission or bungalow style, in which columns of classic detail would not be appropriate.

Columns extending the full length of the opening from the floor to the head jamb look well only in large openings between very large rooms. They are a little too bold in detail for small rooms. In small rooms it is best to place the columns on pedestals, the pedestals on the line with the window sills and the columns made proportionately smaller. Sometimes a bookcase is placed on each side, taking up part of the casad opening with a very small square column extending from the top of the bookcase to the head of the jamb. This is a craft-

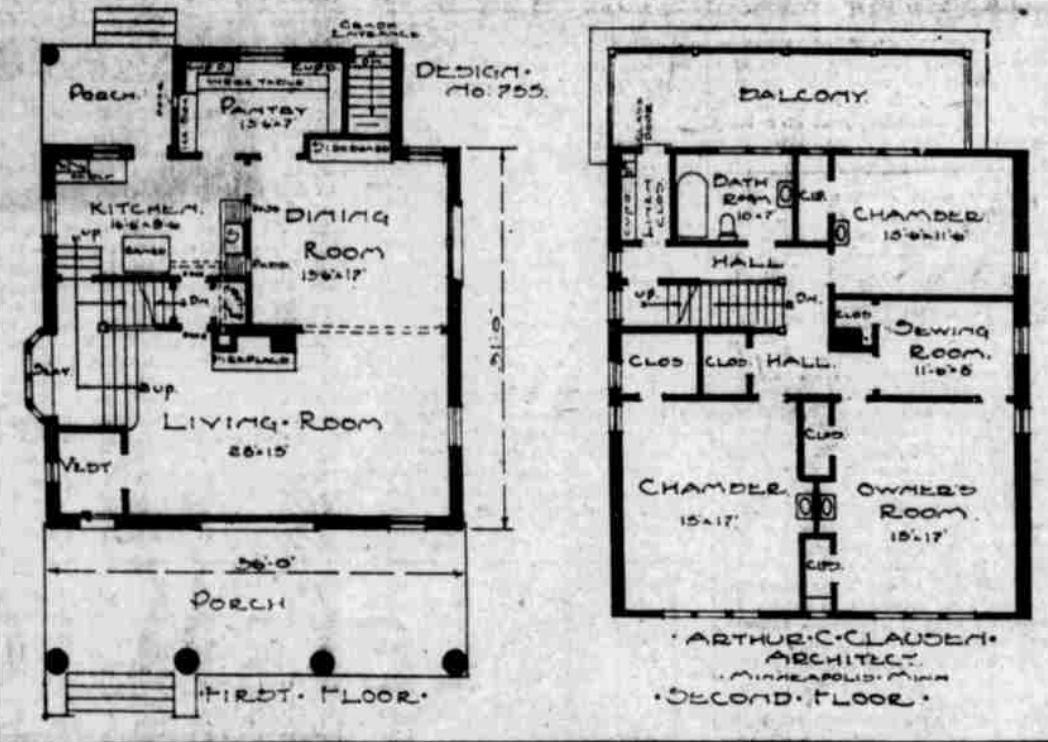
man idea and is useful as well as ornamental.

The simplest opening is, of course, the plain casad opening without sliding doors or columns. All large openings look the best when of greater width than their height, especially when located on the broad side of a long room. When located on the narrow side of a room the casad opening need not be quite so broad.

Whether dining room and living room should be directly connected and whether the dining room should be placed in the front side of a house or the rear side is all a matter of personal preference, but this fact is universal, the larger the opening between rooms, the more compact the arrangement and the less attempt is made to hide anything in a small house of small rooms, the larger the house and the larger the rooms will appear to any one on the inside.

An Auto Collision
means many bad bruises, which Bucklen's Arnica Salve heals quickly, as it does sores, cuts, burns and piles. 25c. For sale by Beaton Drug Co.

It Wouldn't Go.
"I'm afraid," said the venerable minister, "I shall not be able to get up a new sermon for next Sunday. Do you suppose the congregation would notice if I hunted up one that I used, say, fifteen or twenty years ago and gave it again?"
"I'm almost sure," his wife replied, "that it would be noticed."
"Do you think they remember my preaching as well as that?"
"Oh, I don't think they remember what you preach much longer than it takes them to reach the church door; but you would be quickly found out all the same if you attempted to make use of a sermon that you had preached fifteen or twenty years ago. You used to try to scare people by hinting that there was a devil, you know."—Chicago Record-Herald.



Wire Your New House For Extension Telephones

You may not think you will ever need more than one telephone set in the house, but "eventually" you will want at least two extensions.

So, when you ask us to wire your new house, be sure to request wiring for those extensions.

You will want a main set in a convenient location downstairs, an extension to the kitchen and another upstairs, in the bedroom or the hall.

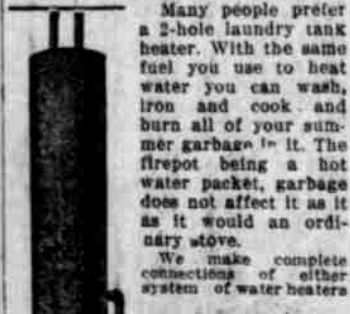
The additional expense of extension sets is trifling—less than 2 cents a day in connection with residence service.

NEBRASKA TELEPHONE CO.

Every Bell Telephone is the Center of the System.

Scalding Hot Water

You will need more hot water from now on than you needed during cold weather. We have two systems of supplying this want. One is a copper coil gas water heater to attach to your pressure boiler. Copper is the greatest of all known heat conductors. A lighted match applied to our copper coil will start a circulation. The cost is only a trifle above the old style cast iron heaters and the saving in fuel is fully 50%.



Many people prefer a 2-hole laundry tank heater. With the same fuel you use to heat water you can wash, iron and cook and burn all of your summer garbage in it. The firepot being a hot water packet, garbage does not affect it as it does a regular ordinary stove.

We make complete connections of other systems of water heaters.

CONCRETE STONE COMPANY BUYS ITS COMPETITOR

The Omaha Concrete Stone company of Twenty-eighth avenue and Sahler street, has just closed a deal whereby it takes over the entire ideal equipment of the Perfection Cement Stone company of Thirtieth and Boyd streets.

The Omaha Concrete Stone company has spent about \$2,000 in the last two months improving and enlarging its plant and now has the largest and most complete equipped cement stone and brick plant in the west.

Messings of an Old Sport.
The booster is ever too blind to see the covert smile.

Anybody can take the line of least resistance, but the winner bucks the head winds!

Don't flinch when the firing party bluffs your eyes—their guns may be loaded with blanks!

We'd as soon have 'em send us up for arson as to hear 'em refer to us as "a good fellow, but irresponsible!"

We're always ready to get a little hot down on the chap who remedies the faults without even saying a word about them!—New York World.

If you have anything to exchange, advertise it in The Bee Want Ad column.

Phone Douglas 353
Residence, Harney 4282

E. J. DAVIS HEAVY HAULING

1818 Farnam Street
Omaha, Nebraska.

LAWN SEED

LAWN DRESSING SHEEP MANURE DON'T PUT BARNYARD MANURE ON YOUR LAWN

WHY?

It contains seeds of Dock, Plantain, Dandelion, Sivel, Shepherds Pursue, ALL NOXIOUS SEEDS. We can help you with intelligent, practical advice about the care of your lawn. Come in and talk it over.

Open Saturday Evening. Seeds That Grow. Need Any?

The Nebraska Seed Co. Phone D. 1261, 1613 Howard St.

Fruit Trees Shade Trees

ROSE BUSHES SMALL FRUITS Large selection of Maple Trees of all grades. Other Shade Trees. Our cool cellar keeps the trees dormant, after digging. You can examine them, root and branch, and see what you are buying. Call or send for catalogue. Save agents' commission.

Benson-Omaha Nursery BENSON, NEB., Dept. A. P. J. FLYNN, Prop.

Anchor Fence Co.

207 N. 17th Street

Now is the time to order Fence. We sell all the popular designs and staples in Iron, Lawn and Garden Fencing at the lowest prices. Order now ahead of the crowd.

Telephone Red 814

7% Guaranteed on Home Builders' Preferred Shares

Shares \$1.00 each. Issued as paid for, in any number desired, weekly or monthly. Interest paid semi-annually; compounded if not withdrawn. Shares resold under guaranty when money invested with interest is wanted. Not a savings bank, yet just as safe, as all money of home builders is secured by mortgages or deeds on new dwellings. Your savings investment solicited. Printed matter, giving full information furnished upon request.

Buy a Home in the New Way

We will build any style house you like on a lot selected by you anywhere in the city and furnish the money you need. You to pay us back almost like rent, or as fast as you desire. The new way is simple, easy and economical. Our free booklet, "The New Way" will interest you.

Home Builders American Security Company

FISCAL AGENTS

309 So. 17th St., Bet. Farnam and Harney, Ground Floor

Both Phones, 3867 OMAHA, NEB.

DON'T FORGET!

We Move May 1st to 1207 HOWARD. Everything Is Marked Down.

ARTISTIC BUILDERS' HARDWARE. LET US FIGURE YOUR PLANS.

Builder Hardware. Contractor Supplies.

PATTON-BOWMAN HARDWARE COMPANY
1615 FARNAM STREET.

Orchard, Vineyard, Field and Barn

And even the hides of your cattle and sheep can be kept free from pest, vermin and disease germs by means of

The Standard Sprag Pump

It will spray the tallest tree in your orchard from the ground. Will spray your vines and potato plants as fast as you can walk. Whitewash poultry houses, disinfect the breeding pens and spray the live stock with sanitary dip.

Solid brass, very light weight, powerful, durable, easy to operate and inexpensive.

Stop at our store and let us give demonstration.

FOR SALE BY

Stewart's Seed Store—119 North 16th Street
Phone Doug. 977—Opposite Postoffice

Standard Electric Company

FOR ALL KINDS OF ELECTRIC SUPPLIES

SEE US

ELECTRIC LIGHT, POWER, WIRING, MOTORS and DYNAMOS

Tel. 3831 319 South Thirteenth St.
Edw. F. Shurig, Mgr.

AWNINGS---CURTAINS

You know how much better your house looks with awnings on it. You should know how much more comfortable it is with them. We have a large assortment to select from and know we can please you both in price and quality.

SCOTT TENT & AWNING COMPANY

314-16 South 12th Street.
HELP US GROW

W. H. THOMAS

Real estate loans in sums of \$1,000 to \$300,000. Borrowers have privilege of paying 10% to 20% of the principal on any interest date. Loans made for building purposes on either business or residence properties, and money advanced as building progresses.

W. H. THOMAS

503 First National Bank Bldg.