

## DEMOCRATS WILL GO TO BALTIMORE

Monument City Captures National Convention of the Opposition Party on Second Ballot.

## ST. LOUIS IS SECOND CHOICE

Victors Put Up Certified Check for Hundred Thousand.

## CALL FOR DELEGATES ISSUED

States May Select Delegates by Primary if They Wish.

## DATE IS SET FOR JUNE 25

This is One Week After Republican Convention Meets in Chicago—Session Will Be Held in Big Armory.

WASHINGTON, Jan. 9.—The democratic national convention will be held in Baltimore, beginning Tuesday, June 25. The choice was made late today by the democratic national committee after a spirited contest and after representatives of Baltimore, St. Louis, Chicago, Denver and New York had presented the claims of those cities.

## St. Louis Faces Water Famine; Brewery Closes

ST. LOUIS, Jan. 9.—August A. Busch, vice president of the Anheuser-Busch Brewing association, announced today that the immense plant will be shut down until the city's water supply is increased.

## Bar Against Joy Riding by High School Pupils

LOS ANGELES, Jan. 9.—High school boys are forbidden to take high school girls automobile riding, and all high school assembly and assembly members are ordered expelled, in edicts issued today by J. H. Francis, superintendent of schools here.

## Blackmailer Given One Year in Jail

KANSAS CITY, Jan. 9.—David Lewis, a house painter, was sentenced to a year in jail and the payment of a \$50 fine here today for an attempt made last fall to blackmail W. S. Webb, vice president of the Missouri Savings bank for \$1,500.

## Bill for Department Store for Federal Clerks

WASHINGTON, Jan. 9.—Representative Victor L. Berger, socialist, of Wisconsin, introduced a bill today to appropriate \$1,000,000 for the establishment of government owned department stores in Washington for the benefit of government clerks to be operated on the lines of the commissary stores in the Panama canal zone.

## The Weather

For Nebraska: Increasing cloudiness with snow; not so cold south portion.  
For Iowa: Increasing cloudiness with probably snow; rising temperature south portion.  
Temperature at Omaha Yesterday:

Hours	Deg.
5 a. m.	20
6 a. m.	20
7 a. m.	20
8 a. m.	20
9 a. m.	20
10 a. m.	20
11 a. m.	20
12 m.	20
1 p. m.	20
2 p. m.	20
3 p. m.	20
4 p. m.	20
5 p. m.	20
6 p. m.	20
7 p. m.	20
8 p. m.	20
9 p. m.	20
10 p. m.	20
11 p. m.	20
12 m.	20

## PHILPOTT ANNOUNCES THE BIRTH OF A SON TUESDAY

A telegram from Moberly, Mo., last night brought word that a son had been born to Mr. and Mrs. Horace H. Philpott of Francis, Tex., who are visiting at Moberly. The message said both mother and son were doing finely but did not give any word as to the "old man's" condition. Mrs. Philpott was connected with the Bee for many years.

## The National Capital

The Senate.  
In session at 2 p. m.

## DECLARES HIS GUILT IN COURT

Changed Plea Accepted and Placed on Records by Judge.

## CLEMENCY WILL BE REQUESTED

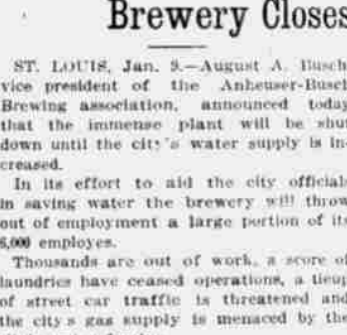
Attorneys Will Attempt to Make Penalty Life Imprisonment.

## MINISTER APPEARS HOPELESS

Responses to Questions of Judge Made in Even Tones Without Evidence of Emotion by Murderer of Sweetheart.

BOSTON, Jan. 9.—With the appearance of a man who had abandoned all hope of life, Clarence V. T. Richeson stood today at the bar of justice, declared his guilt of the premeditated murder of his former sweetheart, Miss Avis Linnell and without a tremor heard Judge Sanderson sentence him to death in the electric chair during the week beginning May 19.

## Waiting Their Turn



## PULP QUESTION UP TO COURT

President Taft Sends Message Regarding Demand from Europe.

## FAVORED NATION CLAUSE ISSUE

Wood from All Countries Except Canada Will Not Be Admitted Free Until After Decision is Made.

## Milligan Farmer Kills Family and Self

MILLIGAN, Neb., Jan. 9.—Some time between noon and 1 o'clock this evening Peter Burt, a middle-aged farmer living here, killed his wife and their three-year-old child and then took his own life.

## Dr. Harry E. Webster Will Plead Guilty

STERLING, Ill., Jan. 9.—John Edwin, chief counsel for Dr. Harry Elgin Webster, continued in the 10th county jail for the murder of Bessie Kent Webster, announced this afternoon that Webster would appear in Circuit court Friday morning and enter a plea of guilty to murder and will throw himself on the mercy of the court.

## Kimmel Case Goes to Trial February 6

ST. LOUIS, Jan. 9.—The Kimmel case will go to trial a third time February 6 in the United States district court. Judge Dyer set that date today.

## TERRITORIAL PIONEERS HOLD ANNUAL SESSION

LINCOLN, Neb., Jan. 9.—(Special Telegram.)—The Territorial Pioneers' association elected the following officers: President, J. H. Culver of Milford; first vice president, Marshall DeCamp, Clearwater; second vice president, C. A. Beach, Lincoln.

## CUBA MAY PROHIBIT EXPORT OF SUGAR CANE

WASHINGTON, Jan. 9.—Apparently in an effort to protect the sugar refining industry of Cuba a bill was introduced in the Cuban senate yesterday, prohibiting the exportation of sugar cane in any form, according to advices received at the State department today.

## RICHESON GIVEN DEATH SENTENCE

Confessed Murderer of Avis Linnell Condemned to Die in Electric Chair.

## DECLARES HIS GUILT IN COURT

Changed Plea Accepted and Placed on Records by Judge.

## CLEMENCY WILL BE REQUESTED

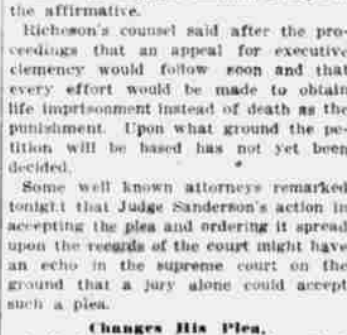
Attorneys Will Attempt to Make Penalty Life Imprisonment.

## MINISTER APPEARS HOPELESS

Responses to Questions of Judge Made in Even Tones Without Evidence of Emotion by Murderer of Sweetheart.

BOSTON, Jan. 9.—With the appearance of a man who had abandoned all hope of life, Clarence V. T. Richeson stood today at the bar of justice, declared his guilt of the premeditated murder of his former sweetheart, Miss Avis Linnell and without a tremor heard Judge Sanderson sentence him to death in the electric chair during the week beginning May 19.

## Waiting Their Turn



## PULP QUESTION UP TO COURT

President Taft Sends Message Regarding Demand from Europe.

## FAVORED NATION CLAUSE ISSUE

Wood from All Countries Except Canada Will Not Be Admitted Free Until After Decision is Made.

## Milligan Farmer Kills Family and Self

MILLIGAN, Neb., Jan. 9.—Some time between noon and 1 o'clock this evening Peter Burt, a middle-aged farmer living here, killed his wife and their three-year-old child and then took his own life.

## Dr. Harry E. Webster Will Plead Guilty

STERLING, Ill., Jan. 9.—John Edwin, chief counsel for Dr. Harry Elgin Webster, continued in the 10th county jail for the murder of Bessie Kent Webster, announced this afternoon that Webster would appear in Circuit court Friday morning and enter a plea of guilty to murder and will throw himself on the mercy of the court.

## Kimmel Case Goes to Trial February 6

ST. LOUIS, Jan. 9.—The Kimmel case will go to trial a third time February 6 in the United States district court. Judge Dyer set that date today.

## TERRITORIAL PIONEERS HOLD ANNUAL SESSION

LINCOLN, Neb., Jan. 9.—(Special Telegram.)—The Territorial Pioneers' association elected the following officers: President, J. H. Culver of Milford; first vice president, Marshall DeCamp, Clearwater; second vice president, C. A. Beach, Lincoln.

## CUBA MAY PROHIBIT EXPORT OF SUGAR CANE

WASHINGTON, Jan. 9.—Apparently in an effort to protect the sugar refining industry of Cuba a bill was introduced in the Cuban senate yesterday, prohibiting the exportation of sugar cane in any form, according to advices received at the State department today.

## Waiting Their Turn



## PULP QUESTION UP TO COURT

President Taft Sends Message Regarding Demand from Europe.

## FAVORED NATION CLAUSE ISSUE

Wood from All Countries Except Canada Will Not Be Admitted Free Until After Decision is Made.

## Milligan Farmer Kills Family and Self

MILLIGAN, Neb., Jan. 9.—Some time between noon and 1 o'clock this evening Peter Burt, a middle-aged farmer living here, killed his wife and their three-year-old child and then took his own life.

## Dr. Harry E. Webster Will Plead Guilty

STERLING, Ill., Jan. 9.—John Edwin, chief counsel for Dr. Harry Elgin Webster, continued in the 10th county jail for the murder of Bessie Kent Webster, announced this afternoon that Webster would appear in Circuit court Friday morning and enter a plea of guilty to murder and will throw himself on the mercy of the court.

## Kimmel Case Goes to Trial February 6

ST. LOUIS, Jan. 9.—The Kimmel case will go to trial a third time February 6 in the United States district court. Judge Dyer set that date today.

## TERRITORIAL PIONEERS HOLD ANNUAL SESSION

LINCOLN, Neb., Jan. 9.—(Special Telegram.)—The Territorial Pioneers' association elected the following officers: President, J. H. Culver of Milford; first vice president, Marshall DeCamp, Clearwater; second vice president, C. A. Beach, Lincoln.

## CUBA MAY PROHIBIT EXPORT OF SUGAR CANE

WASHINGTON, Jan. 9.—Apparently in an effort to protect the sugar refining industry of Cuba a bill was introduced in the Cuban senate yesterday, prohibiting the exportation of sugar cane in any form, according to advices received at the State department today.

## Waiting Their Turn



## PULP QUESTION UP TO COURT

President Taft Sends Message Regarding Demand from Europe.

## FAVORED NATION CLAUSE ISSUE

Wood from All Countries Except Canada Will Not Be Admitted Free Until After Decision is Made.

## Milligan Farmer Kills Family and Self

MILLIGAN, Neb., Jan. 9.—Some time between noon and 1 o'clock this evening Peter Burt, a middle-aged farmer living here, killed his wife and their three-year-old child and then took his own life.

## Dr. Harry E. Webster Will Plead Guilty

STERLING, Ill., Jan. 9.—John Edwin, chief counsel for Dr. Harry Elgin Webster, continued in the 10th county jail for the murder of Bessie Kent Webster, announced this afternoon that Webster would appear in Circuit court Friday morning and enter a plea of guilty to murder and will throw himself on the mercy of the court.

## Kimmel Case Goes to Trial February 6

ST. LOUIS, Jan. 9.—The Kimmel case will go to trial a third time February 6 in the United States district court. Judge Dyer set that date today.

## TERRITORIAL PIONEERS HOLD ANNUAL SESSION

LINCOLN, Neb., Jan. 9.—(Special Telegram.)—The Territorial Pioneers' association elected the following officers: President, J. H. Culver of Milford; first vice president, Marshall DeCamp, Clearwater; second vice president, C. A. Beach, Lincoln.

## CUBA MAY PROHIBIT EXPORT OF SUGAR CANE

WASHINGTON, Jan. 9.—Apparently in an effort to protect the sugar refining industry of Cuba a bill was introduced in the Cuban senate yesterday, prohibiting the exportation of sugar cane in any form, according to advices received at the State department today.

## Waiting Their Turn



## PULP QUESTION UP TO COURT

President Taft Sends Message Regarding Demand from Europe.

## FAVORED NATION CLAUSE ISSUE

Wood from All Countries Except Canada Will Not Be Admitted Free Until After Decision is Made.

## Milligan Farmer Kills Family and Self

MILLIGAN, Neb., Jan. 9.—Some time between noon and 1 o'clock this evening Peter Burt, a middle-aged farmer living here, killed his wife and their three-year-old child and then took his own life.

## Dr. Harry E. Webster Will Plead Guilty

STERLING, Ill., Jan. 9.—John Edwin, chief counsel for Dr. Harry Elgin Webster, continued in the 10th county jail for the murder of Bessie Kent Webster, announced this afternoon that Webster would appear in Circuit court Friday morning and enter a plea of guilty to murder and will throw himself on the mercy of the court.

## Kimmel Case Goes to Trial February 6

ST. LOUIS, Jan. 9.—The Kimmel case will go to trial a third time February 6 in the United States district court. Judge Dyer set that date today.

## TERRITORIAL PIONEERS HOLD ANNUAL SESSION

LINCOLN, Neb., Jan. 9.—(Special Telegram.)—The Territorial Pioneers' association elected the following officers: President, J. H. Culver of Milford; first vice president, Marshall DeCamp, Clearwater; second vice president, C. A. Beach, Lincoln.

## CUBA MAY PROHIBIT EXPORT OF SUGAR CANE

WASHINGTON, Jan. 9.—Apparently in an effort to protect the sugar refining industry of Cuba a bill was introduced in the Cuban senate yesterday, prohibiting the exportation of sugar cane in any form, according to advices received at the State department today.

## EQUITABLE LIFE BUILDING BURNS

Big Marble Structure in Heart of New York Financial District Destroyed by Fire.

## LOSS IS TEN MILLION DOLLARS

Four Men Killed by Jumping and Other Bodies Are Under Debris.

## BUSINESS IS NEARLY SUSPENDED

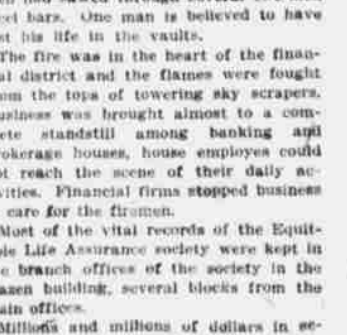
Operations of Stock Exchange and Clearing House Hindered.

## KOUNTZE BROS. BURNED OUT

Eastern House of Omaha and Denver Firm Had Quarters in Building—Hundreds of Millions of Securities Said to Be Safe.

NEW YORK, Jan. 9.—The great marble nine-story building of the Equitable Life Assurance society at 129 Broadway, the home of the Mercantile Trust company, the Equitable Trust company, the banking house of Kountze Bros., the Mercantile Safe Deposit company and the Harriman lines, was destroyed early today by fire. Four men lost their lives by leaping from the roof and the property loss is conservatively estimated at \$10,000,000.

## Waiting Their Turn



## PULP QUESTION UP TO COURT

President Taft Sends Message Regarding Demand from Europe.

## FAVORED NATION CLAUSE ISSUE

Wood from All Countries Except Canada Will Not Be Admitted Free Until After Decision is Made.

## Milligan Farmer Kills Family and Self

MILLIGAN, Neb., Jan. 9.—Some time between noon and 1 o'clock this evening Peter Burt, a middle-aged farmer living here, killed his wife and their three-year-old child and then took his own life.

## Dr. Harry E. Webster Will Plead Guilty

STERLING, Ill., Jan. 9.—John Edwin, chief counsel for Dr. Harry Elgin Webster, continued in the 10th county jail for the murder of Bessie Kent Webster, announced this afternoon that Webster would appear in Circuit court Friday morning and enter a plea of guilty to murder and will throw himself on the mercy of the court.

## Kimmel Case Goes to Trial February 6

ST. LOUIS, Jan. 9.—The Kimmel case will go to trial a third time February 6 in the United States district court. Judge Dyer set that date today.

## TERRITORIAL PIONEERS HOLD ANNUAL SESSION

LINCOLN, Neb., Jan. 9.—(Special Telegram.)—The Territorial Pioneers' association elected the following officers: President, J. H. Culver of Milford; first vice president, Marshall DeCamp, Clearwater; second vice president, C. A. Beach, Lincoln.

## CUBA MAY PROHIBIT EXPORT OF SUGAR CANE

WASHINGTON, Jan. 9.—Apparently in an effort to protect the sugar refining industry of Cuba a bill was introduced in the Cuban senate yesterday, prohibiting the exportation of sugar cane in any form, according to advices received at the State department today.

## PHONE MERGER RATIFIED

Stockholders of Lincoln Telephone Company Hold Meeting.

## FRANK WOODS IS RE-ELECTED

County Judge Lewis of Red Willow County Overrules Decision of Attorney General as to Custody of Assessors' Bonds.

## WILEY ADVISES PEOPLE TO EAT YELLOW SUGAR

WASHINGTON, Jan. 9.—Dr. H. W. Wiley, the government food guardian, is getting thin skinned. He admitted it today to the house committee which is trying to fix the responsibility for last summer's high prices of sugar.

## SALT LAKE MAN FINDS THE BEE GOOD COMPANION

Returning from a two years' trip abroad, C. C. Brown of Salt Lake City and Ogden has been visiting with Tom Coleman of the Midland Glass and Paint company, and tells of his pleasant surprise in finding The Bee at a bookseller's in Sheffield, England.

## UNITED STATES WILL SEND BATTALION TO CHINA

WASHINGTON, Jan. 9.—A battalion of infantry, consisting of 500 men, will be sent by the United States to China to help keep open railway communication between Peking and the sea. This force is all that is required, in the opinion of Minister Calhoun, after consultation with other diplomatic officers in Peking.

## Boxes of O'Brien's Candy and Dalzell's Ice Cream Bricks

Given away each day in the want ads to those finding their names.

Read the want ads each day, if you don't get a prize you will probably find something advertised that appeals to you.

Each day these prizes are offered, no puzzles to solve—no subscriptions to get—nothing but finding your name. It will appear some time.