

REAL ESTATE FARM & RANCH LAND FOR SALE... You Can Secure A Home in the Famous San Joaquin Valley The Richest Valley in California

One man has just refused an advance of \$20 an acre. He has had his farm less than six weeks. The land will increase in value with jumps and bounds before the Panama-Pacific exposition at San Francisco.

REAL ESTATE FARM & RANCH LAND FOR SALE... 320 ACRES FREE. Your homestead right good for 320 acres, and no residence required.

Western Opportunities. Utah lands are being filed upon more rapidly than lands in any other state.

Miscellaneous. WILL sacrifice 80-acre. Rusks county, Wis., farm near school, markets; good buildings; level clay soil.

WANTED-TO BUY. 20-hand goods, Kleser, 1200 Center, D. 582. FURS Shames Fur Co., 120 N. 16th, Omaha.

WANTED-TO RENT. WANTED-Houses and flats to rent. Have more customers than we can supply.

WANTED-Furnished suite near good boarding place, suitable for family of three adults and child.

WINTER RESORTS. "MOST delightful winter climate in America" pine belt of South Alabama.

WANTED-SITUATIONS. PRACTICAL nurse. Call H 6616, A-371. MAN wants position taking care of furnace for room and board.

GOVERNMENT NOTICES. FORT LOGAN, COLORADO, NOVEMBER 20, 1911-Sealed proposals in triplicate will be received here until 10:10 a. m.

LEGAL NOTICES. NOTICE TO CONTRACTORS. Sealed bids will be received until noon, December 1, 1911, at the office of the undersigned.

NOTICE TO CONTRACTORS. Bids will be received until 4 o'clock on Saturday, December 2, 1911, at the office of the secretary of the Board of Regents.

NOTICE TO CONTRACTORS. Bids will be received until 4 o'clock on Saturday, December 2, 1911, at the office of the secretary of the Board of Regents.

THE HOME BUILDERS PAGE Practical Use of Cement Stucco

By Arthur C. Clausen.

HERE are four practical ways, on which no one holds any patent right, of obtaining a cement stucco finish, which when properly applied will be as permanent as any other form of masonry.



MR CLAUSEN'S BOOK. "The Art, Science and Sentiment of Stucco." Thirty chapters, 300 illustrations. It covers a wide range of subjects, including the planning of buildings, the design of exteriors, and the proper design of exteriors.

traction between brick and cement, for example, it is nothing compared to the difference in expansion between cement and metal, or cement and wood.

FRUIT land earning \$400 to \$1,000 per acre annually. I bought a tract of 300 acres in the Rio Grande valley.

ORCHARD LANDS IRREGULATED. No cash payment required. We need settlers-not their money.

OREGON ORCHARDS. Omaha representative wanted. "Paco" orchards in the beautiful Willamette valley.

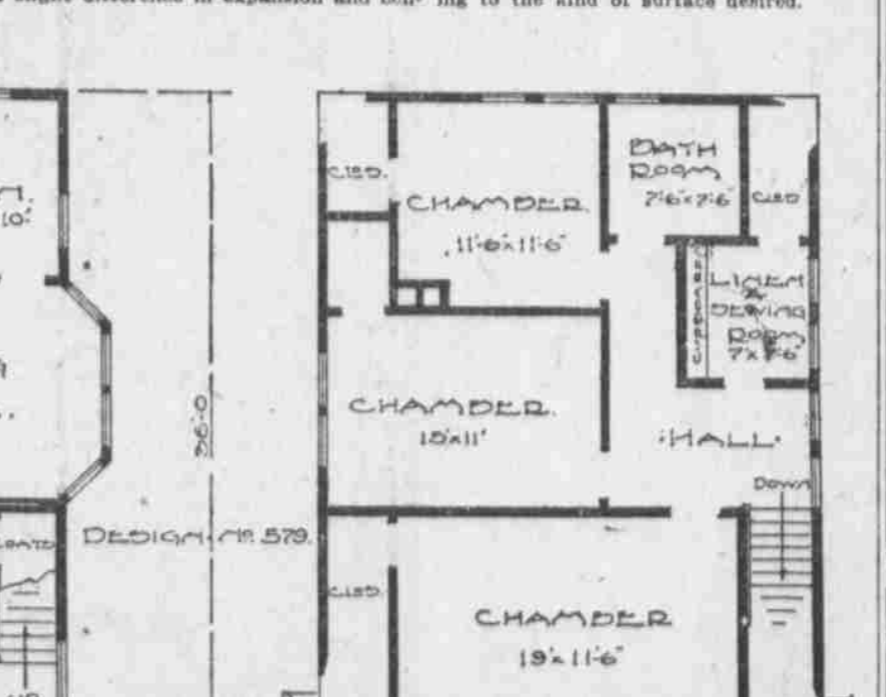
South Dakota. A FEW snags in Brule county, South Dakota, lands will pay railroad fare to buyers not satisfied.

Texas. EXCURSION to Monte Cristo (Texas), the beautiful, famous, Dec. 2. "The right place for winter homes or investment."

North Carolina. WANTED-Men to become independent farmers in eastern North Carolina.

Oregon. We are placing upon the market 100 farms (wheat, fruit and dairy), situated 4 miles from Albany, Ore.

that part of the cement mixture which comes directly in contact with it. By absorbing this water it removes one of the chemical properties of that part of the cement coming in contact with the wall, which is necessary for the proper setting of the cement.



PERMANENT ADDRESSES of Chief Attractions and Things of Interest

Seen at the Land Show. Booth of the big duck and the loud noise; where they have away five acres of orange land to the lucky guesser on the jar of nuts.

Arizona California California California Colorado Colorado Colorado Idaho Nebraska Nebraska Northwestern Oregon Oregon OREGON South Dakota Utah Wyoming Yellowstone Park

Where you saw the famous Sacramento Valley Exhibit. Inquire about the next excursion to this beautiful country, Nov. 15. Trowbridge & Bolater, 404 City National Bank Building.

Where you saw the beautiful alfalfa and stock raising exhibit. You remember! Large panoramas of cattle and sheep. If interested in alfalfa raising write to General Passenger Agent, Chicago and Northwestern R. R., Omaha, Nebraska, for pamphlet dealing fully with the subject.

Where you saw the attractive cyclorama of the City of Salem and the Willamette Valley created by Geo. L. Schreiber. The artist is identified with landscape art in Chicago and the country. He is also supervisor of drawing in the Salem grade and high schools.

Where you saw the two-headed calf, the large cabbage, the flat grove on sod, and the wheat grown without irrigation. Address Admore Commercial Club, Admore, South Dakota.

Guaranteed on Home Builders Shares. Phones D 3867; A 3807. 309 South Seventeenth Street, Omaha

Automobile Store Room. OMAHA VAN & STORAGE CO. ABSOLUTELY MAIN OFFICE-806 So. 16th St. Branches-309 So. 17th & 1120 No. 19th Sts. Telephone Douglas 4163 and Ind. A-1335

E. J. DAVIS HEAVY HAULING. Safe Hoisting a Specialty. THE OMAHA BEE is the home paper of Nebraska. 1818 Farnam Street. You reach people who buy when you advertise in The Bee. Tel. Doug. 353